

# 8: Collecting data (1)

You have practised putting data from other people into charts.

Now you are going to collect your own data to put into a chart.

TIME	TEMPERATURE
9am	4.5 degrees
10am	5 degrees
11am	5 degrees
12pm	6 degrees
1pm	6.5 degrees
2pm	4 degrees
3pm	3.5 degrees
4pm	3 degrees
5pm	2.5 degrees



DAY	TAKINGS
Monday	£135
Tuesday	£60
Wednesday	£45.50
Thursday	£100
Friday	£75.50

?	?	?
?	?	?
?	?	?
?	?	?
?	?	?

## Activity 8: Using your results



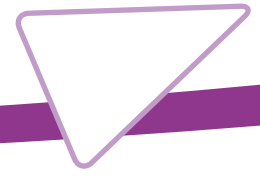
Can you collect and present the right data for the questions below?

1 Look back at your answers to Activity 1, Question 2.

a) Put your answers into the table below.

STOCK ORDER FORM	
ITEM	NUMBER OF STOCK NEEDED
Item A:	
Item B:	
Item C:	

b) Show your answers in a graph or chart.



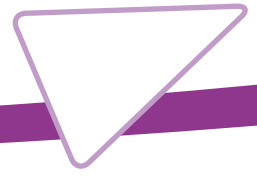
c) Which item do you need to order the most of?

d) Which item do you need to order the least of?

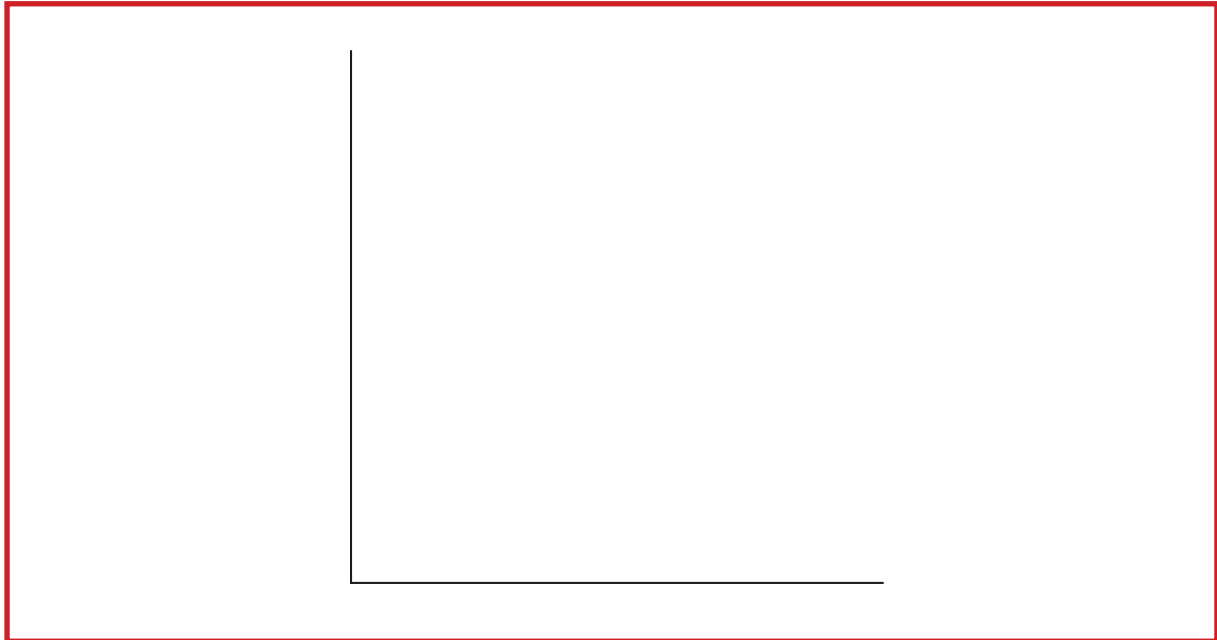
2 Ask your group to tell you the month in which they most like to take their holidays.

a) Record your findings in the table below.

Month	Number of people
January	
February	
March	
April	
May	
June	
July	
August	
September	
October	
November	
December	



b) Show your answers in a graph or chart.



c) Which month or months are the most popular?

d) Which month or months are the least popular?