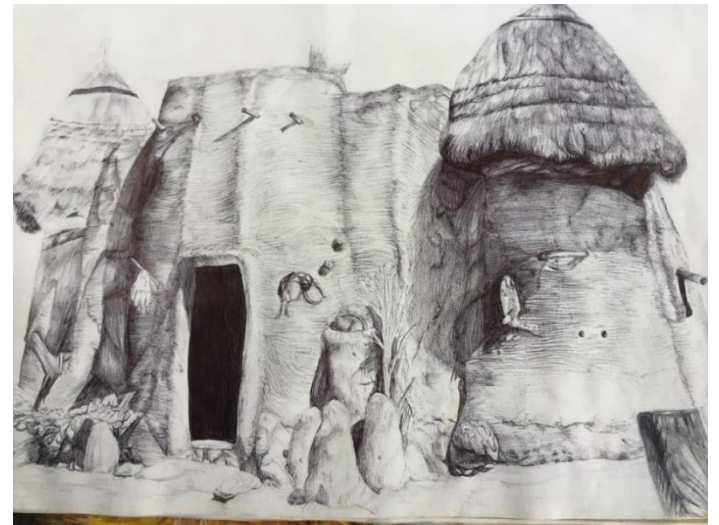
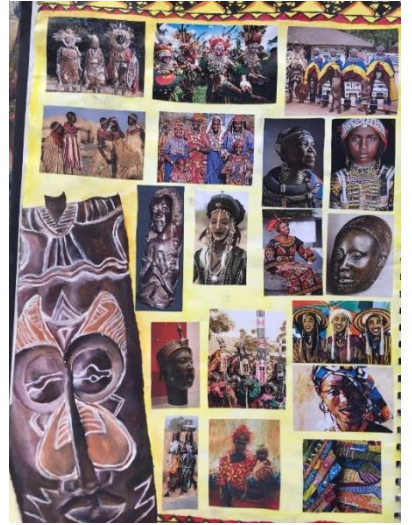


Component 1 Art, Craft and Design

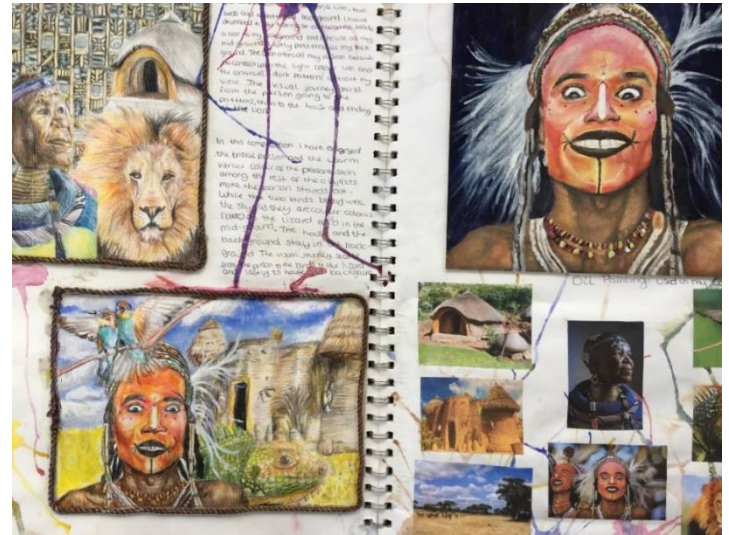
Standard mark = 64

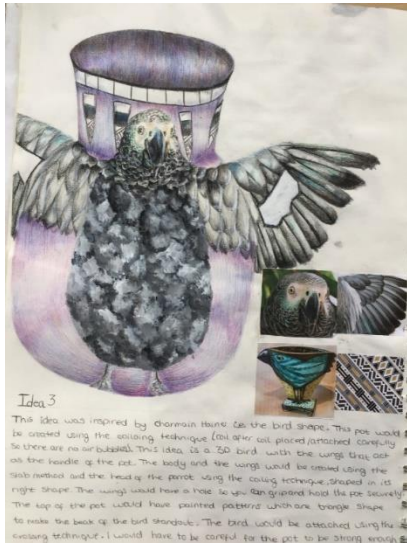
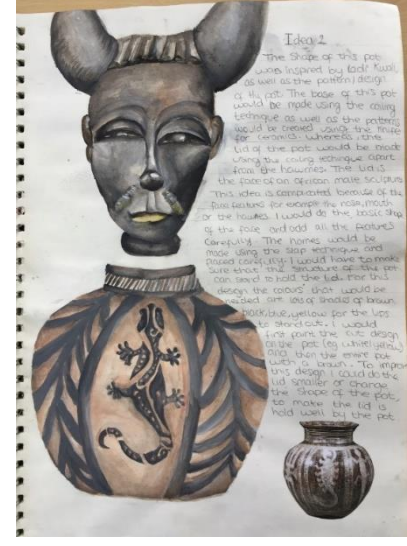
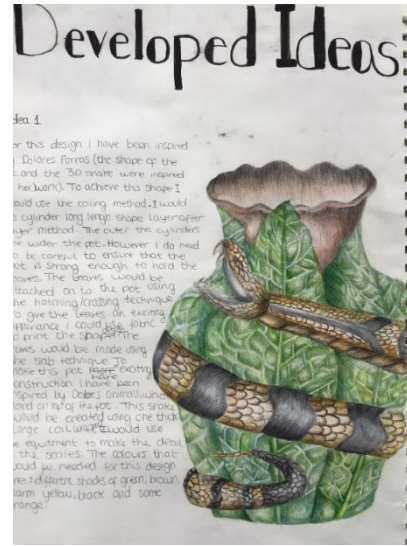
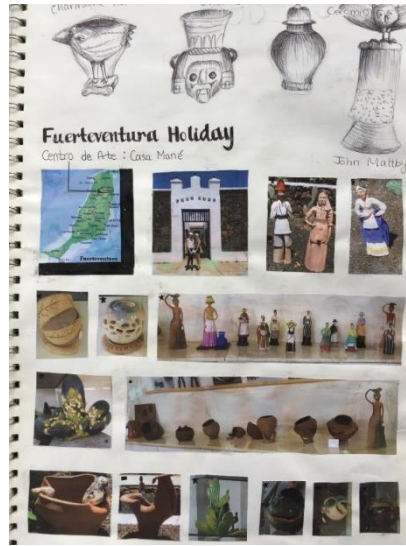
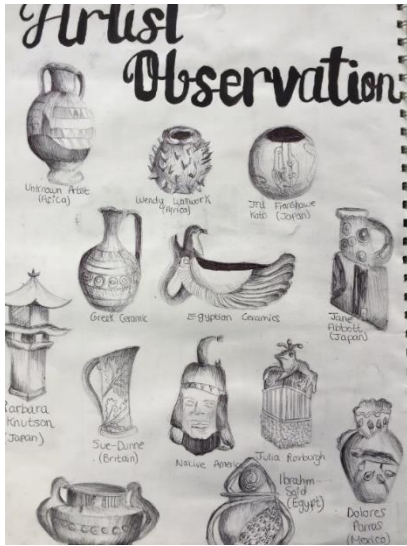
Keyword descriptors from the taxonomy:
Accomplished
Powerful

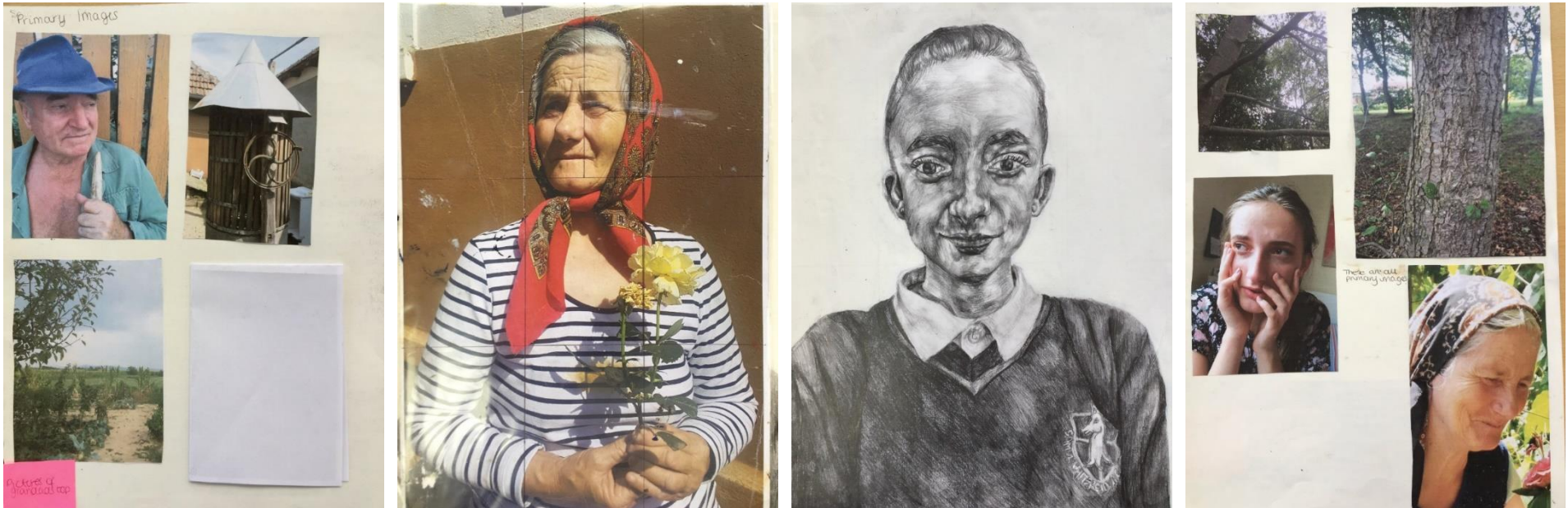
	A01	A02	A03	A04	Total
Mark	16	16	16	16	64
Level	6	6	6	6	6
	Just exceptional ability	Just exceptional ability	Just exceptional ability	Just exceptional ability	



Standard mark = 64







Standard mark = 64

Standard mark = 64

Keyword descriptors from the taxonomy:
Accomplished
Powerful

	AO1	AO2	AO3	AO4	Total
Mark	16	16	16	16	64
Level	6	6	6	6	6
	Just exceptional ability	Just exceptional ability	Just exceptional ability	Just exceptional ability	

Comments:

- There is evidence of an extensive range of painting techniques, drawing and ceramics.
- This is powerful intelligent work with strong development of ideas.
- The candidate shows evidence of adept exploration of ideas, selecting and experimenting with materials, techniques and processes.
- Annotation is purposeful and meaningful with strong analysis.
- This is a focused and sequential submission of work.
- The candidate shows strong evidence of drawing throughout, supported by their own photography.
- The candidate's knowledge, understanding and skill are in-depth, perceptive and accomplished throughout.
- An exceptional candidate in all assessment objectives.