



Pearson

BTEC qualifications

Awarding Results in 2021

Additional Guidance for:
Childcare Qualifications

Last updated 27 May 2021

Contents

1. Pearson BTEC Level 3 National Extended Diploma in Children’s Play, Learning and Development (Early Years Educator) (1080 GLH) 601/7572/2	3
2. Pearson BTEC Level 3 Diploma in Children’s Play, Learning and Development (Early Years Educator) (720 GLH) 601/7571/0	6
3. Pearson BTEC Level 3 National Extended Certificate in Children’s Play, Learning and Development (360 GLH) 601/7569/2 <i>and</i>	9
4. Pearson BTEC Level 3 National Foundation Diploma in Children’s Play, Learning and Development (540 GLH) 601/7570/9	9
5. Pearson BTEC Level 2 Technical Diploma in Children’s Play, Learning and Development (Early Years Practitioner) 603/0509/5	10
6. Pearson BTEC Level 3 National Award in Children's Care, Learning and Development 500/1814/0	11
7. Pearson BTEC Level 3 National Certificate in Children's Care, Learning and Development 500/1813/9.....	11
8. Pearson BTEC Level 3 National Diploma in Children's Care, Learning and Development 500/1812/7	11

BTEC Nationals Children's Play Learning and Development (2016 RQF)

For all learners certificating in Summer 2021, a Q-TAG must be submitted by the 18th June 2021.

1. Pearson BTEC Level 3 National Extended Diploma in Children's Play, Learning and Development (Early Years Educator) (1080 GLH) 601/7572/2

Qualification Teacher Assessed Grade (Q-TAG) mitigation applies only for learners who are due to be assessed between 1 August 2020 and 31 August 2021. This includes those that have topped up to larger qualifications this academic year.

To achieve the qualification, and claim certification on results day a learner will need to:

- Achieve a Pass grade or above in all mandatory internally assessed units (units 3, 5, 6, 7, 8,9, 10,11) - these units need to be assessed as usual and recorded in EOL.
- Achieve a Pass grade or above in all externally assessed units (units 1, 2).
- Unit 4 – Learners do not need to attempt this unit this year as the external assessment in Summer 2021 is cancelled, and it does not contribute to the Licence to Practice elements of the qualification. However, because it is important for progression to further study, the unit content should be taught for progression purposes but does not need to be assessed.
- Have a banked grade in EOL for unit 4 or have made an entry for summer 2021 but will not need to sit the assessment.
- Optional units – two units that are not assessed can be recorded in EOL, as reduced assessment units (Z grade) – this functionality will be available shortly (please refer to our [Administration Guidance](#) or further details).
- Other optional units that are not assessed cannot be recorded in EOL, but centres can use any incomplete assessment evidence to support the overall Q-TAG judgement.
- Centres will need to record a Q-TAG for all learners by the 18th of June (please see our [Awarding Results in 2021](#) guidance).

Additional Guidance for Childcare Qualifications

- The Q-TAG will reflect the grade the learner is performing at across the qualification.
- Before results are released, QA checks will take place to validate the external and internal assessment results, as well as the completion of work placement hours, so that the qualifications that are associated to a licence to practice can be awarded. Learners will need to complete the requirements of the PEP. Please see [PEP guidance](#) where some skills can be simulated. This allows for learners to focus only on the skills which cannot be simulated during their work placement.
- To meet the criteria of the Early Years Educator status, the learner must undertake placements in each of the age ranges listed below. This will ensure that the learner understands every aspect of children's further development:
 - from birth to one year, 11 months
 - from two years to four years, 11 months
 - from five years to seven years, 11 months.
- The learner must complete a minimum of 100 hours with each age group. Learners who are unable to complete the placement hours' requirements can either delay or take the fallback option (see below).
- Centres are required to confirm the work placement hours through the Head of Centre (HOC) Declaration form. Please communicate with your standards verifiers for the learners who have not been able to achieve the work placement hours.

Fallback option

If a learner is not able to meet some of the above requirements, they may be able to achieve the fallback qualification, which does not carry the Early Year Educator Licence to Practice but does carry the equivalent UCAS points. Centres will need to discuss with learners the implications of the fallback qualifications before requesting the learners to be transferred.

Centres need to submit a Q-TAG under all scenarios to reflect the learner's performance based on evidence available – please refer to the [Awarding Results in 2021](#) guidance.

The fallback option is available in the following scenarios:

Scenario 1 - Learner does not have enough placement hours (and/or will not achieve them in time) and wants to progress to university.

Scenario 2 – Learner records a N grade for either unit 1 or 2 and wants to certificate in August 2021.

Additional Guidance for Childcare Qualifications

- Centres will contact Pearson to make the necessary arrangement for Pearson to transfer the learners to the non- Licence to Practice qualification. (Pearson BTEC National Extended Diploma in Children’s Play, Learning and Development, 1080 GLH) 603/3572/5
- Centres with learners registered on the Extended Diploma will be contacted shortly to record their intentions for learners who are considering the fallback qualification.

Scenario 3 – Learner cannot meet the hours in time for summer certification or recorded a N or U for one or more of the external assessments (unit 1 and/or unit 2), but wants to progress to work with a Licence to Practice qualification.

- In this situation it is likely the learner will need to delay certification.
- Pearson will work with centres to support certification when the missing evidence is achieved – as this may be after 18 June, the results day of 10 August cannot be met.
- Reduced Assessment should be recorded in EOL using the Z grade, and learners should be entered for unit 4, although they do not need to sit it.
- A Q-TAG will need to be submitted once the work placement and/or unit 1 and/or unit 2 are achieved. This will be a manual process, and not through the portal which will close on 18 June.
- Ofqual has advised that learners who are eligible for a Q-TAG (learners due to be assessed between 1 August 2020 and 31 August 2021) can have the Q-TAG mitigation applied at a later date, once the work placement hours/licence-link elements are completed/achieved.

If the above still cannot be met, the learner could be transferred to the non-licence to practice qualification.

2. Pearson BTEC Level 3 Diploma in Children's Play, Learning and Development (Early Years Educator) (720 GLH) 601/7571/0

Qualification Teacher Assessed Grade (Q-TAG) mitigation applies only for learners who are due to be assessed between 1 August 2020 and 31 August 2021. This includes those that have topped up to larger qualifications this academic year.

To achieve the qualification, and claim certification on results day a learner will need to:

- Have a Q-TAG submitted by the 18th June 2021 for all learners certificating in Summer 2021.
- Achieve a Pass grade or above in all mandatory internally assessed units (units 3, 5, 6, 7, 8,9, 10,11) - these units need to be assessed as usual and recorded in EOL – all units of this qualification are mandatory.
- Achieve a Pass grade or above in all externally assessed units (units 1, 2).
- Complete the requirements of the PEP. Please see [PEP guidance](#) where some skills can be simulated. This allows for learners to focus only on the skills which cannot be simulated during their work placement.
- To meet the criteria of the Early Years Educator status, the learner must undertake placements in each of the age ranges listed below. This will ensure that the learner understands every aspect of children's further development:
 - from birth to one year, 11 months
 - from two years to four years, 11 months
 - from five years to seven years, 11 months.
- The learner must complete a minimum of 100 hours with each age group. Learners who are unable to complete the placement hours requirements can either delay or take the fallback option (see below).
- Centres are required to confirm the work placement hours through the Head of Centre (HOC) Declaration form. Please communicate with your standards verifiers for the learners who have not been able to achieve the work placement hours.

Fallback Option

If a learner is not able to meet some of the above requirements, they may be able to achieve the fallback qualification, which does not carry a Licence to Practice but does carry UCAS points.

Same scenarios as 1, 2, 3 above for the Pearson BTEC Level 3 National Extended Diploma in Children's Play, Learning and Development (Early Years Educator) (1080 GLH, 601/7572/2).

Centres will not be able to register or transfer learners to this qualification directly.

Centres will need to discuss the fallback option with the learner and tell your standards verifier which learners would like to take the fallback option.

Mid-flight learners on Licence to Practice qualifications, certificating in 2022

- Flag 'reduced assessment' for optional units in EOL, by the 31 August 2021 for Extended Diploma.
- Continue teaching and assessing all other units.
- Continue to complete placement hours as appropriate.
- Learners will need to record at least a Pass grade for unit 1 and unit 2 external assessments and units 3, 5, 6, 7, 8, 9, 10 and 11 internal mandatory units.
- For Extended Diploma, learners will need to complete unit 4 – before certification in 2022.
- We do not know yet, what the work placement requirements will be for certification learners in 2022 as the VCRF only runs to 31 August 2021, when OFQUAL will review and put new arrangements in place.
- Please refer to the [Awarding Results in 2021](#) guidance for further information for mid-flight learners.

3. Pearson BTEC Level 3 National Extended Certificate in Children's Play, Learning and Development (360 GLH) 601/7569/2

and

4. Pearson BTEC Level 3 National Foundation Diploma in Children's Play, Learning and Development (540 GLH) 601/7570/9

Learners certificating on a 360 GLH or 540 GLH qualification and who intend to top up to a Licence to Practice, to certificate in 2022.

Qualification Teacher Assessed Grade (Q-TAG) mitigation applies and must be submitted by June 2021.

To achieve the qualification, and claim certification on results day a learner will need to:

- Record a P grade for all completed mandatory units in EOL in 2021, before certificating on the larger size qualification in 2022.
- A Q-TAG can be submitted for the Extended Certificate and Foundation Diploma qualifications, and all completed units recorded in EOL for 2021.
- The learner could for example claim a Q-TAG through sources of evidence for 2020/21, but when they top up, they will need to pass any external assessments or partially assessed internal units to claim the Licence to Practice qualification in the future, in 2022.
- Work placement has been relaxed for learners certificating in summer 2021. However, when the learner tops up, they will need to meet the work placement requirements for the licence to practice qualification. We do not know yet, what the work placement requirements for certification learners in 2022 will be. The VCRF only runs to 31 August 2021, when OFQUAL will review and put new arrangements into place.

5. Pearson BTEC Level 2 Technical Diploma in Children's Play, Learning and Development (Early Years Practitioner) 603/0509/5

Qualification Teacher Assessed Grade (Q-TAG) mitigation applies and must be submitted by June 2021.

To achieve the qualification, and claim certification on results day a learner will need to:

- Complete 100% mandatory content, that is based on practical skills. Please refer to Placement Experience Portfolio ([PEP guidance](#)) to support completing the skills.
- Be entered for and record a P grade for the external assessed unit 1 and unit 2.
- On demand external assessments are available as normal.
- Placement hours are relaxed but learners must achieve skills required within units 3-7. These can be assessed holistically.

Re-sit opportunity for learners on CPLD Nationals and Technical

Will a further re-sit opportunity be available for learners who were unable to sit January/March exam?

The next exam series is available in June 2021. Check our [exam timetable](#) website for further details.

For Level 2 Technical, the unit 1 is available on demand and can be taken when the learner is ready.

Special considerations

Where learners, who have achieved all the skills, but not the minimum required hours for placement for the Licence to Practice qualifications, centres may apply for special considerations via EOL. For example, if a learner has completed all the skills for the 0-1 years 11 months but only completes 80 hours then a special consideration might be applicable.

Additional Guidance for Childcare Qualifications

Fallback options for Pearson BTEC Level 2 Technical Diploma in Children's Play, Learning and Development for learners certificating in August 2021 and August 2022

There is a new qualification pathway available for learners:

- ✓ Pearson BTEC Level 2 Technical Diploma in Children's Play, Learning and Development (knowledge only)

This pathway is available for learners registered with the intention of obtaining Early Years Practitioner status but who do not satisfy placement hours and/or external assessment requirements in full, but otherwise meet the requirements for a BTEC Technical.

This pathway will only apply to learners who had:

1. registered in 2019/2020 and are on 2-year programme (certificating 2021) or
2. registered in 2020/2021 on one-year programme (certificating 2021), or
3. delaying for other reasons and unable to certificate in August 2021 or
4. registered in 2020/2021 on a 2-year programme and will be certificating in August 2022 who have met full conditions of Technical, except work placement.

Assessment requirements for anyone certificating in 2021 will be under current VCRF (ending August 2021) and will apply to scenarios 1-3 above. Learners certificating in August 2022 will have to meet all conditions of any new VCRF applicable next year.

The alternative pathway does not confer Early Years Practitioner status in early years settings and therefore learners cannot be counted in ratios within early years settings.

Centre needs to submit a Q-TAG under all circumstances to reflect the learner's performance based on evidence available – please refer to the [Awarding Results in 2021 guidance](#).

To achieve the alternative pathway qualification if certificating in **August 2021**, learners must:

- Complete and report an outcome for all units at a pass or above, within a valid combination through Q-TAG
- Achieve the minimum GLH for the required units (External)
NB: Unclassified (U) is a permitted unit outcome for the External units
- The work placement hours are relaxed/non mandated,
- Skills can be demonstrated holistically through alternative methods of assessment as suggested in the adapted [Placement Experience Assessment Portfolio of Evidence](#) for Knowledge only pathway and [Placement Experience Assessment Portfolio of Evidence guidance](#).

Additional Guidance for Childcare Qualifications

Centres will not be able to register or transfer learners to this qualification directly.

Centres will need to discuss the fallback option with the learner and tell your standards verifier which learners would like to take the fallback option.

To achieve the alternative pathway qualification if certificating in **August 2022**, learners who have a delay in achievement or are on a two-year programme must:

- Complete and report an outcome for all units at a pass or above within a valid combination.
- Achieve the minimum number of points at a grade threshold.
- Achieve the minimum GLH for the required units (External)
NB: Unclassified (U) is a permitted unit outcome for the External units
- The work placement hours are relaxed/non mandated,
- Skills can be demonstrated holistically through alternative methods of assessment as suggested in the adapted [Placement Experience Assessment Portfolio of Evidence](#) for Knowledge only pathway and [Placement Experience Assessment Portfolio of Evidence guidance](#).

Centres will not be able to register or transfer learners to this qualification directly.

Centres will need to discuss the fallback option with the learner before **March 2022** and tell us which learners would like to take the fallback option.

6. Pearson BTEC Level 3 National Award in Children's Care, Learning and Development 500/1814/0

- Placement hours relaxed.
- Achieve a Pass grade or above in all internally assessed units (units 1, 2, 3, and 5) - these units need to be assessed as usual and recorded in EOL – all units of this qualification are mandatory.
- Unit 38 can be reduced for assessment. This unit must be taught but not assessed and flagged on EOL as Z to indicate where the reduced assessment mitigation has been used. See the [Administration Guidance](#) for support.
- Longitudinal study can be simulated using YouTube clips/Links in the PEP/Siren Films etc.

7. Pearson BTEC Level 3 National Certificate in Children's Care, Learning and Development 500/1813/9 *and*

8. Pearson BTEC Level 3 National Diploma in Children's Care, Learning and Development 500/1812/7

Qualification Teacher Assessed Grade (Q-TAG) mitigation applies and must be submitted by 18th June 2021. To achieve the qualification, and claim certification on results day a learner will need to have:

- Reduced assessment - total GLH that can be reduced is up to a maximum of 120, but only 60 GLH of these should be from the NISCC recommended list of units.
- The Longitudinal study is a core element of the Licence to Practice for this qualification so would need to be undertaken in real time, and more appropriately on placement and/or with family member / friend.
- 70% of placement hours are to be achieved, but if 70% cannot be achieved special considerations can be applied, provided skills are all met using triangulation of evidence.

Additional Guidance for Childcare Qualifications

- Centres are required to confirm the placement hours achieved for individual learners by completing and submitting the work placement declaration form. Further guidance on completing the work placement declaration form will be published shortly.
- Observations, activities and daily care routine write ups can be reduced to three age groups: 0-3 years, 3-5 years, 5-8 years instead of 0-1 year 1-3 years 3-5 years 5-8 years. Therefore, observations, activities and care routine write ups can also be reduced to 15 observations, 15 activities and 12 care routine writeups.
- Triangulation of evidence for skills could include:
 - ✓ Significant *Expert Witness Testimony* (EWT) from the employer which details that the learner's competence has been consistently displayed over time, across all units within the qualification and is sufficient to meet the specified assessment criteria. Please note that a single EWT will not be accepted as enough evidence.
 - ✓ Substantial and holistic learner *reflection across all units* within the qualification, clearly evidencing the integration of knowledge into practice. Reflections must be linked solely to the learner's work experience/placement; reflection based on simulation, case studies or scenario-based reflection will not be accepted.
 - ✓ Significant professional discussions between the learner, assessor and Expert Witness. These will occur over time and provide opportunity for the:
 - Learner to expand on submitted reflections for the purposes of VARCS.
 - The EWT to enrich and validate the learner's reflections.
 - The assessor to gather evidence relating to outstanding areas of competency, particularly in relation to the integration of knowledge into practice, and/or aspects of practice that occur infrequently.

Fallback options for Pearson BTEC Level 3 National Certificate in Children's Care, Learning and Development for learners certificating in August 2021.

There are two new qualification pathways available:

- ✓ BTEC National Certificate in Children's Care, Learning and Development Studies (non-licence) (720 GLH)
- ✓ BTEC National Diploma in Children's Care, Learning and Development Studies (non-licence) (1080 GLH)

Additional Guidance for Childcare Qualifications

Centre needs to submit a Q-TAG under all circumstances to reflect the learner's performance based on evidence available – please refer to the section 7 of the [Awarding Results in 2021](#) guidance.

- For both pathways the 800 work placement hours are relaxed/non mandated,
- Skills can be demonstrated holistically through alternative methods of assessment as suggested in the [Professional Practice Log for non-licence pathways](#).

These two alternative qualification pathways are available for learners who had registered with the intention of obtaining practitioner status, but who do not satisfy those requirements in full and otherwise meet the requirements for a BTEC National, yet who still want to progress to HE.

They do not confer licence to practice status in early years settings, and therefore learners cannot be counted in adult: child ratios.

Centres will not be able to register or transfer learners to this qualification directly.

Centres will need to discuss the fallback option with the learner, including the implications of non-practitioner status and tell your standards verifiers which learners would like to take the fallback option.

Additional Guidance for Childcare Qualifications

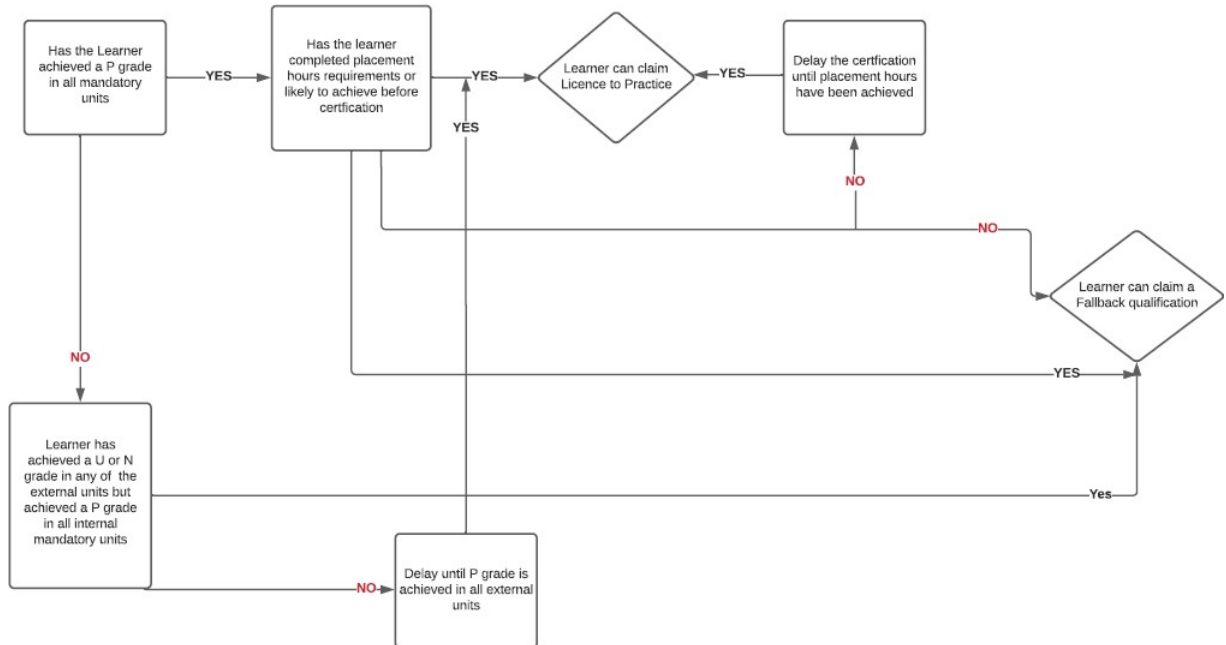
Summary and flowchart for Early Years Educator

Overall evidence grid to award Q-TAGs and the candidate to achieve the Licence to Practice continuing employment.

EVIDENCE	Example 1	Example 2	Example 3	Example 4
External Assessments Unit 1 and Unit 2	√ (sat and achieved min of P)	√ (sat and achieved min of P)	√ (sat and achieved min of P)	X (sat and achieved N or U)
Internal Assessments	√ (achieve min P on units linked to L2P)	√ (achieve min P on units linked to L2P)	X	√ (achieve min P on units linked to L2P)
Work placements	√ (completed and work placement centre declaration has been submitted)	X (not completed fully)	√ (completed and work placement centre declaration has been submitted)	√ (completed and work placement centre declaration has been submitted)
Will I achieve the Early Years Educator qualification?	YES	NO DELAY OR FALLBACK	NO DELAY OR FALLBACK	NO DELAY

Additional Guidance for Childcare Qualifications

Process Flow chart for qualification decisions- BTEC Level 3 Early Years



PS: External units only means unit 1 and 2

One of the key decision factors for the fallback qualifications is for learner wanting or needing this option for their progression to further or higher education and not requiring a licence to practice