

A solid blue triangle pointing to the right.

Recognising Pearson Test of English General

Pearson English International Certificate

Pearson Test of English General

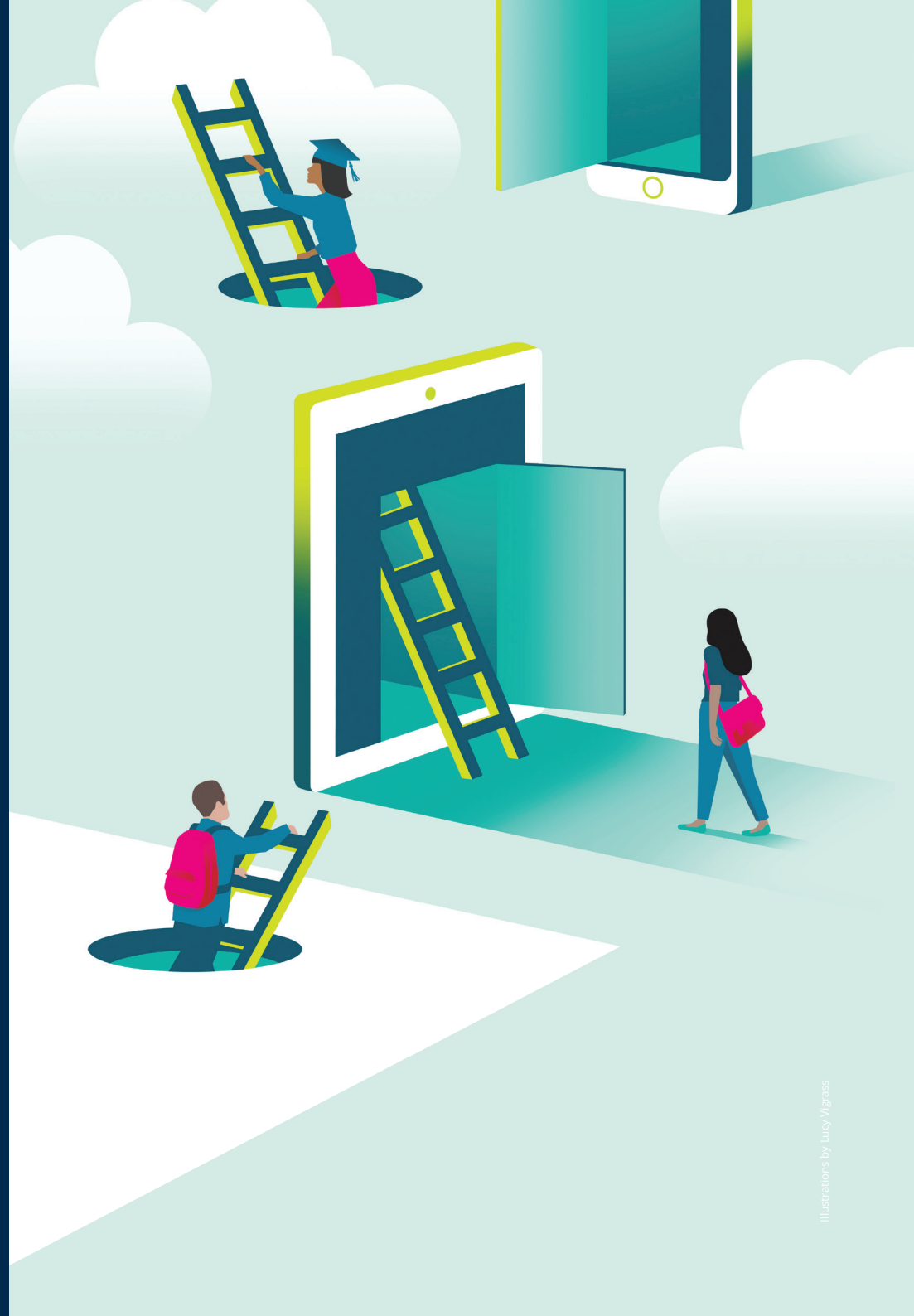
Pearson English International Certificate

Pearson is the world's leading learning services company, delivering over 130 million tests each year.

As part of Pearson, Edexcel is the United Kingdom's largest provider of academic and vocational qualifications and offers PTE General/Pearson English International Certificate – helping learners demonstrate their English proficiency to schools, universities and governments around the world.

The test, originally developed by the University of London in 1985, is created, marked and awarded in England, and accredited by Ofqual (The Office of Qualifications and Examinations Regulation), the national regulator for formal qualifications.

pearson.com/ptegeneral




Why recognise this qualification?

We understand it is a significant decision for universities to accept a test as proof of English proficiency, so we want to ensure you have all the information you need to make the choice with confidence.

- ✓ PTE General/Pearson English International Certificate is growing rapidly in popularity around the world. Currently, learners in over 50 countries hold this accurate and reliable qualification.
- ✓ In many of these countries, the test is already recognised by Ministries of Education and universities. We are committed to expanding this even further to ensure that holders of the qualification are not required to gain another certificate to apply to their chosen university or employer.
- ✓ Pearson Edexcel's world-class assessment methodology means you can be certain that learners presenting their qualifications will have a level of English matching your requirements – in practice, as well as on paper.
- ✓ As a university that recognises this Pearson qualification, you can benefit from a listing on the Pearson website. This offers the opportunity to raise awareness of your institution with hundreds of thousands of learners, nationally and around the globe.
- ✓ The qualification is comparable to Cambridge and Oxford certificates, but with additional reliability, with 100% UK marking and the validity of Ofqual regulation.

Comparison with other awarding bodies

	Internationally recognised	Ofqual regulated	100% UK marked*
 Pearson PTE GENERAL	✓	✓	✓
 Cambridge Assessment English	✓	✓	
 OXFORD TEST OF ENGLISH	✓		

* This means both the written and spoken sections of the test are marked in the UK



What does the test assess?



The test allows learners to demonstrate their English language ability at six different levels, each aligned to a level of the Common European Framework of Reference (A1 to C2).

It is designed to reflect language that learners can expect to encounter in English-speaking environments and has a focus on communicative ability, letting test takers show how well they can use English in practice.

The formal rules of English are tested in the context of question types that mirror how the language is used in real life – from reading comprehension exercises based on newspaper and magazine articles to extended writing items asking test takers to express an opinion and advance an argument.

Each level accurately measures Listening, Reading, Speaking and Writing.

Regulation and delivery



PTE General/Pearson English International Certificate is regulated by Ofqual, the Office of Qualifications and Examinations Regulation for England, an independent body reporting directly to Parliament.

<https://www.gov.uk/government/organisations/ofqual>

Test certificates reflect the Ofqual qualification title, the commercial name and the CEFR level of each test.

The test delivery process follows that of the UK's national school qualifications – GCSEs and A-Levels. It is only delivered at approved Pearson Edexcel test centres, typically schools and universities.

To become a test centre, institutions must go through a rigorous approval process managed by a team based in London. Approval is only granted where schools can demonstrate they have the capacity to deliver the tests correctly and securely.

Prospective centres are typically inspected by Pearson staff, undergo an independent Due Diligence review, and sign formal terms and conditions relating to their conduct. Approval is contingent on the following of best practice and can be withdrawn at any time.

Ofqual title	Commercial name	CEFR level
Pearson Edexcel Certificate in ESOL International Entry 1 (A1)	PTE General Level A1	A1
Pearson Edexcel Certificate in ESOL International Entry 2 (A2)	PTE General Level A2	A2
Pearson Edexcel Certificate in ESOL International Entry 3 (B1)	PTE General Level B1	B1
Pearson Edexcel Certificate in ESOL International Level 1 (B2)	PTE General Level B2	B2
Pearson Edexcel Certificate in ESOL International Level 2 (C1)	PTE General Level C1	C1
Pearson Edexcel Certificate in ESOL International Level 3 (C2)	PTE General Level C2	C2

Test structure and marking

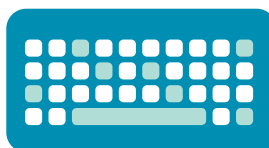
The test assesses Listening, Reading, Speaking and Writing skills, and consists of nine sections, including multiple-choice, short answer and extended writing items.

The test is divided into two sessions:

Session one: Test of Speaking, in the form of an oral interview

Session two: Test of Listening, Reading and Writing

Test level	Session one – time	Session two – time
Foundation (A1)	5 minutes	1 hour and 15 minutes
Level 1 (A2)	5 minutes	1 hour and 35 minutes
Level 2 (B1)	7 minutes	1 hour and 35 minutes
Level 3 (B2)	7 minutes	2 hours
Level 4 (C1)	8 minutes	2 hours and 30 minutes
Level 5 (C2)	8 minutes	2 hours and 55 minutes



Completed test scripts are returned to the UK for processing at Pearson's high-tech site in Hellaby, Yorkshire. Each year, millions of papers are scanned, digitised at Hellaby and sent to examiners around the country for on-screen marking.

This system not only reduces the risk of papers going missing, but ensures the highest standard of marking, which can be easily and rigorously regulated. Senior Examiners carefully scrutinise the work of markers in real time, flagging any issues or reassigning the work if markers do not meet the required standard.

Learners' work is fully anonymised, so markers cannot identify whose work they are marking or where in the world the candidate is from.

The Speaking section of the test is conducted as an interview and typically returned to the UK in a digital format (MP3). These files are similarly sent to markers around the UK electronically via a Secure File Transfer system. Just as with the other sections, samples of the Speaking section are checked by Senior Examiners to ensure consistency and accuracy.

Centralising marking in the UK also means that all candidates around the world are judged against the same criteria.

The background is a dark blue field filled with a pattern of green and blue curved lines and small white squares, resembling confetti. A large white circle is positioned on the right side, containing text. A smaller blue circle is on the left, containing the number '175' and the words 'years of excellence'.

175 years of excellence

Established in 1844, Pearson is the world's largest learning company – and throughout our rich and varied history, we have grown a deep connection with the world of English language.

The historic brand now known as Pearson Longman published Samuel Johnson's famous *Dictionary of the English Language* in 1755. We purchased Lindley Murray's important *English Grammar* in 1799, and in the 1800s published McCulloch's *Commercial Dictionary*, alongside great English language classics such as *Robinson Crusoe*.

We've built world-famous newspapers and publications, and been one of the largest ever book publishers globally.

Our roots in education date back to 1968, but it was in 2015 that we decided to focus our entire operation on creating a more connected and prosperous society through learning.

Our education and examination body, Edexcel, incorporates many prestigious examination boards, including the University of London Examinations and Assessment Council (ULEAC), offering internationally recognised qualifications, including PTE General/ Pearson English International Certificate.

The delivery of world-class English language assessment is – and will continue to be – a vital part of Pearson's vision.

Paper-based and computer-based testing



From late 2020, the test will be offered in two formats: the traditional paper-based test with a face-to-face speaking interview, and a new, entirely computer-based version using Pearson's cutting-edge artificial intelligence scoring technology.

The computer-based version will offer benefits such as:

- quick turnaround time on scoring
- flexible, on-demand delivery throughout the year
- advanced student analytics and data to inform remediation and progression
- artificial intelligence-marked speaking to reduce implicit human bias



Awarding body

How to recognise this qualification

To start accepting PTE General/Pearson English International Certificate at your institution, simply complete the online form found here:

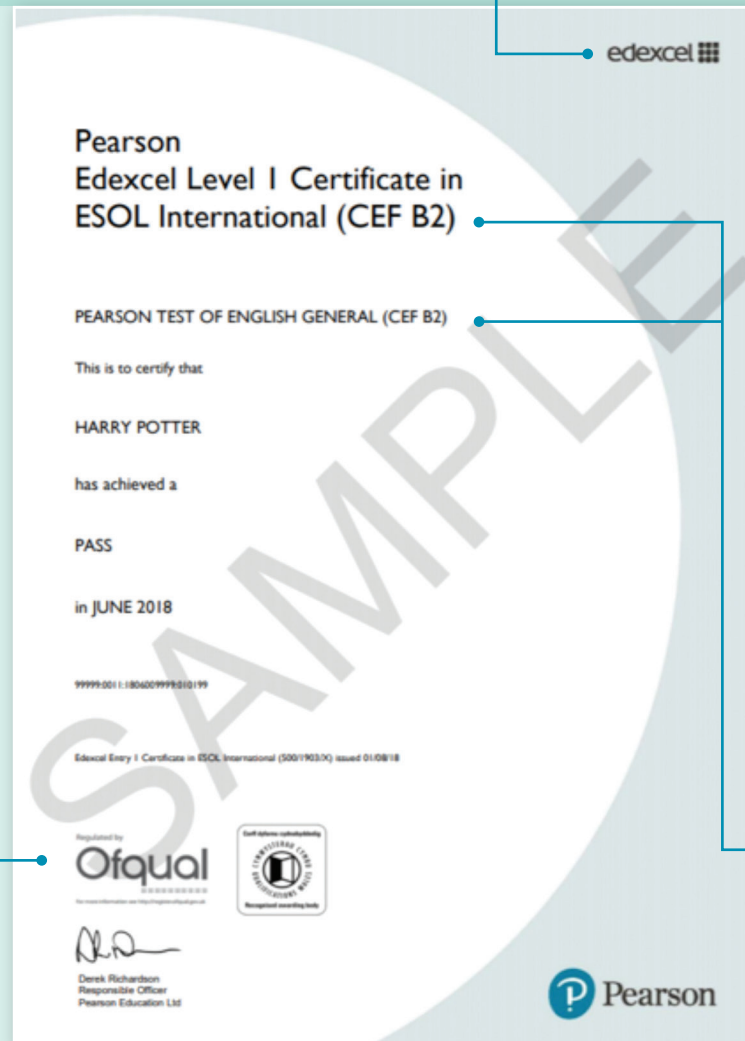
https://pearson.formstack.com/forms/ptegeneral_recognition_registration



To see a list of universities in your country who already recognise this qualification, please go to pearson.com/ptegeneral and click on 'Where is it accepted'.

CEFR level, which reflects the student's overall English language ability and is based on performance throughout the test

England's organisation for overseeing qualifications



What educators are saying about PTE General/Pearson English International Certificate

“ It certifies, more precisely than any other certification on the market, the real English level of the student and their ability to use the language in the real world.


The format doesn't demand so much exclusive preparation in exam strategies as other qualifications, which makes the organisation in the schools easier because students don't dedicate the whole morning to an exam and can continue with their daily routine. This way we can dedicate more time to teaching students English, not only preparing for an exam.”

> Programme Administrator delivering PTE General/Pearson English International Certificate, Instituto de Escuela Secundaria (Spain)

*“ It reflects the main objective of our courses: the development of communicative skills. It concentrates on real communication and contextualised interaction. Moreover, **PTE General's** vision of English as a global language caters for non-native students' needs. Its fees are also realistic and take into consideration students from low-income families.”*


> Analía, Exams Coordinator for the Language Extension Programs, Universidad Nacional de Catamarca (Argentina)






“English is a precious tool for our students to be ready for global opportunities, and after an extensive analysis and report conducted by our English teaching staff, we consider that Pearson’s certification provides accurate results in terms of the candidate’s ability to use language.”

> Dr Leticia Bourges, Secretary of Institutional and International Affairs, Universidad del Centro Educativo Latinoamericano (Argentina)



“It offers a pertinent model - both educational and formative - for the youth of the 21st century.”

> Ing. Paulino Bernot Silis, Dean at PrepaTec (Mexico)



“The certification that Pearson offers has great value for students and... gives credibility to the academic process. We are fulfilling our promise that students can effectively communicate in English when they graduate.”

> Lic. Maria Jose Pineda Garin, Academic Director at PrepaTec (Mexico)

Learn more about



pearson.com/ptegeneral