

Here are four ways our offer will support learners to excel in

# Construction

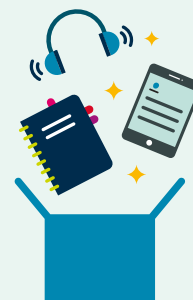
## 1. Expert-led Guidance

- ✓ Guidance for learners, employers and training providers, including the information that is needed to support preparation for assessment.
- ✓ Created in consultation and collaboration with external stakeholders.
- ✓ Pearson have partnered with George Clarke and MOBIE developing qualifications to encourage and inspire the next generation of designers, technicians and architects.



## 2. Flexible Delivery Options

- ✓ Our experts will work with you to tailor a course to support individual learning plans in the work environment.
- ✓ We offer flexible assessment and testing methods, including the option to choose preferred assessment dates and (depending on the level) these do not need to be in a classroom all the time.
- ✓ The Level 1 Health & Safety is now available as a workbook, so learners are still able to gain their CSCS cards required to work on site. Allowing flexible and easy solutions for delivery and quick progression during restrictive times.



## 3. Meeting the needs of the sector

- ✓ Standards that support and reflect the needs of the construction landscape and its sectors like health and safety, architecture, surveying and design to name a few.
- ✓ Updated BTEC and NVQ qualifications that meet the CSCS Card scheme and industry requirements, from labourer, to skilled operative, supervisor and manager card.



## 4. Support

- ✓ We have developed an offer that give learners industry relevant qualifications and transferable skills, with a focus on personal and professional development in construction.
- ✓ Thorough hands-on support from your Pearson account manager and team members, giving you clear step-by-step guidance for every stage of the process.
- ✓ We work in partnership with employers to create and deliver apprenticeships that will give your apprentices the best opportunity to achieve their full potential and to progress further.



Contact us for more information on how Pearson's construction offer can support you:

### Training providers and employers

- ▶ email: [wblcentresupport@pearson.com](mailto:wblcentresupport@pearson.com)

### FE Colleges

- ▶ email: [fecentresupport@pearson.com](mailto:fecentresupport@pearson.com)