

Write your name here

| | |
|---------|-------------|
| Surname | Other names |
|---------|-------------|

Centre Number

| | | | | | |
|--|--|--|--|--|--|
| | | | | | |
|--|--|--|--|--|--|

Learner Registration Number

| | | | | | |
|--|--|--|--|--|--|
| | | | | | |
|--|--|--|--|--|--|

Pearson Entry Level in Essential Digital Skills

**Specimen Assessment Material for first teaching
September 2020**

Time: 20 minutes

Paper Reference

XXXX/01

You do not need any other materials.

Total Marks: **6**

Instructions

- Use pen for your answers.
- **Fill in the boxes** at the top of this page with your name, centre number and candidate number.
- Answer **all** questions.
- Some questions must be answered with a tick in a box. If you change your mind about an answer, put a line through the box and then mark your new answer with a tick.
- Answer the questions in the spaces provided – *there may be more space than you need.*

Information

- The total mark for this paper is 7.
- The marks for each question are shown in brackets – *use this as a guide to how much time to spend on each question.*

Advice

- Read each question carefully before you start to answer it.
- Try to answer every question.
- Check your answers if you have time at the end.

1. Keyboard, mouse and monitor are examples of:

Tick **one** box.

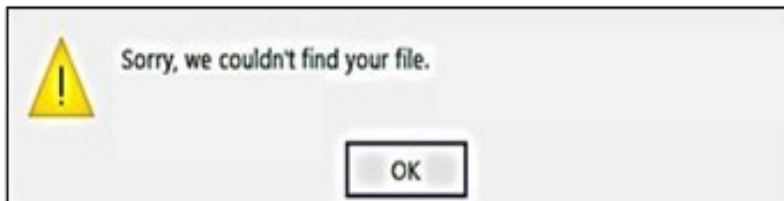
- A Operating systems
- B Hardware
- C Word processing

(1)

(Total for Question 1 = 1 mark)

2. You try to open a file and this message appears.

Identify the reason **for this message appearing**.



Tick **one** box.

- A File too large
- B File sent
- C File deleted

(1)

(Total for Question 2 = 1 mark)

3. Your username is stored on a website you use regularly to buy cinema tickets.

Give **one other** example where your username may be stored when using other online accounts.

(1)

For banking online.....
.....

(Total for Question 3 = 1 mark)

4. You decide to buy a new printer online.

You use your debit card to pay for the printer.

Give **one other** way you could pay for the printer online.

(1)

I could use Paypal.....
.....

(Total for Question 4 = 1 mark)

5. You use the public WiFi network at the local café. Shoulder surfing is a potential security risk of using the cafe public WiFi network.

Give **one other** security risk of using this public WiFi network.

(1)

It could lead to you easily getting hacked as its open

.....

(Total for Question 5 = 1 mark)

6. Jeba suffers from eye strain when she uses her computer.

Give **one** way Jeba can reduce the risk of eye strain.

(1)

She could take breaks from the screen

.....

(Total for Question 6 = 1 mark)

TOTAL FOR PAPER = 6 MARKS