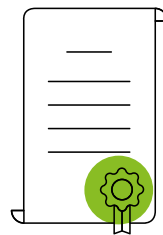


BTEC assessment and results 2024/25 - schools & colleges guide

In this guide you will find all the information you need on assessment if you are a BTEC educator.



Principles and
key dates



How BTEC
qualifications
are awarded

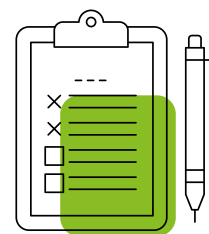


Appeals
and further
support



Grades
and grade
boundaries





The principles around awarding results in 2025

Ofqual has set out their **plans for awarding qualifications in 2025** and their plans to continue with normal arrangements this summer, having returned to normal grading in 2023 for A levels, AS levels and GCSEs, as well as for vocational qualifications.

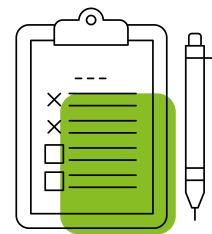
Our guiding principle and approach to awarding BTEC qualification results in 2025 is to maintain the performance standards from summer 2024.

Key dates

This year, the key dates relating to the issuing of results are as follows:

5 July	Claiming and internal assessment grade submission deadline You must have made a full award claim before 5 July for all learners who are expecting to receive a result in August. You must also submit all internal assessment grades by this deadline. If you haven't, we will be unable to guarantee your learners will receive a result in August.
6 August	Release of Level 3 results to centres under embargo
15 August	Release of Level 2 results to centres under embargo
14 August	Level 3 results issued to students
21 August	Level 2 results issued to students

For further information please see our [key dates timeline](#).



Term-time checkpoint deadlines

This year we have worked in partnership with schools and colleges to meet three term-time checkpoint deadlines for BTEC Firsts and Nationals, BTEC Technicals and BTEC Tech Awards.

Checkpoint 1 | 31 January cohort confirmation

The latest date by which a cohort confirmation is signed by schools and colleges, declaring which students should expect to receive a result by 15 August.

Checkpoint 2 | 2 May cohort reconfirmation

The latest date by which a final cohort confirmation is signed by schools and colleges following any changes, declaring which students should expect to review a result by 15 August.

Checkpoint 3 | 5 July BTEC claiming deadline

The latest date by which schools and colleges should submit a full award claim and internally assessed grades to allow Pearson to issue results in August.

[Read more about Term-time checkpoint deadlines](#)

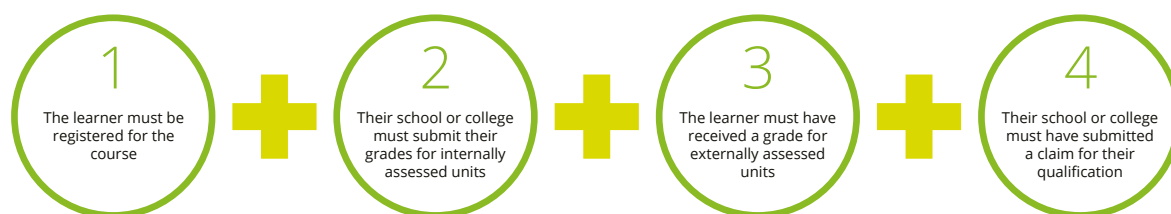


How BTEC qualifications grades are awarded



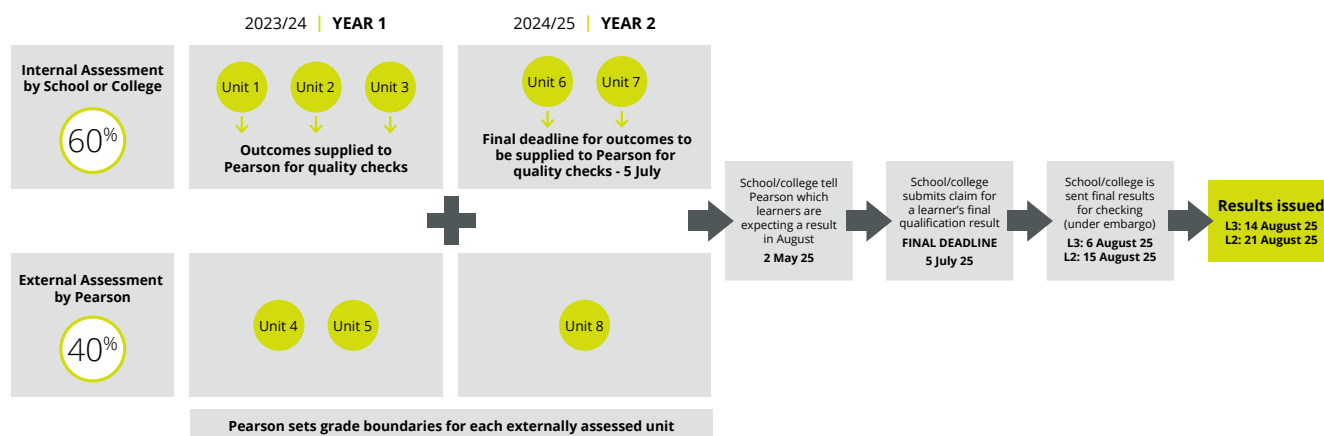
For Level 3 BTEC Nationals, for example, most qualifications are made up of around 60% of internally assessed units which are assessed by you and quality assured by Pearson. External assessments (usually around 40% of the qualification) are set, marked and awarded by Pearson.

To award a result, the following stages must be completed:



Without all this information, we are unable to award a result

The diagram below shows an example of a learner completing a BTEC Level 3 National Diploma (720), the units making up the qualification, the support available and the key milestone dates:

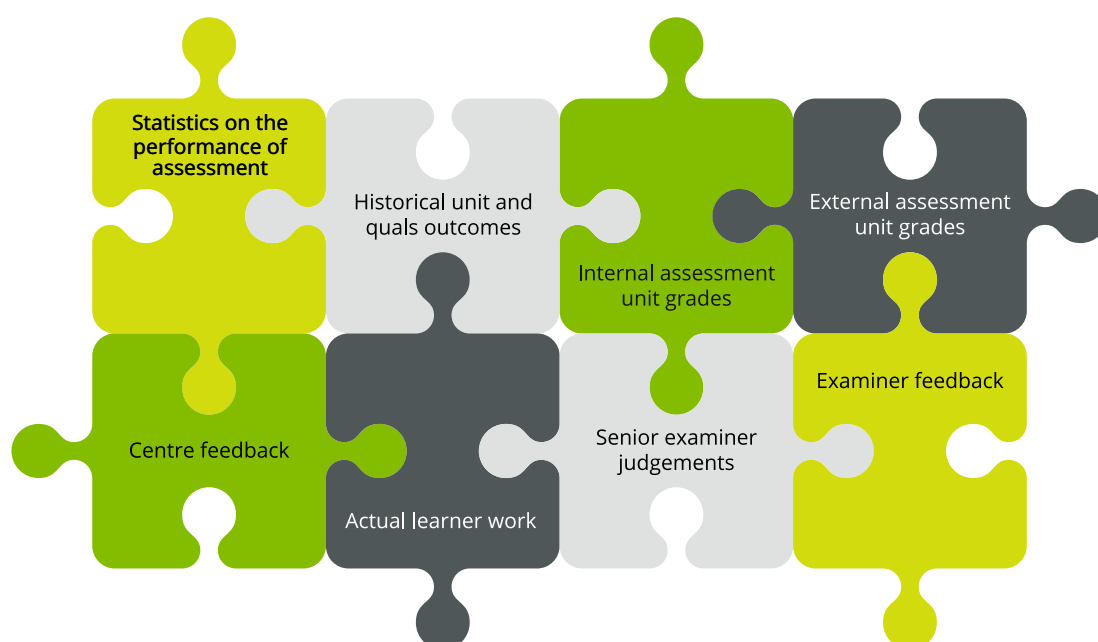




How we will set Grade Boundaries for External Assessments in Summer 2025

A group of subject and technical experts set grade boundaries (the number of marks needed to achieve a certain grade) after each external assessment has taken place. They review a range of evidence to make sure there is fairness, validity and robustness in the grade boundaries recommended.

Just as for A levels and GCSEs, we use qualitative and quantitative information to guide us in how we set grade boundaries. The types of evidence the subject experts look at includes:



The subject experts make a final recommendation considering all the available pieces of evidence. The results are also discussed with other awarding organisations, with oversight from Ofqual.



Appeals & further support



Appeals

For BTEC results for May/June external assessments, the appeals process that is detailed in the **JCQ Guide to Awarding Bodies' Appeal Processes** will apply. We've also created an **Appeals Decision Tree** to help guide you.

Further support

For the latest information on summer results, please visit our **Teaching, Learning and Assessment support page**, or you can **contact us**.

