



Pearson

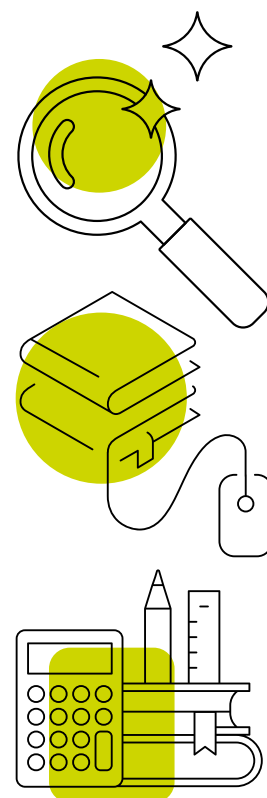
# Recognition of Pearson Qualifications

## Let our graduates know that you consider their credentials

We are the world's leading learning company with over 3.4 million learners around the world each year. Our products and services are used by millions of teachers and learners every day. At Pearson, our mission is to add life to a lifetime of learning.

Our qualifications business makes us the UK's largest awarding body. We are regulated by UK national regulators and we offer a range of academic and vocational qualifications that are globally recognised, with educational excellence rooted in names like Edexcel and BTEC.

Our academic qualifications including International A level and International GCSE are designed for global learners and align closely with our GCE A levels and GCSEs, both part of the UK National curriculum. Our Extended Project Qualification meets the AS level standard and carries UCAS points. Pearson BTECs are vocational qualifications range from the regulated qualifications framework levels of 1-7.



### Recognition

Students taking our qualifications often do so in pursuit of higher education. We would like to provide clear routes to help them realise their opportunities to progress into university.

*Please indicate which qualifications you recognise for entry into to your institution, below:*

#### BTEC (Vocational)

- ☐ BTEC Firsts
- ☐ Pearson BTEC Nationals Level 3
- ☐ Pearson BTEC Internationals Level 3
- ☐ Pearson BTEC Higher Nationals

#### Academic

- ☐ Pearson Edexcel International GCSE
- ☐ Pearson Edexcel GCSE
- ☐ Pearson Edexcel International A Level (IAL)
- ☐ Pearson Edexcel GCE A Level
- ☐ Pearson Edexcel Level 3 Extended Project Qualification

*Please indicate if you are willing to accept the following English language proficiency test:*

- ☐ **PTE Academic**

On confirming you consider the checked qualifications, we will be able to share this information with our students and providers. We promote your recognition by adding your institution's information to dedicated progression resources and websites. If your institution is willing to recognise any/all of our qualifications, please complete the details below and return to **progression@pearson.com**. If you would simply like to know more before confirming, please feel free to contact us at the same address.

University Name:	<input type="text"/>
Your Name	<input type="text"/>
Your Role:	<input type="text"/>
Email:	<input type="text"/>
Student Enquiry Email/Form:	<input type="text"/>
Date:	<input type="text"/>

## Progression pathways with Pearson qualifications

