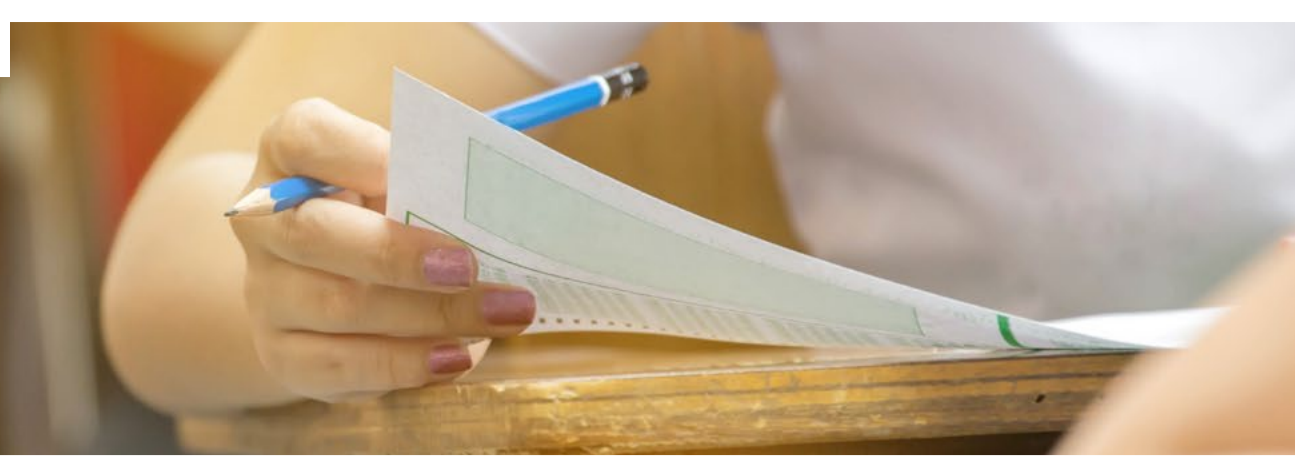


Mocks Service

Spring 2023



Paper-based mocks are delivered to schools and colleges within 3 weeks and **onscreen assessments** set-up within 2 weeks of uploading candidate details via the booking portal.

From receipt of completed mock exams, results will be uploaded to **ResultsPlus** within 21 days for paper-based and 14 days for onscreen.

The table below shows recommended **key dates** for your guidance. Remaining within the recommended booking windows will ensure your students are able to sit their mock exams within the relevant mock exam series.

| Mock exams series | Booking window | Spring series window |
|-------------------|-------------------------|-------------------------|
| Spring 2023 | 07/10/2022 - 27/03/2022 | 04/01/2023 - 26/05/2023 |

Mocks exams available Spring 2023

Exam formats Paper Onscreen Moderation service

| Subject | Live exam series paper date | Paper reference |
|---|-----------------------------|-----------------|
| GCSE (9-1) | | |
| GCSE Maths | | |
| Maths Foundation | Summer 2022 | 1MA1_1F |
| Maths Foundation | Summer 2022 | 1MA1_2F |
| Maths Foundation | Summer 2022 | 1MA1_3F |
| Maths Higher | Summer 2022 | 1MA1_1H |
| Maths Higher | Summer 2022 | 1MA1_2H |
| Maths Higher | Summer 2022 | 1MA1_3H |
| Maths Foundation | November 2022 | 1MA1_1F |
| Maths Foundation | November 2022 | 1MA1_2F |
| Maths Foundation | November 2022 | 1MA1_3F |
| Maths Higher | November 2022 | 1MA1_1H |
| Maths Higher | November 2022 | 1MA1_2H |
| Maths Higher | November 2022 | 1MA1_3H |
| Maths Foundation (Secure Mock) | Mock Set 8 | 1MA1_1F |
| Maths Foundation (Secure Mock) | Mock Set 8 | 1MA1_2F |
| Maths Foundation (Secure Mock) | Mock Set 8 | 1MA1_3F |
| Maths Higher (Secure Mock) | Mock Set 8 | 1MA1_1H |
| Maths Higher (Secure Mock) | Mock Set 8 | 1MA1_2H |
| Maths Higher (Secure Mock) | Mock Set 8 | 1MA1_3H |
| GCSE English | | |
| English Language | November 2022 | 1EN0_01 |
| English Language | November 2022 | 1EN0_02 |
| English Literature - Paper 1: Shakespeare and Post-1914 Literature | Summer 2022 | 1ET0_01 |
| English Literature - Paper 2: 19th-Century Poetry & Novel | Summer 2022 | 1ET0_02 |
| English Language 2.0 | November 2022 | 1EN2_01 |
| English Language 2.0 | November 2022 | 1EN2_02 |
| English Language 2.0 (Secure Mock) | Mock Set 1 | 1EN2_01 |
| English Language 2.0 (Secure Mock) | Mock Set 1 | 1EN2_02 |
| GCSE Science | | |
| Combined Science Biology Foundation | Summer 2022 | 1SC0_1BF |
| Combined Science Biology Higher | Summer 2022 | 1SC0_1BH |
| Combined Science Chemistry Foundation | Summer 2022 | 1SC0_1CF |
| Combined Science Chemistry Higher | Summer 2022 | 1SC0_1CH |
| Combined Science Physics Foundation | Summer 2022 | 1SC0_1PF |
| Combined Science Physics Higher | Summer 2022 | 1SC0_1PH |
| Biology Foundation | Summer 2022 | 1BIO_1F |
| Biology Higher | Summer 2022 | 1BIO_1H |
| Chemistry Foundation | Summer 2022 | 1CH0_1F |
| Chemistry Higher | Summer 2022 | 1CH0_1H |
| Physics Foundation | Summer 2022 | 1PH0_1F |
| Physics Higher | Summer 2022 | 1PH0_1H |
| Combined Science Biology Foundation | Summer 2022 | 1SC0_2BF |
| Combined Science Biology Higher | Summer 2022 | 1SC0_2BH |
| Combined Science Chemistry Foundation | Summer 2022 | 1SC0_2CF |
| Combined Science Chemistry Higher | Summer 2022 | 1SC0_2CH |
| Combined Science Physics Higher | Summer 2022 | 1SC0_2PH |
| Combined Science Physics Foundation | Summer 2022 | 1SC0_2PF |
| Biology Higher | Summer 2022 | 1BIO_2H |
| Biology Foundation | Summer 2022 | 1BIO_2F |
| Chemistry Foundation | Summer 2022 | 1CH0_2F |
| Chemistry Higher | Summer 2022 | 1CH0_2H |
| Physics Foundation | Summer 2022 | 1PH0_2F |
| Physics Higher | Summer 2022 | 1PH0_2H |
| Geography | | |
| Geography A | Summer 2022 | 1GA0_01 |
| Geography A | Summer 2022 | 1GA0_02 |
| Geography A | Summer 2022 | 1GA0_03 |
| Geography B | Summer 2022 | 1GB0_01 |
| Geography B | Summer 2022 | 1GB0_02 |
| Geography B | Summer 2022 | 1GB0_03 |
| History | | |
| History Crime and punishment in Britain, c1000-present and Whitechapel, c1870-c1900: crime, policing and the inner city | Summer 2022 | 1HIA_10 |
| History Medicine in Britain, c1250-present and The British sector of the Western Front, 1914-18: injuries, treatment and the trenches | Summer 2022 | 1HIA_11 |
| History Warfare and British society, c1250-present and London and the Second World War, 1939-45 | Summer 2022 | 1HIA_12 |
| History Migrants in Britain, c800 - present and Notting Hill, c1948-c1970 | Summer 2022 | 1HIA_13 |
| History Russia and the Soviet Union, 1917-41 | Summer 2022 | 1HIA_30 |
| History Weimar and Nazi Germany, 1918-39 | Summer 2022 | 1HIA_31 |
| History Mao's China, 1945-76 | Summer 2022 | 1HIA_32 |
| History The USA, 1954-75: conflict at home and abroad | Summer 2022 | 1HIA_33 |
| History Anglo-Saxon and Norman England, c1060-88 | Summer 2022 | 1HIA_B1 |
| History The reigns of King Richard I and King John, 1189-1216 | Summer 2022 | 1HIA_B2 |
| History Henry VIII and his ministers, 1509-40 | Summer 2022 | 1HIA_B3 |
| History Early Elizabethan England, 1558-88 | Summer 2022 | 1HIA_B4 |
| History Spain and the 'New World', c1490-c1555 | Summer 2022 | 1HIA_P1 |
| History British America, 1713-83: Empire and revolution | Summer 2022 | 1HIA_P2 |
| History The American West, c1835-c1895 | Summer 2022 | 1HIA_P3 |
| History Superpower relations and the Cold War, 1941-91 | Summer 2022 | 1HIA_P4 |
| History Conflict in the Middle East, 1945-95 | Summer 2022 | 1HIA_P5 |
| Modern Languages | | |
| French | | |
| French: Writing Foundation | Summer 2022 | 1FR0_4F |
| French: Writing Higher | Summer 2022 | 1FR0_4H |
| Spanish | | |
| Spanish: Writing Foundation | Summer 2022 | 1SP0_4F |
| Spanish: Writing Higher | Summer 2022 | 1SP0_4H |
| German | | |
| German: Writing Foundation | Summer 2022 | 1GN0_4F |
| German: Writing Higher | Summer 2022 | 1GN0_4H |
| Computer Science | | |
| Computer Science Paper 1: Principles of Computer Science | Summer 2022 | 1CP2_01 |
| AS/A Level | | |
| Maths | | |
| Maths Pure | Summer 2022 | 8MA0_01 |
| Maths Statistics and Mechanics | Summer 2022 | 8MA0_02 |
| Maths Pure (Secure Mock) | Mock set 1 | 8MA0_01 |
| Maths Statistics and Mechanics (Secure Mock) | Mock set 1 | 8MA0_02 |
| Maths Pure Paper 1 | Summer 2022 | 9MA0_01 |
| Maths Pure Paper 2 | Summer 2022 | 9MA0_02 |
| Maths Statistics and Mechanics | Summer 2022 | 9MA0_03 |
| English | | |
| English Lit Component 1 - Drama | Summer 2022 | 9ET0_01 |
| English Lit Component 2 - Prose | Summer 2022 | 9ET0_02 |
| English Lit Component 3 - Poetry | Summer 2022 | 9ET0_03 |
| English Lang Component 1: Language Variation | Summer 2022 | 9EN0_01 |
| English Lang Component 2: Child Language | Summer 2022 | 9EN0_02 |
| English Lang Component 3: Investigating Language | Summer 2022 | 9EN0_03 |
| Politics | | |
| Politics Paper 1: UK Politics and Core Political Ideas - Mock Set 1 | Summer 2022 | 9PL0_01 |
| Politics Paper 2: UK Government and Non-core Political Ideas - Mock Set 1 | Summer 2022 | 9PL0_02 |
| Politics Paper 3A: Comparative Politics: USA - Mock Set 1 | Summer 2022 | 9PL0_3A |
| Politics Paper 3B: Comparative Politics: Global Politics- Mock Set 1 | Summer 2022 | 9PL0_3B |
| International GCSE | | |
| International GCSE Maths | | |
| Maths Foundation | Summer 2022 | 4MA1_1F |
| Maths Foundation | Summer 2022 | 4MA1_2F |
| Maths Higher | Summer 2022 | 4MA1_1H |
| Maths Higher | Summer 2022 | 4MA1_2H |
| Maths Foundation | Shadow papers | 4MA1_1F |
| Maths Foundation | Shadow papers | 4MA1_2F |
| Maths Higher | Shadow papers | 4MA1_1H |
| Maths Higher | Shadow papers | 4MA1_2H |
| International GCSE English | | |
| English Language A - Paper 1: Non-Fiction Texts and Transactional Writing | Summer 2022 - until March | 4EA1_01 |
| English Language A - Paper 2: Poetry and Prose Texts and Imaginative Writing | Summer 2022 - until March | 4EA1_02 |
| English Literature - Paper 1: Poetry and Modern Prose | Summer 2022 - until March | 4ET1_01 |
| English Literature - Paper 2: Modern Drama and Literary Heritage Texts | Summer 2022 - until March | 4ET1_02 |
| English Language A - Paper 1: Non-Fiction Texts and Transactional Writing | January 2023 - from March | 4EA1_01 |
| English Language A - Paper 2: Poetry and Prose Texts and Imaginative Writing | January 2023 - from March | 4EA1_02 |
| English Literature - Paper 1: Poetry and Modern Prose | January 2023 - from March | 4ET1_01 |
| English Literature - Paper 2: Modern Drama and Literary Heritage Texts | January 2023 - from March | 4ET1_02 |
| English Language B - Paper 1 | Summer 2022 - until March | 4EB1_01 |
| English Language B - Paper 1 | January 2023 - from March | 4EB1_01 |