

Pearson Onscreen Platform Offline & Online Mode Installation Guide

Pearson Assessor Dashboard
&
Qualifications Management Application

2018 Edition

Contents

<p>Cookies: This Pearson website stores cookies on your computer. They help the site work better for you, and let us understand how our visitors use the site so that we can keep improving it for you. If you log in, we assume you are happy to accept the site’s use of cookies.</p> <p>Data Protection: The application provides access to sensitive and personal information covered by the Data Protection Act 2018. You must only access and use this information if authorised to do so, if it is for legitimate Pearson business purposes, and if use of the information is made strictly for the purposes intended and agreed between the parties. The information should not be shared with any third parties without the express prior permission of Pearson and remains the property of Pearson. Improper use of personal information is an offence under the Data Protection Act and could lead to prosecution.</p>	<p>Overview & Technical Requirements....p3</p> <p>Installation.....p4</p> <p>Installation & Adding Trusted Sites.....p5</p>
---	--

The Pearson Onscreen Platform Offline Dashboard is the onscreen testing system which is accessed by approved centres to facilitate learners taking onscreen tests.

The software must be installed on each pc where tests take place, it is typically installed on laptops where testing will take place away from the centre and not necessarily in a classroom environment.

The Offline Dashboard software may also be used to run tests in Online mode, but you must ensure there is a strong internet connection so that the test will perform correctly.

This guide will explain how to install the software and add Trusted Sites.



Technical Requirements

Minimum System Requirements:

Windows 7 SP1 or greater
Dual core processor
Minimum 10GB Hard disk space
RAM 512mb
Network Adapter installed
Screen Resolution of 1024x768 or more

Pre-Requisites:

Microsoft .NET Framework 4.5 or higher
Full administration rights during installation
IIS Express 8.0
Port 8080 is open & available
Windows Media Player 11 or higher

Access to the Pearson Assessor Dashboard (PAD) or the Qualifications Management (QMA).

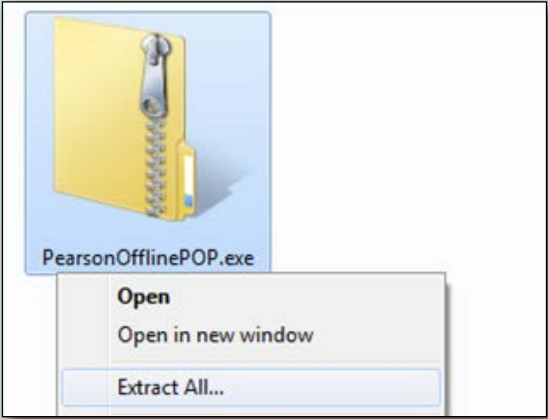
Step 1

Download the POP Offline Dashboard installation file by using the following links:

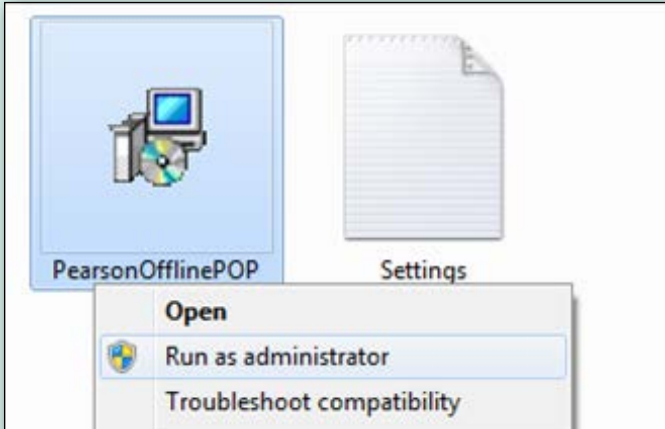
Single PC install: [click here](#)
MSI for network distribution: [click here](#)

Step 2

The installation files are contained in a Zip folder. Once downloaded right click on the Zip folder and from the pop up menu select **'Extract All'**.



Open the folder that has just been extracted and right click the PearsonOfflinePOP.exe file and select **'Run as Administrator'** to begin installation of the POP Offline Dashbaord software.

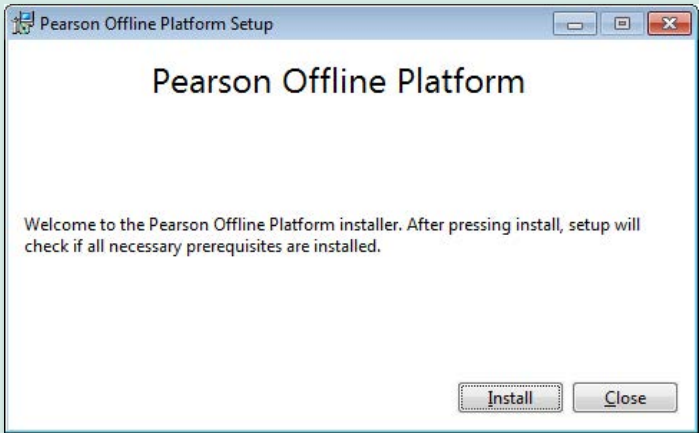


Step 3

The setup will run a diagnostic test to confirm that your system meets minimum technical requirements.

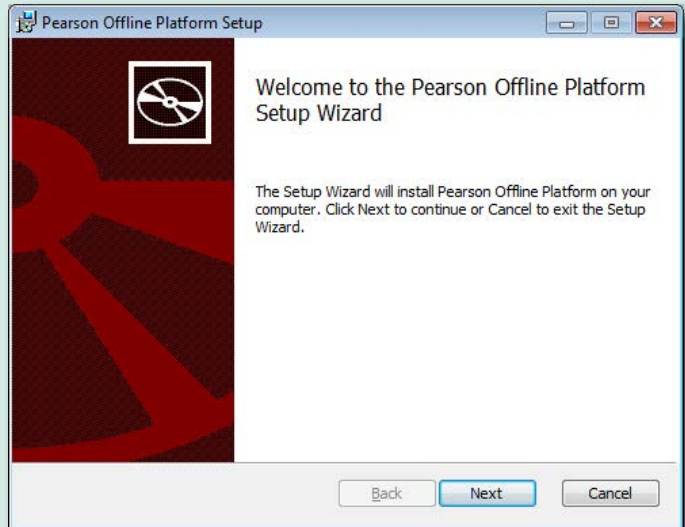
Please note: If your system does not meet the minimum technical requirements, the installation will attempt to install the necessary software, which will require you to accept the terms and conditions.

Click **'Install'** to continue



Step 4:

Click **'Next'** to start the setup wizard and follow the instrutions on the installer.



Installation (continued)

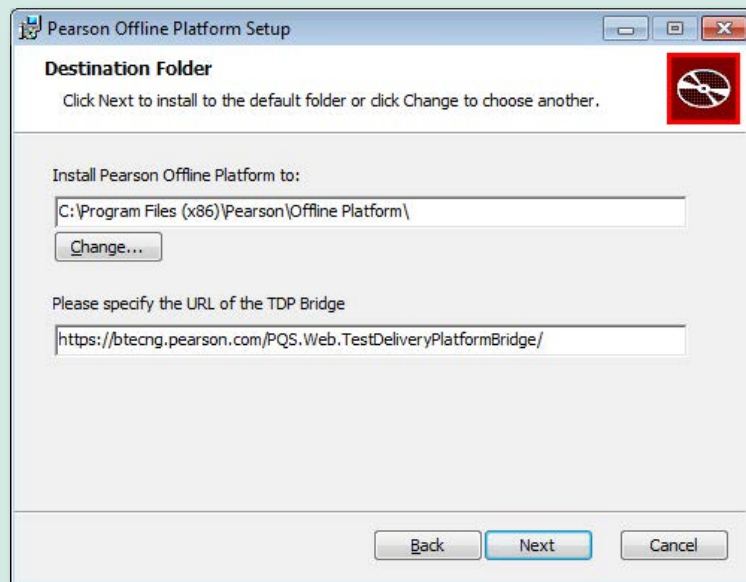
Adding Trusted sites

05

Please note:

During the installation you will be asked to confirm the location where the POP Offline Dashboard will be saved on your computer.

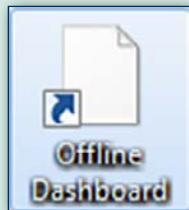
You should also see the following message: 'Please specify the URL of the TDP Bridge' - if you do not see this, it means the file was not extracted as indicated in Step 2. Please cancel the install and revert to Step 2.



Step 5:

Once the installation is complete click '**Finish**' to exit the wizard; you will then see the message 'Setup Successful'.

The Offline Dashboard icon will appear on your desktop as a shortcut.



The POP Offline Dashboard has now been installed on your PC.

Step 1:

To ensure the Pearson Onscreen Platform can communicate with Pearson you need to add 3 addresses to Windows Trusted Sites.

Whichever browser you use you will need to launch Internet Explorer to add these sites.

Step 2:

Once Internet Explorer is open, select settings from top right. The settings are indicated by a cog icon. From the menu select '**Internet options**'.

Step 3:

Select the '**Security**' tab, '**Trusted Sites**' then click the '**Sites**' button.

Step 4:

Add the following addresses to Windows trusted sites by typing the address into the '**Add this website to the zone**' field and clicking the '**Add**' button.

https://127.0.0.1

http://btecng.pearson.com

If you use the Qualifications Management Application you will also need to add:

https://pqg.pearson.com

Once the addresses have been entered click '**Close**' to exit

ALWAYS LEARNING