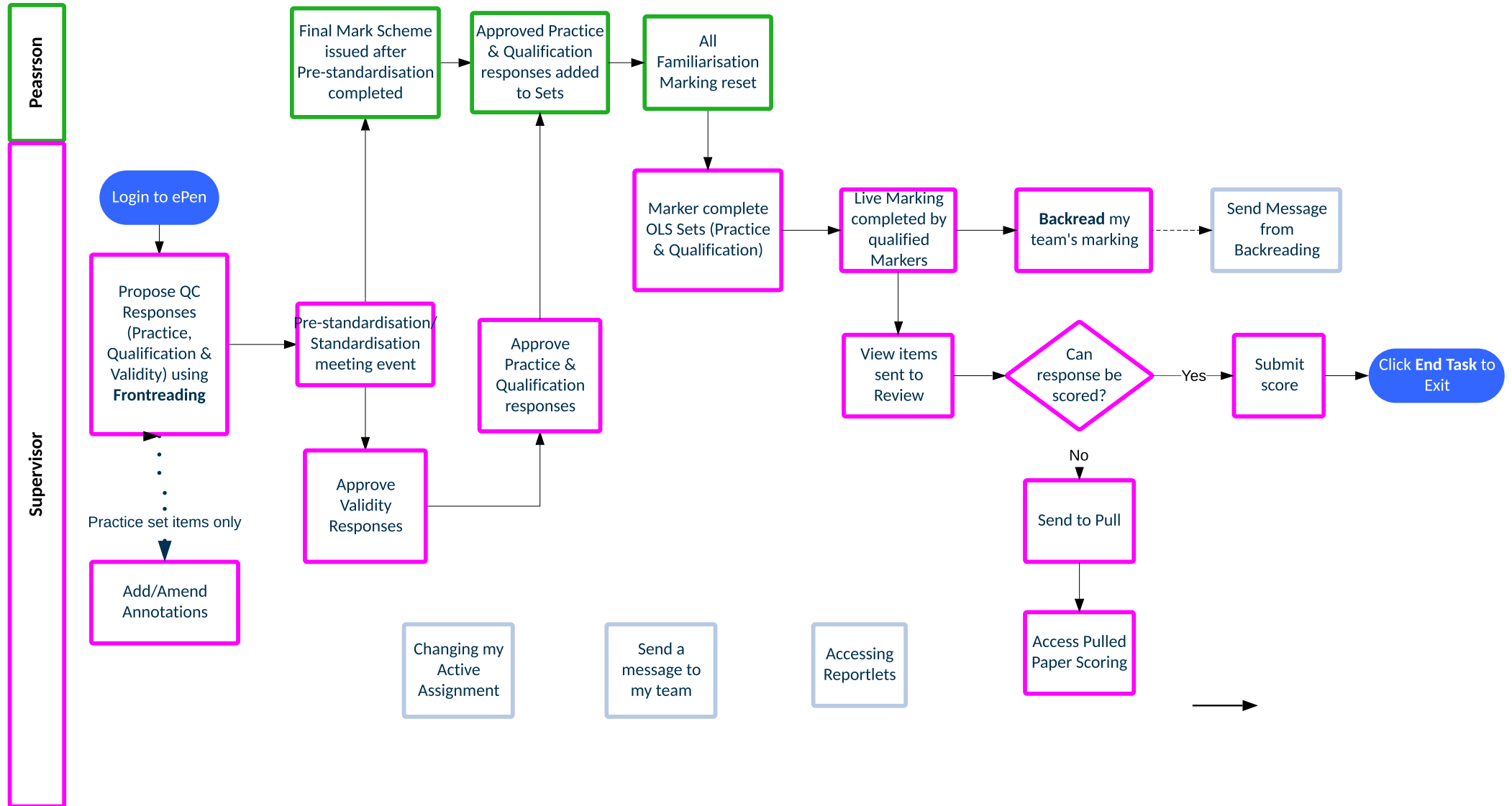


# ePEN2 Supervisor Activity

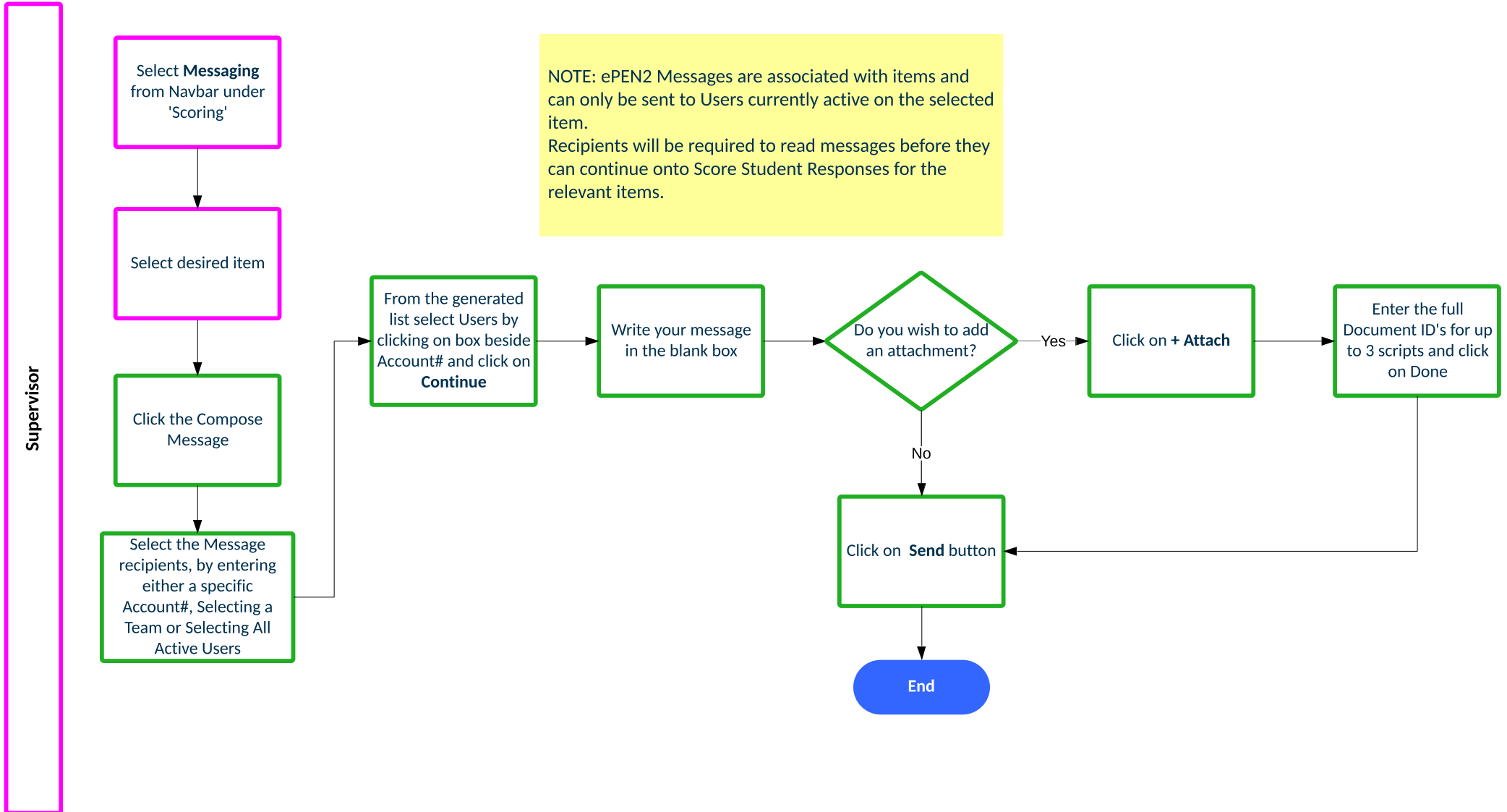
## Overview – Online Standardised (OLS) Papers



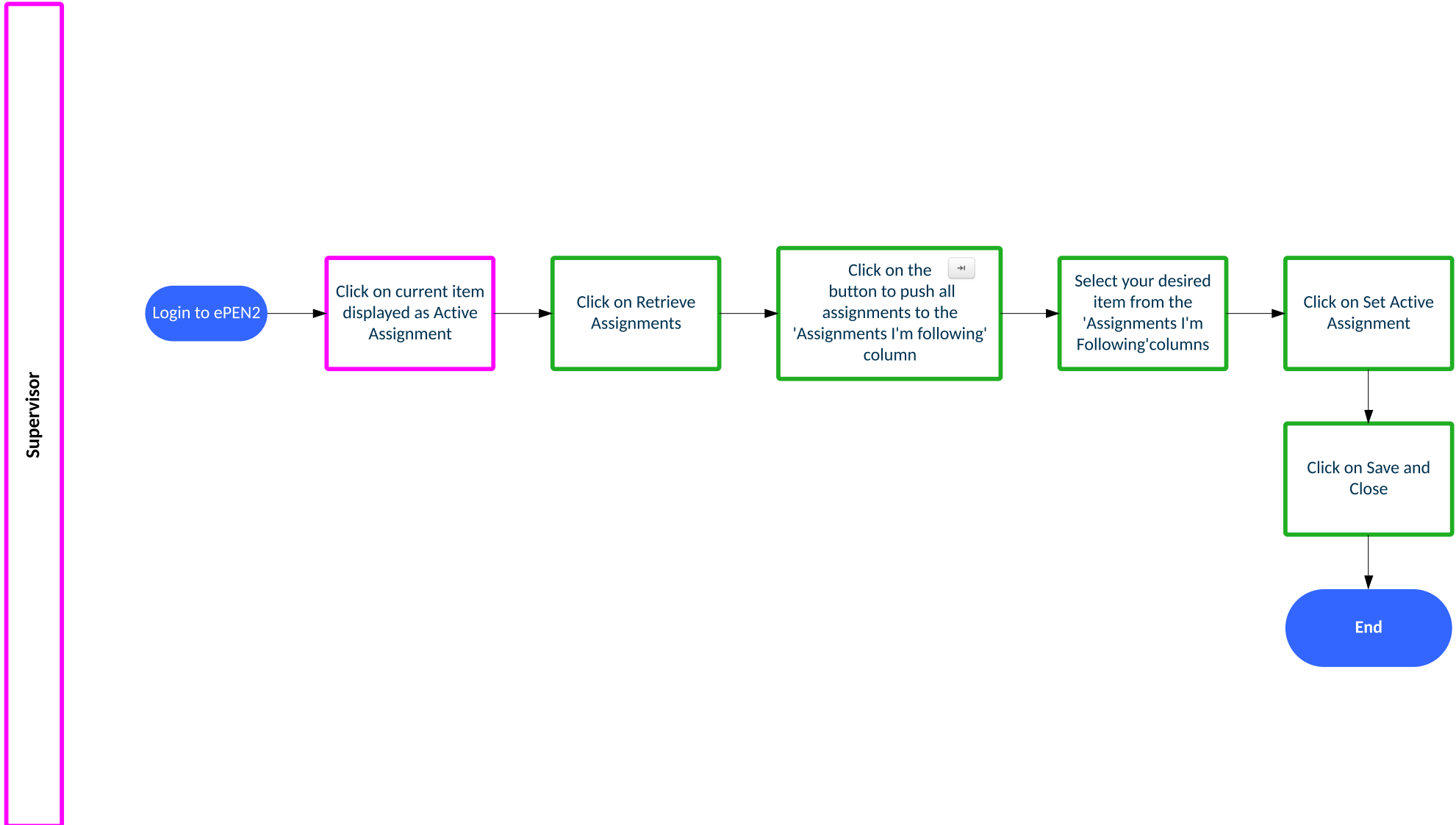


## How do I send an ePEN2 Message to members of my Team?

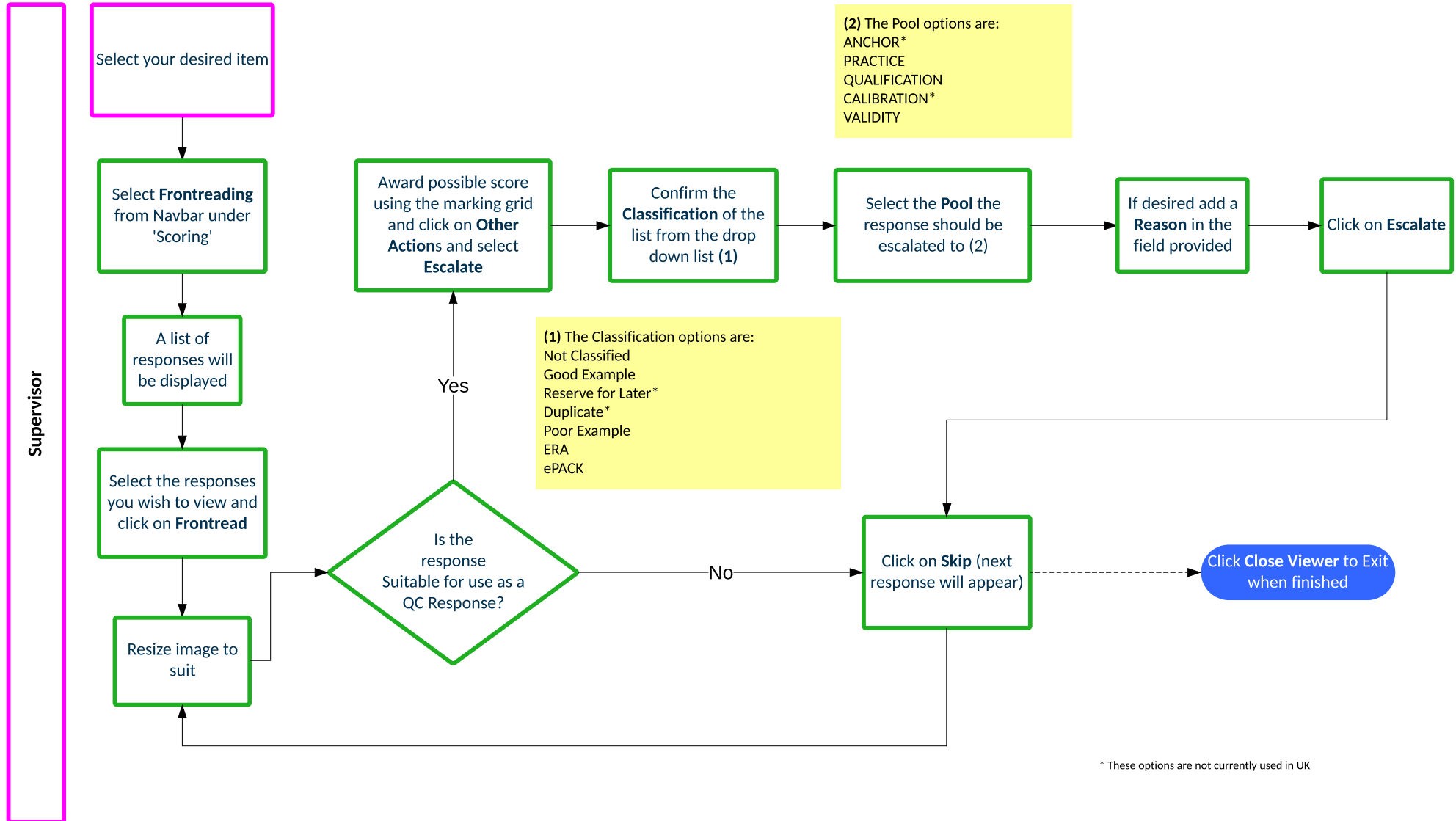
NOTE: ePEN2 Messages are associated with items and can only be sent to Users currently active on the selected item. Recipients will be required to read messages before they can continue onto Score Student Responses for the relevant items.



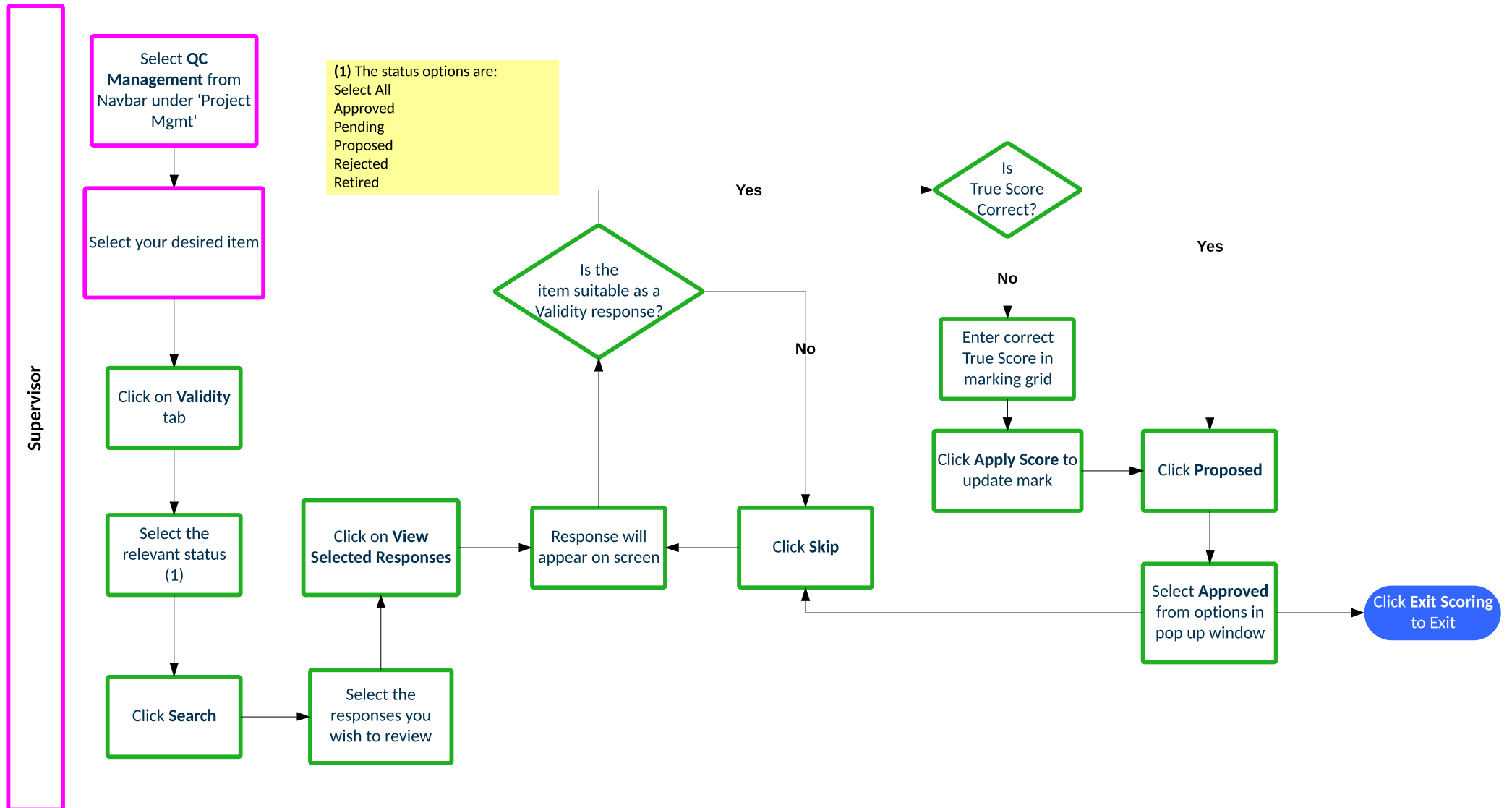
## How do I change my Active Assignment?



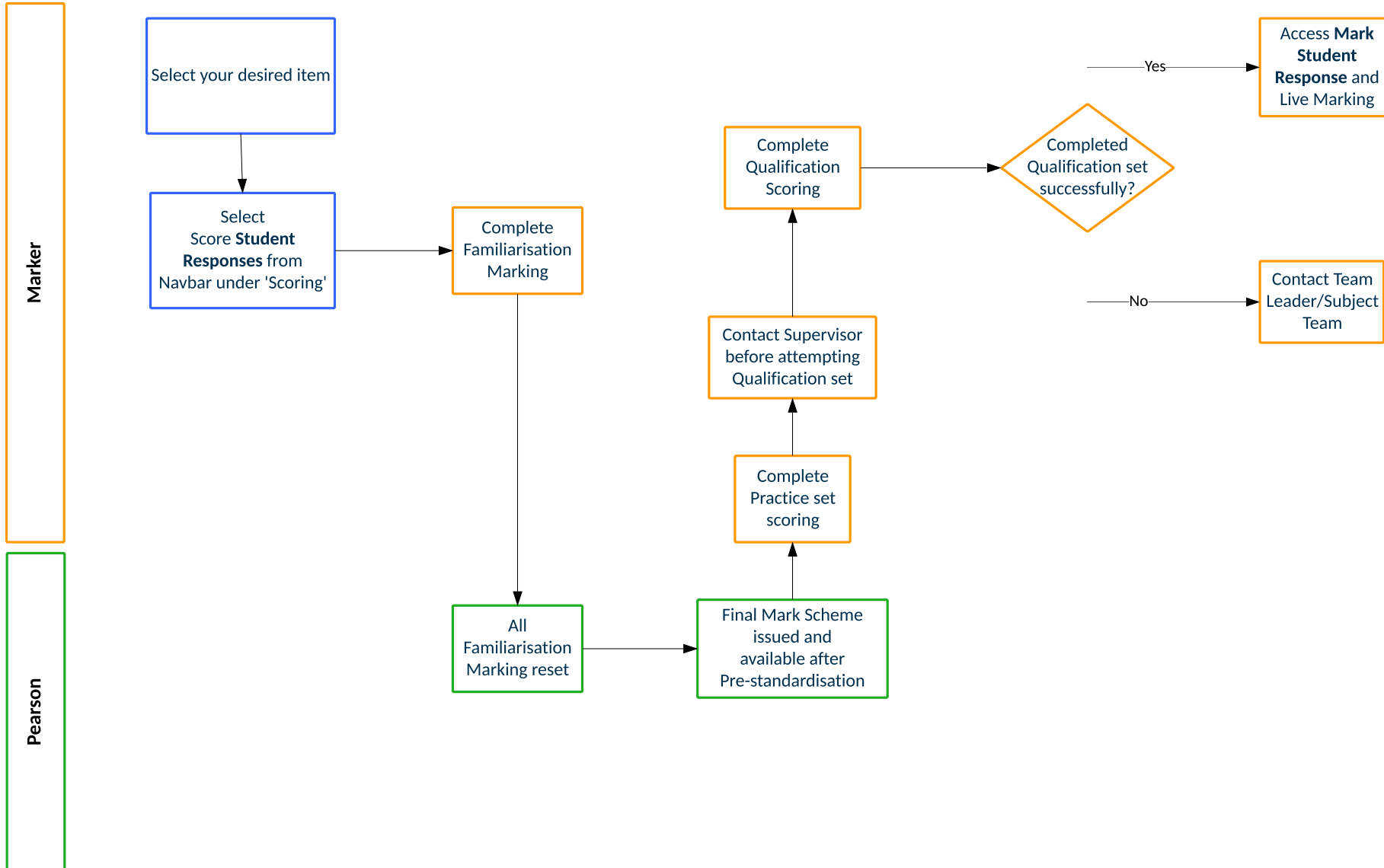
# How do I propose QC Responses?



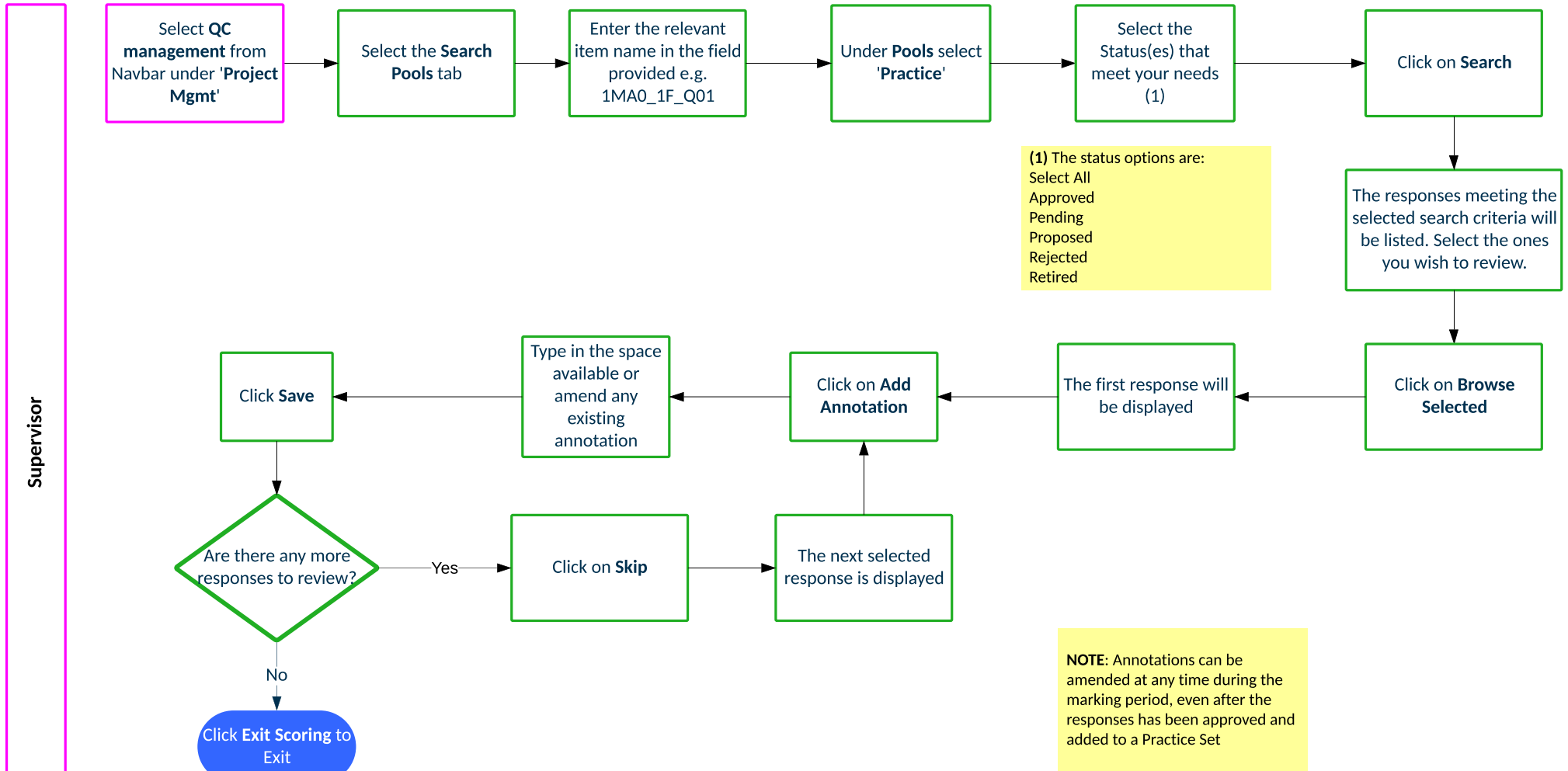
# How do I approve Validity Items after Standardisation?



# Online Standardisation Overview

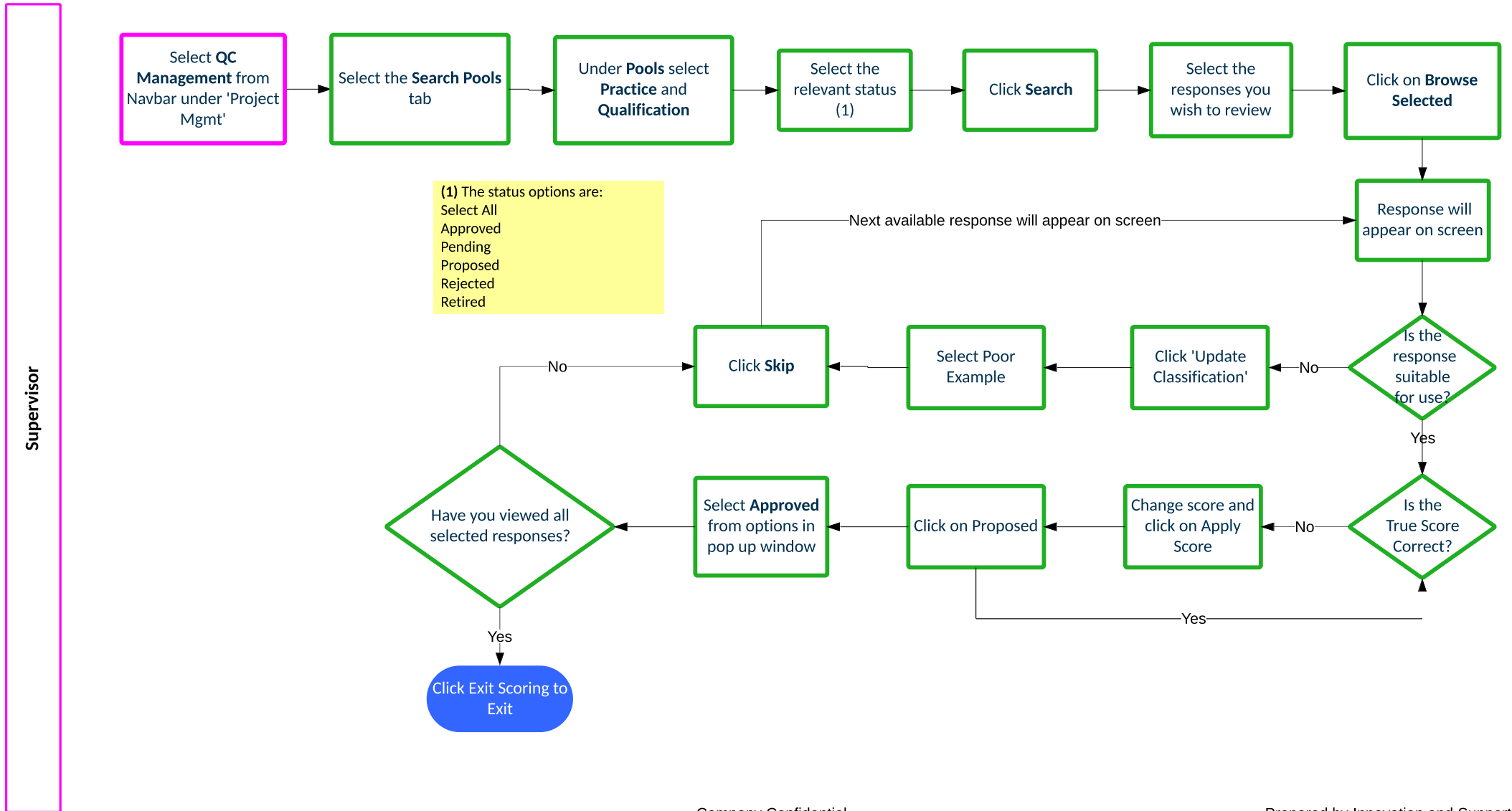


# How do I add or amend annotations on Practice responses?



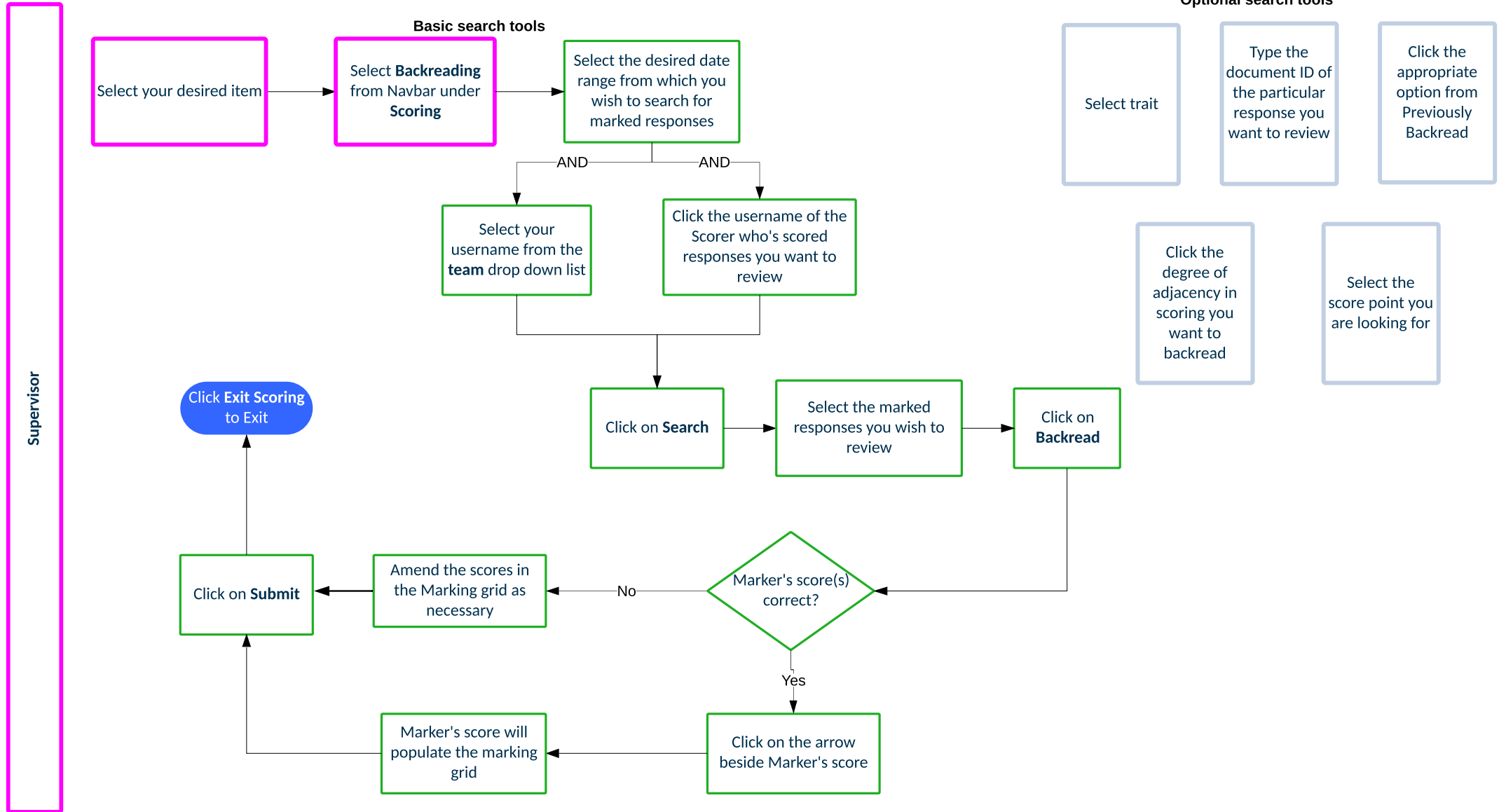
Supervisor

# How do I approve Practice & Qualification responses?

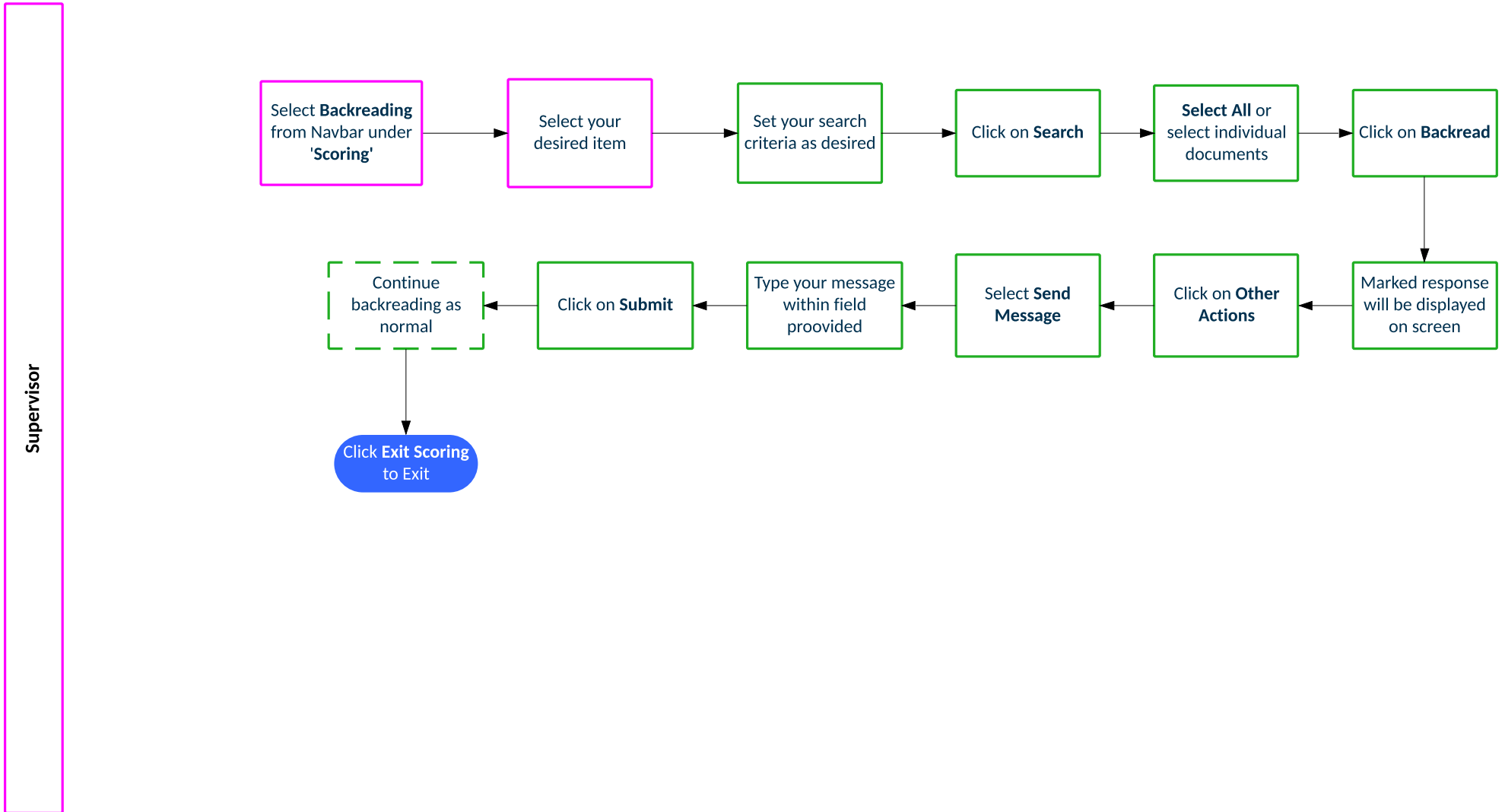




## How do I backread my team's marking?



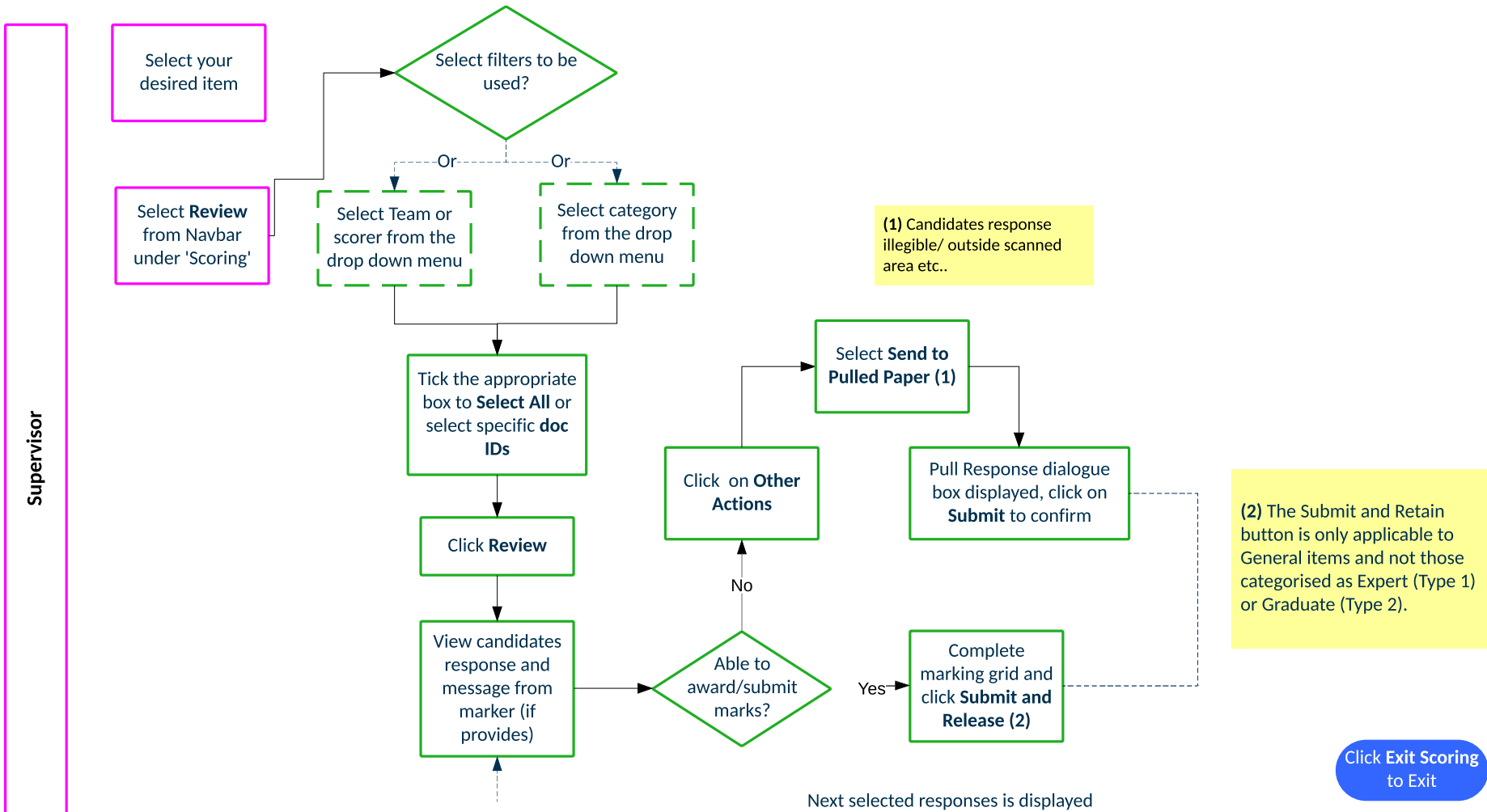
## How do I send a message with an image attached from backreading?



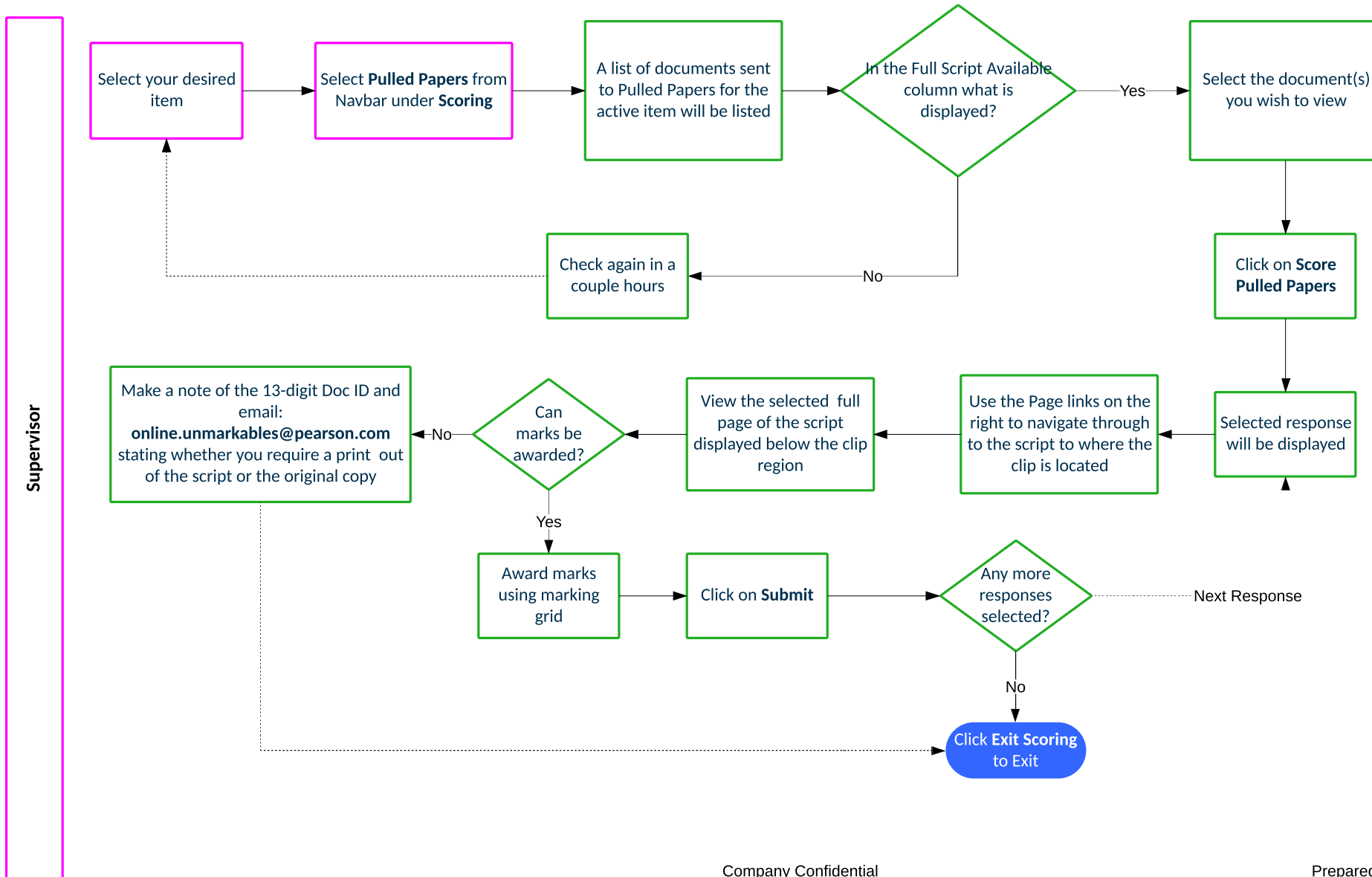


Pearson

# How do I view items sent to Review?



## How do I mark items in Pulled Paper Scoring?



## How do I access reportlets?

