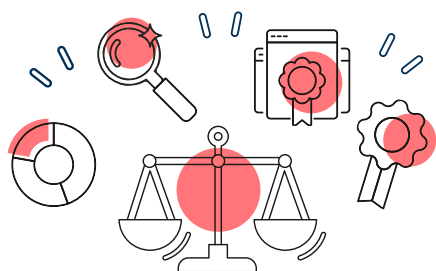


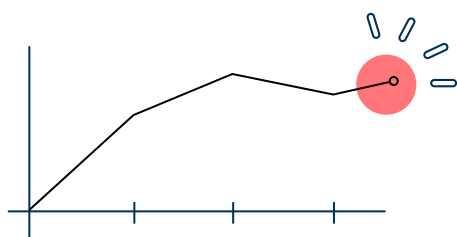
Understanding grade boundaries 2024 - International qualifications

With the two-year transition to pre-pandemic grading now complete, normal grading arrangements will continue for International GCSE, International AS and A level qualifications for 2024. Overall outcomes are therefore broadly in line with those of 2023, though grade boundaries at subject level may vary, as in any other year, to reflect any difference in both the demand of the question papers and the ability of the cohort.

We have used data from 2023 as a starting point for grading. Using data is important to support alignment between series.



Senior examiners have then reviewed the quality of student work over a range of marks and recommended grade boundaries based on all the available evidence.



The grade boundaries proposed by senior examiners may vary each year. We know that some variations in the level of demand of assessment are inevitable, particularly as we continually review the performance of our assessments to improve accessibility.

Such improvements are aimed at enabling students to access questions appropriately, enhance their experience and build confidence. Equally, the ability of the cohort will vary from series to series and grade boundaries may be different to secure fair and appropriate grading standards. This ensures that it is not easier or harder to get a grade between one year and the next.