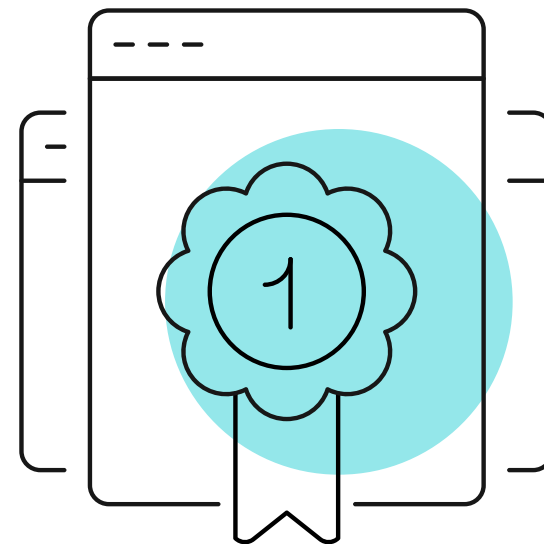


General Qualifications

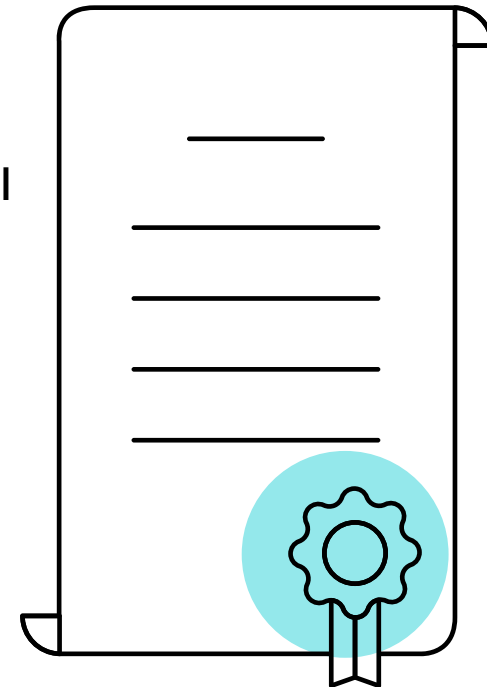
**Pearson Edexcel Qualifications:
fees for UK centres**

1 August 2024 – 31 July 2025



Contents

- ➔ About our qualification fees
- ➔ Entry and registration deadlines for 2024 – 2025
- ➔ Our subject fees
 - ➔ General Certificate of Secondary Education (GCSE)
 - ➔ General Certificate of Education (GCE) AS and A level
 - ➔ Supplementary AS/A level
 - ➔ International GCSE
 - ➔ Entry Level Certificate (Academic)
 - ➔ Edexcel Award
 - ➔ Edexcel Project and Extended Project
 - ➔ Edexcel Functional Skills Levels 1 & 2
- ➔ Glossary



About our qualification fees

As always, we're here to support you as you deliver Pearson Edexcel qualifications, and we're continually investing in qualification support in the run-up to each exam series and beyond.

In this document, you'll find full information on our Pearson Edexcel General Qualifications fees for UK centres for the November 2024, January 2025 and June 2025 exam series, as well as a reminder of the full range of support that these fees cover over the life of the qualification.

We recognise that school budgets are stretched, and we will always aim to keep fee increases to a minimum, while providing the best possible support. We'll also continue to invest in additional qualification support and further improvements to our qualifications in the 2024/25 academic year and beyond.

Your qualification fees are paid towards the end of the course delivery, but they include the support for delivering each qualification from first teaching, to successful completion of the course, assessment and issuing certificates.

As ever, our qualifications team is dedicated to ensuring you have the best possible experience with us, by providing learning materials, technologies, world-class qualifications and assessments to help everyone everywhere aim higher and fulfil their true potential.



Entry and registration deadlines for 2024 – 2025

Our entry deadlines and late fee dates for each exam series are listed below. We have also included the date when basedata will be available on our website. This is the date you can start submitting entries via Electronic Data Interchange (EDI) or on Edexcel Online at edexcelonline.com.

If you're having difficulty meeting an entry deadline, please contact us before the deadline and we will support your entry submission process as much as possible.

If you require information on EDI or basedata, please go to quals.pearson.com/edi-reg.

The basedata and qualifications sections of the **Information Manual** contain listings of subject availability in each exam series and should be used alongside this document.

Exam Series	Basedata issued	Entry deadline	Late fees charged from	Amendment fees charged from	High late fees charged from
November 2024 (GCSE English Language and Maths only)	02/09/2024	04/10/2024	05/10/2024	02/11/2024	02/11/2024
November 2024 (International GCSE)	12/08/2024	13/09/2024	14/09/2024	14/10/2024	14/10/2024
June 2025 (GCSE, GCE, ELC, AEA, L3 Core Maths)	21/11/2024	21/02/25	22/02/2025	22/04/2025	22/04/2025
June 2025 (all other)	21/11/2024	21/03/2025	22/03/2025	22/04/2025	22/04/2025

Our subject fees – GCSE

The table below indicates the fees payable for each qualification when you make an entry.

Pearson Edexcel General Certificate of Secondary Education (GCSE)	
Subject	GCSE
Arabic	£52.20
Art and Design	£50.40
Astronomy	£48.60
Biology	£52.75
Biblical Hebrew	£52.20
Business	£53.35
Chemistry	£52.75
Chinese	£52.20
Combined Science (Double Award)	£99.65
Computer Science	£54.85
Citizenship Studies	£45.30
Design and Technology	£50.95
Drama	£52.20
English Language	£54.30
English Literature	£54.30
French	£50.60
Geography (A and B)	£52.95

Pearson Edexcel General Certificate of Secondary Education (GCSE)

Subject	GCSE
German	£50.60
Greek	£52.20
Gujarati	£52.20
History	£52.95
Italian	£52.20
Japanese	£52.20
Mathematics	£52.95
Music	£50.95
Persian	£52.20
Physical Education	£53.35
Physics	£52.75
Portuguese	£52.20
Psychology	£48.60
Religious Studies (A and B)	£57.70
Russian	£52.20
Spanish	£50.60
Statistics	£53.35
Turkish	£52.20
Urdu	£52.20

Our subject fees – AS and A level

The table below indicates the fees payable for each qualification when you make an entry.

Pearson Edexcel General Certificate of Education (GCE) AS and A level		
Subject	AS level	A level
Arabic		£148.55
Art and Design		£120.20
Biology (Salters Nuffield and B)	£63.45	£121.70
Business	£70.10	£126.25
Chemistry	£63.45	£121.70
Chinese		£148.55
Design and Technology: Product Design		£240.35
Drama and Theatre		£198.45
Economics A	£70.10	£126.25
Economics B		£126.25
English Language	£63.45	£111.70
English Language and Literature	£63.45	£111.70
English Literature	£63.45	£111.70
French		£141.05
Further Mathematics	£74.45	£155.05
Geography	£69.80	£155.05
German		£141.05
Greek		£148.55

Pearson Edexcel General Certificate of Education (GCE) AS and A level

Subject	AS level	A level
Gujarati		£148.55
History	£63.45	£138.10
History of Art		£183.40
Italian		£148.55
Japanese		£148.55
Mathematics	£74.45	£155.05
Mathematics (Advanced Extension Award)		£65.25
Music		£199.40
Music Technology	£108.20	£213.05
Physical Education		£202.05
Persian		£148.55
Physics	£63.45	£121.70
Politics	£67.25	£133.10
Portuguese		£148.55
Psychology	£63.45	£128.75
Religious Studies	£63.45	£145.30
Russian		£148.55
Spanish		£141.05
Statistics		£155.05
Turkish		£148.55
Urdu		£148.55

Pearson Edexcel Mathematics in Context

Subject	Fee
Mathematics in Context (Level 3 Core Maths)	£69.15

Supplementary AS/A level Fees

Subject	Fee
Provision of oral examinations for AS/A level candidates conducted by Pearson	£45.75

International Fees

Subject	Fee
International GCSE (Excluding Modern Foreign Languages)	£64.60
International GCSE Modern Foreign Languages	£100.00
International GCSE Double Award Science	£129.20

Pearson Edexcel Entry Level Certificate (Academic)

Subject	Fee
Entry Level Certificate for Religious Studies - NEW for first assessment 2025	£30.05
All other ELC subjects	£30.05

Pearson Edexcel Award

Subject	Fee
Edexcel Award subjects (Levels 1 or 2)	£23.90
Edexcel Award subjects (Level 3)	£23.90

Pearson Edexcel Level 2 Extended Mathematics Certificate

Subject	Fee
Level 2 Extended Mathematics Certificate - NEW for first assessment 2025	£48.50

Pearson Edexcel Project and Extended Project

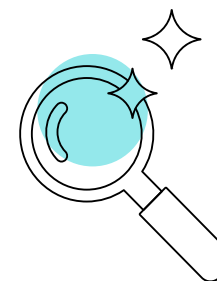
Subject	Fee
Foundation & Higher Project	£43.40
Extended Project	£68.60

Pearson Edexcel Functional Skills Levels 1 and 2

Subject	Fee
English: Speaking, Listening and Communications only	Free
English: Reading only	£10.99
English: Writing only	£10.99
Information and Communication Technology (ICT)	£21.98
Mathematics	£21.98

All entries received after the published entry deadline may attract a late entry fee or higher late unit fee. Please refer to the Information Manual for exact entry dates and further details.

This can be downloaded from quals.pearson.com/infomanual



Glossary

Ad hoc inspection fees

Please note that all centres will be subject to periodic ad hoc inspections during the conduct of the examinations. These are to ensure that the examinations are being administered correctly. Every effort will be made to minimise expenditure but the cost of these inspections will be re-charged to the centre by the inspecting authority as part of quality assurance.

Late Fees

The late fee charged is based on the unit fee for the qualification. From the late fee date, the entry (unit or subject) fee is doubled. The entry fee is trebled after the high late fee date.

Changes to entries

You will not be charged a late fee for changing candidate details, such as name amendments unless a certificate has been issued. All tier or option changes will be classified as an amendment. For these cases the amendment deadline will apply.

Refunds

If you withdraw an entry before the high late fee date, you will be refunded the entry fee. After this date, you will not be issued with a refund unless you can provide supporting medical evidence that the candidate could not complete the unit/s.

Late cash-in fee

We will charge £4.30 for late requests for a subject award (cash-in) received after the entry deadline. We will charge £46 for late requests for a 2024 – 2025 award (cash-in) made after the deadline for Review of Marking and Moderation.

Certifying Statement of Results

A Certifying Statement of Results (CSOR) is an official copy of the final examination results held by Pearson. We can send a CSOR to candidates, educational institutions, professional bodies or employers who need us to confirm results. For prices and to apply for a Certifying Statement of Results, please visit quals.pearson.com/ReplacementCertificates.

Payment of Fees

Fees due within 30 days from the date of invoice should be made payable by cheque, bankers draft or by bank transfer to Pearson. We request that your centre number and relevant invoice numbers are included in the detail field of the bank transfer or written on the back of the cheque or bank draft. Our bank details are included on invoices.

Prices correct at time of publication but are subject to further changes.

Introduction, guidance and this edition: ©Pearson 2024

Website: qualifications.pearson.com

June 2024

Pearson Education Limited, Registered in England and Wales No. 872828

Registered Office: One90, High Holborn, London WC1V 7BH035