



POP Offline Installation Guide

Edexcel Online

About this guide

This user guide is written for centre staff who use Pearson Onscreen Platform. This can be accessed by the following users:

- Anyone with administration rights / permission to install software on your computer

By installing the Pearson Onscreen Platform, it allows you to Manage, Launch a Test Offline and Upload Test Results.

Within this guide, you will learn the steps required to manage the following activities:

- Download and install Pearson Onscreen software
- How to configure web browser for trusted sites

If you do not have administration rights or permission to install software on your computer, you will need to address this with your IT department.

Contents

02

1 Before you start P3

2 Installation P6

3 Configuration P10

Before you start

Section Overview

In order to be able to install the Pearson Onscreen Platform your computer needs to meet the minimal specification requirements for the software to work effectively.

1

This part of the guide is to help you understand and install the Pearson Onscreen Platform (Offline). You will need to ensure your computer meets the minimum system requirements in order to be able to use the software.

What is Pearson Onscreen Platform (Offline)?

It is the new onscreen testing system which is accessed by all approved centres that facilitate onscreen assessments with no active internet connection required for testing.

System requirements.

Minimum System Requirements:

- Windows 7 SP1 or greater
- Dual core processor
- Minimum 10GB Hard disk space
- RAM 512mb
- Network Adapter installed
- Screen Resolution of 1024x768 or more

Pre-requisites:

- .NET Framework 4.5
- Offline platform installer
- Full administration rights during installation
- IIS Express 8
- Port 8080 is open
- Access to the Edexcel Online website.

Cookies:

This Pearson website stores cookies on your computer. They help the site work better for you, and let us understand how our visitors use the site so that we can keep improving it for you. If you log in, we assume you are happy to accept the site's use of cookies.

Data Protection:

The application provides access to sensitive and personal information covered by the Data Protection Act 1998. You must only access and use this information if authorised to do so, if it is for legitimate Pearson business purposes, and if use of the information is made strictly for the purposes intended and agreed between the parties. The information should not be shared with any third parties without the express prior permission of Pearson and remains the property of Pearson. Improper use of personal information is an offence under the Data Protection Act and could lead to prosecution.

Installation

Section Overview

This section guides you through the download of the Person Onscreen Platform and the process for installing the software.

During the installation a diagnostic check will be performed. If any of the software is missing, the system will attempt to install this for you which will require you to accept the terms and conditions before doing so.

2

This part of the guide explains how to install Pearson Onscreen Platform (Offline).

Step 1

Download the Pearson Onscreen Platform (Offline) installation file by using following links:

Single PC install: [click here](#)

MSI for network distribution: [click here](#)

Current version number: **6.1.6115.1**

Step 2

The installation files are contained in a Zip folder. Once downloaded right click on the Zip folder and from the pop up menu select 'Extract All'.

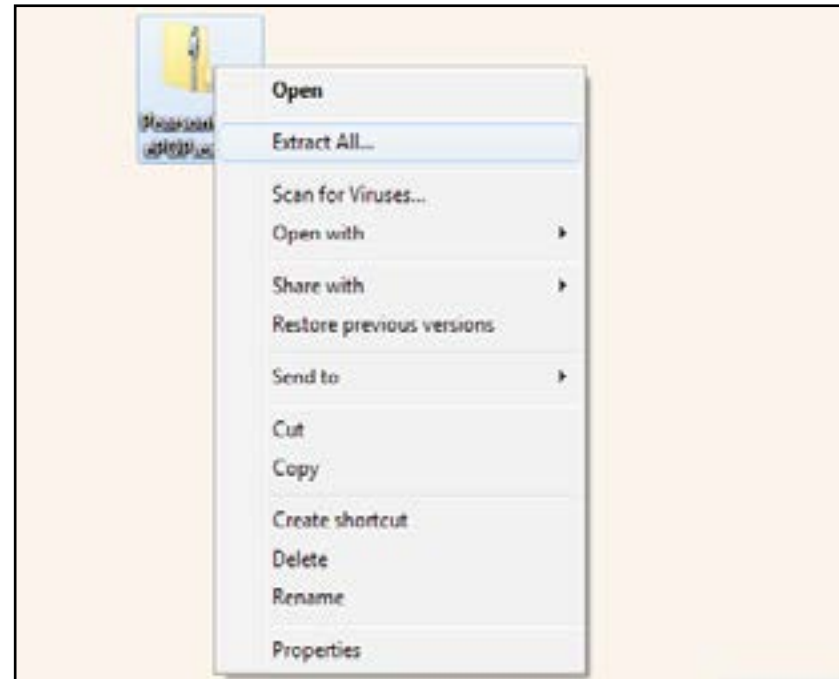
Open the folder that has just been extracted and double click the PearsonOfflinePOP.exe file to begin installation of the Pearson

Onscreen Platform (Offline) software.

Step 3

The setup will run a diagnostic test to confirm that your system meets minimum technical requirements. Click 'Install' to continue.

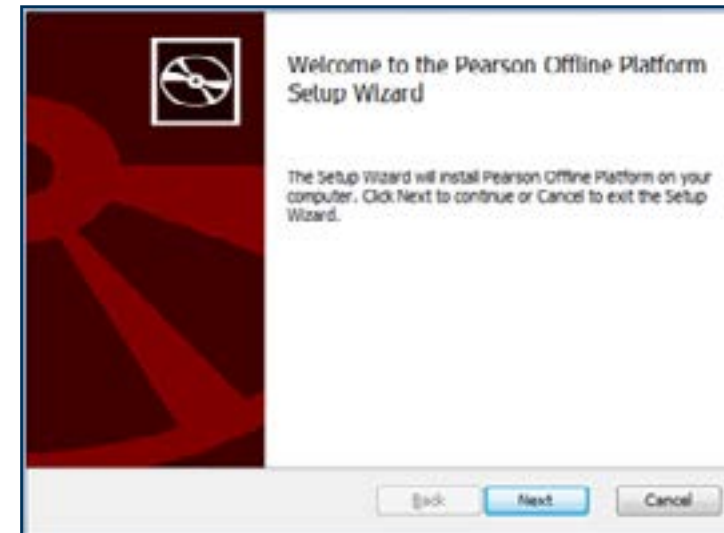
Please note: If your system does not meet the minimum technical requirements, the installation will attempt to install the necessary software, which will require you to accept the terms and conditions.



Installation (continued)

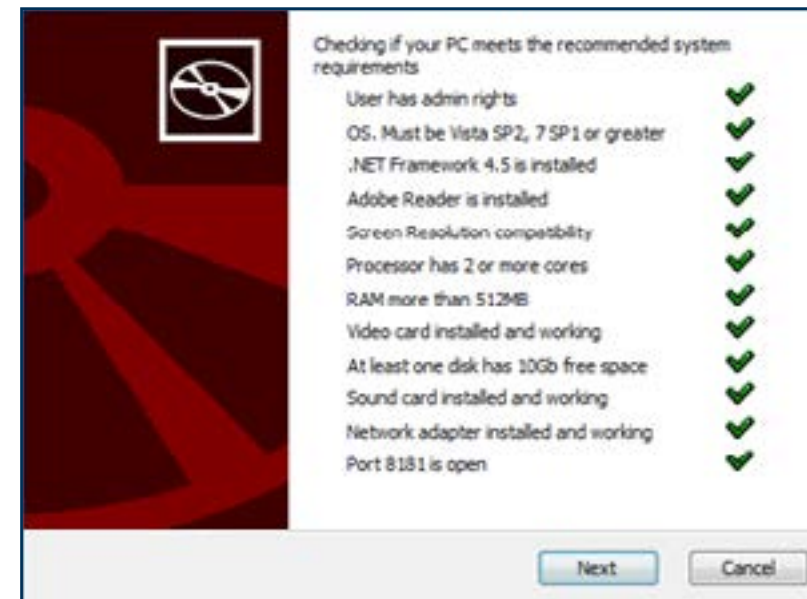
Step 4

Click 'Next' to start the setup wizard which will check the minimum technical requirements.



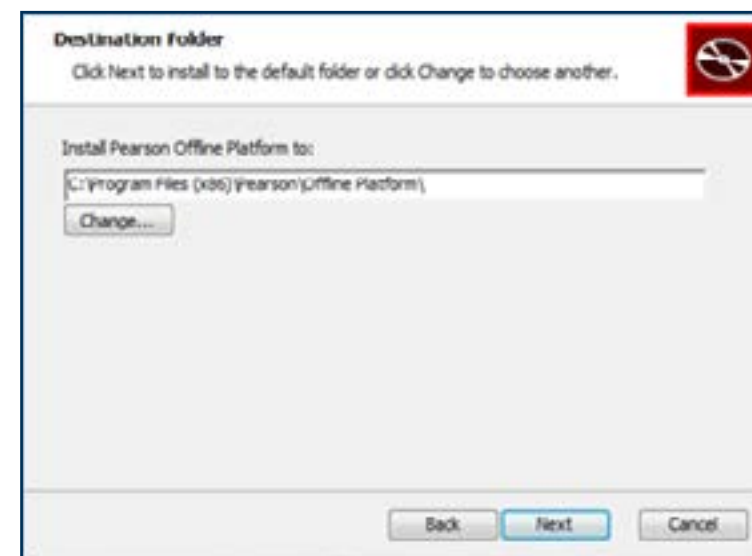
Step 5

Click 'Next' once the technical requirements have been met.



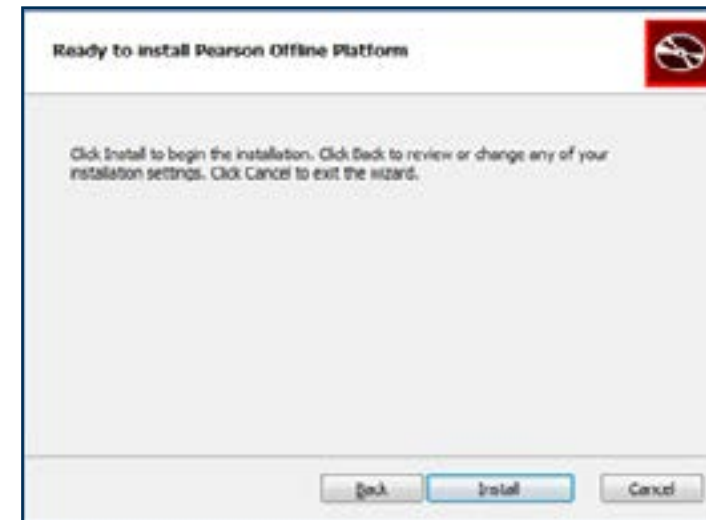
Step 6

Confirm the location where Pearson Onscreen Platform (Offline) is to be saved on your computer and click 'Next'.



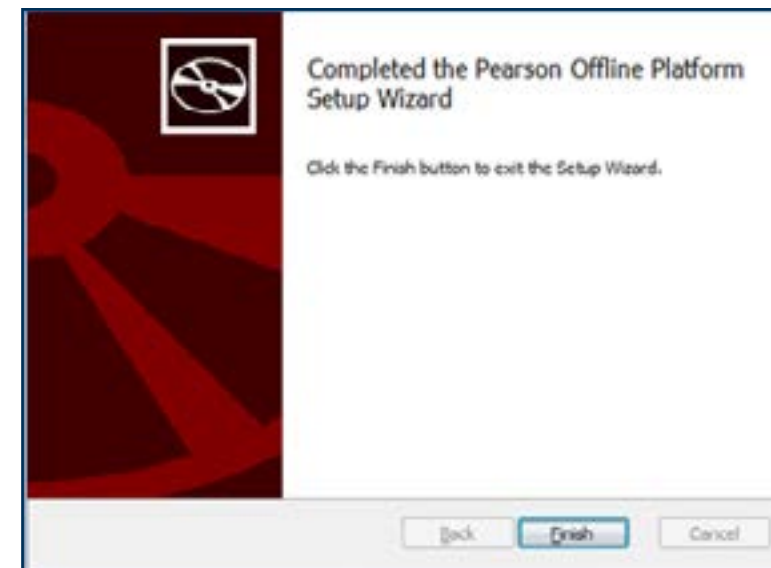
Step 7

Click **'Install'** to continue, **'Back'** to change your settings, or **'Cancel'** to close the installation.



Step 8

Once the installation is complete click **'Finish'** to exit the wizard. Pearson Onscreen Platform (Offline) has been installed on your the computer.



Configuration

Section Overview

This section guides you through the process of configuring your web browser which makes sure that the Person Onscreen Platform communicates with Pearson effectively.

In order to do this you will be required to add 2 web addresses to your trusted sites. No matter which web browser you use we advise that you use Internet Explorer to make these changes.

Configuration

This part of the guide explains how to configure Windows Trusted Sites to ensure Pearson Onscreen Platform can communicate with Pearson. You must have permission to change Windows Internet settings.

Step 1

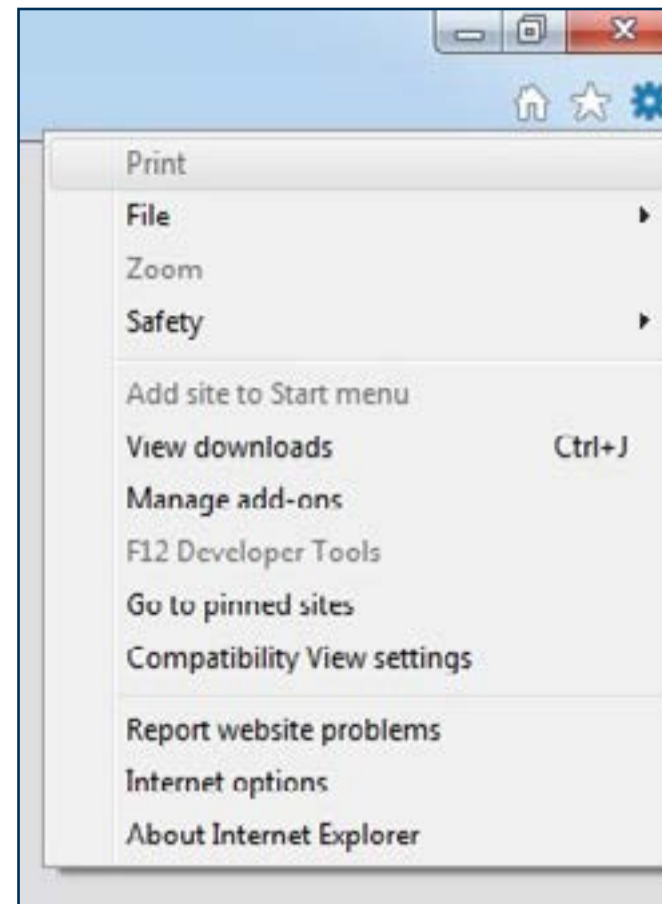
To ensure the Pearson Onscreen Platform can communicate with Pearson you need to add 2 addresses to Windows Trusted Sites.

Whichever browser you use you will need to launch Internet Explorer to add these sites to Windows.



Step 2

Once Internet Explorer is open, select settings from top right. The settings are indicated by a cog icon. From the menu select 'Internet options'.



Step 3

Select the 'Security' tab, 'Trusted sites' then click the 'Sites' button.

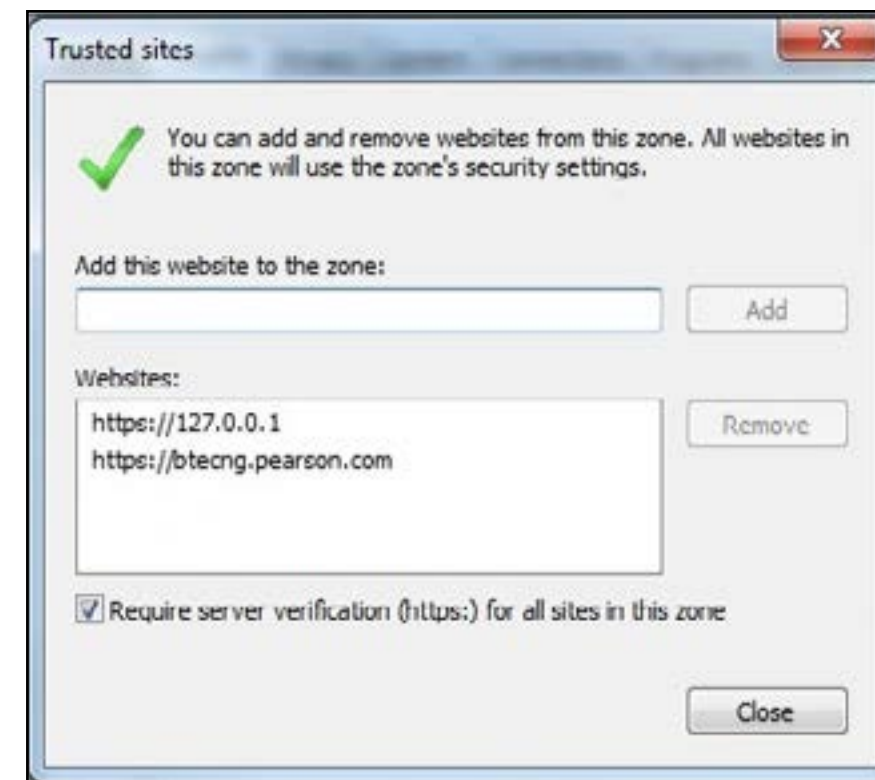


Step 4

One by one add the following 2 addresses to Windows trusted sites by adding the address into the 'Add this website to the zone' field and clicking the 'Add' button.

https://127.0.0.1
https://btecng.pearson.com

Once both address have been entered click 'Close' to exit

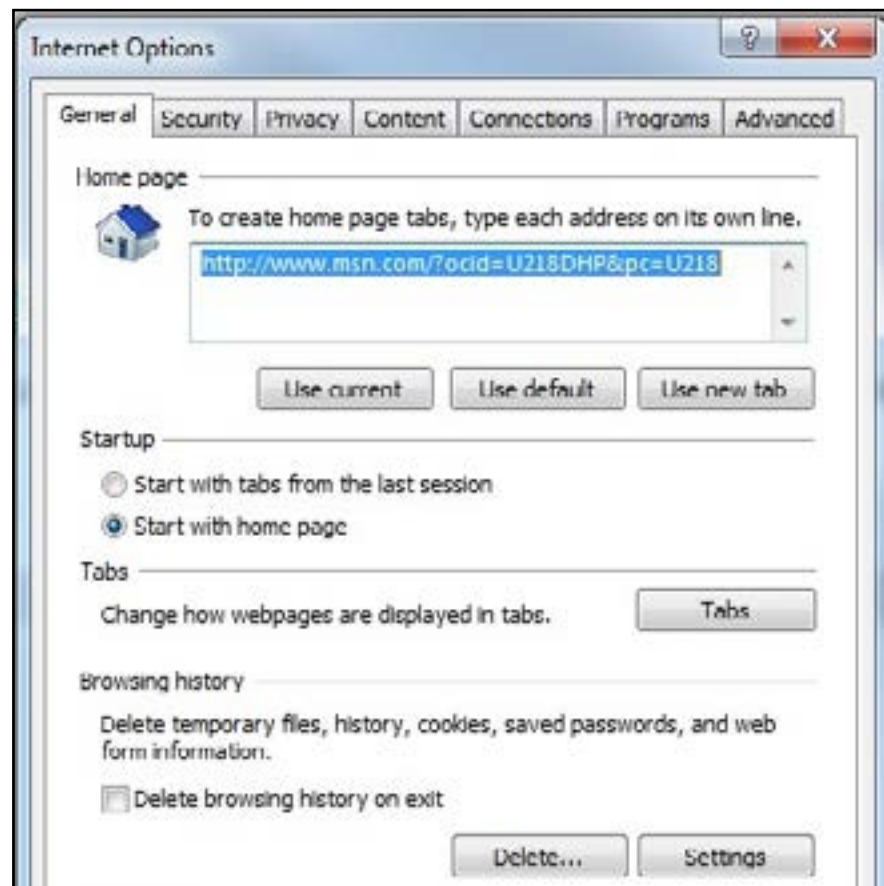


Configuration (continued)

Step 5

For the changes to take effect you need to delete some temporary internet files.

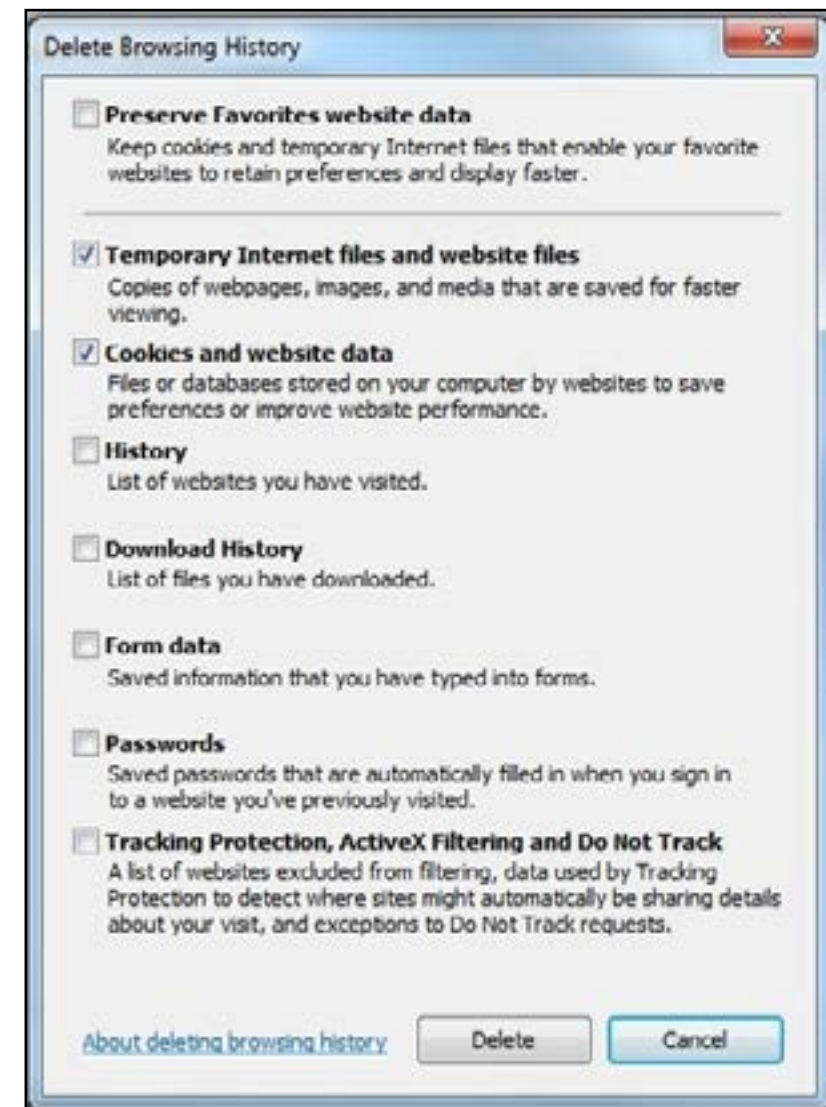
Select the 'General' tab and then the 'Delete' button from the browsing history section.



Step 6

Ensure 'Temporary Internet files' and 'Cookies and website data' are ticked. You can untick the other options if you wish.

Click 'Delete' and then 'Ok' to finish. You will be notified when the deletion is complete.



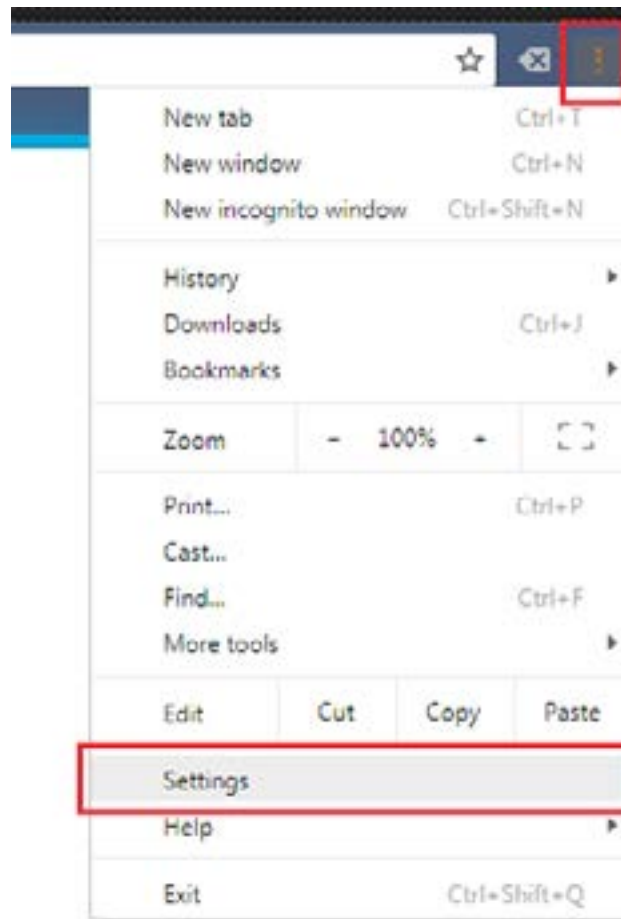
Configuration (continued)

Next thing you'll need to check is that your browser's pop-ups are allowed, otherwise you will notice that nothing happens when you click "Download Test".

Step 1

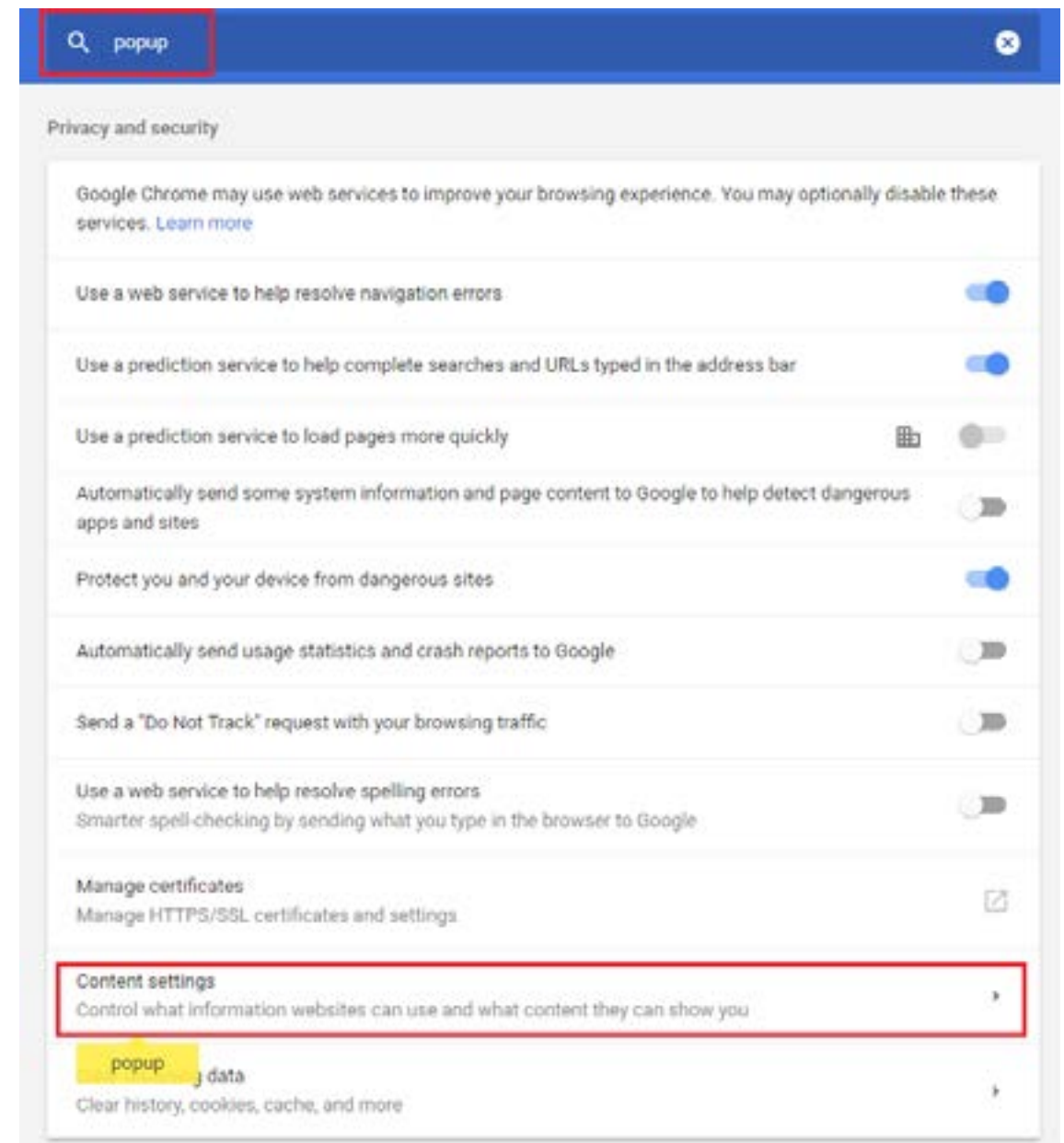
Open your web browser and go to Settings.

As most of the networks have this option disabled in Internet Explorer, we will show how to set this up using 'Google Chrome'.



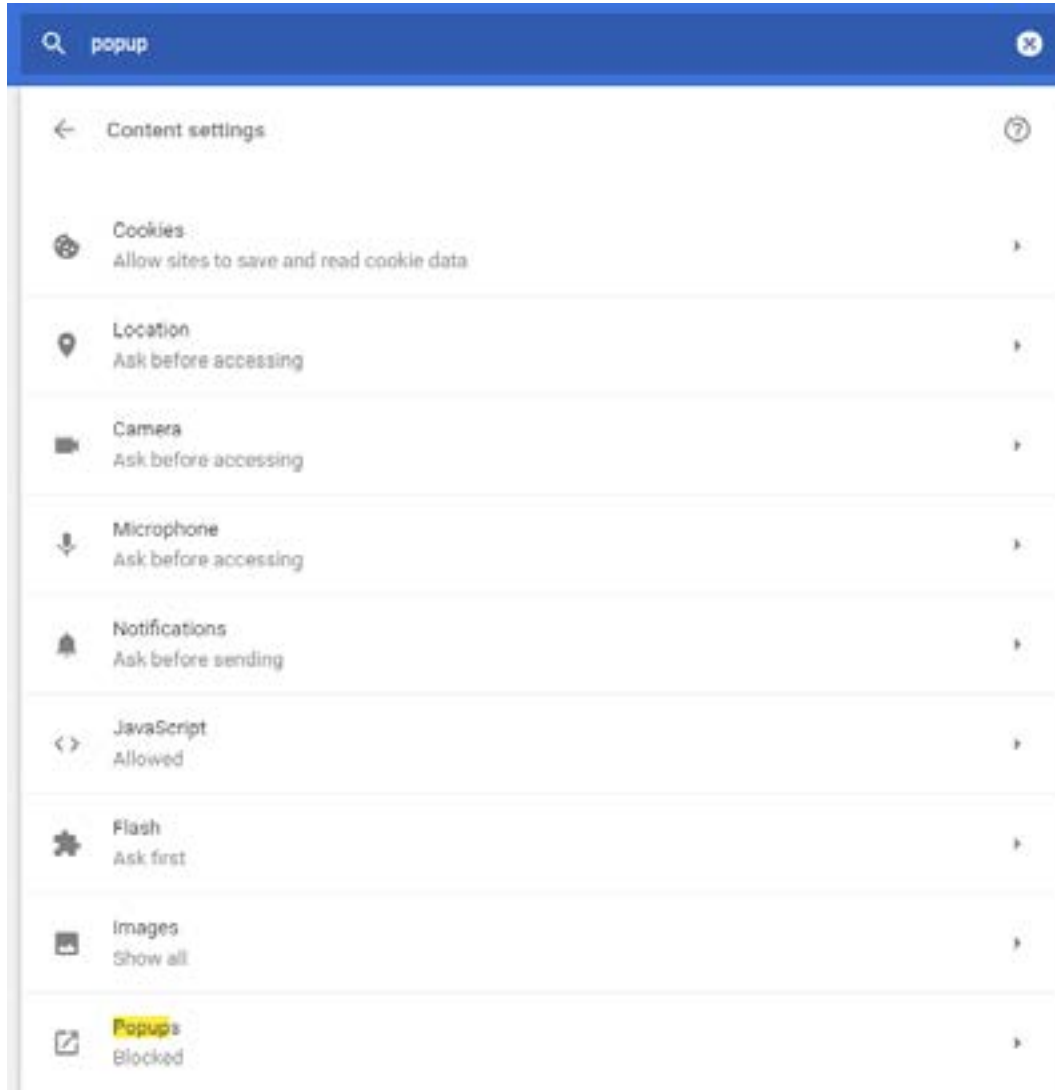
Step 2

Type 'popup' in the search bar on the top and select 'Content settings'.



Step 3

Select 'popups'.



Step 2

Click 'Add' and type in the following address in the correct format and press Add:

<https://btecng.pearson.com:443>

You should now see the following on your screen:



ALWAYS LEARNING