

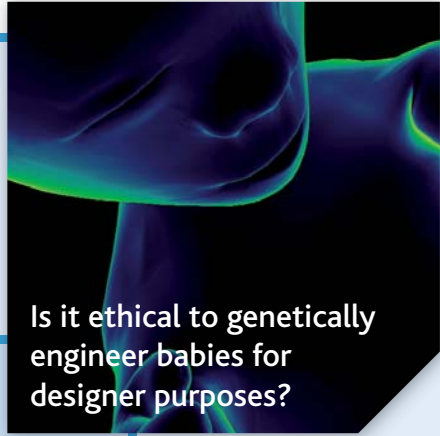
# Your Guide to Project

## Level 1 (Foundation) and Level 2 (Higher)

Do violent computer games contribute to anti-social behaviour?



Is it ethical to genetically engineer babies for designer purposes?

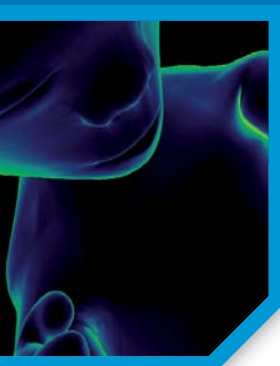


How can sports fitness improve through football?



Will we find life in the solar system?





# What is the Project Qualification?

Project is an exciting new qualification that puts you in control, giving you the chance to explore something that really interests you. Project is a compulsory part of the Diploma, but if you're studying GCSEs or BTECs, two levels are available:

- **Level 1 (Foundation)** is worth half a GCSE grade D to G
- **Level 2 (Higher)** is worth half a GCSE grade A\* to C

## Is it right for me?

Project has no exams, just coursework, so if you're self-motivated and enjoy working independently - whether it's more practical, like designing and making something, or involves researching and writing - then Project is for you. You can:

- learn more about something that interests you
- investigate a controversial topic
- expand your knowledge of one of your GCSE subjects
- gain practical skills that will help you in further education or in a job

## What's involved?

With Project, you get a say in what you want to study. With the help of your teacher, you choose a topic to explore in-depth – one that interests you, which you might like to study in the future, or pursue as a career. It's a good idea to link it to one of your GCSE or BTEC subjects, because you'll already have some background knowledge of these, and you'll be able to gain a greater understanding of them.

For the Foundation and Higher Projects, you have to produce a written **Report** or an **Artefact** (something you make or design). Below are the titles of some Projects that students have already completed.

### Report

- Have organic foods changed the way we shop and eat?
- Should children be forced to exercise?
- Should human cloning be allowed?
- Have smoking habits and attitudes changed since the indoor smoking ban?
- Do food labels affect how people shop?

### Artefact

- Design and make a mask for a character in a play or a film.
- Design and produce a teaching aid to help young children understand numbers.
- Produce a series of photographs and text for a publicity brochure.
- Make a short video film to promote a local attraction where you live.
- Redesign an everyday object to make it more fashionable.



## What will I learn and how will I be marked?

Once you've agreed the title of what you want to study with your teacher you'll be given guidance to help you develop the skills you need to manage your Project. Whatever Project you choose, you'll be expected to work independently, supported by your teachers.

You'll learn and be assessed on:

- How well you manage your work, such as planning your time and choosing what methods to use to complete your Project
- How you select and use information and resources throughout the Project
- The range of skills you develop and use to achieve what you set out to do
- How effectively you review your own work

In other words it's not what you produce but the process you used to manage your Project. What you learn and how you perform throughout the time spent on your Project all count towards your final grade.

The skills you learn to complete your Project will be really helpful, whether you want to go into further education, such as progressing onto GCE courses, or get a job.

## Next steps

- Talk to your teachers about taking Project.
- Visit the Edexcel website to find out more and to see examples of some of the work other students have done (called 'exemplar material').

[www.edexcel.com/Project](http://www.edexcel.com/Project)





## What students have said

Below is just some of the feedback we've received from students like you about Project.

*"The best thing about it is the way we can learn about and work at what interests us."*

*"I've learnt a lot about self-motivation through this work."*

*"I feel proud that my project is totally my own research and work."*

*"No other course gives such scope for individuality and originality."*

Edexcel  
190 High Holborn,  
London WC1V 7BH  
Tel: 0844 576 0027  
Fax: 020 7190 5700  
[www.edexcel.com](http://www.edexcel.com)

### About Edexcel

Edexcel, a Pearson company, is the UK's largest awarding body offering academic and vocational qualifications and testing to schools, colleges, employers and other places of learning here and in over 85 countries worldwide. Edexcel Limited. Registered in England and Wales No. 4496750  
Registered office: 190 High Holborn, London WC1V 7BH. BTEC is a registered trademark of Edexcel Ltd.