



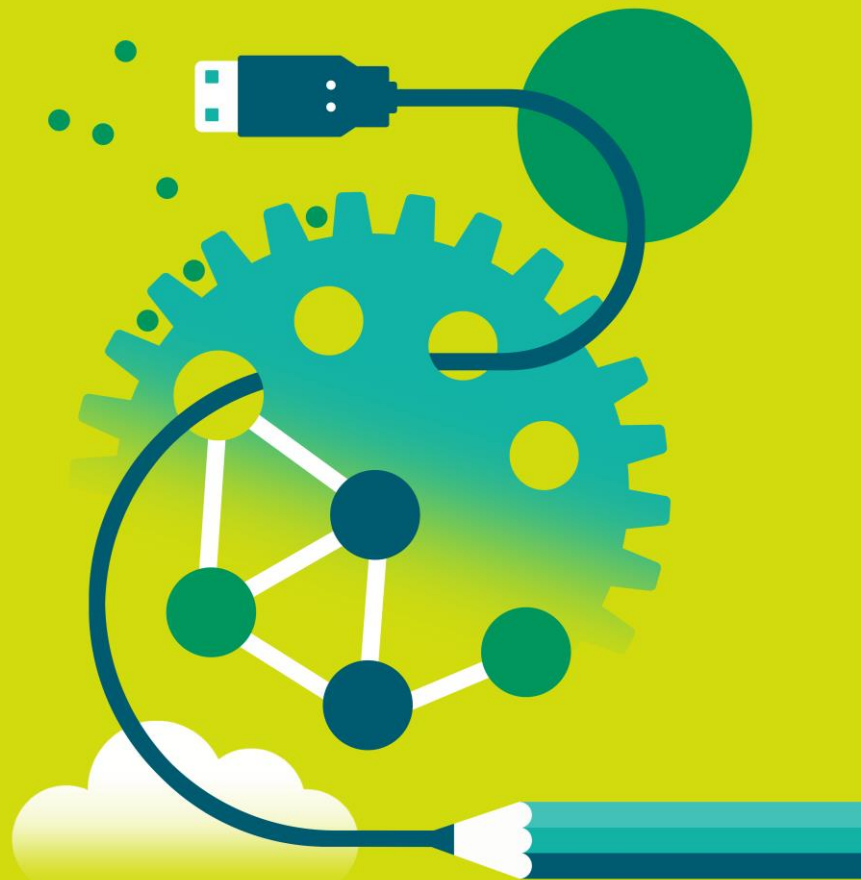
Pearson

# Lists Quick Guide: Technical Certificates

## What's on the List?

Subject-by-subject guide to Pearson and BTEC qualifications included in the post-16 level 2 performance measures for 2018, 2019 and 2020 results.

**Version 8:** July 2018



# Choose your sector

<b>Applied Science</b>	<b>Business and Enterprise</b>	<b>Childcare</b>	<b>Construction</b>	<b>Creative Arts, Media and Music</b>
<b>Engineering</b>	<b>Health and Social Care</b>	<b>Hospitality and Catering</b>	<b>Information Technology</b>	<b>Land-based</b>
	<b>Sport</b>	<b>Travel and Tourism</b>	<b>Warehousing and Storage</b>	

# **Applied Science**

## **Technical Certificate List in England**

**Post-16 Level 2**

# Technical Certificate List (Level 2)

## Applied Science

Your subject teams are here to help, so please do give them a ring on 020 7010 2190 or drop them a line at [TeachingScience@pearson.com](mailto:TeachingScience@pearson.com) if you have any questions.

Qualification Number (QN)	Size	Headline measures 2018	Headline measures 2019	Headline measures 2020
<b>Pearson BTEC Level 2 Technical in Laboratory Science</b>				
<a href="#">603/0461/3</a>	Diploma (360 GLH)	N/A	Yes	Yes

Got a question? [Check our FAQs](#)

# **Business and Enterprise**

## **Technical Certificate List in England**

**Post-16 Level 2**

# Technical Certificate List (Level 2)

## Business and Enterprise (page 1 of 2)

Your subject teams are here to help, so please do give them a ring on 020 7010 2182 or drop them a line at [TeachingBusiness@pearson.com](mailto:TeachingBusiness@pearson.com) if you have any questions.

Qualification Number (QN)	Size	Headline measures 2018	Headline measures 2019	Headline measures 2020
<b>Pearson BTEC Level 2 Diploma in Business Administration</b>				
<a href="#">601/3405/7</a>	Diploma (226-351 GLH)	Yes	N/A	N/A
<b>Pearson BTEC Level 2 Certificate in Understanding Enterprise and Entrepreneurship</b>				
<a href="#">500/6247/5</a>	Certificate (210 GLH)	Yes	N/A	N/A
<b>Pearson BTEC Level 2 Technical in Business Enterprise</b>				
<a href="#">603/0482/0</a>	Certificate (240 GLH)	N/A	Yes	Yes
<b>Pearson BTEC Level 2 Technical in Business Administration</b>				
<a href="#">603/0481/9</a>	Certificate (240 GLH)	N/A	Yes	Yes

Got a question? [Check our FAQs](#)

# Technical Certificate List (Level 2)

## Business and Enterprise (page 2 of 2)

Your subject teams are here to help, so please do give them a ring on 020 7010 2182 or drop them a line at [TeachingBusiness@pearson.com](mailto:TeachingBusiness@pearson.com) if you have any questions.

Qualification Number (QN)	Size	Headline measures 2018	Headline measures 2019	Headline measures 2020
<b>Pearson BTEC Level 2 Technical in Retail Operations</b>				
<a href="#">603/0478/9</a>	Certificate (240 GLH)	N/A	Yes	Yes

Got a question? [Check our FAQs](#)

# Technical Certificate List (Level 2)

## Customer Service

Qualification Number (QN)	Size	Headline measures 2018	Headline measures 2019	Headline measures 2020
<b>Pearson BTEC Level 2 in Customer Service</b>				
<a href="#">601/3424/0</a>	Diploma (245-305 GLH)	Yes	N/A	N/A
<b>Pearson BTEC Level 2 Technical in Customer Service Operations</b>				
<a href="#">603/0759/6</a>	Certificate (240 GLH)	N/A	Yes	Yes

Got a question? [Check our FAQs](#)



# Technical Certificate List (Level 2)

## Marketing

Qualification Number (QN)	Size	Headline measures 2018	Headline measures 2019	Headline measures 2020
<b>Pearson BTEC Level 2 Technical in Marketing</b>				
<a href="#">603/1900/8</a>	Certificate (240 GLH)	N/A	No	Yes

Got a question? [Check our FAQs](#)

# Childcare

## Technical Certificate List in England

Post-16 Level 2

# Technical Certificate List (Level 2)

## Childcare

Your subject teams are here to help, so please do give them a ring on 020 7010 2162 or drop them a line at [TeachingChildcare@pearson.com](mailto:TeachingChildcare@pearson.com) if you have any questions.

Qualification Number (QN)	Size	Headline measures 2018	Headline measures 2019	Headline measures 2020
<b>Pearson BTEC Level 2 First in Children's Care, Learning and Development</b>				
<a href="#">100/6244/0</a>	Diploma (360 GLH)	Yes	N/A	N/A
<b>Pearson Edexcel Level 2 for the Children and Young People's Workforce</b>				
<a href="#">500/9940/1</a>	Certificate (270-277 GLH)	Yes	N/A	N/A
<b>Pearson BTEC Level 2 Technical in Children's Play, Learning and Development (Early Years Assistant)</b>				
<a href="#">603/0509/5</a>	Diploma (360 GLH)	N/A	No	Yes

Got a question? [Check our FAQs](#)

# Construction

## Technical Certificate List in England

### Post-16 Level 2

# Technical Certificate List (Level 2)

## Construction

Your subject teams are here to help, so please do give them a ring on 020 7010 2168 or drop them a line at [TeachingConstruction@Pearson.com](mailto:TeachingConstruction@Pearson.com) if you have any questions.

Qualification Number (QN)	Size	Headline measures 2018	Headline measures 2019	Headline measures 2020
<b>Pearson BTEC Level 1/Level 2 First in Construction and the Built Environment</b>				
<a href="#">601/0258/5</a>	Extended Certificate (360 GLH)	Yes	N/A	N/A
<a href="#">601/0259/7</a>	Diploma (480 GLH)	Yes	N/A	N/A
<b>Pearson BTEC Level 2 in Construction Occupations</b>				
<a href="#">600/3254/6</a>	Diploma (330-450 GLH)	Yes	N/A	N/A

Got a question? [Check our FAQs](#)

# **Creative Arts, Media and Music**

## **Technical Certificate List in England**

**Post-16 Level 2**

# Technical Certificate List (Level 2)

## Creative Arts, Media and Publishing

Your subject teams are here to help, so please do give them a ring on 020 7010 2181 or drop them a line at [TeachingMedia@pearson.com](mailto:TeachingMedia@pearson.com) if you have any questions.

Qualification Number (QN)	Size	Headline measures 2018	Headline measures 2019	Headline measures 2020
<b>Pearson BTEC Level 1 /Level 2 First in Creative Digital Media Production</b>				
<a href="#">601/0167/2</a>	Extended Certificate (360 GLH)	Yes	N/A	N/A
<a href="#">601/0166/0</a>	Diploma (480 GLH)	Yes	N/A	N/A
<b>Pearson BTEC Level 2 Technical in Design Production</b>				
<a href="#">603/0873/4</a>	Diploma (360 GLH)	N/A	Yes	Yes
<b>Pearson BTEC Level 2 Technical in Digital Media Production</b>				
<a href="#">603/0875/8</a>	Diploma (360 GLH)	N/A	Yes	Yes

Got a question? [Check our FAQs](#)

# Technical Certificate List (Level 2)

## Creative Arts, Media and Publishing

Your subject teams are here to help, so please do give them a ring on 020 7010 2181 or drop them a line at [TeachingMedia@pearson.com](mailto:TeachingMedia@pearson.com) if you have any questions.

Qualification Number (QN)	Size	Headline measures 2018	Headline measures 2019	Headline measures 2020
<b>Pearson BTEC Level 2 Technical Diploma in Digital Audio/Visual Production</b>				
<a href="#">603/0876/X</a>	Diploma (360 GLH)	N/A	Yes	Yes
<b>Pearson BTEC Level 2 Technical Diploma in Digital Games Production</b>				
<a href="#">603/0874/6</a>	Diploma (360 GLH)	N/A	Yes	Yes
<b>Pearson BTEC Level 2 Technical Diploma in Performance</b>				
<a href="#">603/1901/X</a>	Diploma (360 GLH)	N/A	No	No

Got a question? [Check our FAQs](#)



# Technical Certificate List (Level 2)

## Creative Arts, Media and Publishing

Your subject teams are here to help, so please do give them a ring on 020 7010 2176 or drop them a line at [TeachingMusic@pearson.com](mailto:TeachingMusic@pearson.com) if you have any questions.

Qualification Number (QN)	Size	Headline measures 2018	Headline measures 2019	Headline measures 2020
<b>Pearson BTEC Level 2 Technical Diploma in Music</b>				
<a href="#">603/2948/8</a>	Diploma (360 GLH)	N/A	N/A	Yes

Got a question? [Check our FAQs](#)

# Engineering

## Technical Certificate List in England

Post-16 Level 2

# Technical Certificate List (Level 2)

## Engineering

Your subject teams are here to help, so please do give them a ring on 020 7010 2170 or drop them a line at [TeachingEngineering@pearson.com](mailto:TeachingEngineering@pearson.com) if you have any questions.

Qualification Number (QN)	Size	Headline measures 2018	Headline measures 2019	Headline measures 2020
<b>Pearson BTEC Level 1/Level 2 First in Engineering</b>				
<a href="#">600/6630/1</a>	Extended Certificate (360 GLH)	Yes	N/A	N/A
<a href="#">601/0545/8</a>	Diploma (480 GLH)	Yes	N/A	N/A
<b>Pearson BTEC Level 2 Technical in Engineering</b>				
<a href="#">603/0421/2</a>	Diploma (360 GLH)	N/A	Yes	Yes

Got a question? [Check our FAQs](#)

# Health and Social Care

## Technical Certificate List in England

Post-16 Level 2

# Technical Certificate List (Level 2)

## Health and Social Care

Your subject teams are here to help, so please do give them a ring on 020 7010 2163 or drop them a line at [TeachingHealthandSocialCare@pearson.com](mailto:TeachingHealthandSocialCare@pearson.com) if you have any questions.

Qualification Number (QN)	Size	Headline measures 2018	Headline measures 2019	Headline measures 2020
<b>Pearson Edexcel Level 2 in Health and Social Care (Adults) for England</b>				
<a href="#">501/1699/X</a>	Diploma (319-396 GLH)	Yes	N/A	N/A
<b>Pearson BTEC Level 2 Technical in Adult Care</b>				
<a href="#">603/1193/9</a>	Certificate (240 GLH)	N/A	Yes	Yes

Got a question? [Check our FAQs](#)

# Hospitality and Catering

## Technical Certificate List in England

Post-16 Level 2

# Technical Certificate List (Level 2)

## Hospitality and Catering (page 1 of 2)

Your subject teams are here to help, so please do give them a ring on 020 7010 2179 or drop them a line at [TeachingHospitality@pearson.com](mailto:TeachingHospitality@pearson.com) if you have any questions.

Qualification Number (QN)	Size	Headline measures 2018	Headline measures 2019	Headline measures 2020
<b>Pearson BTEC Level 1/Level 2 First in Hospitality</b>				
<a href="#">601/0231/7</a>	Extended Certificate (360 GLH)	Yes	N/A	N/A
<a href="#">601/0230/5</a>	Diploma (480 GLH)	Yes	N/A	N/A
<b>Pearson BTEC Level 2 in Professional Cookery</b>				
<a href="#">601/6948/5</a>	Diploma (438 GLH)	Yes	N/A	N/A
<b>Pearson BTEC Level 2 in Professional Patisserie and Confectionery</b>				
<a href="#">601/6945/X</a>	Certificate (198 GLH)	Yes	N/A	N/A

Got a question? [Check our FAQs](#)

# Technical Certificate List (Level 2)

## Hospitality and Catering (page 2 of 2)

Your subject teams are here to help, so please do give them a ring on 020 7010 2179 or drop them a line at [TeachingHospitality@pearson.com](mailto:TeachingHospitality@pearson.com) if you have any questions.

Qualification Number (QN)	Size	Headline measures 2018	Headline measures 2019	Headline measures 2020
<b>Pearson BTEC Level 2 Technical in Patisserie and Confectionery</b>				
<a href="#">603/0383/9</a>	Certificate (240 GLH)	N/A	Yes	Yes
<b>Pearson BTEC Level 2 Technical in Food and Beverage Service</b>				
<a href="#">603/0384/0</a>	Diploma (360 GLH)	N/A	Yes	Yes
<b>Pearson BTEC Level 2 Technical in Professional Cookery</b>				
<a href="#">603/0382/7</a>	Extended Diploma (450 GLH)	N/A	Yes	Yes

Got a question? [Check our FAQs](#)



# Information Technology

## Technical Certificate List in England

Post-16 Level 2

# Technical Certificate List (Level 2)

## Information Technology

Your subject teams are here to help, so please do give them a ring on 020 7010 2161 or drop them a line at [TeachingICT@pearson.com](mailto:TeachingICT@pearson.com) if you have any questions.

Qualification Number (QN)	Size	Headline measures 2018	Headline measures 2019	Headline measures 2020
<b>Pearson BTEC Level 1/Level 2 First in Information and Creative Technology</b>				
<a href="#">600/6072/4</a>	Extended Certificate (360 GLH)	Yes	N/A	N/A
<a href="#">601/0169/6</a>	Diploma (480 GLH)	Yes	N/A	N/A
<b>Pearson BTEC Level 2 Technical in IT Support</b>				
<a href="#">603/0510/1</a>	Certificate (240 GLH)	N/A	Yes	Yes
<b>Pearson BTEC Level 2 Technical in Digital Technology</b>				
<a href="#">603/0878/3</a>	Diploma (360 GLH)	N/A	Yes	Yes

Got a question? [Check our FAQs](#)

**Land-based**

**Technical Certificate**  
**List in England**

**Post-16 Level 2**

# Technical Certificate List (Level 2)

## Land-based (page 1 of 4)

Your subject teams are here to help, so please do give them a ring on 020 7010 2173 or drop them a line at [TeachingLandBasedStudies@pearson.com](mailto:TeachingLandBasedStudies@pearson.com) if you have any questions.

Qualification Number (QN)	Size	Headline measures 2018	Headline measures 2019	Headline measures 2020
<b>Pearson BTEC Level 2 First in Agriculture</b>				
<a href="#">500/9932/2</a>	Extended Certificate (180 GLH)	Yes	N/A	N/A
<a href="#">500/9547/X</a>	Diploma (360 GLH)	Yes	N/A	N/A
<b>Pearson BTEC Level 2 First in Animal Care</b>				
<a href="#">500/8365/X</a>	Diploma (360 GLH)	Yes	N/A	N/A
<b>Pearson BTEC Level 2 First in Blacksmithing and Metalworking</b>				
<a href="#">600/0214/1</a>	Diploma (360 GLH)	Yes	N/A	N/A
<b>Pearson BTEC Level 2 First in Countryside and Environment</b>				
<a href="#">500/9930/9</a>	Diploma (360 GLH)	Yes	N/A	N/A
<b>Pearson BTEC Level 2 First in Fish Husbandry</b>				
<a href="#">500/8366/1</a>	Diploma (360 GLH)	Yes	N/A	N/A

# Technical Certificate List (Level 2)

## Land-based (page 2 of 4)

Your subject teams are here to help, so please do give them a ring on 020 7010 2173 or drop them a line at [TeachingLandBasedStudies@pearson.com](mailto:TeachingLandBasedStudies@pearson.com) if you have any questions.

Qualification Number (QN)	Size	Headline measures 2018	Headline measures 2019	Headline measures 2020
<b>Pearson BTEC Level 2 First in Floristry</b>				
<a href="#">501/0339/8</a>	Diploma (360 GLH)	Yes	N/A	N/A
<b>Pearson BTEC Level 2 First in Horse Care</b>				
<a href="#">500/9929/2</a>	Diploma (360 GLH)	Yes	N/A	N/A
<b>Pearson BTEC Level 2 First in Horticulture</b>				
<a href="#">500/9934/6</a>	Diploma (360 GLH)	Yes	N/A	N/A

Got a question? [Check our FAQs](#)

# Technical Certificate List (Level 2)

## Land-based (page 3 of 4)

Your subject teams are here to help, so please do give them a ring on 020 7010 2173 or drop them a line at [TeachingLandBasedStudies@pearson.com](mailto:TeachingLandBasedStudies@pearson.com) if you have any questions.

Qualification Number (QN)	Size	Headline measures 2018	Headline measures 2019	Headline measures 2020
<b>Pearson BTEC Level 2 First in Land-based Technology</b>				
<a href="#">501/0311/8</a>	Diploma (360 GLH)	Yes	N/A	N/A
<b>Pearson BTEC Level 2 Technical in Animal Care</b>				
<a href="#">603/0420/0</a>	Diploma (360 GLH)	N/A	Yes	Yes
<b>Pearson BTEC Level 2 Technical in Equine Studies</b>				
<a href="#">603/1211/7</a>	Diploma (360 GLH)	N/A	Yes	Yes

Got a question? [Check our FAQs](#)

# Technical Certificate List (Level 2)

## Land-based (page 4 of 4)

Your subject teams are here to help, so please do give them a ring on 020 7010 2173 or drop them a line at [TeachingLandBasedStudies@pearson.com](mailto:TeachingLandBasedStudies@pearson.com) if you have any questions.

Qualification Number (QN)	Size	Headline measures 2018	Headline measures 2019	Headline measures 2020
<b>Pearson BTEC Level 2 Technical in Agriculture</b>				
<a href="#">603/1907/0</a>	Diploma (360 GLH)	N/A	No	TBC
<b>Pearson BTEC Level 2 Technical in Blacksmithing</b>				
<a href="#">603/2657/8</a>	Diploma (360 GLH)	N/A	N/A	Yes
<b>Pearson BTEC Level 2 Technical in Floristry</b>				
<a href="#">603/2656/6</a>	Diploma (360 GLH)	N/A	N/A	Yes
<b>Pearson BTEC Level 2 Technical in Forestry and Arboriculture</b>				
<a href="#">603/2719/4</a>	Diploma (360 GLH)	N/A	N/A	Yes
<b>Pearson BTEC Level 2 Technical in Fish Husbandry</b>				
<a href="#">603/2289/5</a>	Certificate (240 GLH)	N/A	N/A	Yes
<b>Pearson BTEC Level 2 Technical in Countryside Studies</b>				
<a href="#">603/1906/9</a>	Diploma (360 GLH)	N/A	No	Yes
<b>Pearson BTEC Level 2 Technical in Horticulture</b>				
<a href="#">603/1908/2</a>	Diploma (360 GLH)	N/A	No	Yes



# Sport

## Technical Certificate List in England

Post-16 Level 2



# Technical Certificate List (Level 2)

## Sport

Your subject teams are here to help, so please do give them a ring on 020 7010 2188 or drop them a line at [TeachingPEandSport@pearson.com](mailto:TeachingPEandSport@pearson.com) if you have any questions.

Qualification Number (QN)	Size	Headline measures 2018	Headline measures 2019	Headline measures 2020
<b>Pearson BTEC Level 2 Technical for Sport and Activity Leaders</b>				
<a href="#">603/0479/0</a>	Diploma (360 GLH)	N/A	Yes	Yes

Got a question? [Check our FAQs](#)

# Travel and Tourism

## Technical Certificate List in England

Post-16 Level 2

# Technical Certificate List (Level 2)

## Travel and Tourism

Your subject teams are here to help, so please do give them a ring on 020 7010 2185 or drop them a line at [TeachingTravelandTourism@pearson.com](mailto:TeachingTravelandTourism@pearson.com) if you have any questions.

Qualification Number (QN)	Size	Headline measures 2018	Headline measures 2019	Headline measures 2020
<b>Pearson BTEC Level 1/Level 2 First in Travel and Tourism</b>				
<a href="#">601/0233/0</a>	Extended Certificate (360 GLH)	Yes	N/A	N/A
<a href="#">601/0234/2</a>	Diploma (480 GLH)	Yes	N/A	N/A
<b>Pearson BTEC Level 2 Technical Events Assistant</b>				
<a href="#">603/0827/8</a>	Certificate (240 GLH)	N/A	No	No

Got a question? [Check our FAQs](#)

# **Warehousing and Storage**

## **Technical Certificate List in England**

**Post-16 Level 2**

# Technical Certificate List (Level 2)

## Warehousing and Storage

Qualification Number (QN)	Size	Headline measures 2018	Headline measures 2019	Headline measures 2020
<b>Pearson BTEC Level 2 in Principles of Working in Warehousing and Storage (QCF)</b>				
<a href="#">601/6918/7</a>	Extended Certificate (165 GLH)	Yes	N/A	N/A
<b>Pearson BTEC Level 2 Technical for Warehouse Operatives</b>				
<a href="#">603/1194/0</a>	Certificate (240 GLH)	N/A	No	TBC

Got a question? [Check our FAQs](#)