

Please check the examination details below before entering your candidate information

Candidate surname

Other names

Centre Number

Candidate Number

--	--	--	--	--

--	--	--	--	--

## Pearson Edexcel International Award in Primary

**Tuesday 30 May 2023**

Morning (Time: 1 hour)

Paper  
reference

**JCP11/01**

**Computing**

**Year 6**

**Achievement Test**



**You do not need any other materials.**

Total Marks

### Instructions

- Use **black** ink or ball-point pen.
- **Fill in the boxes** at the top of this page with your name, centre number and candidate number.
- Answer **all** questions.
- Answer the questions in the spaces provided  
– *there may be more space than you need.*

### Information

- The total mark for this paper is 60.
- The marks for **each** question are shown in brackets  
– *use this as a guide as to how much time to spend on each question.*
- You must **NOT** use a calculator.

### Advice

- Read each question carefully before you start to answer it.
- Try to answer every question.
- Check your answers if you have time at the end.

Turn over ►

P72035A

©2023 Pearson Education Ltd.  
N:1/1/1/1/1



  
**Pearson**

## SECTION A

Answer ALL questions. Write your answers in the spaces provided.

Some questions must be answered with a cross in a box ☒. If you change your mind about an answer, put a line through the box ☒ and then mark your new answer with a cross ☒.

1 Which **one** of these measures the change in a slope?

- A Digital camera
- B Servo motor
- C Tilt sensor
- D Touch screen

(Total for Question 1 = 1 mark)

2 Circle **two** devices that are used for input.

Joystick

Light

Printer

Speaker

Webcam

(Total for Question 2 = 2 marks)

3 Which **one** of these software applications is best to keep track of spending?

- A Database
- B Graphics
- C Spreadsheet
- D Word processing

(Total for Question 3 = 1 mark)

4 State **one** type of social engineering attack.

(Total for Question 4 = 1 mark)

DO NOT WRITE IN THIS AREA

DO NOT WRITE IN THIS AREA

DO NOT WRITE IN THIS AREA



5 Which **one** of these protects the work of a photographer?

- A Bias
- B Copyright
- C Fitness for purpose
- D Health and safety

(Total for Question 5 = 1 mark)

6 Which **one** of these is a type of computer network?

- A Download
- B Forum
- C Stream
- D Wired

(Total for Question 6 = 1 mark)

7 Complete the table by adding a tick (✓) next to the description of the World Wide Web.

Description	Tick
Global network of networks	
Pages that can be accessed through the Internet	

(Total for Question 7 = 1 mark)

8 Samihah visits an online shopping site that sells books.

Describe how she would use the shopping site's product catalogue and basket.

.....

.....

.....

.....

(Total for Question 8 = 2 marks)



9 Which **one** of these tasks would you use a media player for?

- A To make telephone calls
- B To store bookmarks
- C To stream a movie
- D To take photographs

(Total for Question 9 = 1 mark)

10 One benefit of using a network in a school is that access to data can be controlled.

Give **one other** benefit of using a network in a school.

.....

.....

(Total for Question 10 = 1 mark)

11 Which **one** of these is used for an online discussion about computer games?

- A Bookmark
- B Forum
- C Presentation
- D Search engine

(Total for Question 11 = 1 mark)



12 Draw **one** straight line from **each** method of controlling access to its description.

Method	Description
PIN	A swipe card used to gain access to a building
Password	A short numerical code used to confirm the identity of a user
Biometrics	A physical characteristic used to uniquely identify a user
	A set of characters used to confirm the identity of a user

(Total for Question 12 = 3 marks)

13 Here is an extract from a website.

Panic grips the UK!!!!	31 January
It is going to rain for all 30 days in February	
<a href="https://sillyFacts.com">https://sillyFacts.com</a>	Author: anonymous

Circle **two** items that show the information on the website may be unreliable.

(Total for Question 13 = 2 marks)



14 Marcus uses a search engine to find information about plants with yellow flowers.

Explain why he should use the search term **“yellow flowers”** rather than **yellow flowers**.

.....

.....

.....

.....

(Total for Question 14 = 2 marks)

15 Complete the sentence by choosing **one** word from the box.

addition                      algorithm                      animation                      application

An ..... is a set of instructions to complete a task.

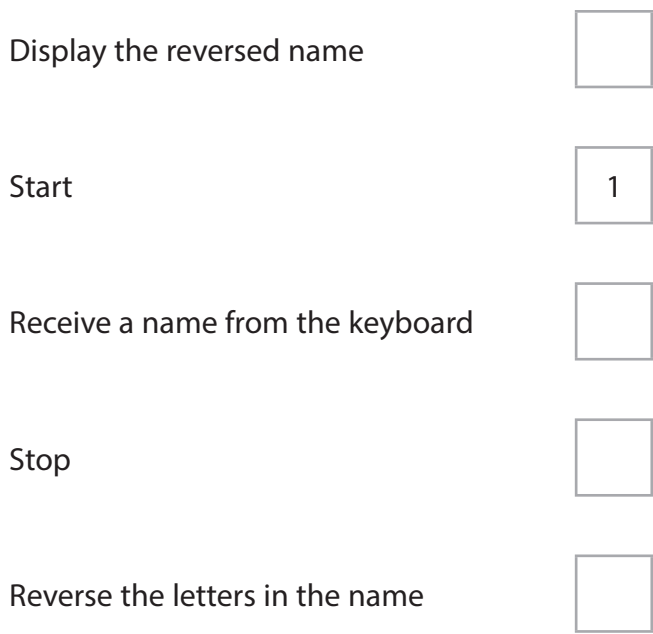
(Total for Question 15 = 1 mark)

16 Here are the five steps in an algorithm.

The steps are not in the correct order.

Complete the diagram by numbering the steps in the correct order.

The first step is done for you.



(Total for Question 16 = 3 marks)



17 Which **one** of these arithmetic operators is used to divide one number by another?

- A \*
- B /
- C +
- D -

(Total for Question 17 = 1 mark)

18 Which **one** of these describes a variable in a computer program?

- A A value that can change
- B A value that must be calculated
- C A value that can only be used once
- D A value that must come from the keyboard

(Total for Question 18 = 1 mark)

19 A program asks a user to input:

- the name of the month
- the number of days in the month
- the rainfall in millimetres.

Complete the table by giving the data type of each input.

	Input	Data type	
(a)	August		(1)
(b)	31		(1)
(c)	20.3		(1)

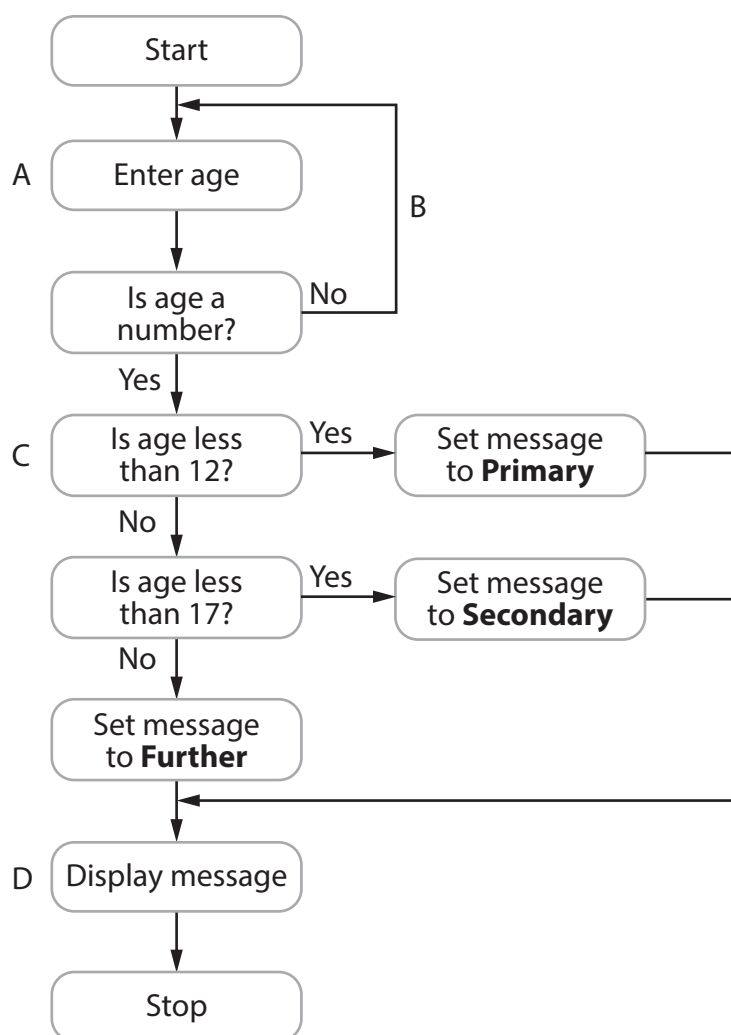
(Total for Question 19 = 3 marks)



20 Look at **Figure 1**.

It shows a flowchart.

Some of the flowchart boxes or links are labelled with letters.



**Figure 1**



(a) Complete the table by adding the name of the structural component represented by each letter. One has been completed for you.

(3)

Letter	Structural component
A	Input
B	
C	
D	

(b) Identify **two** variables used in the flowchart.

(2)

1 .....

2 .....

(c) State what will be displayed if the age entered is 17.

(1)

.....

**(Total for Question 20 = 6 marks)**

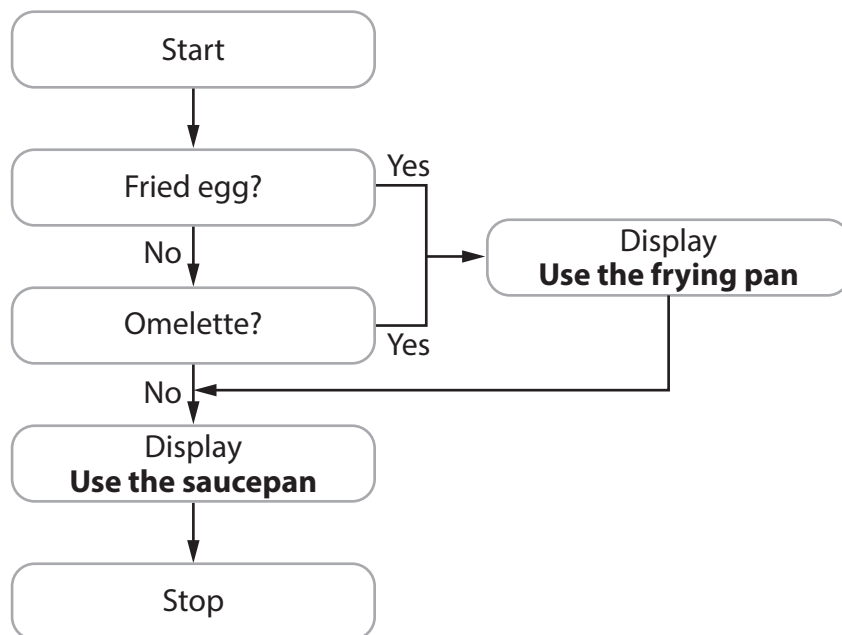
.....



21 Look at **Figure 2**.

It shows a flowchart that displays whether a saucepan or a frying pan is needed to cook an egg dish.

Eggs can be boiled, fried or made into an omelette.



**Figure 2**

Selecting **fried egg** should only display the message **Use the frying pan**.

There is an error in the flowchart.

It displays the message **Use the frying pan** and then the message **Use the saucepan**.

Explain why the output from the flowchart is incorrect.

.....

.....

.....

.....

**(Total for Question 21 = 2 marks)**



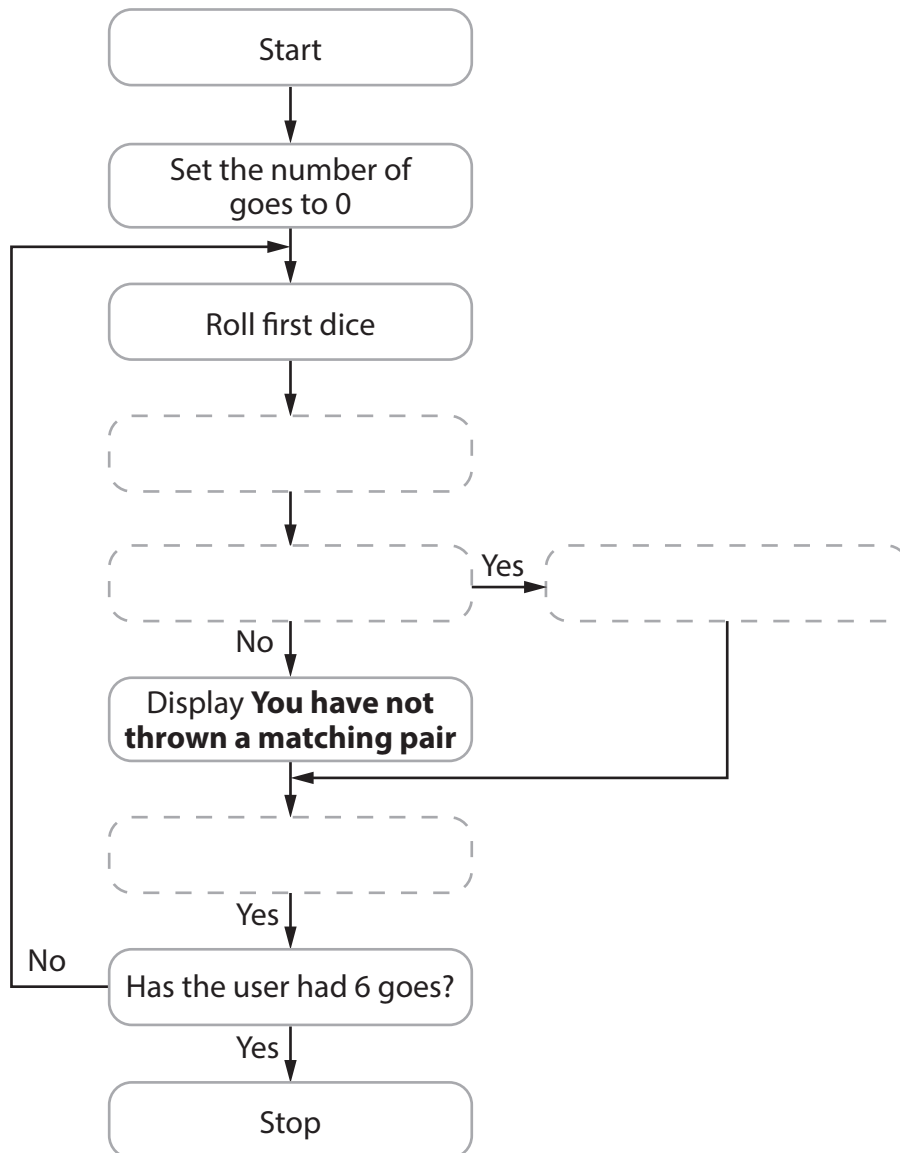
22 Here is a flowchart for a game.

The game allows a user to throw two dice and tells the user if the numbers match.  
The user has six goes.

Here are the missing steps for the flowchart. They are not in the correct order.

A	Add 1 to the number of goes
B	Display <b>You have thrown a matching pair</b>
C	Roll second dice
D	Are both numbers the same?

Create the flowchart by adding the letter of each step in the correct box.



(Total for Question 22 = 3 marks)

TOTAL FOR SECTION A = 40 MARKS



SECTION B

Answer ALL questions. Write your answers in the spaces provided.

Some questions must be answered with a cross in a box ☒. If you change your mind about an answer, put a line through the box ☒ and then mark your new answer with a cross ☒.

23 Look at Figure 3.

It shows the design for a slide in a presentation.

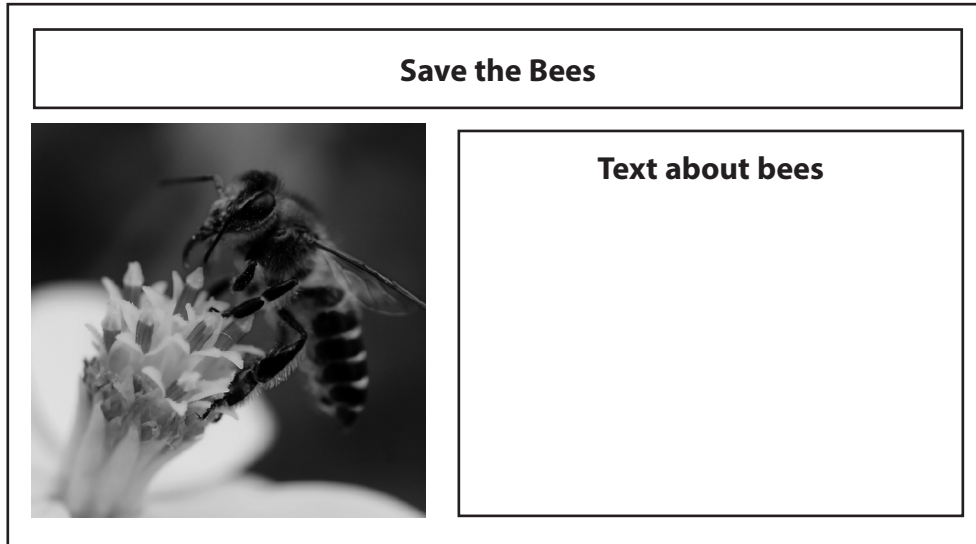


Figure 3

(a) Which **one** of these would be used to make the image bounce?

(1)

- A Alignment
- B Animation
- C Rotation
- D Transition

(b) The slide has a button.

Clicking the button loads the website [www.allaboutbees.com](http://www.allaboutbees.com)

Describe how you would edit the button to do this.

(2)

.....

.....

.....

.....

(Total for Question 23 = 3 marks)

DO NOT WRITE IN THIS AREA

DO NOT WRITE IN THIS AREA

DO NOT WRITE IN THIS AREA



**24** Look at **Figure 4**.

It shows part of a database.

Member ID	Joined	Last name	Telephone
1	19/01/2012	Hussain	07700 900000
2	21/07/2023	Meek	07700 900999
3	13/05/2022	Weidmann	07700 901234

**Figure 4**

- (a) The database has tables and records.

Explain the difference between a table and a record in a database.

(2)

.....

.....

.....

.....

- (b) State the data type of the **Joined** field.

(1)

.....

- (c) Complete the query to find members who joined before 1 January 2020.

(1)

Joined ..... 01/01/2020

**(Total for Question 24 = 4 marks)**



**25** Here is a list of software applications.

Graphics

Presentation

Spreadsheet

Word processing

Circle **one** software application used to add information from a database to a newsletter.

**(Total for Question 25 = 1 mark)**

**26** Complete the sentence by choosing **one** word from the box.

recycled                  replaced                  shredded                  stored

Digital devices should be ..... to help reduce e-waste.

**(Total for Question 26 = 1 mark)**



27 Here is part of a spreadsheet giving sales of ice cream.

	A	B	C	D	E
1	Ice cream flavour	Size in litres	Number sold	Selling price	Total
2	Strawberry	1	3	5.32	15.96
3	Raspberry	2	2	10.70	21.40
4	Chocolate	1	4	5.40	21.60
5	Total income				

- (a) Draw a circle around a cell on the spreadsheet. (1)
- (b) Which **one** of these formulae would be used in E3 to calculate the total for the **Raspberry** ice cream flavour? (1)
- A = C3 / D3
  - B = C3 - D3
  - C = C3 \* D3
  - D = C3 + D3
- (c) Give the name of the function that would be used in E5 to add up the values in E2 to E4. (1)

(Total for Question 27 = 3 marks)



28 Look at **Figure 5**.

It shows an image.



**Figure 5**

(a) The title **Boat Race** needs adding to the image.

Which **one** of these is used to add the title?

(1)

- A** Caption
- B** Crop
- C** Format
- D** Transition

(b) Which **one** of these is a sensible filename for the image?

(1)

- A** Anchors
- B** Boat\_race
- C** Cars
- D** Image5

**(Total for Question 28 = 2 marks)**

29 Which **one** of these determines if an application can open an image?

- A** Author's name
- B** Date created
- C** File format
- D** Folder structure

**(Total for Question 29 = 1 mark)**



**30** Look at **Figure 6**.

It shows part of a word-processed document.

The document uses formatting features.

		Monday	Tuesday	Wednesday	Thursday	Friday
Lesson	1	English Literature	Maths	Computing	Geography	History
	2	Maths	History	English Literature	Computing	Maths
	3	History	English Literature	Computing	German	Maths

Figure 6 shows a table with the following formatting features indicated by letters A, B, C, and D:

- A**: Points to the 'Friday' header cell, which is shaded.
- B**: Points to the 'Lesson' column header, which is vertically centered.
- C**: Points to the 'Maths' cell in the bottom-right corner.
- D**: Points to the 'English Literature' cell in the first row, which has a wavy border.

**Figure 6**

Complete the table by adding the letter that identifies where each formatting feature is used.

Formatting feature	Letter
Vertical centre alignment	
Cell border	
Horizontal centre alignment	
Shading	

**(Total for Question 30 = 4 marks)**

31 Which **one** of these features is used to make important information stand out in a document?

- A Alignment
- B Bookmark
- C Columns
- D Font size

(Total for Question 31 = 1 mark)

**TOTAL FOR SECTION B = 20 MARKS**  
**TOTAL FOR PAPER = 60 MARKS**

DO NOT WRITE IN THIS AREA

DO NOT WRITE IN THIS AREA

DO NOT WRITE IN THIS AREA



DO NOT WRITE IN THIS AREA

DO NOT WRITE IN THIS AREA

DO NOT WRITE IN THIS AREA

**BLANK PAGE**



P 7 2 0 3 5 A 0 1 9 2 0

DO NOT WRITE IN THIS AREA

DO NOT WRITE IN THIS AREA

DO NOT WRITE IN THIS AREA

**BLANK PAGE**

