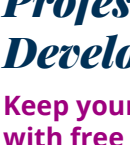


Pearson Edexcel iPrimary and iLowerSecondary Professional Development Guide

What is iPrimary and iLowerSecondary?



An international curriculum.

Draw your students in with an internationally-focused curriculum and ensure knowledge sticks with accessible and culturally-relevant examples and resources.

- Based on the latest English National Curriculum (2014), with an international approach.
- Written with learners of English as an additional language (EAL) in mind.



Full Schemes of Work and Lesson Plans.

Cut your planning time and guide your students through the curriculum with our ready-made Schemes of Work.

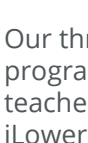
- Full Schemes of Work provided for all three subjects for all nine years with every unit of content exemplified.
- Optional links to internationally-regarded Pearson resources such as Bug Club and Abacus.
- Structure if you need it, flexibility if you don't.



Comprehensive teacher support.

Easily work out exactly what to teach and when with our detailed Teacher's Guides.

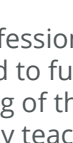
- Subject-specific Teacher's Guides at each level provide support for specialist and non-specialist teachers.
- Guides also cover teaching techniques, pedagogy and classroom management.
- Online forum for FAQs and support from the iPrimary and iLowerSecondary community.



Professional Development.

Keep your skills sharp with free face-to-face teacher training and online PD support.

- Teacher Professional Development included in the programme package.
- Face-to-face training delivered locally.
- Ongoing Professional Development provided via webinars and support for school co-ordinators.



Foundation for future success.

Steer students towards success at international GCSE with a curriculum that builds on their learning at every stage.

- Designed specifically to prepare students for International GCSEs and beyond.
- Transferable skills and enquiry-based learning embedded in the curriculum.
- Progress and Achievement Tests build towards International GCSE style examinations.



Internal and external assessment.

Measure your students' learning with built-in Progress and Achievement Tests.

- Progress Tests for every unit to check student progress.
- End-of-year Progress Tests - freshly updated every year.
- Edexcel Achievement Tests for international benchmarking.
- Comprehensive analysis through ResultsPlus service.

* Teachers are not restricted from choosing other modules if this fits their needs.

Find out more at
qualifications.pearson.com/iprimary
qualifications.pearson.com/ilowersecondary

iPLS Implementation Training

Our three day face-to-face professional development programme has been designed to fully equip teachers with an understanding of the components of iLowerSecondary, as well as key teaching and learning strategies to help them implement the curriculum effectively and confidently in their classrooms.

Our professional development programme is divided into modular sessions that provide three different areas of support:

MODULE 1 - iLowerSecondary Orientation

These sessions provide information and hands-on practice using different elements of the programme. They include an exploration of iPLS assessments and orientation to two online learning platforms, ActiveLearn Primary (ALP) and ActiveLearn Digital Service (ALDS).

MODULE 2 - Model Lessons

On each of the three days, teachers will participate in sample lessons taken directly from the new curriculum. Each day will highlight a different subject area and teachers will have opportunities to discuss and analyse the lessons together with their facilitator.

MODULE 3 - Teaching and Learning Strategies

Teachers will also engage with key teaching and learning strategies for the following:

- > **Active Learning:** strategies that focus on student-centred activities that allow students to construct knowledge and meaning
- > **Formative Assessment:** strategies for assessing where students are in their learning and using the results to adjust instruction
- > **Critical Thinking:** strategies for promoting students' critical thinking skills, such as evaluating, comparing and questioning.

Teachers will learn and practise a variety of strategies that they will be able to apply directly to their classrooms. Additional teaching and learning strategies will be offered in future to further build classroom skills.

* Teachers are not restricted from choosing other modules if this fits their needs.

COURSE TITLE
iPrimary and iLowerSecondary Professional Development

QUALIFICATION AND SUBJECTS
Covers all iPrimary and/or iLowerSecondary for all subjects (English, Maths, Science and Computing)

FORMAT AND DURATION
Face to face training over 3 full days

COST
FREE to all new iPrimary and/or iLowerSecondary customers. Repeat sessions are chargeable

DELEGATE PROFILE
Teachers and year/department leaders who are new to teaching iPrimary and/or iLowerSecondary

NUMBER OF SPACES
15-35

CERTIFICATION
Teachers who attend all 3 days get a certificate of attendance. Senior members of staff can also join our iPLS coordinator programme and do the optional extension task to gain an iPLS digital badge and certificate.

Further iPLS Professional Development Modules

The following modules are available for teachers to undertake in the following year or two after their first wave of professional development training (Implementation Training) as shown above.

Effective Communication	Introduction to SEN	Enquiry-Based Science
Classroom Management	Raising Attainment of Writing	Computing
Bar Modelling	iPLS in Practice	Presentation Skills
Maths Mastery	English Reading Comprehension	Classroom Management (Digital Module)
Early Years	Problem Solving	

* Teachers are not restricted from choosing other modules if this fits their needs.

Recommended Route of iPLS Professional Development

In each subsequent year of your iPLS Professional Development Journey teachers can choose up to 4 modules year. This is a recommended route of Professional Development for teachers to take, based on feedback from schools who have undertaken these modules previously.*

SUBSCRIPTION

YEAR 2

iPLS Introduction to Maths Mastery

This module focuses on why teaching for mastery so is much more than students focusing on getting the right answer, in developing successful mathematicians there needs to be a development of a growth mindset, conceptual understanding and the development of Maths Talk in teaching and learning. By the end of the session participants will understand the key concepts of teaching for mastery, growth mindset, conceptual understanding, and be able to strengthen their students learning in Maths.

3 hours*

iPLS Classroom Management

Facilitated or Digital delivery

This module aims to equip teachers in encouraging iPLS 'learning behaviours' and to manage classes in a way that supports the iPLS curriculum goals. By the end of the session, participants will be able to; reflect on their current approach to classroom management and apply new practices as needed, implement strategies for an iPLS classroom environment, implement proactive strategies that promote iPLS learning behaviours and address inappropriate behaviour.

3 hours*

iPLS Introduction to Special Educational Needs (SEN)

This module aims to equip participants with an understanding of key concepts of working with students who have Special Educational Needs (SEN). By the end of the session participants will be able to; identify and understand key characteristics of students with SEN, consider teaching styles that are more effective with SEN students and analyse how the iPLS Active Learning Strategies can be appropriate for SEN students.

3 hours*

iPLS Enquiry-Based Science

This module provides guidance on how to deliver scientific enquiry effectively in an iPLS classroom. By the end of the session participants will, be able to define and describe scientific enquiry, consider and understand examples of scientific enquiry, compare and contrast enquiry with passive learning and understand some of the terminology related to computing, understand what offline computing is and understand a range of examples in order to develop their students' digital literacy skills.

2 hours*

SUBSCRIPTION

YEAR 3

iPLS Bar Modelling

This module aims to equip participants will the necessary skills to teach bar modelling effectively. By the end of the session participants will be able to understand what bar modelling is, experience different types of bar modelling and be able to use these in class to solve problems.

Please note this module is available once teachers have undertaken the iPLS Introduction to Maths Mastery module.

3 hours*

iPLS Effective Communication

This module provides participants with key ideas and strategies to implement successful effective communication in a classroom. By the end of the session teachers will have an understanding of the various elements of classroom communication, why this is important and will have learnt strategies for successful implementation of effective communication in their classrooms.

1hr 30mins*

iPLS Computing

This module is structured around the iPLS Computing Curriculum and the three broad strands that the curriculum can be broken down into; Computer Science, Information Technology and Digital Literacy. By the end of the session participants will; be able to describe computing and computational thinking, consider and understand some of the terminology related to computing, understand what offline computing is and understand a range of examples in order to develop their students' digital literacy skills.

3 hours*

iPLS English Reading Comprehension

This module looks at a range of strategies and explores ways of developing the classroom skills students need to be able to comprehend what they read. By the end of the session participants will; investigate the problems students have with reading comprehension, understand the value of reading for pleasure, be able to apply active learning strategies in developing reading comprehension.

3 hours*

SUBSCRIPTION

YEAR 4

iPLS Problem-Solving

This module focuses on providing guidance to teachers to ensure they have the skills to develop their student's problem-solving skills. To develop successful mathematicians' teachers will need to develop their student's ability to reason mathematically by understanding the importance of developing reasoning in all maths and how problem-solving can be developed by teaching strategies.

Please note this module is available once teachers have undertaken the iPLS Introduction to Maths Mastery module.

3 hours*

iPLS Presentation Skills

This module has been developed to guide delegates to identify times when they might need to give presentations and allows them to identify the skills they need to improve. By the end of the session, participants will; identify their personal strengths and weaknesses when presenting, experiment with techniques to improve their skills and deliver a short presentation to practice those skills.

3 hours*

iPLS Raising Attainment in Writing

This module looks at the marked students need to achieve the best grade possible in the Year 6 and Year 9 externally marked Achievement tests. By the end of the session participants will understand the expectations for writing in the Year 6 and Year 9 Achievement Tests, understand how writing is marked externally and model and discuss strategies to support writing skills.

3 hours*

iPLS Early Years

This module is structured around the iPrimary Early Years Curriculum and will develop teachers understanding of the broader pedagogy and ethos behind the iPrimary curricula. By the end of the session, participants will; understand the key pedagogies and ethos which support iPrimary Early Years, investigate relevant content and discuss classroom organisation and best practice in the early years environment.

3 hours*

Classroom Management Digital Module

This module aims to equip teachers in encouraging iPLS 'learning behaviours' and to manage classes in a way that supports the iPLS curriculum goals. Teachers can access this digital module and have the flexibility to work through content either in school or during their own time.

3-4 hours*

Teachers will need to have undertaken their first-year implementation training in order to access this module in their subsequent years of their iPLS Subscription. For more information on how to access this module please do contact your local Pearson Representative.

* Teachers are not restricted from choosing other modules if this fits their needs.

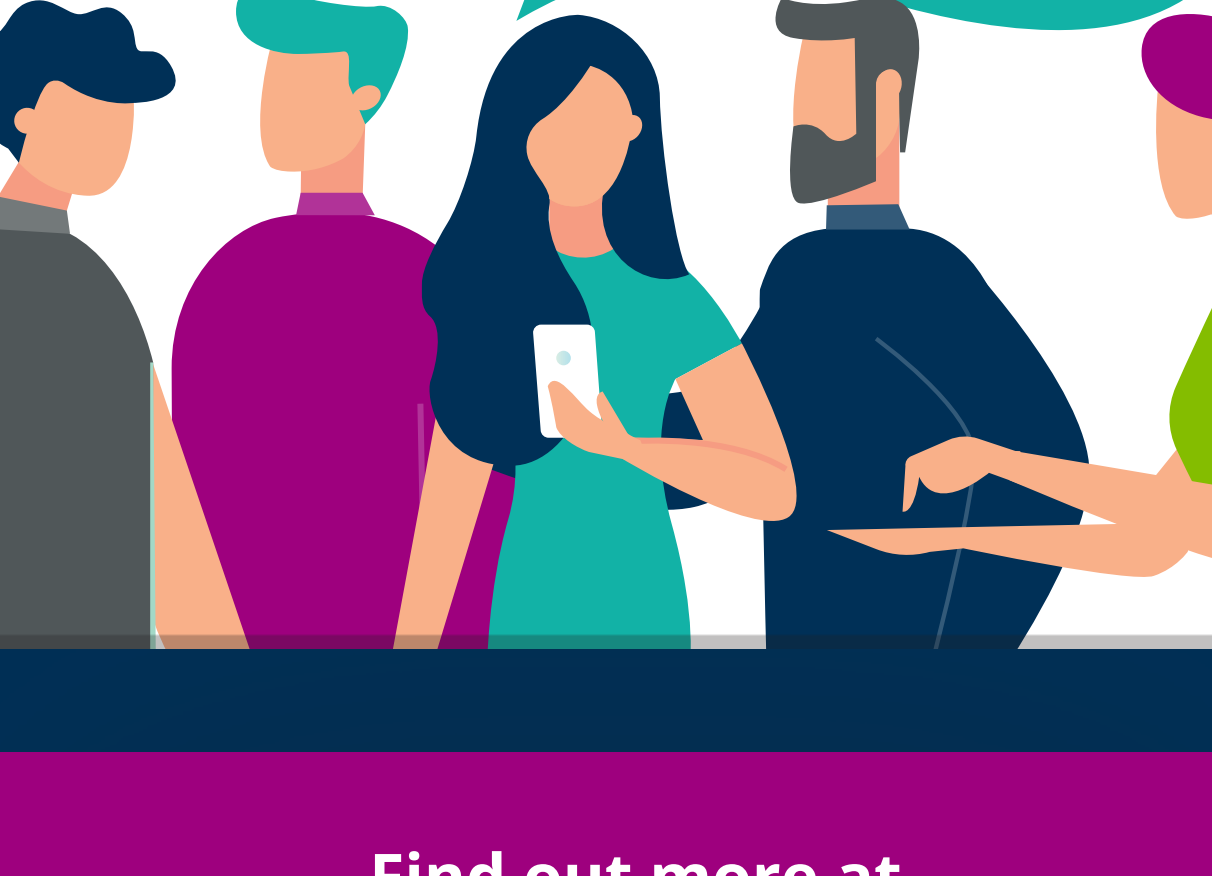
Approximate running time.

Teacher Testimonials – all from anonymous teachers

“Connecting and bonding with other team members was extremely beneficial for me, reminders and examples of best practice were discussed between colleagues... I am very inspired now!”

“I benefited from the course because I have learned that I have to be a role model as a teacher.”

“Helps me to think more about my students' needs and be more thoughtful about how to improve the effectiveness of my teaching to achieve the learning objectives.”



Find out more at
qualifications.pearson.com/iprimary
qualifications.pearson.com/ilowersecondary

Or email us at
internationalinsidesales@pearson.com

or contact your local Pearson representative for more information.