

# Edexcel Introduces a new International GCSE in Hindi

Edexcel has responded to requests from teachers by introducing a new International GCSE for Hindi.

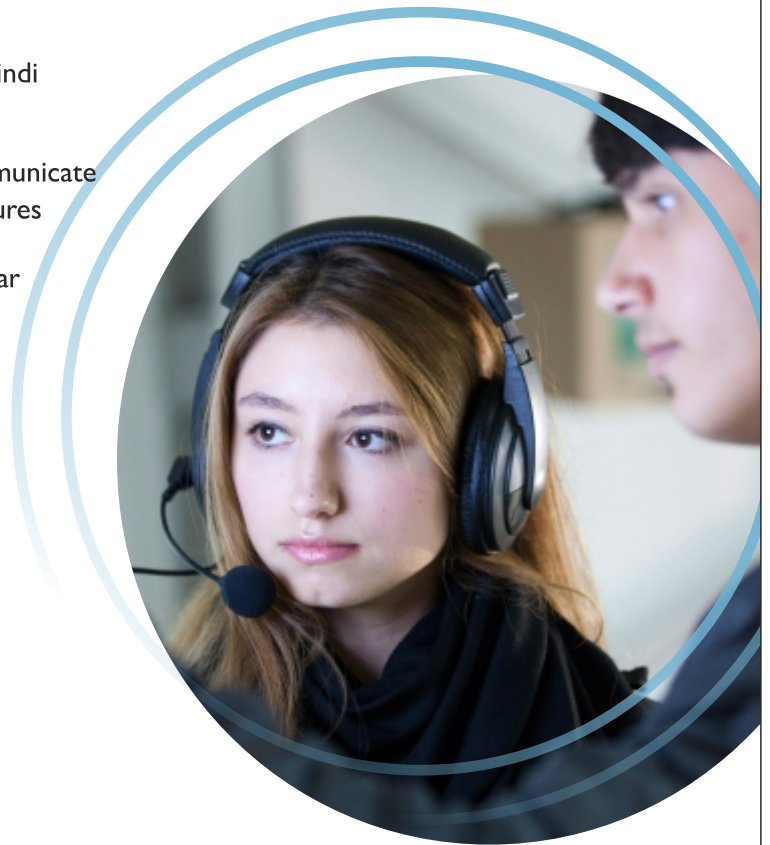
The International GCSE in Hindi will enable students to understand the written forms of Hindi within defined contexts. Vocabulary, structures and an understanding of grammar will help them to develop their writing skills, enabling them to communicate effectively. The qualification is appropriate for delivery in schools and colleges and is assessed via a single examination paper, graded A\* to G.

The International GCSE in Hindi will be available for first teaching from March 2012 and will be examined for the first time during the May/June 2013 examination series. A copy of the specification, a sample examination paper and mark scheme and a Grammar List will be placed on the Edexcel web site as soon as they are available.



# Key subject aims

- ✓ To enable students to understand the written forms of Hindi within defined contexts
- ✓ To develop students' writing skills, enabling them to communicate effectively in Hindi using a range of vocabulary and structures
- ✓ To develop a knowledge and understanding of the grammar of Hindi and its practical application
- ✓ To develop translation skills from English into Hindi and from Hindi into English
- ✓ To develop positive attitudes to language learning
- ✓ To provide a suitable foundation for further study of Hindi



## Assessment

Single exam

Grading A\* to G

## Training and Support

Edexcel will be organising Training Sessions for teachers wishing to teach the subject. Further information is available from regional offices.

## How can I obtain more information?

Further information is available from Edexcel International Regional office near you

### Regional Offices

#### Europe

Edexcel Europe Office  
One90 High Holborn  
London, WC1V 7BH

Tel: +44 (0)20 7190 4196

Fax: +44 20 7190 5638

[europa@edexcel.com](mailto:europa@edexcel.com)

#### Latin America

[latinamerica@edexcel.com](mailto:latinamerica@edexcel.com)

#### Middle East and North Africa

Edexcel International  
PO Box 500677  
Office 306, Arjaan Tower I,  
Media City Dubai,  
United Arab Emirates

Tel: +971 (0)4 437 0778

Fax: +971 (0)4 366 4055

[mea@edexcel.com](mailto:mea@edexcel.com)

#### North Asia

Edexcel International  
Suite 1208, Tower D,  
Beijing Global Trade Center  
36 North Third Ring Road East,  
Dongcheng District  
Beijing, China, 100013

Fax: 0086 (0)10-58257951

[china@edexcel.com](mailto:china@edexcel.com)

#### South Asia

Edexcel International  
Asia Pacic and ASEAN  
23 First Lok Yang Road, Jurong,  
Singapore 629733

Tel: +91 (0) 120 4190123

Fax: +603 2710 5713

[edexcel.asia@edexcel.org.my](mailto:edexcel.asia@edexcel.org.my)

#### Southern Africa

Edexcel International  
Cnr. Logan Way and Forest Drive,  
Pinelands 7405, Cape Town

Tel: +27 21 5326000

Fax: +27 21 5327043

[info@edexcel.org.za](mailto:info@edexcel.org.za)

#### Indian Subcontinent

Edexcel International  
7th Floor, Knowledge Boulevard  
A – 8(A), Sector – 62  
Noida 201309 UP, India

Tel: +91 (0) 120 419 0100

Fax: +91 (0) 120 419 0350

[subcontinent@edexcel.com](mailto:subcontinent@edexcel.com)

#### Bangladesh

S.S. Steel Building Level 5,  
Suite 502, 17/C Panthapath  
(near Russell Square) Bangladesh

Tel: +8802 8142546

Fax: +8802 8142546

[subcontinent@edexcel.com](mailto:subcontinent@edexcel.com)

#### Pakistan

Suite 427, Executive 4th Floor  
Sadiq Plaza, The Mall  
Lahore, Pakistan

Mob: +92 (0)323- 5011112

[subcontinent@edexcel.com](mailto:subcontinent@edexcel.com)

#### Sri Lanka

# 05-06, East Tower  
World Trade Centre, Echelon  
Square Colombo 01, Sri Lanka

Tel: +94 11 2391102

Fax: +94 11 2391103

[subcontinent@edexcel.com](mailto:subcontinent@edexcel.com)

### Contact us

For general queries, please call our customer service team on +44 (0) 1204 770696 (lines are open between 8am and 6pm from Monday to Friday GMT), or ask a question via our online support service, Ask Edexcel, at [www.edexcel.com/ask](http://www.edexcel.com/ask)

For subject-specific queries, please contact our Subject Advisor Service. Find out more at [www.edexcel.com/subjectadvisors](http://www.edexcel.com/subjectadvisors)

Edexcel, 190 High Holborn,  
London  
WC1V 7BH

Tel: 0844 576 0027

Fax: 020 7190 5700

[www.edexcel.com](http://www.edexcel.com)