

Write your name here

Surname

Other names

Pearson Edexcel
International GCSE

Centre Number

--	--	--	--	--	--

Candidate Number

--	--	--	--	--	--

Further Pure Mathematics

Paper 1

Friday 22 January 2016 – Morning
Time: 2 hours

Paper Reference

4PM0/01

Calculators may be used.

Total Marks

Instructions

- Use **black** ink or ball-point pen.
- **Fill in the boxes** at the top of this page with your name, centre number and candidate number.
- Answer **all** questions.
- Without sufficient working, correct answers may be awarded no marks.
- Answer the questions in the spaces provided
– *there may be more space than you need.*

Information

- The total mark for this paper is 100.
- The marks for **each** question are shown in brackets
– *use this as a guide as to how much time to spend on each question.*

Advice

- Read each question carefully before you start to answer it.
- Check your answers if you have time at the end.

Turn over ►

P46242A

©2016 Pearson Education Ltd.

5/1/1/1/1



PEARSON

Question 1 continued

DO NOT WRITE IN THIS AREA

DO NOT WRITE IN THIS AREA

DO NOT WRITE IN THIS AREA

Handwriting practice area with 28 horizontal dotted lines.

(Total for Question 1 is 7 marks)



2 Find the set of values of x for which $(2x - 3)^2 > 7x - 3$

(5)

DO NOT WRITE IN THIS AREA

DO NOT WRITE IN THIS AREA

DO NOT WRITE IN THIS AREA



Question 2 continued

DO NOT WRITE IN THIS AREA

DO NOT WRITE IN THIS AREA

DO NOT WRITE IN THIS AREA

Handwriting practice area with 25 horizontal dotted lines.

(Total for Question 2 is 5 marks)



3 The volume, $V \text{ cm}^3$, of a sphere of radius $r \text{ cm}$ is increasing at the rate of $60 \text{ cm}^3/\text{s}$.

Find the rate of increase of the radius, in cm/s correct to 2 significant figures, when the volume is $36000\pi \text{ cm}^3$.

(7)

DO NOT WRITE IN THIS AREA

DO NOT WRITE IN THIS AREA

DO NOT WRITE IN THIS AREA



Question 3 continued

DO NOT WRITE IN THIS AREA

DO NOT WRITE IN THIS AREA

DO NOT WRITE IN THIS AREA

Area with horizontal dotted lines for writing.

(Total for Question 3 is 7 marks)



Question 4 continued

DO NOT WRITE IN THIS AREA

DO NOT WRITE IN THIS AREA

DO NOT WRITE IN THIS AREA

Handwriting practice area consisting of 25 horizontal dotted lines.

(Total for Question 4 is 5 marks)



Question 5 continued

DO NOT WRITE IN THIS AREA

DO NOT WRITE IN THIS AREA

DO NOT WRITE IN THIS AREA

A large rectangular area with rounded corners, containing numerous horizontal dotted lines for writing.



P 4 6 2 4 2 A 0 1 1 3 6

Question 5 continued

Handwriting practice area with 25 horizontal dotted lines.

DO NOT WRITE IN THIS AREA

DO NOT WRITE IN THIS AREA

DO NOT WRITE IN THIS AREA



Question 5 continued

DO NOT WRITE IN THIS AREA

DO NOT WRITE IN THIS AREA

DO NOT WRITE IN THIS AREA

Area with horizontal dotted lines for writing.

(Total for Question 5 is 9 marks)



P 4 6 2 4 2 A 0 1 3 3 6

6 Giving your solutions to 3 decimal places, solve the equation

(a) $\cos x = 0.4$ $-\pi < x < \pi$ (2)

(b) $\tan\left(2\theta + \frac{\pi}{4}\right) = 1.5$ $0 < \theta < \pi$ (4)

DO NOT WRITE IN THIS AREA

DO NOT WRITE IN THIS AREA

DO NOT WRITE IN THIS AREA



Question 6 continued

DO NOT WRITE IN THIS AREA

DO NOT WRITE IN THIS AREA

DO NOT WRITE IN THIS AREA

Area with horizontal dotted lines for writing.

(Total for Question 6 is 6 marks)



P 4 6 2 4 2 A 0 1 5 3 6

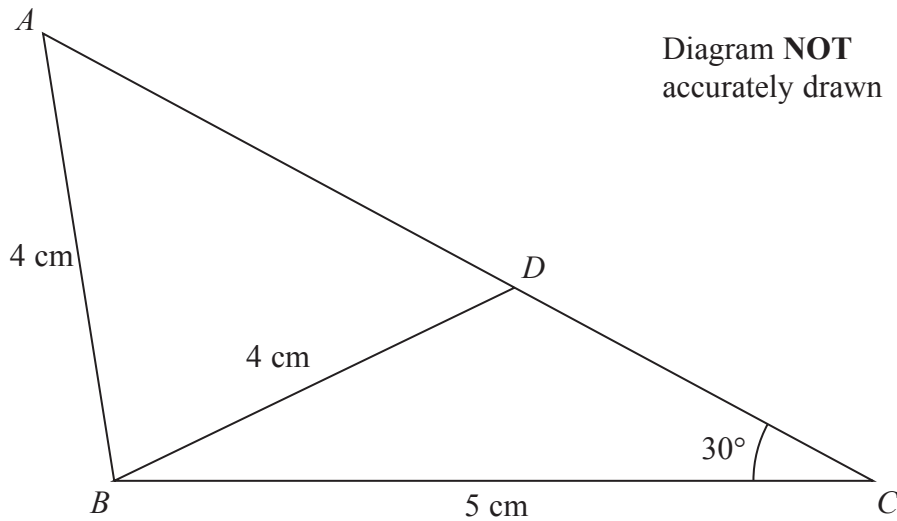


Figure 1

Figure 1 shows the triangle ABC with $AB = 4\text{ cm}$, $BC = 5\text{ cm}$ and angle $BCA = 30^\circ$

The point D lies on AC such that $BD = 4\text{ cm}$ and angle BDC is obtuse.

Find

- (a) the size of angle BDC , giving your answer in degrees correct to 1 decimal place, (3)
- (b) the length, in cm, of AD , giving your answer correct to 3 significant figures, (3)
- (c) the area, in cm^2 , of triangle ABD , giving your answer correct to 3 significant figures. (2)



Question 7 continued

DO NOT WRITE IN THIS AREA

DO NOT WRITE IN THIS AREA

DO NOT WRITE IN THIS AREA

Handwriting practice area with 25 horizontal dotted lines.



P 4 6 2 4 2 A 0 1 7 3 6

Question 7 continued

Handwriting practice area consisting of 25 horizontal dotted lines.

DO NOT WRITE IN THIS AREA

DO NOT WRITE IN THIS AREA

DO NOT WRITE IN THIS AREA



Question 7 continued

DO NOT WRITE IN THIS AREA

DO NOT WRITE IN THIS AREA

DO NOT WRITE IN THIS AREA

Area with horizontal dotted lines for writing.

(Total for Question 7 is 8 marks)



P 4 6 2 4 2 A 0 1 9 3 6

Question 8 continued

DO NOT WRITE IN THIS AREA

DO NOT WRITE IN THIS AREA

DO NOT WRITE IN THIS AREA

Handwriting practice area with 25 horizontal dotted lines.



P 4 6 2 4 2 A 0 2 1 3 6

Question 8 continued

Handwriting practice area with 25 horizontal dotted lines.

DO NOT WRITE IN THIS AREA

DO NOT WRITE IN THIS AREA

DO NOT WRITE IN THIS AREA



Question 8 continued

DO NOT WRITE IN THIS AREA

DO NOT WRITE IN THIS AREA

DO NOT WRITE IN THIS AREA

Area with horizontal dotted lines for writing.

(Total for Question 8 is 11 marks)



P 4 6 2 4 2 A 0 2 3 3 6

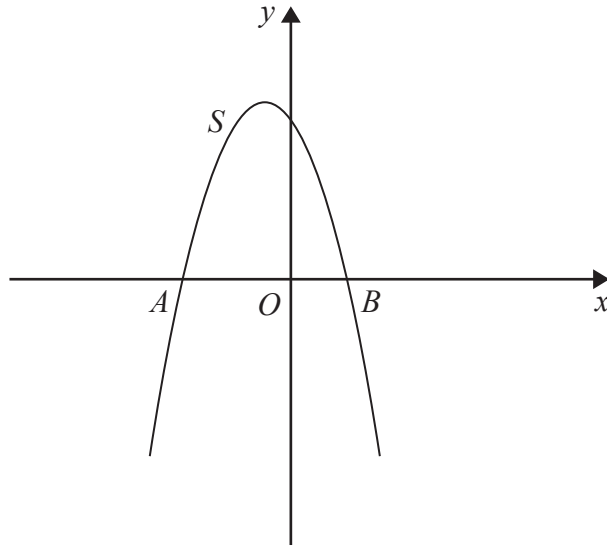


Figure 2

Figure 2 shows the curve S with equation $y = 8 - 2x - x^2$

The curve S crosses the x -axis at the points A and B .

(a) Find the x coordinate of A and the x coordinate of B . (3)

(b) Use calculus to find the area of the finite region bounded by S and the x -axis. (4)

The curve T with equation $y = x^2 + x + 6$ intersects S .

(c) Find the x coordinates of the points of intersection of S and T . (2)

(d) Use calculus to find the area of the finite region bounded by S and T . (4)

.....

.....

.....

.....

.....

.....

.....

.....

.....

.....



DO NOT WRITE IN THIS AREA

DO NOT WRITE IN THIS AREA

DO NOT WRITE IN THIS AREA

Question 9 continued

DO NOT WRITE IN THIS AREA

DO NOT WRITE IN THIS AREA

DO NOT WRITE IN THIS AREA

Handwriting practice area with 25 horizontal dotted lines.



P 4 6 2 4 2 A 0 2 5 3 6

Question 9 continued

Handwriting practice area with 25 horizontal dotted lines.

DO NOT WRITE IN THIS AREA

DO NOT WRITE IN THIS AREA

DO NOT WRITE IN THIS AREA



Question 9 continued

DO NOT WRITE IN THIS AREA

DO NOT WRITE IN THIS AREA

DO NOT WRITE IN THIS AREA

Area with horizontal dotted lines for writing.

(Total for Question 9 is 13 marks)



P 4 6 2 4 2 A 0 2 7 3 6

Question 10 continued

DO NOT WRITE IN THIS AREA

DO NOT WRITE IN THIS AREA

DO NOT WRITE IN THIS AREA

Area with horizontal dotted lines for writing.



P 4 6 2 4 2 A 0 2 9 3 6

Question 10 continued

Handwriting practice area with 25 horizontal dotted lines.

DO NOT WRITE IN THIS AREA

DO NOT WRITE IN THIS AREA

DO NOT WRITE IN THIS AREA



Question 10 continued

DO NOT WRITE IN THIS AREA

DO NOT WRITE IN THIS AREA

DO NOT WRITE IN THIS AREA

Handwriting practice area consisting of 25 horizontal dotted lines.

(Total for Question 10 is 11 marks)



P 4 6 2 4 2 A 0 3 1 3 6

Question 11 continued

DO NOT WRITE IN THIS AREA

DO NOT WRITE IN THIS AREA

DO NOT WRITE IN THIS AREA

Area with horizontal dotted lines for writing.



P 4 6 2 4 2 A 0 3 3 3 6

Question 11 continued

Handwriting practice area consisting of 25 horizontal dotted lines.

DO NOT WRITE IN THIS AREA

DO NOT WRITE IN THIS AREA

DO NOT WRITE IN THIS AREA



Question 11 continued

DO NOT WRITE IN THIS AREA

DO NOT WRITE IN THIS AREA

DO NOT WRITE IN THIS AREA

Handwriting practice area with 25 horizontal dotted lines.



P 4 6 2 4 2 A 0 3 5 3 6

Question 11 continued

Area with horizontal dotted lines for writing.

(Total for Question 11 is 18 marks)

TOTAL FOR PAPER IS 100 MARKS

DO NOT WRITE IN THIS AREA

DO NOT WRITE IN THIS AREA

DO NOT WRITE IN THIS AREA

