



**Answer ALL the questions. Write your answers in the spaces provided.**

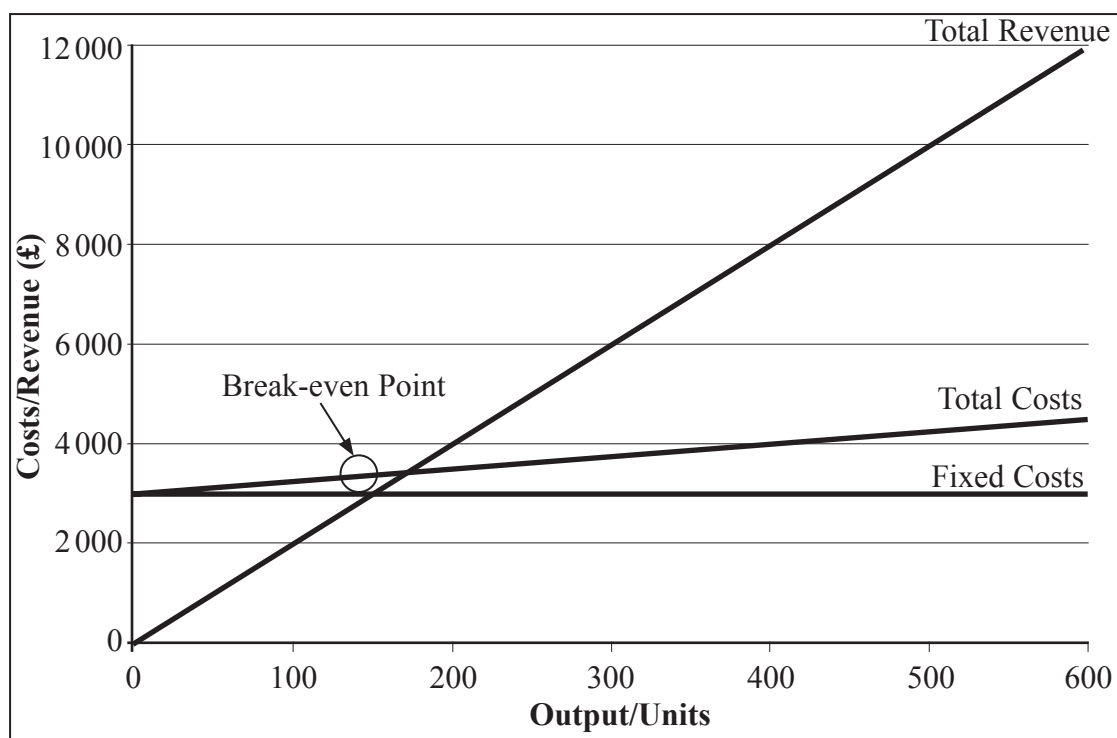
1. Economies of scale can be either internal or external.

(a) In the table below, indicate with a cross in a box (☒) whether the economy of scale is internal or external. If you change your mind about an answer, put a line through the box (☒) and then indicate your new answer with a cross (☒).

Economy of scale	Internal	External
Trading	☒	☒
Location	☒	☒
Skilled labour availability	☒	☒
Financial	☒	☒
Managerial	☒	☒

(5)

Having drawn the break-even chart below, Balbao thinks that the selling price of £20 is higher than it needs to be and that it should be decreased.





Leave blank

All limited companies have to produce an annual Trading and Profit and Loss Account.

(d) Discuss how a Trading and Profit and Loss Account could be used to assess the performance of a business.

.....

.....

.....

.....

.....

.....

.....

.....

.....

.....

.....

.....

(5)

(Total 20 marks)

Q1

--	--



2. Governments can influence business activity. One way this can be done is by tariffs.

(a) (i) What is a tariff?

.....  
.....  
.....

(1)

(ii) List **four** benefits for the country setting the tariff.

.....  
.....  
.....  
.....  
.....  
.....  
.....  
.....

(4)



A large retail chain has the following hierarchical structure. The number in brackets shows the number of people in that position.



(b) Using the chart above, explain why this is a hierarchical structure.

.....

.....

.....

.....

.....

.....

.....

.....

.....

.....

.....

.....

.....

.....

.....

(5)



Businesses pay their employees a wage or a salary. Sometimes businesses will further reward their employees by paying commission and bonuses.

(c) Show the difference between commission and bonus as methods of rewarding staff.

.....

.....

.....

.....

.....

.....

.....

.....

.....

.....

.....

.....

.....

.....

(5)



Leave blank

Good communication is an important aspect of business success. However, many businesses are not good at communicating with their employees.

(d) Consider the possible effects on a business if it has poor communication with its employees.

.....

.....

.....

.....

.....

.....

.....

.....

.....

.....

.....

.....

.....

.....

.....

(5)

Q2

(Total 20 marks)

**TOTAL FOR PAPER: 40 MARKS**

**END**

