

Component 2 Textile Design

Standard Mark = 53 marks

Performance Band 5: Confident and Assured

	AO1	AO2	AO3	AO4
Mark	13	14	13	13
Performance Band	5	5	5	5
	Just confident & assured	Mostly confident & assured	Just confident & assured	Just confident & assured

Keywords from the taxonomy:

Comprehensive, Exciting

Examiner Commentary

Presentation of work:

The submission has been clearly photographed and labelled. The Externally Set Assignment theme 'Protect' has been explored through a series of relevant investigations that demonstrate the candidate's intent. There is a focused and effective line of enquiry which provides purposeful and exciting evidence for all assessment objectives. The ability to experiment with textile techniques and processes is an obvious strength throughout the submission. The photograph of the 10-hour period of sustained focus realisation provides visual information about the three-dimensional qualities of the final garment and its surface texture.

Where the examiner found the evidence for the mark breakdown:

AO1 Develop: The development of ideas is focused and effective throughout. The candidate has evidenced a cohesive line of enquiry by investigating relevant sources and using them to inform their practical experimentation and final realisation. The contextual links are purposeful and inspire the candidate's designs and ideas.

AO2 Refine: Experimentation with a range of appropriate materials and processes is a strength throughout the submission. The candidate has selected and skilfully explored a range of textile techniques, culminating in a refined and resolved outcome during the 10-hour period of sustained focus.

Examiner Commentary

Where the examiner found the evidence for the mark breakdown (continued):

AO3 Record: The candidate uses a range of materials and techniques to draw things from both primary and secondary sources, achieving some skilful and exciting studies. Insights and intentions are annotated in a meaningful way.

AO4 Present: The final 10-hour period of sustained focus piece is also a strength of this submission. Ideas and experimentation come together and inform a comprehensive design for a constructed textile outcome. The candidate has made and embellished a textile garment, demonstrating that they are able to use a range of textile techniques and processes skilfully and confidently.

How the candidate could improve:

For the submission to move further into mark band 5, Confident and Assured ability, the candidate could demonstrate greater evidence of analysis and refinement of ideas.

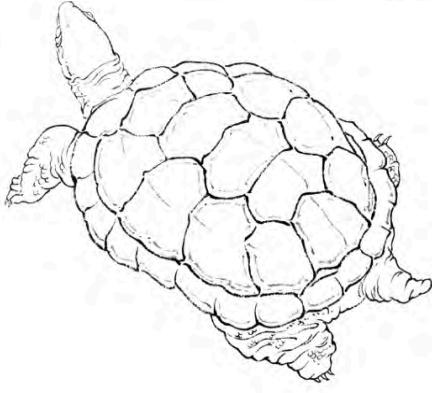
Marine Protection

Marine Organism

Sea turtle

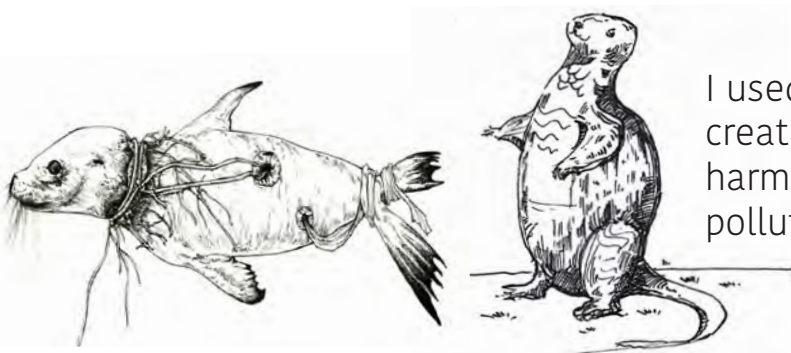


I did some research on how sea turtles are behaving because of man-made Marine pollution.



I used needle pen and marker to draw some turtles and extract shell patterns from them.

Seal



I used needle pen to create seal drawings harmed by marine pollution.

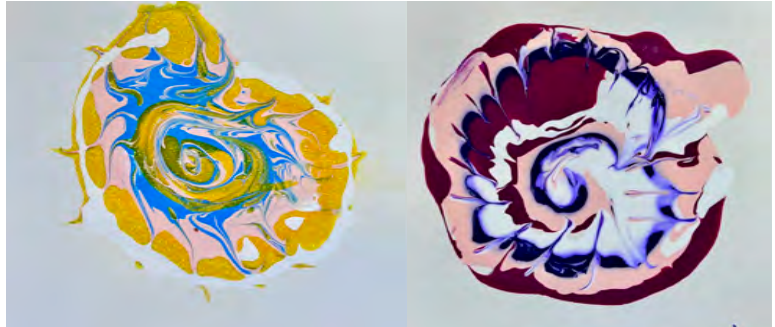
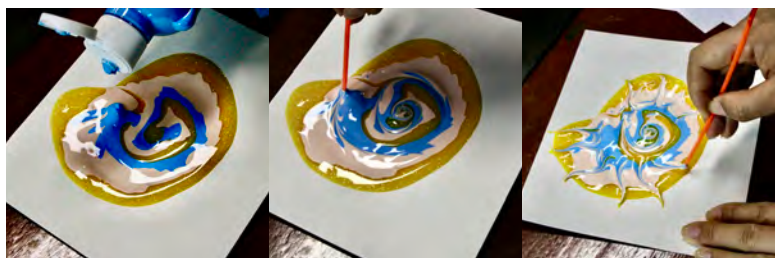


I want to extract the skin of the seal, because it's very smooth and has some special patterns.

Whelk



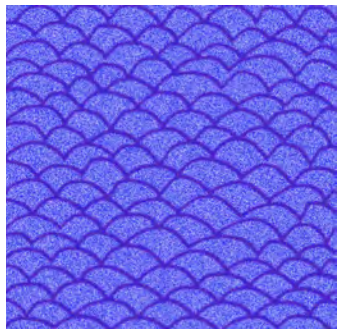
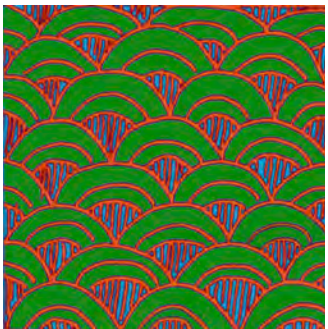
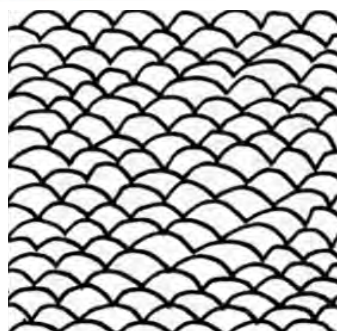
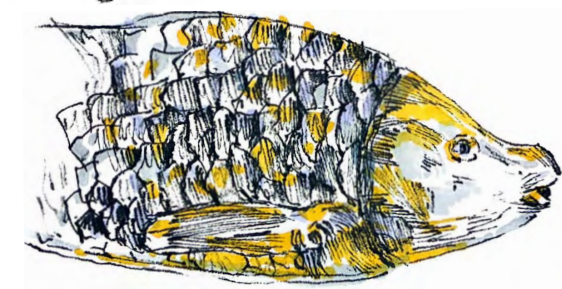
I used needle pen and marker to bring out the pattern and texture of the shell through tightly woven lines. Then I used acrylic paint to make a fluid painting of whelk which could highlight the scattered texture.



Fish



I used colored pencils, needle pens and markers to create these drawings of fish affected by Marine pollution.



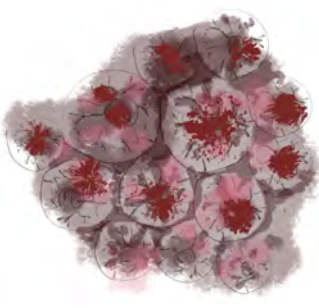
Marine Pollution

Overfishing



A surrealistic collage

I made some surreal collages to show that human overfishing of the ocean has caused huge changes in marine lives that affecting the ecological balance and thus affecting human beings.



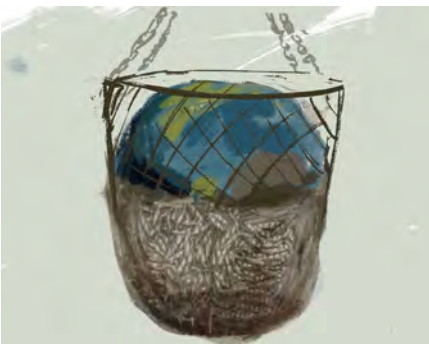
I refined some lines and patterns from the collage.

Artist Research

Her mixed media works centered around the environment showcase the destructive power of human activities and their impact on these magnificent lands and oceans.

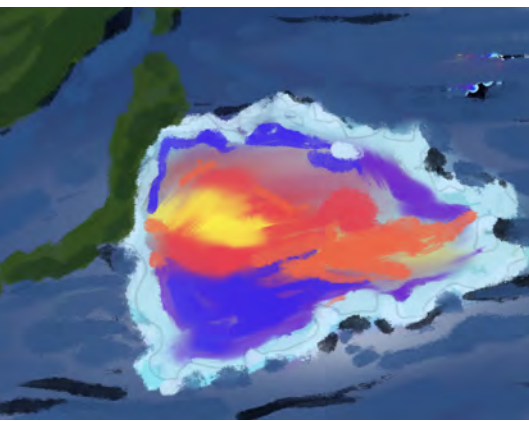
I studied artists and produced a painting about overfishing and fishing nets.

Natalia Kapchuk



Nuclear contamination

I did some research on what might happen to the ocean after nuclear contamination.



I extracted the outline of the path and direction of Japan's discharge of nuclear sewage.

I did some research on pictures of nuclear waste water and made drawings.



Artist Research



Bo Huang

The sustainable ocean themed art project "Returning to the Sea: Philosophy of the Anthropocene Ocean" by Chinese modern artist Huang Bo is currently on display. We hope to explore ways to reduce the use of disposable plastics, protect the environment, and protect the Earth.

Development 01

Artist research



Ysabel de Maisonneuve

Using ancient printing and dyeing techniques to express the eternal moment of printing, I learned his concept and used it in my turtle shell surface modification, and my printing and dyeing wants to remind everyone that protecting marine animals is our eternal topic.

Process diagram



I used cloth to cut and combine in order to show the pattern of the shell, and finally tie-dyed different colors to symbolize the marks of contamination and human injury to make appearance change.

Draping



Development 03

Process diagram



I made the fabric modification based on the patterns from the fish scales, mixed with epoxy glue, and put them on foam paper and yarn.

Draping



I made it by epoxy glue on the yarn. After the glue became hard, the transparent material showed the fish scale. After the surface was reformed, the shape was presented on the platform.

Process diagram



Draping



I took the lines of the whelk and folded the strips of torn fabric. Then I sewed them onto the fabric and into a loop.

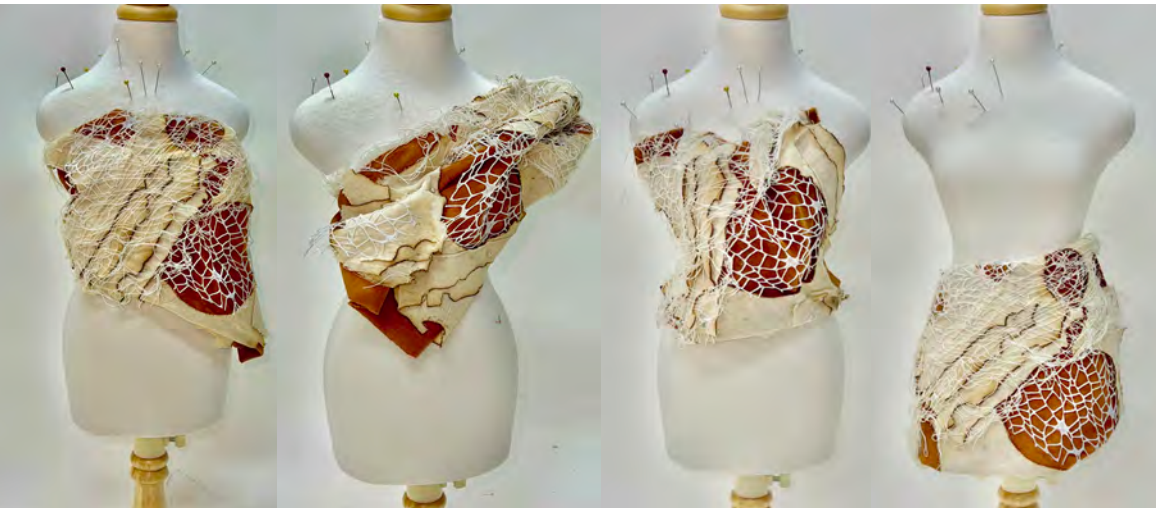
Development 02

Process diagram

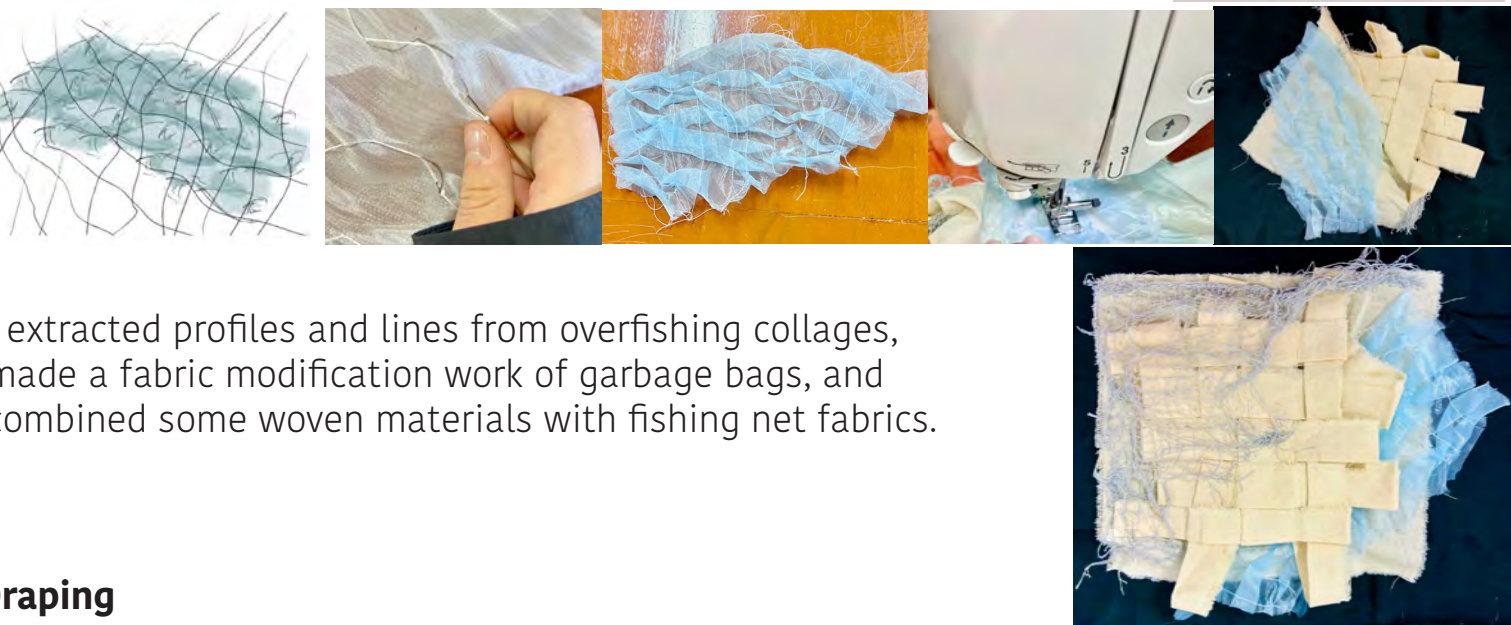


I burned the fabric after cutting to the intended shape with a lighter, overlaid and trimmed it, and sewed the mesh fabric.

Draping



Process diagram



I extracted profiles and lines from overfishing collages, made a fabric modification work of garbage bags, and combined some woven materials with fishing net fabrics.

Draping



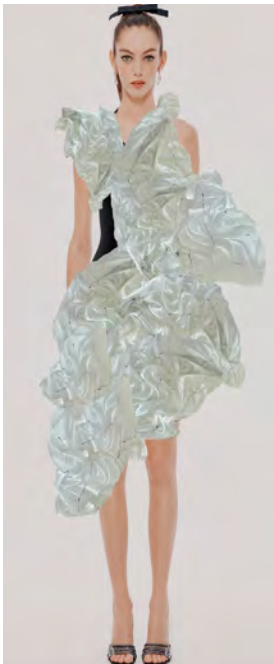
Development 04

Process diagram



I drew wavy lines on the yarn, sew with a needle, and pull the thread tight.

Draping



Process diagram



Epoxy glue after dry became hard which could be made to demonstrate texture and profile to reflect sewage discharge.

I mixed glue a and glue b, stirred and poured on foam paper to make the shape of a nuclear sewage discharge.

Further Development 01

Artist research



Iris Van Herpen

Iris van Herpen is a Dutch female fashion designer who excels in rational thinking and could perfectly combine design, art and fashion.

I used some fabric transformation to make shapes on the mannequin , gave the experiements some changes and alterations, and used markers and watercolors to reflect it.

Sketches



Further Development 02

Final Process



Final outcomes



Local detail

