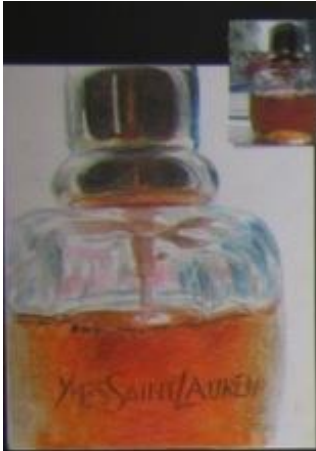


Assessment Objective	Mark
AO1	16
AO2	17
AO3	16
AO4	15
TOTAL	64

**Fine Art**  
**Exceptional**

Highly Skilled

# Research sheet one



**Pencil**  
I chose to draw this piece with a pencil because I thought that I would be able to draw more details and emphasize the reflections of light through the glass by being able to change the darkness of the lines.



**Pen**  
I used a black ballpoint pen to draw this piece because I liked the texture of ballpoint pens, especially with the rough and harsh lines. I was able to display lines more prominently since the picture had somewhat contrasting lighting.



**Water Colour**  
I chose to use watercolour for this picture as I wanted a lighter, painterly feeling and did not require excessive amounts of details. I used colour pencils to enhance the colour of flowers and leaves, making it more vibrant.



**Colour Pencil**  
Colour pencils were used as I believed I had more control over the lines, like the pencil drawings. Since the photograph I had chosen had very intricate reflections and bottle shapes.

**Acrylic**  
I used acrylic for this piece because I wanted paint smooth gradients on the glass and solid white reflections to make it look shiny.



# Research sheet two

I still like the particularity of objects with reflections such as those from a very white family, but seems to be a joy with extremely detailed reflections of the objects behind it, the patterns could be treated as lines. The subject would be observed directly due to all the. Janet Fish explains that even intricate as though everything, as represented by light.



In a mix of blue and yellow. All night the overall pattern takes on this painting to grey, which blends in and can be cut back as it looks almost abstract. Since the shape of the main part is distinct, I think to be very smooth, even if it can be messy.

A strong and flexible preserving the curves from, from observation skills and patience to be able to all of the people consisting of total colors, it from nature and light. It is quite soothing and beautiful. However it can also be messy as the painting is very blue over mainly due to the use of smooth, bright, colors.

**Beer and Brandy glasses, 1975, Oil on Linen**  
I used pencil to draw the rendition of Janet Fish's work because of the fast line and details and good control over my lines.



**Wine and Cheese Glasses, 1975**  
I also used pencil for Janet Fish's other two without good control over the pencil. I miss a few points.



**Broken No. 20**  
I used acrylic to draw the rendition for Todd Ford's glass, because I thought that acrylic was the best substitute for oil as it is removed or similar. I also find it easier to use acrylic as it dries more quickly and I can paint over the colours without needing too much.



**Acrylic**  
I used acrylic to create smooth gradients, and also used colors to make the painting feel heavier. I also wanted to have clear white reflections or highlights look more prominent and sharp.



I used watercolor for more control as the picture of broken glass is to use a pen to draw over the black parts so that it is more convincing.

**Watercolor**  
I used watercolor as Janet Fish tends to use darker and less vibrant colors in contrast to Todd Ford's work. I also used watercolor as I would have more control over the colours than acrylic or oil paint.



# Research sheet three





Final  
outcome

total mark  
64