

International GCSE Art and Design

Fine Art

Component 2

Total mark = 48



	AO1 Develop	AO2 Refine	AO3 Record	AO4 Realise intentions
Mark	12	13	12	11
Mark band	Band 4 Fully competent and consistent ability	Band 5 Just confident and assured ability	Band 4 Fully competent and consistent ability	Band 4 Mostly competent and consistent ability
			Total	48

Mark band:

Mark band 4 – Competent and consistent ability

Key word descriptors from the taxonomy:

Informed, purposeful, diverse, sustained, skillful, effective

Pearson – International GCSE Art and Design Taxonomy

How to use the Taxonomy in conjunction with the Assessment Grid

Both components in this qualification are 100% externally assessed, however centres will find it helpful to use the taxonomy and assessment grid to provide feedback on student's progress.

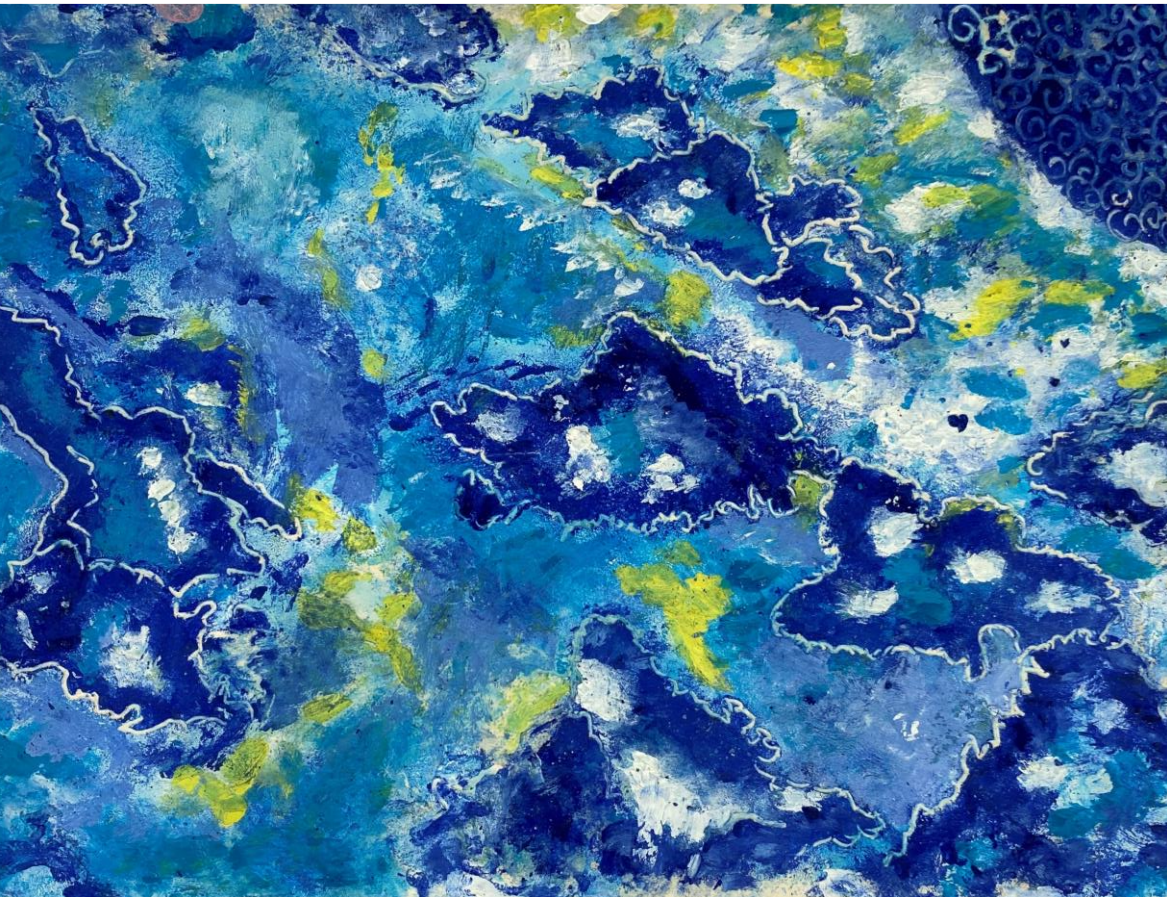
- When assessing work for each component, examiners will make a holistic judgement using the descriptors in the taxonomy, to establish which performance band matches most closely the candidate's work.
- Candidate's work that falls between two performance bands must achieve all the keyword descriptors in the lower band and some in the band above. Where this happens, examiners will use their professional judgement to decide which performance band is most appropriate using a 'best-fit' approach.
- After a performance band has been established, the next stage is to use the assessment grid to decide a mark within the performance band. Read through '*Applying the Assessment Grid*' on page 41 of the specification prior to establishing a mark for each assessment objective and total mark.

Performance bands	BELOW/INTERNATIONAL GCSE STANDARD (0)	LIMITED		BASIC		EMERGING COMPETENT		COMPETENT & CONSISTENT		CONFIDENT & ASSURED		EXCEPTIONAL
			LIMITED / BASIC		BASIC/EMERGING COMPETENT		EMERGING COMPETENT / COMPETENT & CONSISTENT		COMPETENT & CONSISTENT / CONFIDENT & ASSURED		CONFIDENT & ASSURED / EXCEPTIONAL	
Consider the keyword descriptors to the right carefully. Has the candidate achieved all, most or some of the descriptors?	No rewardable material	Unstructured Clumsy Disjointed Minimal Rudimentary	The candidate has achieved all of the keyword descriptors in the lower band and some of those above.	Deliberate Methodical Superficial Partial Unresolved Simplistic	The candidate has achieved all of the keyword descriptors in the lower band and some of those above.	Reflective Predictable Broadening Repetitive Intentional Adequate	The candidate has achieved all of the keyword descriptors in the lower band and some of those above.	Informed Purposeful Diverse Sustained Skilful Effective	The candidate has achieved all of the keyword descriptors in the lower band and some of those above.	Advanced Comprehensive Perceptive Exciting In-depth Fully resolved Risk-taking	The candidate has achieved all of the keyword descriptors in the lower band and some of those above.	Highly skilled Inspired Intuitive Sophisticated Insightful Powerful Daring Unexpected Outstanding
	0 marks	1 – 12 marks	13 14 15 marks	16 – 24 marks	25 26 27 marks	28 – 36 marks	37 38 39 marks	40 – 48 Marks	49 50 51 marks	52 – 60 marks	61 62 63 marks	64 – 72 marks

*Please note that as of November 2023, the Level 1 key word descriptor 'Crude' has been changed to 'Rudimentary'



I started my studies by capturing the water as it's the first place I want to go when I want to escape from my daily routine.



I also connect the sea with **SUMMER** holidays that's why I feel like it is always the best place to escape to.

A5 Study,
Oil paints on paper



A4 Study,
Acrylic paints on paper





The vibrant colours of this photograph reminded me of **SPRING**



A4 Study,
Watercolour pencils on paper



This is a photo I captured in **WINTER** when I went for a trip in the mountains after escaping from the busy city life.

A4 Study,
Oil paints on paper

A leafless tree as seen in **WINTER**.

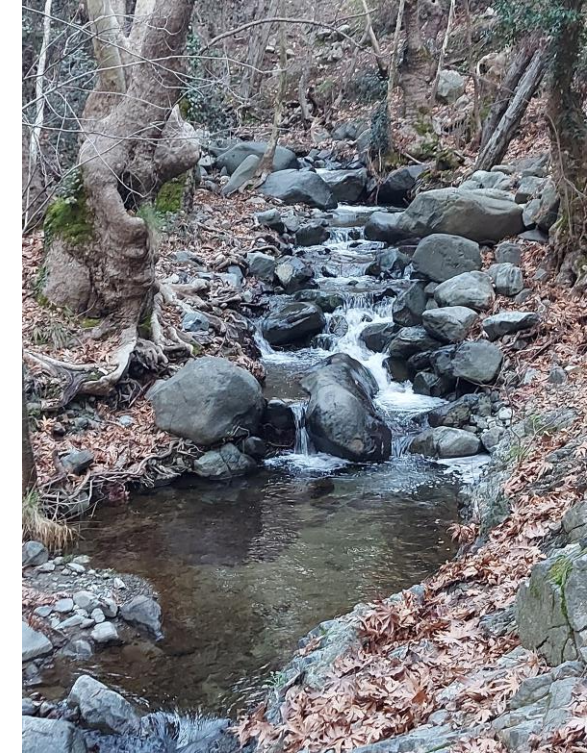


A4 Study, Pencil on Paper





An **AUTUMN** landscape captured while hiking in nature.



A5 Study,
Pastels on paper



Material Experimentation Study:

After capturing all seasons, I was mostly fascinated by the warm tones of **AUTUMN**.

I decided to focus on some elements that can mostly be seen in autumn.

21 x 21 cm, Mixed Media on paper



Materials used on previous study:



Colouring pencils



Oil paints



Watercolours



Stucco and Acrylic paints



Acrylic Paints



Paste and Acrylic paints

INTRODUCTION TO ARTIST ANSELM KIEFER:



A5 Study,
Oil paints on paper

My sunflowers study reminded me of Anselm Kiefer's sunflowers so I decided to study some of his artworks.

I like the fact that the same flower could be captured in two completely different ways depending on the season.



A4 Artist Study,
Paste and Chalk pastels on paper



Anselm Kiefer

The Orders of the Night, 1996, emulsion, acrylic, and shellac on canvas, 356 × 463 cm

Kiefer incorporates nature in his work in the form of soil, rock, tree branches, leaves etc.

While developing my Artist Studies on Anselm Kiefer
I introduced new materials in my work such as charcoal and chalk pastels.

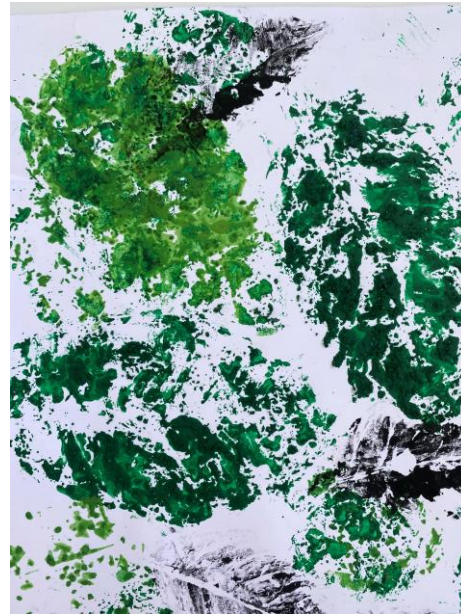


A4 Artist study,
Paste and Charcoal
on paper



Anselm Kiefer
The Gordian knot, 2019
Oil, emulsion, acrylic, shellac, wood and
metal on canvas
280 x 380 cm





MATERIAL EXPERIMENTATION (monoprints):

The aim of this experimentation was to capture the texture of the leaves in nature by making prints on paper.

This experiment was strongly influenced by my artist studies on Anselm Kiefer and by my decision to focus on the season of Autumn.

Materials used:

Watercolours
Acrylic paints
Spray paint
Paste
Sand
Salt





MATERIAL EXPERIMENTATION DEVELOPMENT :

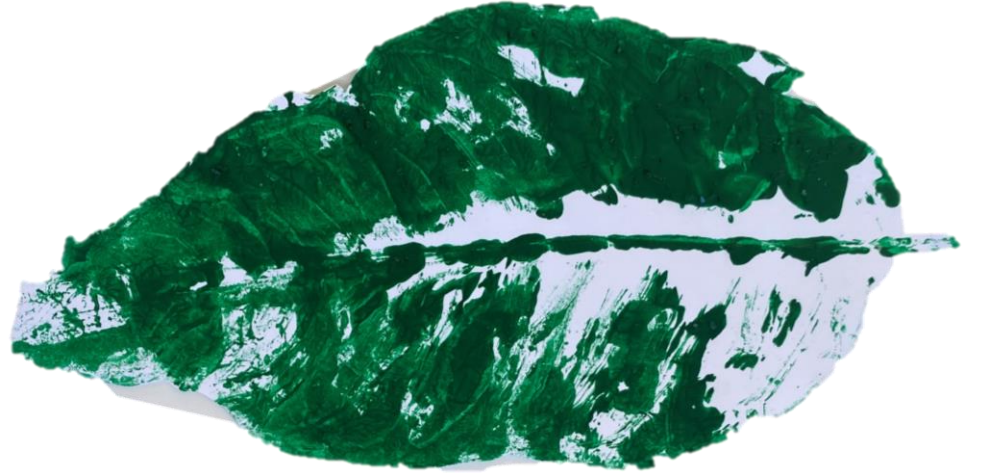
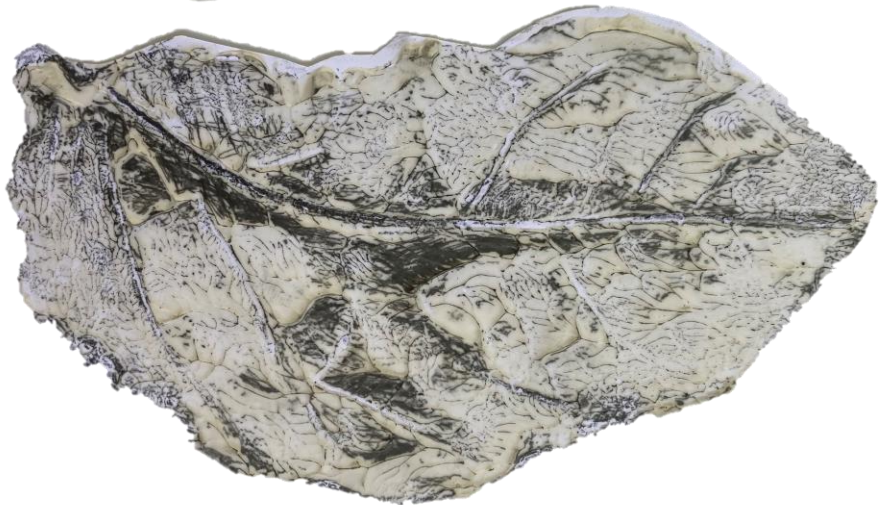
After printing the leaves on paper I decided to work over some of the prints to refine them and add more details.





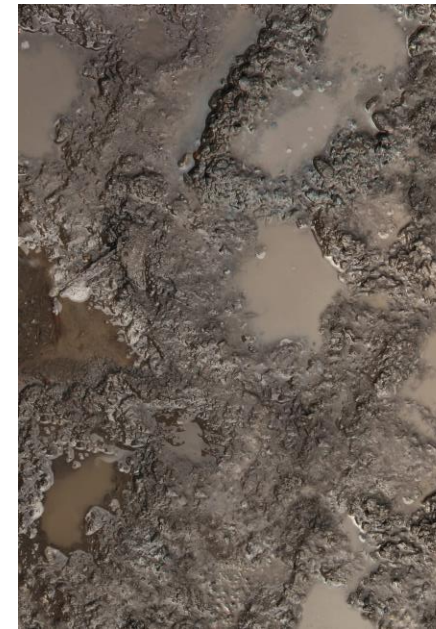
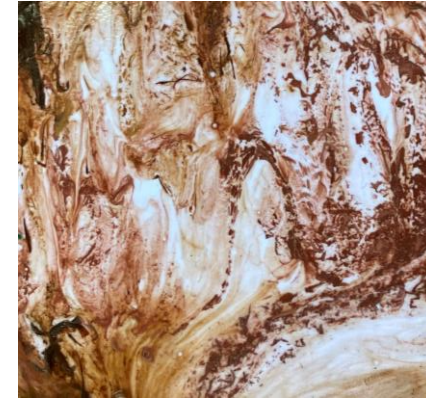
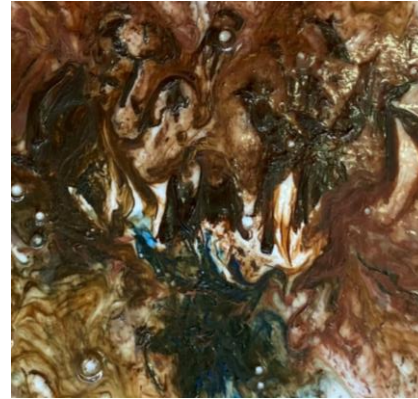
**MATERIAL
EXPERIMENTATION
WITH BLACK AND
WHITE MATERIALS:**

Materials used:
Charcoal
Pencil
Paste
Ink





Experimenting with materials to achieve the look of soil and leaves using the warm tones that can be seen during Autumn.



A3 Study,
PVA glue and Tempera



FINAL RESPONSE

My Final response was strongly influenced by my artist studies and how Kiefer managed to depict nature.

The final result was also influenced by my leaf prints and my autumn studies.

The materials I used are:
Acrylic paints
Charcoal
Pastels
Paste

A2, Mixed media
on paper