

Component 1 Three-dimensional Design

Standard Mark = 46 marks

Performance Band 4: Competent and Consistent

	AO1	AO2	AO3	AO4
Mark	12	12	11	11
Performance Band	4	4	4	4
	Fully competent & consistent	Fully competent & consistent	Mostly competent & consistent	Mostly competent & consistent

Keywords from the taxonomy:

Informed, Purposeful, Skilful, Sustained, Effective

Examiner Commentary

Presentation of work:

The candidate's work is imaginatively presented, looking at a range of flora in a variety of ways. The submission is well-documented, showing different processes using a range of media and a clear development of ideas.

Where the examiner found the evidence for the mark breakdown:

AO1 Develop: The candidate looks at and develops a variety of ideas inspired by their chosen theme 'Whimsical Flora'. They make well-informed judgements when analysing and making connections to a range of artists and art movements.

AO2 Refine: The candidate skilfully experiments with a range of media, materials and processes. Photographs are used throughout the submission to document the various stages of the work.

AO3 Record: Throughout the submission observations and insights are sustained, demonstrating a purposeful command of skills and techniques. A range of materials are used in an imaginative and effective way.

Examiner Commentary

Where the examiner found the evidence for the mark breakdown (continued):

AO4 Present: The final lamp sculpture design is inspired by a variety of whimsical flora shapes, colours and textures, demonstrating a clear understanding of visual language and realising intentions in a purposeful and meaningful way.

How the candidate could improve:

In order for the submission to move to the top of mark band 4, Competent and Consistent ability, the candidate's approach could be more diverse when demonstrating critical understanding.

Whimsical Flora

Common Plants

Pomegranate



Artists Srudy- The Flower Garden, 1888 is a drawing by Vincent Van Gogh



Dandelion



Photo Joiner



Artists Srudy- Blue Lettuce by Christine De Vuono



Grapefruit



Artist Study - Asya Kozina makes fashion from paper



Detail
Guzmania magnifica



Body Sculpture



Magical Flower

Create poetic and expressive compositions through bright contrasting colors, rich rhythms and dynamic brushstrokes.

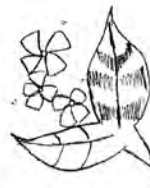
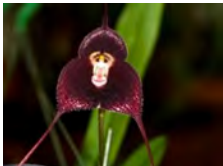
Dracula



Artificial

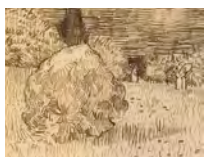


Stapelia gigantea



Artists Study

Vincent van Gogh - Jardin public à Arles

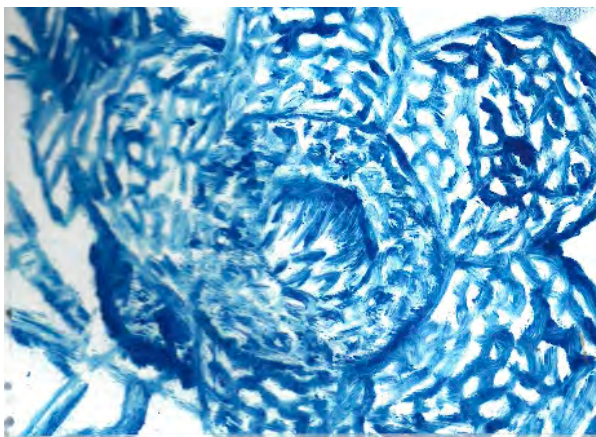


Printmaking- Additive

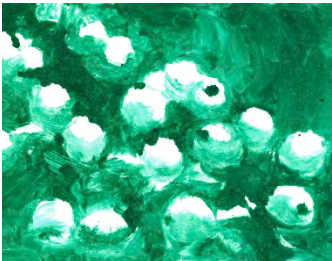
Rafflesia



Cannonball



Doll's Eye



Artists Study-Alexander Squier



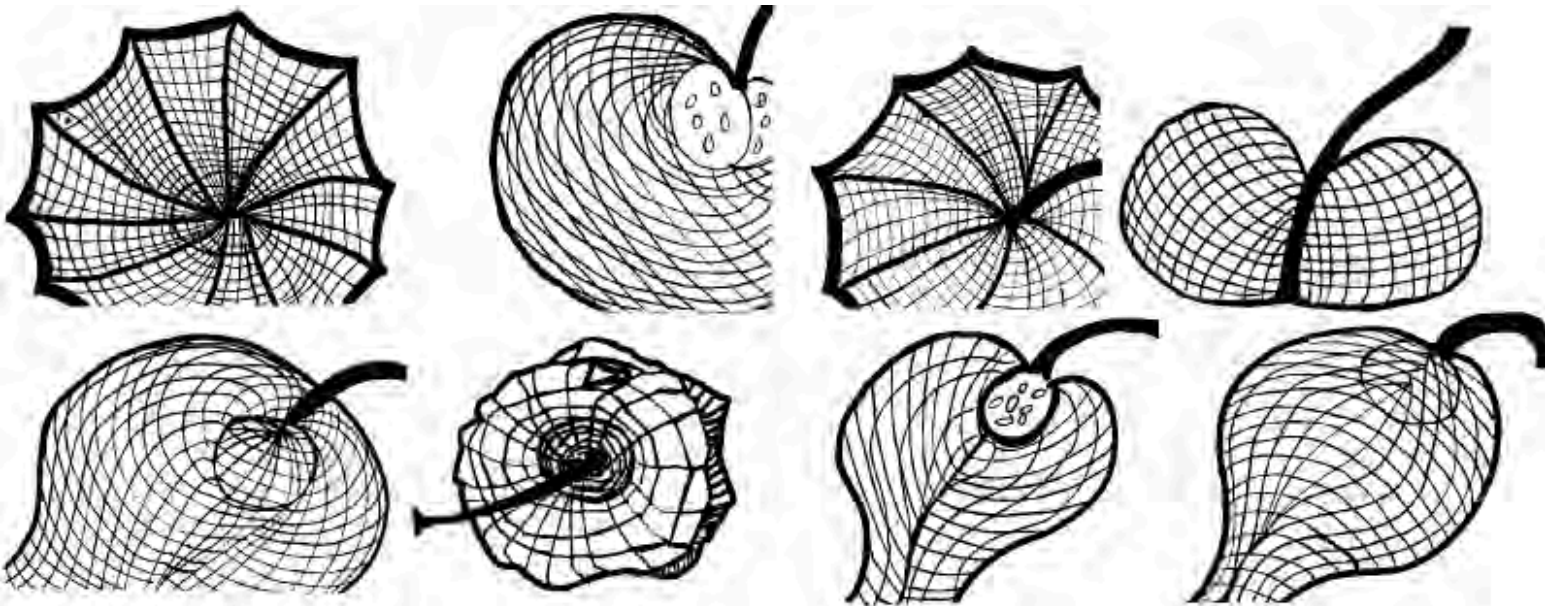
Create rich, painterly, full-color works using pumped oil-based printing inks and plastic printing plates.

Contour Drawing

Physalis alkekengi

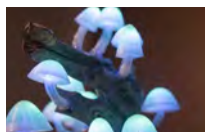
Surface/Incision Surface

Use longitude and latitude lines to represent surfaces and cut surfaces from different angles.



Acrylic Painting

Mushroom



Trametes



Colour Selection



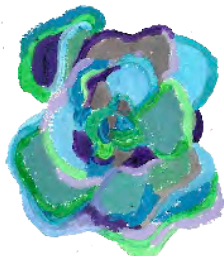
-Dry Brush Drawing



-Layered



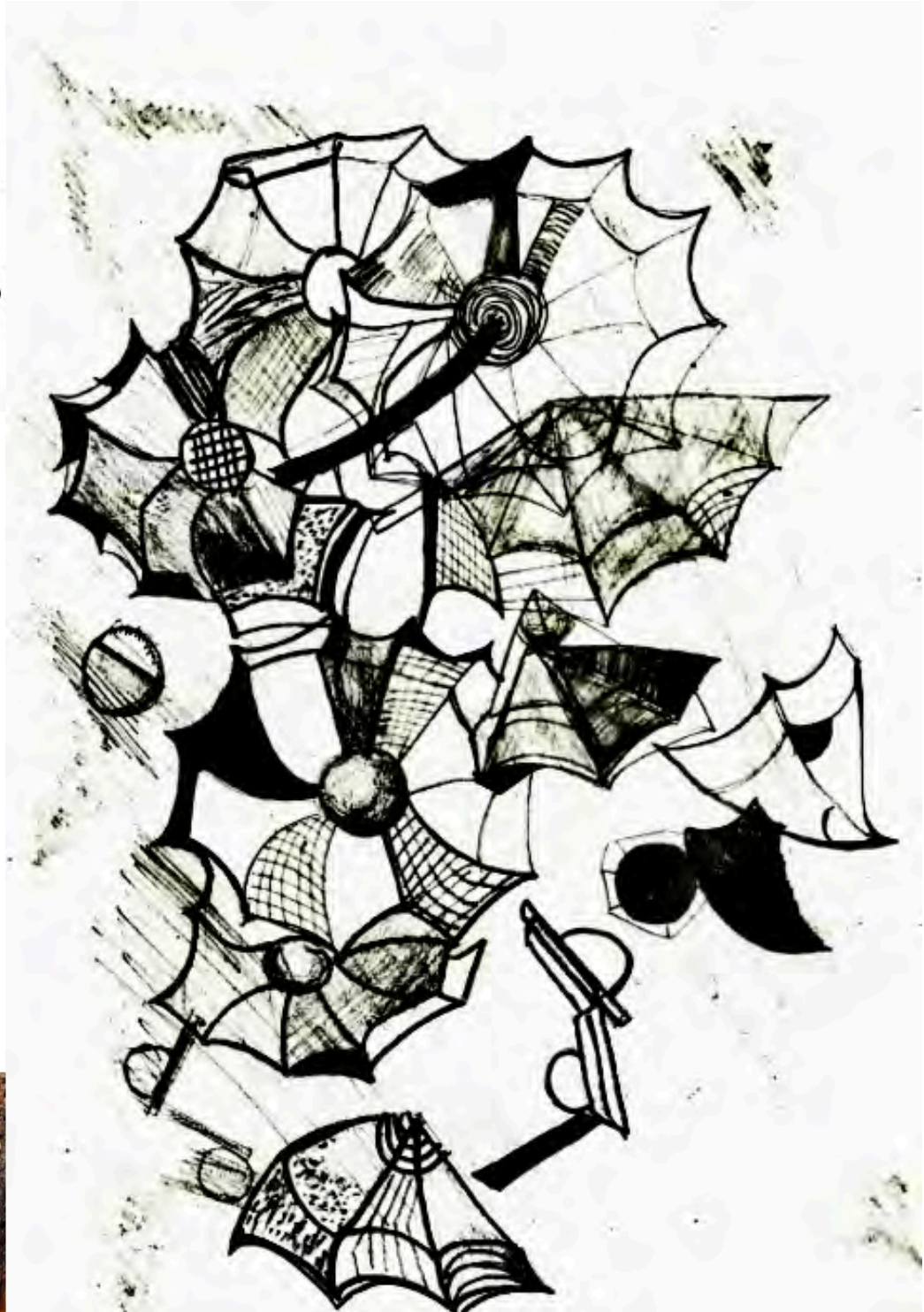
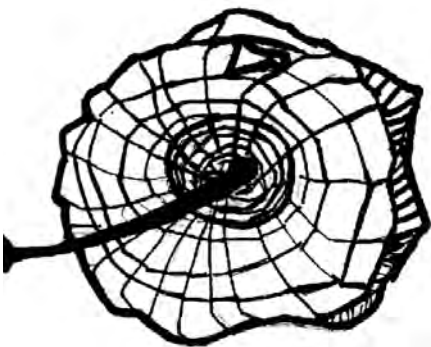
Colour Scheme Test



Use Acrylic Paints
Take advantage of six different color schemes.
Artists Study-Claude Monet: Madame Monet and Her Son



Cubism

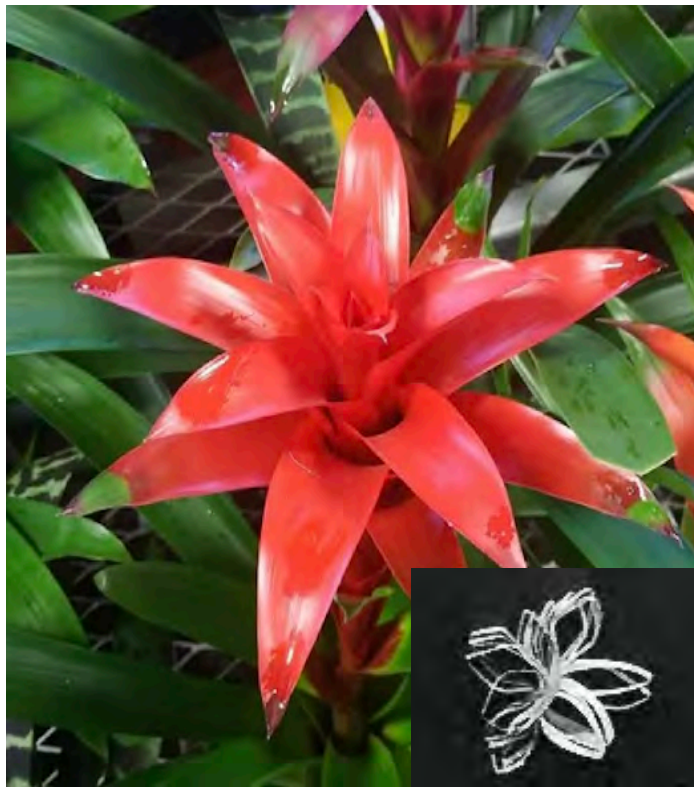


Artist Study-Pablo Picasso-Guitar

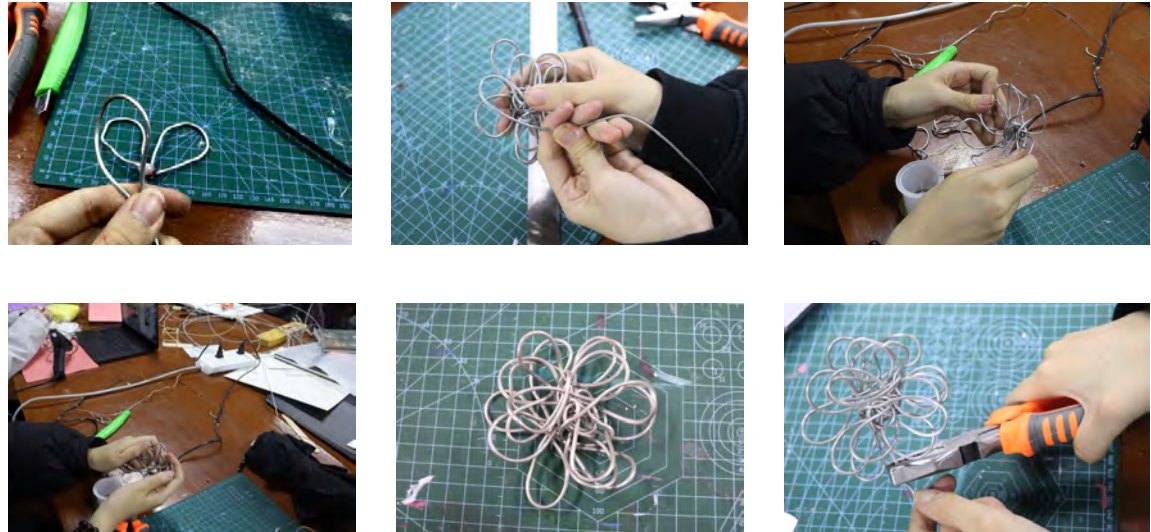
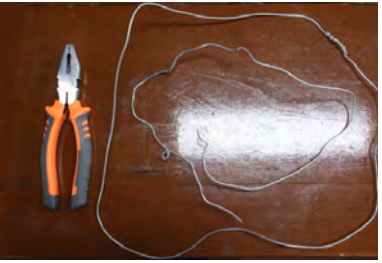


Development 01

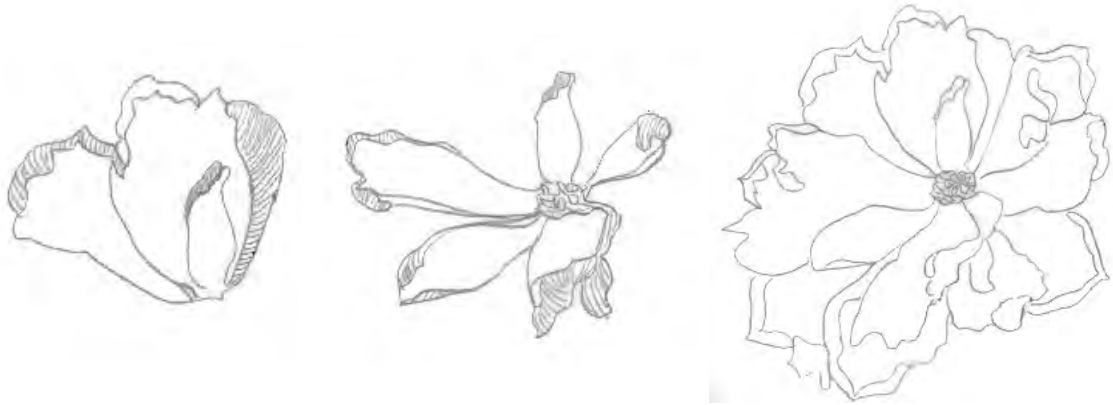
Guzmania Magnifica



Materials:
-Wrench
-Iron Wire
Process
- I use a wrench to twist the wire into a flower shape.



Antony Gormely
The concept of the work is always simple and straightforward, but it arouses strong questioning and thinking

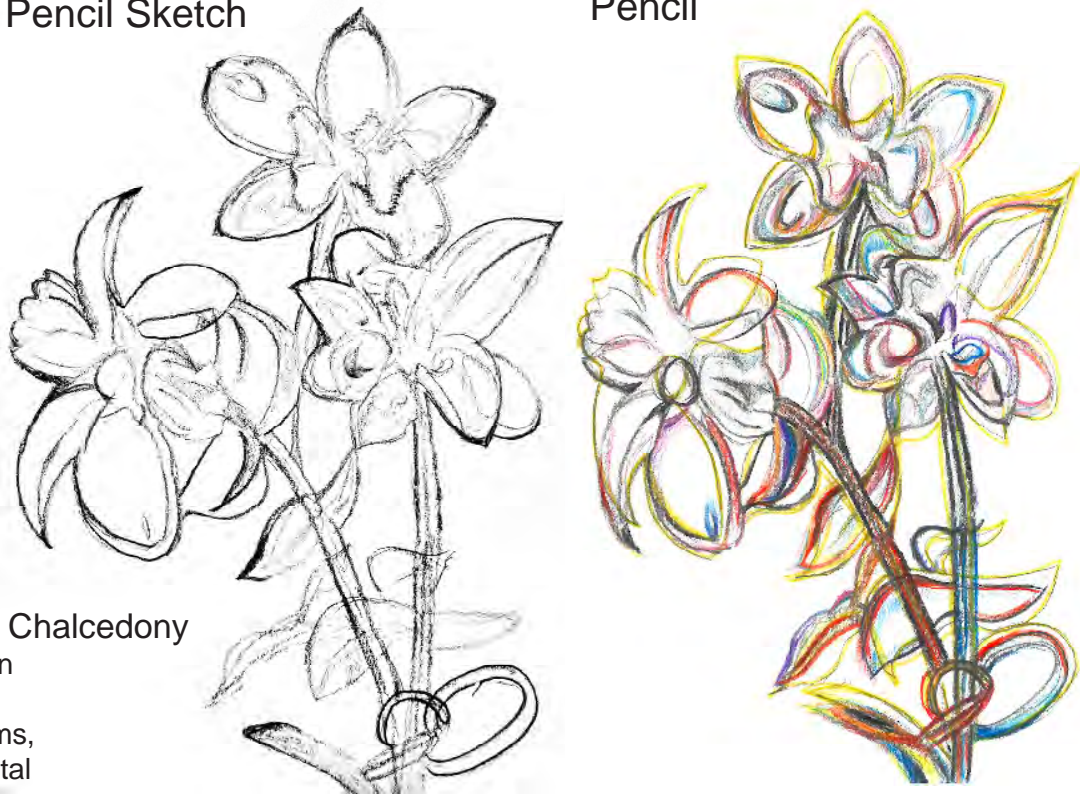


Development 02



Pencil Sketch

Pencil



Skeleton Flower
Julia Sinelnikova - Chalcedony
Julia Sinelnikova is an interdisciplinary artist working with holograms, performance and digital culture. .

Process

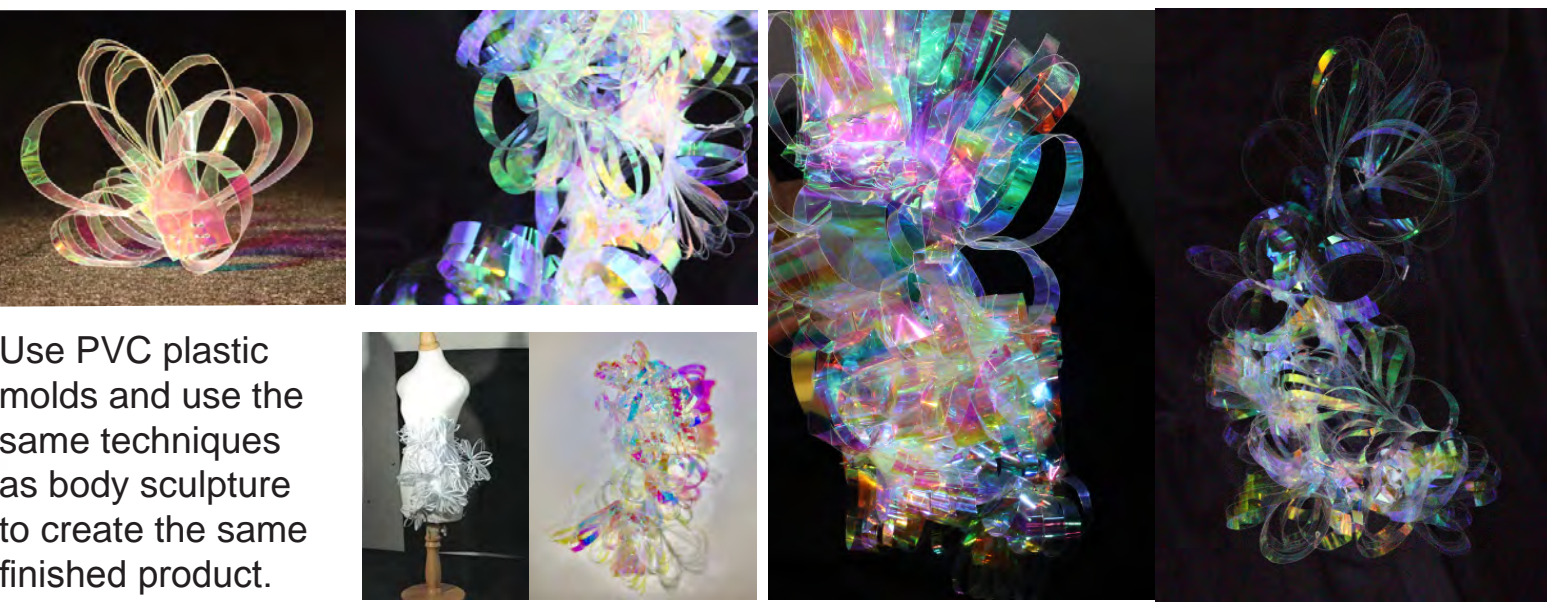


Materials:

- PVC plastic paper
- Stapler
- Scissors



Model Test



Use PVC plastic molds and use the same techniques as body sculpture to create the same finished product.

Development 03

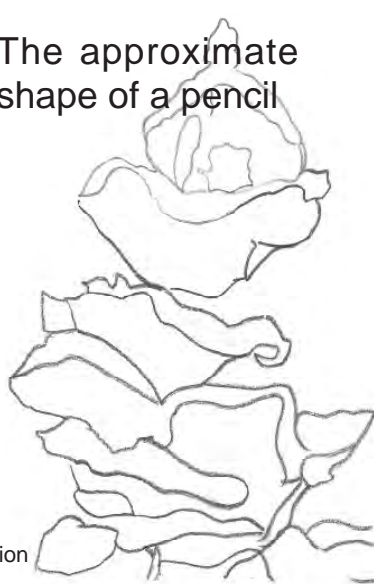


Podoserpula miranda



Peter Gentenaar
The artist specializes in transforming paper into large-scale paper sculptures using various colors, shapes and rotations. The origin of paper sculpture can be traced back to the invention of paper in the Han Dynasty of China.

The approximate shape of a pencil



Shape+Line



Use a combination of watercolor and acrylic.



Process



Model Test



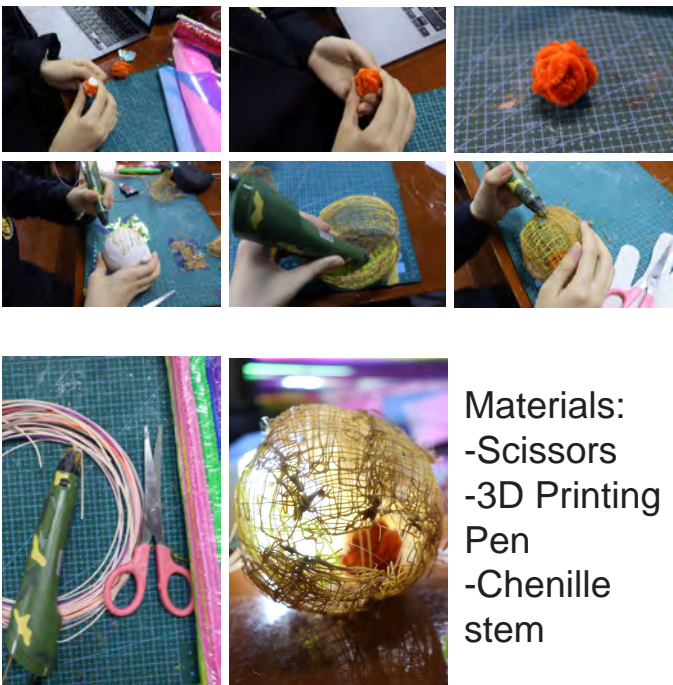
Materials:
-Paper
-Stapler
-Scissors
-Water mixable oil paint

Development 04

Physalis alkekengi



Process



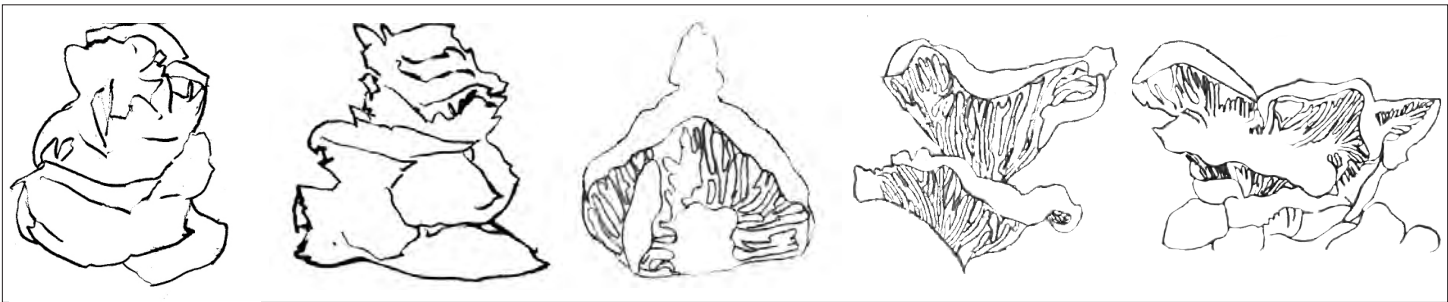
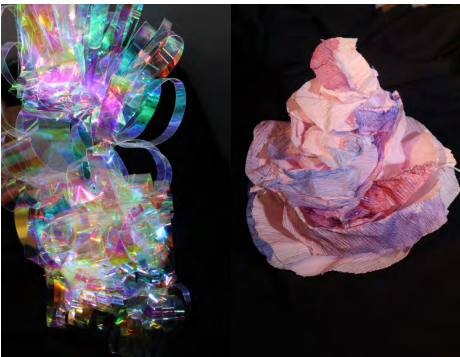
Model Test

A small experiment was conducted using a combination of lights and models.



Further Development 01

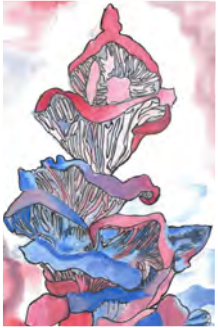
Podoserpula miranda shape Draft



Artist Study-James Shefik "Beautiful Failure" The results of his work radically alter the artist's investment of time and control over the outcome.



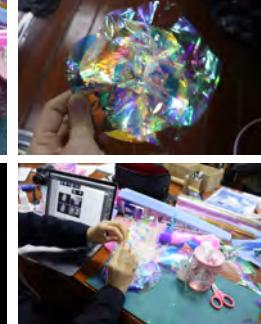
I use the material of PVC plastic paper and the appearance of Podoserpula miranda to create an experment



- PVC Plastic paper
- Stapler
- Scissors
- Light bulb



Process

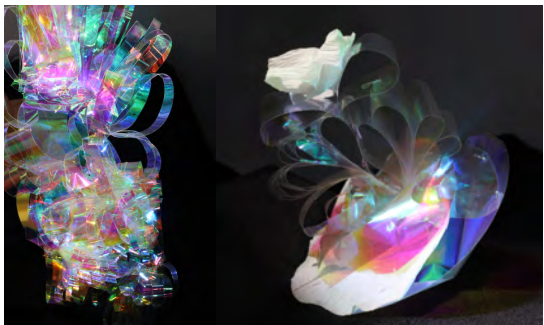


Further Development 02

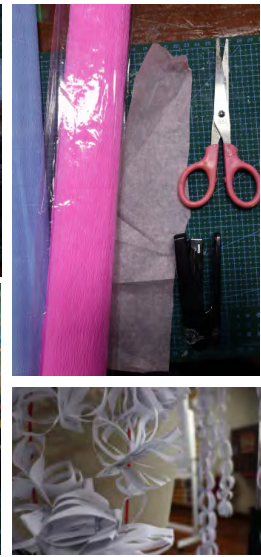
Design procces
The elements of body sculpture are used.

- Materials:
- Stapler
 - Scissors
 - Tissue Wrap

Model Test



Draft



Further Development 03

Draft



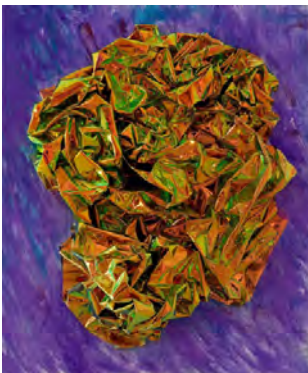
Artist Study-
Bobbie Gray



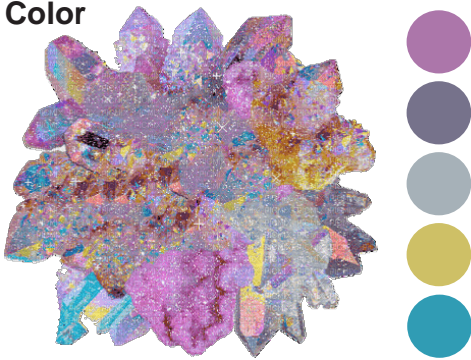
What initially seemed like an unnatural cacophony of shapes and colors turned into a new understanding of our human behavior. These elements highlight our relationship with the environment in this age of discard and neglect. Some plants themselves have an odd appearance. But there are also plants whose appearance is caused by human actions.

- Pvc Plastic Paper
- Stapler
- Scissors
- Light bulb
- Tissue Paper

Artist Study-Title of work: "Anonymous God"



Color



Materials



Process



Model Test



Final



I was inspired by a variety of whimsical flora shapes, colors, and textures (Podoserpula Miranda, Guzmania Magnifica, Skeleton Flower, Physalis) and combined them. Why make them look 'whimsical'. It is their appearance or rarity.

Finally, I designed a lamp sculpture, connecting hundreds of PVC plastic paper 3D printing pens and tissue paper to form colorful shapes. I imagine the symbiotic space created by various "whimsical plants".

Under the "ugly" appearance, there is a sensitive heart that would like to be taken seriously, and there are also some psychological activities, just like 'us'(humans). It may appear simply to attract 'us' attention in the hope that we will "protect" it.

