

Assessment Objective	Mark
AO1	10
AO2	10
AO3	10
AO4	12
TOTAL	42

# Fine Art Competent & Consistent

Informed  
Purposeful  
Effective

# Research sheet one



Graphical paper are successful in bringing out a girl being away from view. Upon creating the paper, white outlines were left. Green glasses were being attention to the girl's hair and her hair also sets in or object with objects in it.



A character's face is hidden under an African mask. Pastel paper has helped in conveying the color pencil shades as well as the pen shades. Wash out has been used to highlight the wall.



This pencil shaded image shows a woman whose hair is partly hidden with a cap. A few strands of hair are falling down her face. Different pencil shades have been used to bring out the layers in her face.



This is a shadow of a person created when standing under the sun. Only the person's socks are shown. The rest of the body is hidden. Colors pencils, pastels and soft pencil is used.



The idea of texture helps to hide off all over a serial identity under the light, used colors and. The hat also hides part of his hair. Purple white have been used up water-colour paper to try out the almost colours.



This is a soft, pastel related an water-coloured paper to create a blurry effect. The features of the face are not very visible, bringing out the hidden forms.



A soft pencil with the skin and mouth covered by a wash has been shaded entirely in blue on yellow water paper. Circles, wavy and strong designs have been used in the wash.



The girl's eyes are covered with shades and also her face is partially covered by her blowing hair. 3 distinct colors in pastel have been used on embossed paper: red, black and grey.



A hand painting a red circle has behind a window has been painted on water-colour paper. The rest of the picture is hidden.

# Research sheet two



An art student that goes by the name "only CHUCK" on the website "bevanart" has used the idea of gauguin using acrylics and his style is influenced by Francis Alys. His work depicts hidden identity under the vibrant colours. I used a similar style of shading the face using acrylics with bright colours on a portrait of a girl. Brush stroke technique is used.

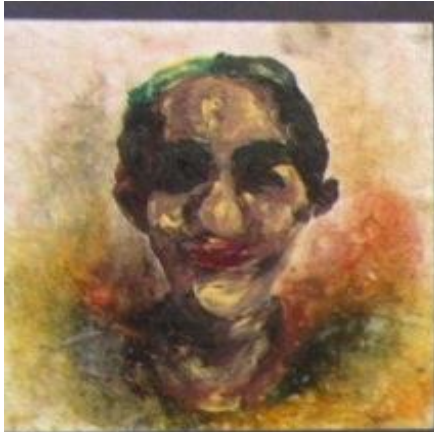


Carl Purcell lives in Utah. This piece of art work is shaded using charcoal where part of the man's identity is hidden in the dark and the picture blurs on the edges. I used a similar idea of the blur effect on my picture. However I worked on brown paper and used charcoal as well as soft pastel.



Kenneth Obaku's work is called "Bush Seed". He lives in San Tomé, West Africa. He worked in canvas using oil and acrylic paints for his raw and beautiful art work. I created a similar mask with hidden Africa identity using pastels and the idea of colour, shape and lines to create shades.

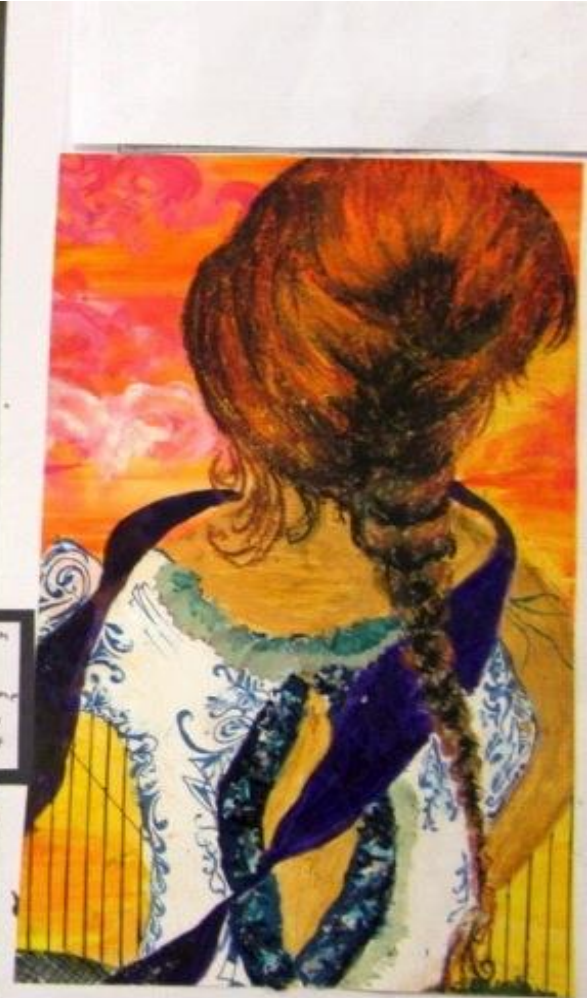
# Research sheet three



This picture shows the blurry effect developed from A01 and A02. Instead of water colour paints and charcoal, acrylic paints have been used with pastel.



This image is a combination of the portraits with a scarf and shades in A01. They have been etched on scrapbook paper and a blue and red pen has been used to draw. This accentuates the hidden elements.



This picture is a combination of the mask from A01, with the idea of shapes from Kenneth's work as well as feminism from ONLY CHUCK. The curtain from A01 covers the mouth. It has different patterns and shapes on it, partly done with etching. The window glass are popping out of the curtain with a 3-D effect using gouache paint.

This picture is a combination of a scarf and hat from A03 and it has been developed to form a Muslim girl with only her eyes seen. Water colour paint has been used and the background portrays a beach, with a palm tree and the sea painted using a palette knife and acrylics.



I used the shades from my A01 and the idea of circles in the A02 mask. The shades this time are painted in water-colour from ultra violet and the circles in these are pieces of blue and silver and paper to create reflection of light.

This image is a combination of designs from the mask in A01, to put the corn modified the hair of a girl, done on scrap paper in A01. The media used for this painting is pastel for the hair. Paint is used for the rest of the work. Pencil sharpening are used as a design. 3/9 is used as well.



Final outcome  
total mark  
42