

Assessment Objective	Mark
AO1	6
AO2	7
AO3	6
AO4	8
TOTAL	27

Fine Art Basic/Emerging Competent

Broadening

Research sheet one



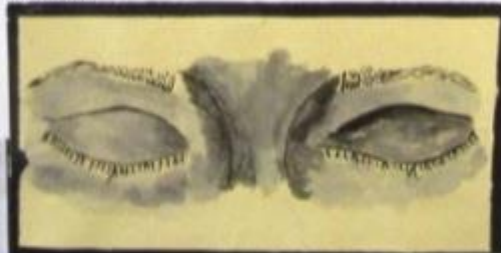
This is a painting of a woman wearing a scarf on her head. It presents the theme of hidden because the woman's hair or face is hidden underneath the scarf commonly worn due cultural or religious backgrounds. The media used is black ink and the technique used is ink wash painting.



This is an observation of a sunset. It presents the theme of hidden because the sun is partially hidden behind the clouds. The media used is shading pencils.



This is an observation of a man with long hair. It presents the theme of hidden because the long hair is partially hiding the man's face from view. The technique used is shading and the media used is black biro pen.



This is an observation of closed eyes. It presents the theme of hidden because the closed eye is hidden behind/ covered by the eyelid. The media used is watercolour pencils.



This is an observation of smoking lips. It presents the theme of hidden because as the mouth exhales smoke the contents inside the mouth (tongue, teeth & gums) are hidden behind the cloud of smoke being exhaled. The media used is white watercolour and colour pencil.



This is an observation of African necklaces. It presents the theme of hidden because even if we are able to see the silhouette of the neck we are still unable to see the natural state and colour because it is hidden underneath the necklaces. The media used is water colour pencils.

Research sheet two



This is a watercolour painting by New Zealand artist Henrietta Harris part of a mist and fog exhibition series, the media used in the artist's work is watercolour paints. My transcription of the painting using a photograph taken by myself where instead of using the artist's media of choice I have used the artists technique of applying a mist background hiding features of the individual presenting the theme of hidden. The media used is soft pencils and charcoal.

This is a painting by American artist Georgia O'Keefe of the inside details titled Pink Tulip. My transcription of the photograph where I have adopted the artist's technique of drawing and painting closely, into a section of the skirt image by magnifying the hidden and detailed patterns in African material (Kigoma). The media used is colour pencils.



This is an oil painting by Polish Artist Karol Bak titled Between Dawn & Dusk. My transcription of the painting. I have applied the artist's inspiration techniques of using the Anarecho cycle and the sailing ship cycle and incorporating them into the traditional West African 'Gala' that covers/hides the head or hair underneath presenting the theme of hidden. The media used is black fine pen, colour pencils and pastels.

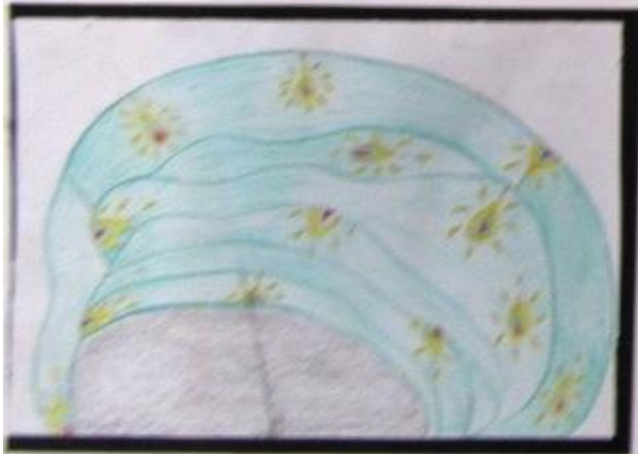
Research sheet three



This is the development of the smiling lips and the skin effect whereas the smiling lips are used to be the source of the overblinking and blurring the facial features. The technique used is, while the media used is water colour, gouache and soft pencil.



This is a combination of the sunset and the long-haired woman whereas it presents the beauty of nature over the sunset merges with the long-haired woman's face creating the beauty of a part of her face and hair and it partially takes the rest of her face. The media used is gouache and soft hair pen.



This is a combination of the face and long-haired and a sunset face. It presents the beauty of nature over the upper part of the face takes the woman's lower facial structure. The media used is colour gouache and soft hair pen.



This is a combination. The face continued with the vibrant natural drawings to form an abstract and detailed mixed face. It presents nature because the face takes the hairline of the individual individual and the hairline part. The media used is colour gouache.



Final outcome
total mark
27