

Moderators' Report/ Principal Moderator Feedback

Summer 2012

International GCSE
Fine Art (4FA0), Graphic Design
(4GC0), Photography (4PY0),
Textiles (4TE0).

Edexcel and BTEC Qualifications

Edexcel and BTEC qualifications come from Pearson, the world's leading learning company. We provide a wide range of qualifications including academic, vocational, occupational and specific programmes for employers. For further information visit our qualifications websites at www.edexcel.com or www.btec.co.uk for our BTEC qualifications.

Alternatively, you can get in touch with us using the details on our contact us page at www.edexcel.com/contactus.

If you have any subject specific questions about this specification that require the help of a subject specialist, you can speak directly to the subject team at Pearson.

Their contact details can be found on this link: www.edexcel.com/teachingservices.

You can also use our online Ask the Expert service at www.edexcel.com/ask. You will need an Edexcel username and password to access this service.

Pearson: helping people progress, everywhere

Our aim is to help everyone progress in their lives through education. We believe in every kind of learning, for all kinds of people, wherever they are in the world. We've been involved in education for over 150 years, and by working across 70 countries, in 100 languages, we have built an international reputation for our commitment to high standards and raising achievement through innovation in education. Find out more about how we can help you and your students at: www.pearson.com/uk

Summer 2012

Publications Code UG031750*

All the material in this publication is copyright

© Pearson Education Ltd 2012

CONTENTS

Page

1. Introduction	4
2. Edexcel website support	4
3. Endorsements	5
4. The Assessment Objectives.	6
5. Assessment overview	7
6. Reviewing, refining and modifying research for the practical examination.	7
7. Practical examination and preparatory studies	8
8. The six week preparatory period	8
9. Fine art endorsement submission. Delicate	9
10. Ten hour examination	10
11. Timed Examination final outcome fine art endorsement Delicate	12
12. Submitting preparatory studies and ten hour examination for external assessment	12
13. Summary	12
14. Centres wishing to move their candidates forward and improve their performance must address the following issues.	13
15. Grade boundaries	14

Introduction

Entries for this year's International GCSE specification came from many countries including, Bangladesh, Bermuda, China, Cyprus, Denmark, Egypt, France, Falkland Islands, Germany, Greece, Qatar, Russia, Oman, Kuwait, India, Kenya, Libya, Macao, Malaysia, Pakistan, Singapore, Sri-Lanka, Spain, Switzerland, Turkey, United Arab Emirates, United Kingdom and the United States of America. All entries for the examination once again showed the rich cultural diversity of the various countries making submissions.

The International GCSE specification aims to provide all centres with the framework to develop and devise courses for Art and Design across all four endorsements:

- Fine Art
- Graphic Design.
- Photography
- Textiles

The specification is 100% examination externally set and marked. Centres can enter students for more than one endorsement in any one examination session. This is an option an increasing number of centres are taking advantage of. Fine art continues to be the most popular endorsement chosen by centres followed by graphic design, photography and textiles. Entries for photography have increased significantly this series as have those entries for fine art.

A key feature of the specification is it allows teachers the freedom to approach the assessment objectives in the way which best suits them and their students.

Edexcel website support

A document introduced last series which centres may find useful and which can be found on the Edexcel website is the '**Centre Guidance Document**'. Centres new to the qualification will find this document particularly useful. This covers;

- Key events and deadlines
- Entry information
- Endorsed titles
- Assessment summary
- Summary of scheme of assessment
- External examination and preparatory studies
- The practical examination

- Private candidates
- After the examination
- Instructions for the dispatch of work
- Special consideration
- Malpractice
- Grade awarding
- Enquiries about results

With regard to administration, not all centres submitted authentication forms with candidate's submissions.

If you have a question about the International GCSE Art and Design specification '**Ask the Expert**' is a resource you may decide to use. Information about this resource can be found on the Edexcel website under information for teachers.

Exemplar materials for International GCSE can be viewed and download from the Edexcel International Art teacher's community forum website:

http://community.edexcel.com/art_and_design/m/artigcse/default.aspx

Currently the exemplar materials are for the fine art and graphic design endorsements only. In the new academic year these exemplars will be updated to include examples of photography. This is a resource for existing centres, those new to the qualification or those who are considering delivering it in their centres. The exemplar materials show examples of candidates work ranging from exceptional to weak with comments by the Chief Examiner and with written comments by the students taken from their research.

A programme of professional development and training, covering various aspects of the specification and examination can also be found on the website for 2012-2013. Centres may also wish to contact their Regional Development managers for further information and support. Courses currently being planned will take place in Bermuda, Cyprus and Bangladesh.

Endorsements

Within the four endorsements offered the majority of centres have a very clear understanding of the requirements laid down in the specification content. Examiners commented on the quality and depth of study in graphic design and photography submissions showing considerable improvement from the previous series. Centres should be commended for the work they have undertaken

with their students in these endorsements. Unfortunately examiners found and commented on the limited scope, exploration and execution of some textiles submissions made this year. There are still a very small number of centres who enter candidates for the various endorsements who have limited understanding of the requirements of the specification in the context of the endorsements. It is vital that centres have a clear knowledge of the endorsement content being taught to candidates when planning and structuring courses for future submissions.

The Assessment Objectives.

The assessment objectives should be seen as inter-related activities not stand alone components. Unfortunately there are some centres as noted by examiners that still approach the assessment objectives in chronological order. When structuring courses and in the preparatory six week period for the examination, this should be borne in mind. However centres structure their courses they should ensure the chosen themes or genres are sufficiently flexible to allow candidates to make a personal and informed response. Many centres are now using past examination themes when planning and structuring courses. This in turn allows candidates to pursue their own creative journey of discovery. Within this planning a number of centres need to place greater emphasis on working from firsthand experience.

It was disappointing to see a number of highly skilled candidates, with signs of creative potential, at the middle range of marks, because they had failed to submit evidence for a particular assessment objective.

AO1. Record observations, experiences and ideas which are appropriate to intentions.

AO2. Analyse and evaluate images, objects and artefacts, making informed connections with the work of others.

AO3. Develop and explore ideas, using a variety of media and processes that are appropriate to intentions.

AO4. Review and refine ideas, modifying work as it progresses, before presenting a coherent personal response.

Assessment overview

- Examination piece (maximum size A2) with six weeks preparatory time and 10 hours examination time
- Up to three sheets of preparatory studies (maximum size A2 sheet) carried out during the six- week preparatory period
- 100 marks are available for this assessment

Reviewing, refining and modifying research for the practical examination.

With the help of the centre it is important that candidates review, refine and modify their submission for presentation. Choosing the work which best illustrates their ability at covering all four assessment objectives.

Below are strengths and weaknesses highlighted by examiners which illustrate this area of the examination in the May 2012 submissions. It is hoped these points will help centres improve the overall standard of their candidates ability to review, refine and modify ideas as they progress.

Strengths

- Appropriate and ongoing annotation.
- Recording using an exciting range of media
- Work which reflects an understanding of the purpose of visual research.
- Appropriate contextual links in the visual form or including short written analysis.
- Sequential development of ideas using appropriate materials.
- Taking photographs of work in progress.
- Evidence of an understanding of the formal elements.
- Experimenting with media
- Primary source images

Weaknesses

- Some centres presented research where there was too much emphasis on writing.
- Unedited 'downloads' from the internet.
- There was an over-reliance on secondary images.
- Research was superficial, incomplete or disorganised.
- Copying with no purpose.
- No sequential journey.
- Little visual analysis.

- Research where the intentions were not clear.
- One or more of the AO's not covered particularly AO2
- Little understanding of the requirements of the specification.
- Not using all space available on research sheets
- Small scale of images on research sheets (photography)

By improving the quality of research it is hoped that candidate's final personal response will be ambitious and imaginative.

Practical examination and preparatory studies

Those candidates who performed of their best were generally from centres that had provided a well structured beginning to the examination. Good time management during the six week research period can also help candidates in their planning. It was clear however that some centres had given very little support to candidates in helping them 'un-pick' the exam paper.

Centres are reminded that the candidate response to the examination should be supported by a taught six week period prior to the ten hour examination. Centre's should download and print the paper as soon as it is posted on the Edexcel website (1st February) to enable them to prepare teaching and learning resources to support their candidates in the six week period.

The six week preparatory period

The six week preparatory period prior to the exam is a taught period where art teachers can help and advise students about their work. It is helpful if as work progresses students can then choose their best idea collecting more reference material to help in their exam. Examiners noted that interpretation of the theme Delicate was sometimes direct and highly effective. This was due to early intervention by the centre to provide candidates with a secure base from which to work. Where centres used the preparatory sheets as part of the journey and related them to the personal outcomes they achieved high levels of success.

Where centres achieved very high marks, this was the result of a highly focused and dedicated approach to supporting candidates.

In some centres there was a distinct lack of evidence for AO2 or the research was superficial this then had an impact on the resulting achievements of the candidates. Examiners commented that some centres failed to show evidence for AO2 resulting in these

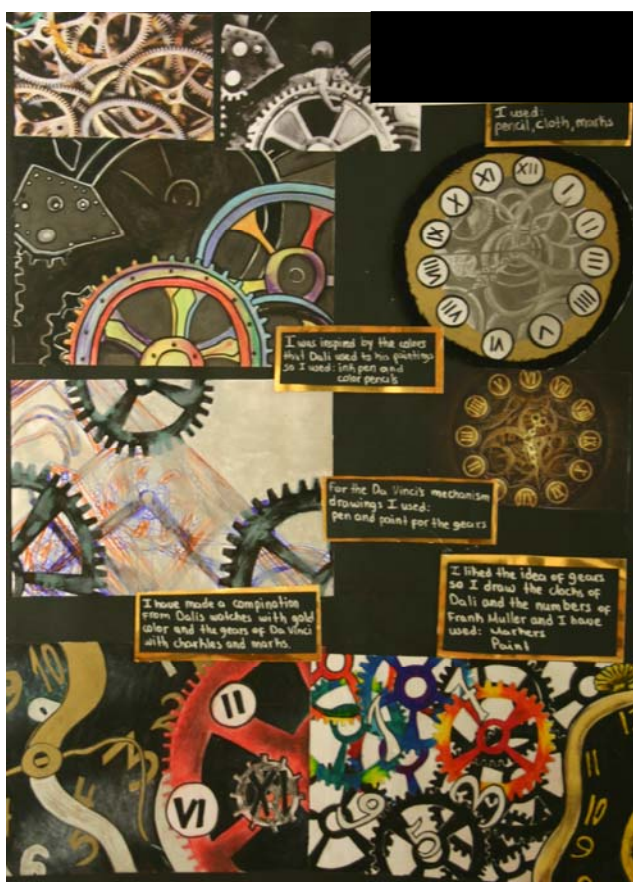
candidates losing marks. In contrast the majority of centres had a clear understanding of the assessment objectives producing very personal and individual work.

It was pleasing to note that many centres gave candidates the opportunity to use a wide range of materials using a variety of processes.

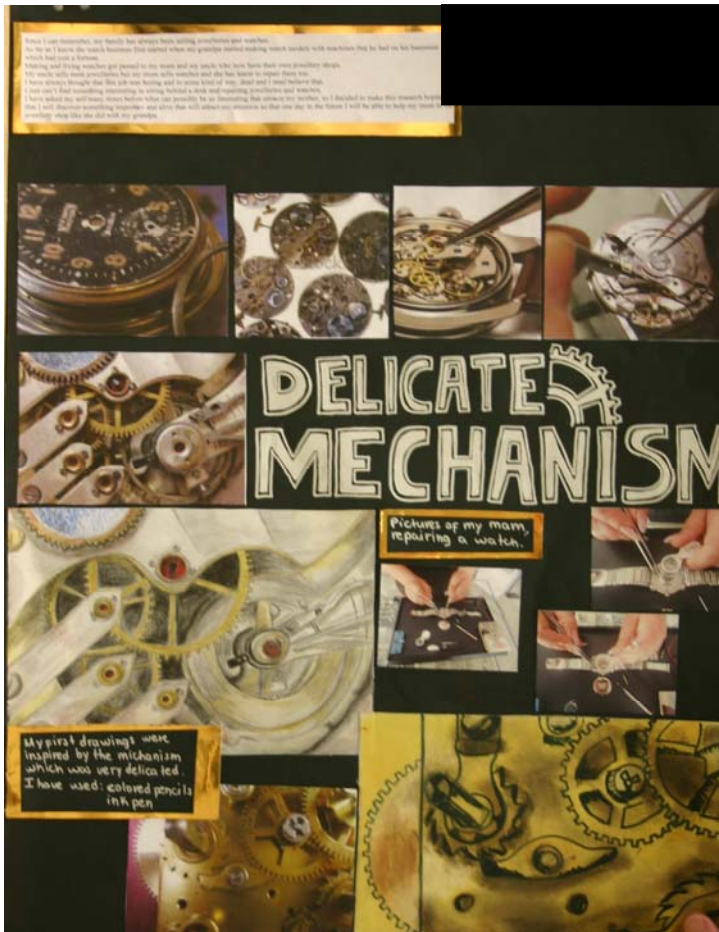
Within the research presented for assessment it was noted by examiners there was an excess of secondary images used by a number of candidates. Too much copying and repetitive work can waste vital space on the research sheets. It is important that centres balance the level of primary and secondary sources used by candidates. Examiners also noted that where candidates reiterated images on their research sheets it prevented these candidates from developing their full potential.

First hand photography was effectively used by a number of candidates. Imaginative role play situations were created and recorded to support final outcomes. A number of candidates also used photography when planning and setting up still life groups and in recording the process of three dimensional works.

An example of a fine art endorsement. Research sheets one and two.



Research sheet three



Ten hour examination

Good use of materials and high standards of skill were evident in a large number of submissions. Examiners noted many candidates successfully used mixed media, pencil, acrylic paint, photography and digital manipulation in their submissions. In centres where candidates received very low marks it was clear that teaching in these centres had not addressed the AO's and the basic concept of the specification. Thus candidates had little or no understanding of what was required.

The lack of having access to a wide range of materials in no way disadvantaged some candidates' submissions.

A number of candidates repeated their personal responses from their supporting studies in their final outcome. Centres need to discourage candidates from simply repeating images from their research in the final outcome. In many cases the second repeat was less vibrant than the original first study produced on the research sheet. Developing ideas remains difficult for a number of

candidates. For some candidates the final outcome bore no relationship to the initial research.

There was varied use of annotation; it was effectively used by many candidates where it was used to inform and develop thinking rather than being mainly descriptive. An effective visual vocabulary was established by higher mark range candidates. A number of weaker candidates who wasted space on the preparatory studies sheets with 'space filling' teacher intervention could have avoided this practise.

A number of centres did not cover AO2 and therefore lost significant marks. Examiners noted that a number of candidates had a sporadic lack of evidence to support AO2.

Final responses to AO4 helped support and strengthen the other AO's. This occurred particularly in the photography endorsement. Careful selection of work is needed by candidates who must make full use of the time available to them. They must avoid including work which does not inform the final outcome or which is irrelevant to the theme. There were a significant number of centres this year that had excellent outcomes in AO4.

Examiners noted the theme for this year's examination of 'Delicate' has been very well received by centres and candidates. The sub headings of the main theme; delicate situation, delicate mechanism, delicate surfaces, delicate balance and delicate natural forms were the most popular.

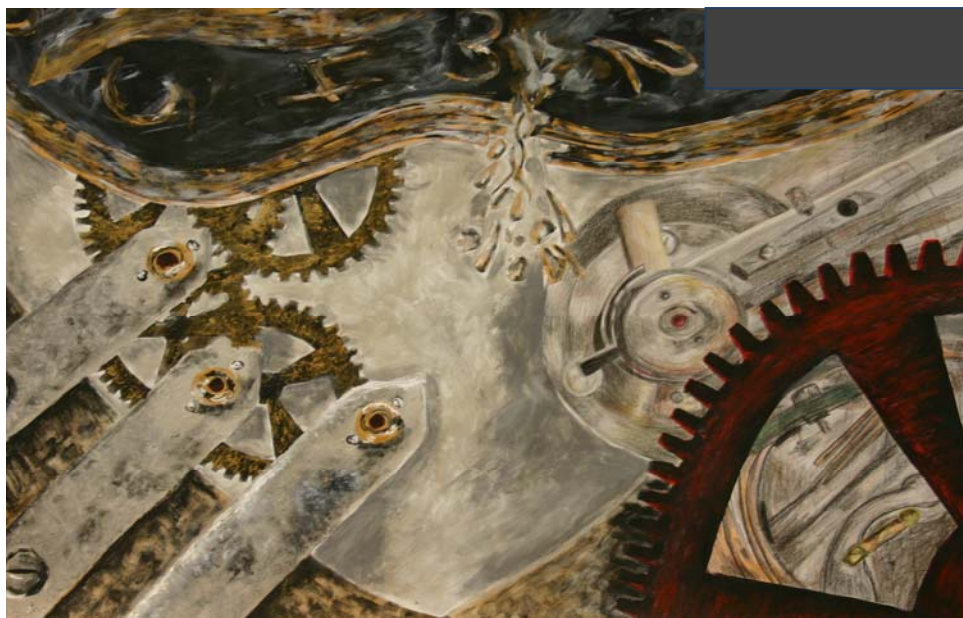
Examiners commented on successful choices made by candidates included; mechanisms, emotional and delicate situations, confectionary, musical instruments, political, social and environmental issues. Less successful choices included under the sea, babies and cells many of which relied heavily on secondary sources.

Examiners commented that many candidates produced individual, personal and creative responses to the theme. Candidates produced final outcomes which were sustained and focussed. Successful contextual references included, Elizabeth Blackadder, Ansel Adams, Andy Goldsworthy, African Body Art, Ernst Hackel, Janet Fish, Alexander Mc Queen, Jenny Saville, Bridget Riley and Georgia O'Keefe.

The theme is a starting point and candidates may work from any of the starting points suggested by the theme or they may develop a relevant starting point of their own on the theme of 'Delicate'.

In general it was a pleasure and privilege to see the quality of work produced by candidates for their examination. It was clear that the quality of teaching and learning in some centres was outstanding. These centres are to be commended for their enthusiasm, imagination and endeavour to provide candidates with the platform to give their best in the examination

Final outcome Fine art endorsement



Submitting preparatory studies and ten hour examination for external assessment

The format for submitting work for the examination is made clear in the specification and examination paper. Further guidance can also be seen in the 'Centre guidance document' highlighted earlier in this report. Unfortunately this year we have seen the return of centres overlapping work on research sheets or including work on both sides of research sheets. We have also had some centres sending in A1 size canvases. If the final piece, is fragile bulky or larger than A2 in size, the centre must make arrangements to photograph the work.

Summary

Good teaching, well structured courses and appropriate resourcing ensure that candidates perform to their full potential in the examination. There was much evidence of this in the May 2012 series. **Disappointingly however there were some centres submitting work who had little understanding of the requirements of the specification.** To move forward these centres must become much more familiar with the International

GCSE specification. They may also wish to take advantage of the various Professional Development and Training opportunities being offered in 2012-13 information for these events can be found on the Edexcel website.

Centres wishing to move their candidates forward and improve their performance must address the following issues.

- Centres must develop a course structure underpinned by the assessment objectives in preparation for the examination.
- A clear understanding of the specification content for the endorsements.
- Good teaching and learning stem from an emphasis on recording visually from first hand experience.
- With the help of the centre it is important that candidates review and refine their submission for presentation choosing the work which best illustrates their ability at covering all assessment objectives.

Grade Boundaries

Grade boundaries for this, and all other papers, can be found on the website on this link:

<http://www.edexcel.com/iwantto/Pages/grade-boundaries.aspx>

Further copies of this publication are available from
Edexcel Publications, Adamsway, Mansfield, Notts, NG18 4FN

Telephone 01623 467467

Fax 01623 450481

Email publication.orders@edexcel.com

Order Code UG031750 Summer 2012

For more information on Edexcel qualifications, please visit
www.edexcel.com/quals

Ofqual




Llywodraeth Cynulliad Cymru
Welsh Assembly Government



Pearson Education Limited. Registered company number 872828
with its registered office at Edinburgh Gate, Harlow, Essex CM20 2JE