

Write your name here

Surname

Other names

**Pearson Edexcel**  
**International**  
**Advanced Level**

Centre Number

--	--	--	--	--	--

Candidate Number

--	--	--	--	--	--

# Core Mathematics C2

## Advanced Subsidiary

Monday 13 January 2014 – Morning  
**Time: 1 hour 30 minutes**

Paper Reference

**6664A/01**

**You must have:**

Mathematical Formulae and Statistical Tables (Pink)

Total Marks

--

**Candidates may use any calculator allowed by the regulations of the Joint Council for Qualifications. Calculators must not have the facility for symbolic algebra manipulation, differentiation and integration, or have retrievable mathematical formulae stored in them.**

### Instructions

- Use **black** ink or ball-point pen.
- If pencil is used for diagrams/sketches/graphs it must be dark (HB or B). Coloured pencils and highlighter pens must not be used.
- **Fill in the boxes** at the top of this page with your name, centre number and candidate number.
- Answer **all** questions and ensure that your answers to parts of questions are clearly labelled.
- Answer the questions in the spaces provided – *there may be more space than you need.*
- You should show sufficient working to make your methods clear. Answers without working may not gain full credit.
- When a calculator is used, the answer should be given to an appropriate degree of accuracy.

### Information

- The total mark for this paper is 75.
- The marks for **each** question are shown in brackets – *use this as a guide as to how much time to spend on each question.*

### Advice

- Read each question carefully before you start to answer it.
- Try to answer every question.
- Check your answers if you have time at the end.

Turn over ►

P43998A

©2014 Pearson Education Ltd.

5/5/5/



**PEARSON**

1. The first three terms in ascending powers of  $x$  in the binomial expansion of  $(1 + px)^{12}$  are given by

$$1 + 18x + qx^2$$

where  $p$  and  $q$  are constants.

Find the value of  $p$  and the value of  $q$ .

(5)

---

---

---

---

---

---

---

---

---

---

---

---

---

---

---

---

---

---

---

---

---

---

---

---

---

---

---

---

---

---



**Question 1 continued**

Lined area for writing the answer to Question 1.

**(Total 5 marks)**

**Q1**







3. The curve  $C$  has equation

$$y = 2\sqrt{x} + \frac{18}{\sqrt{x}} - 1, \quad x > 0$$

(a) Find

(i)  $\frac{dy}{dx}$

(ii)  $\frac{d^2y}{dx^2}$

**(5)**

(b) Use calculus to find the coordinates of the stationary point of  $C$ .

**(4)**

(c) Determine whether the stationary point is a maximum or minimum, giving a reason for your answer.

**(2)**

---

---

---

---

---

---

---

---

---

---

---

---

---

---

---

---

---

---

---

---

---

---

---









Leave blank

**Question 3 continued**

Lined area for writing the answer to Question 3.

**Q3**

Two empty boxes for marking the question.

**(Total 11 marks)**



4. The first term of a geometric series is 5 and the common ratio is 1.2

For this series find, to 1 decimal place,

- (a) (i) the 20<sup>th</sup> term,
  - (ii) the sum of the first 20 terms.
- (4)**

The sum of the first  $n$  terms of the series is greater than 3000

- (b) Calculate the smallest possible value of  $n$ .
- (4)**

---

---

---

---

---

---

---

---

---

---

---

---

---

---

---

---

---

---

---

---

---

---

---

---

---

---

---

---

---

---









5. The height of water,  $H$  metres, in a harbour on a particular day is given by the equation

$$H = 10 + 5 \sin\left(\frac{\pi t}{6}\right), \quad 0 \leq t < 24$$

where  $t$  is the number of hours after midnight.

(a) Show that the height of the water 1 hour after midnight is 12.5 metres. **(1)**

(b) Find, to the nearest minute, the times before midday when the height of the water is 9 metres. **(6)**

---

---

---

---

---

---

---

---

---

---

---

---

---

---

---

---

---

---

---

---

---

---

---

---

---

---

---

---

---

---

---



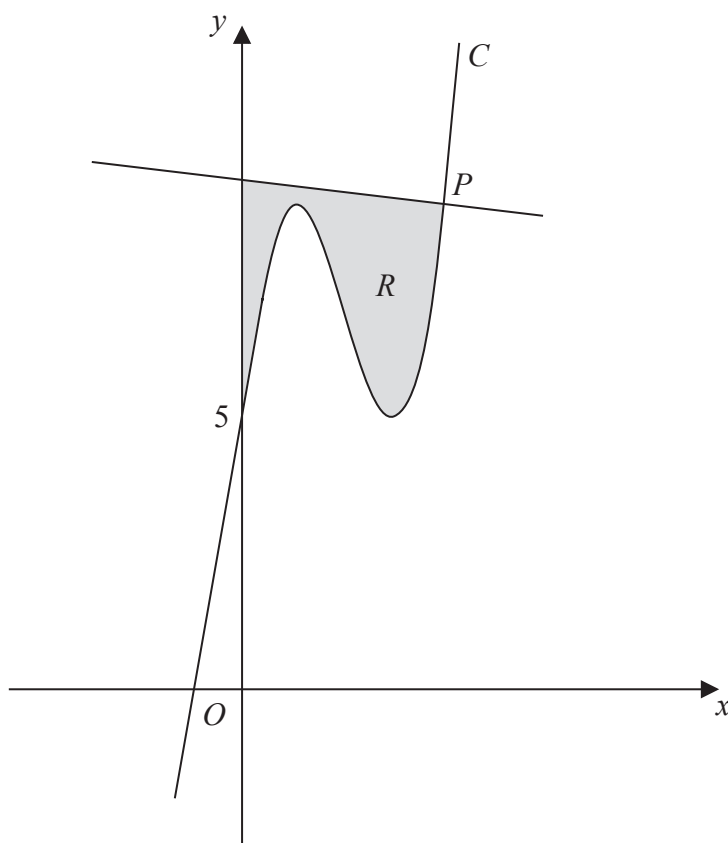








7.



**Figure 1**

Figure 1 shows a sketch of part of the curve  $C$  with equation

$$y = x^3 - 6x^2 + 9x + 5$$

The point  $P(4, 9)$  lies on  $C$ .

(a) Show that the normal to  $C$  at the point  $P$  has equation

$$x + 9y = 85 \tag{6}$$

The region  $R$ , shown shaded in Figure 1, is bounded by the curve  $C$ , the  $y$ -axis and the normal to  $C$  at  $P$ .

(b) Showing all your working, calculate the exact area of  $R$ . (7)

---



---



---



---



---



---





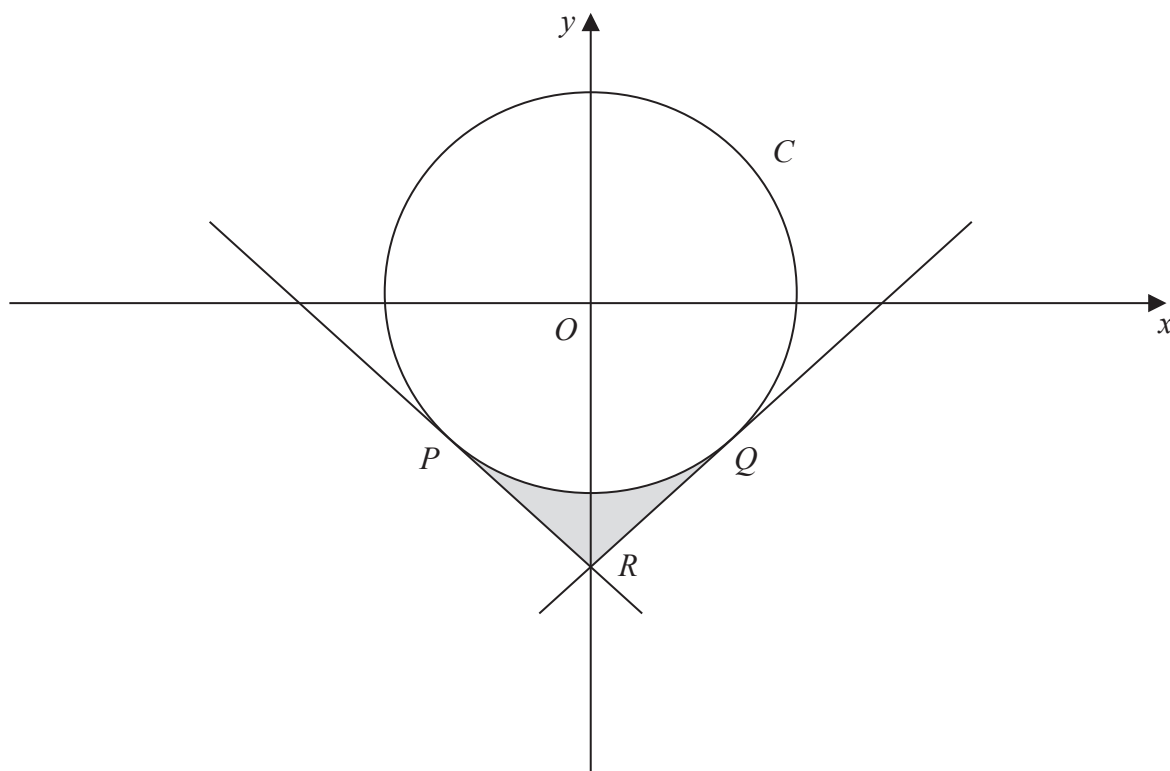
Question 7 continued

A series of horizontal lines for writing, intended for the answer to Question 7.





8.



**Figure 2**

Figure 2 shows a circle  $C$  with centre  $O$  and radius 5

- (a) Write down the cartesian equation of  $C$ . (1)

The points  $P(-3, -4)$  and  $Q(3, -4)$  lie on  $C$ .

- (b) Show that the tangent to  $C$  at the point  $Q$  has equation  $3x - 4y = 25$  (4)

- (c) Show that, to 3 decimal places, angle  $POQ$  is 1.287 radians. (2)

The tangent to  $C$  at  $P$  and the tangent to  $C$  at  $Q$  intersect on the  $y$ -axis at the point  $R$ .

- (d) Find the area of the shaded region  $PQR$  shown in Figure 2. (4)

---



---



---



---



---











9. (a) Show that the equation

$$5 \sin x - \cos^2 x + 2 \sin^2 x = 1$$

can be written in the form

$$3 \sin^2 x + 5 \sin x - 2 = 0 \quad (2)$$

(b) Hence solve, for  $-180^\circ \leq \theta < 180^\circ$ , the equation

$$5 \sin 2\theta - \cos^2 2\theta + 2 \sin^2 2\theta = 1$$

giving your answers to 2 decimal places. (7)

---

---

---

---

---

---

---

---

---

---

---

---

---

---

---

---

---

---

---

---

---

---

---

---





**Question 9 continued**

Handwritten response area with horizontal lines.

**(Total 9 marks)**

**TOTAL FOR PAPER: 75 MARKS**

**END**

**Q9**

