

Write your name here

Surname

Other names

Centre Number

Candidate Number

Edexcel GCSE

Geography B

Unit 1: Dynamic Planet

Foundation Tier

Tuesday 4 June 2013 – Afternoon

Time: 1 hour

Paper Reference

5GB1F/01

You do not need any other materials.

Total Marks

Instructions

- Use **black** ink or ball-point pen.
- **Fill in the boxes** at the top of this page with your name, centre number and candidate number.
- In Section **A**, answer **ALL** the questions.
- In Section **B**, answer **either** question **5** or **6**.
- In Section **C**, answer **either** question **7** or **8**.
- Answer the questions in the spaces provided – *there may be more space than you need.*

Information

- The total mark for this paper is 53.
- The marks for **each** question are shown in brackets – *use this as a guide as to how much time to spend on each question.*
- Questions labelled with an **asterisk** (*) are ones where the quality of your written communication will be assessed
- The marks available for spelling, punctuation and grammar are clearly indicated.

Advice

- Read each question carefully before you start to answer it.
- Keep an eye on the time.
- Check your answers if you have time at the end.

Turn over ►

P41372A

©2013 Pearson Education Ltd.

6/8/6/5/4



PEARSON

SECTION A – INTRODUCTION TO THE DYNAMIC PLANET

Answer ALL questions.

Topic 1: Restless Earth

1 Look at Figure 1.

1000s feared dead in Japanese Quake

Yesterday afternoon an earthquake measuring 9.0 on the Richter scale hit Japan. The earthquake was followed by a powerful tsunami. Ten metre high waves washed inland destroying entire towns.

Rescue services are struggling to cope, with access to the worst hit areas proving almost impossible. Fires are burning in several cities and a number of nuclear reactors have been damaged causing power shortages.

Figure 1– An article about the Japanese Earthquake of 2011

(a) Using Figure 1, give **two** reasons why this earthquake caused a large loss of life.

(2)

1

.....

2

.....



(b) Using the wordbox, complete the sentences below.

(2)

granite core crust
mantle basalt limestone

The solid outer layer of the Earth is known as the

This includes areas of oceanic plate, made of rock.

(c) Describe **two** ways people can prepare for volcanic eruptions before they happen.

(4)

1

.....

.....

.....

2

.....

.....

.....

(Total for Question 1 = 8 marks)



Topic 2: Climate and Change

2 Look at Figure 2.

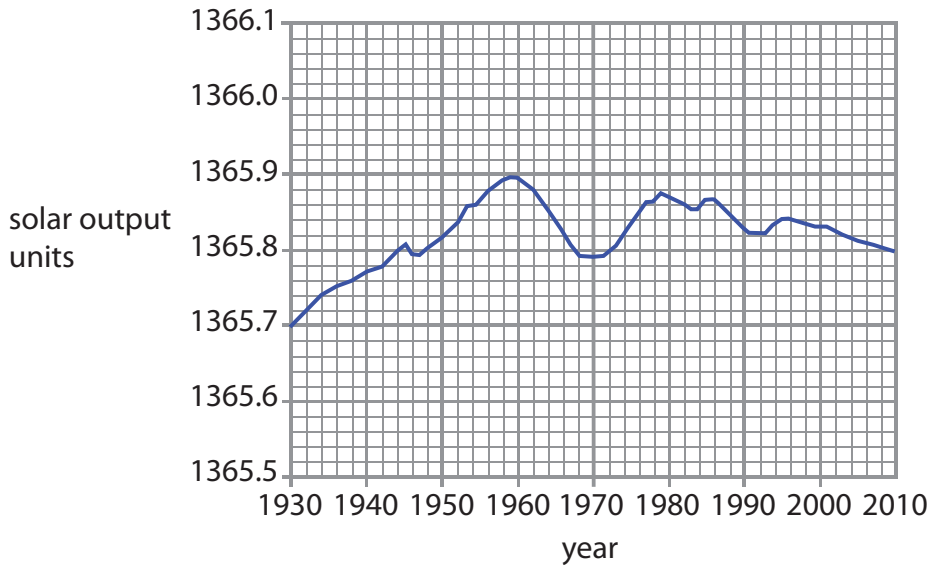


Figure 2 – Changes in Solar Output, 1930 to 2010

(a) Using the wordbox, complete the sentences below.

(2)

increased 1365.8 decreased 1365.5
1365.1 stayed the same

Between 1930 and 1960 solar output

Since 1960 solar output has varied; in 2010 it was



(b) Name **two** greenhouse gases.

(2)

1

2

(c) Describe **two** possible **economic** impacts of climate change in a named developing country.

(4)

Named developing country.....

1

.....

.....

.....

2

.....

.....

.....

(Total for Question 2 = 8 marks)



Topic 3: Battle for the Biosphere

3 Look at Figure 3.

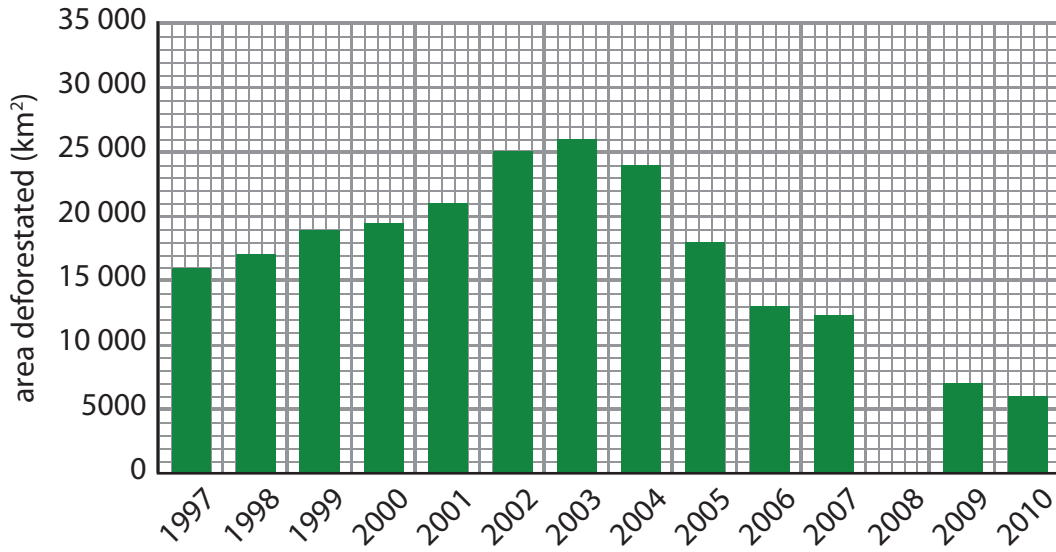


Figure 3 – Deforestation in the Brazilian Rainforest

(a) (i) Complete the bar for 2008.

(1)

Year	Area deforested (km ²)
2008	13 000

(ii) Which **one** of the following statements is true?

(1)

- A** Deforestation has fallen continuously since 2004.
- B** Deforestation reached its peak in 2003.
- C** Deforestation was lowest in 2000.
- D** Deforestation has been steady since 1997.



(b) Other than deforestation, outline **one** threat to the biosphere.

(2)

Chosen threat

.....

.....

.....

.....

(c) Describe **two** different management methods that can be used to conserve the biosphere.

(4)

1

.....

.....

.....

2

.....

.....

.....

(Total for Question 3 = 8 marks)



Topic 4: Water World

4 Look at Figure 4.

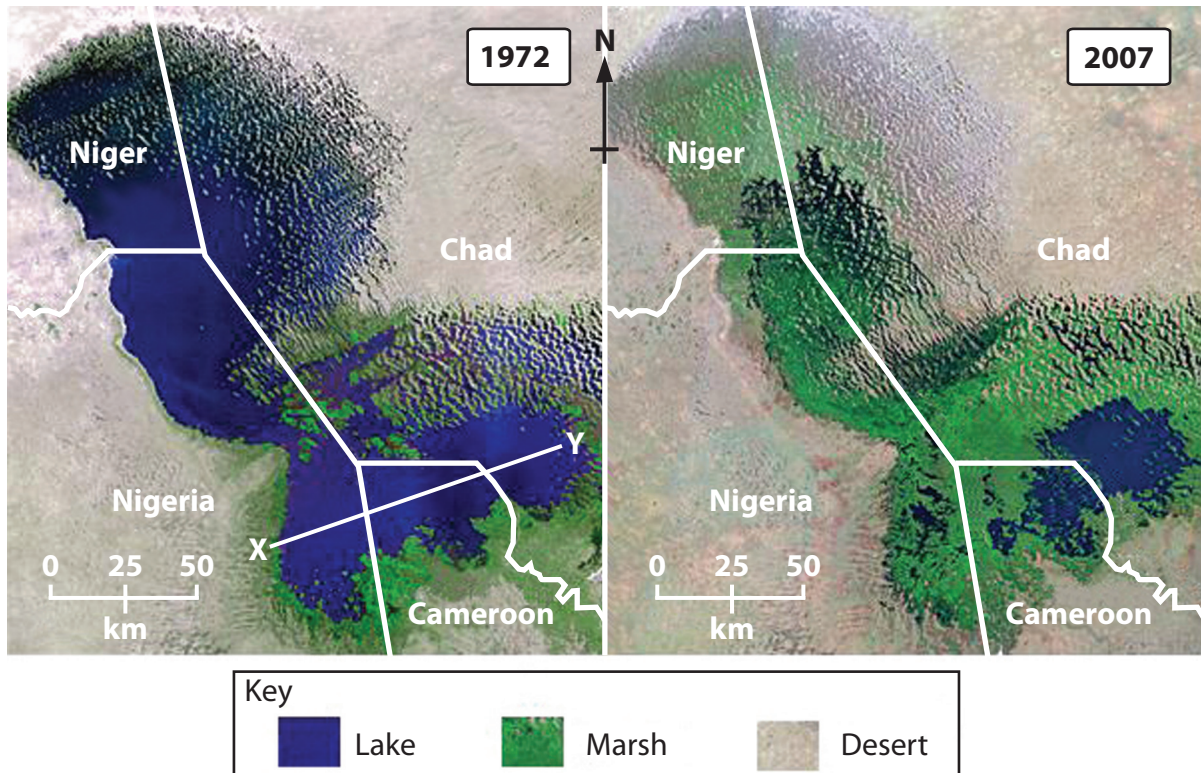


Figure 4 – Satellite images of Lake Chad, West Africa, in 1972 and 2007

(a) (i) What is the distance across the lake between **X** and **Y** in 1972?

(1)

(ii) In 2007, which part of the area shown on Figure 4 had the largest remaining section of Lake Chad?

(1)

- A** south west
- B** south east
- C** north east
- D** north west



(b) Identify **two** human activities that can lead to a decline in water quality.

(2)

1

.....

2

.....

(c) Describe **two** benefits of a named **large-scale** water management project.

(4)

Named project

1

.....

.....

.....

2

.....

.....

.....

.....

(Total for Question 4 = 8 marks)

TOTAL FOR SECTION A = 32 MARKS



SECTION B – SMALL-SCALE DYNAMIC PLANET

Answer ONE question in this section.

Topic 5: Coastal Change and Conflict

If you answer Question 5 put a cross in this box

5 Look at Figure 5.



Figure 5 – Photograph of Coastal Defences

(a) Name **one** type of coastal defence shown.

(1)



(b) Give **two** disadvantages of using hard engineering to manage coastal erosion.

(2)

1

.....

2

.....

*(c) Explain how the processes of weathering and erosion cause coastal retreat.

You may draw a diagram to help your answer.

(6)

.....

.....

.....

.....

.....

.....

.....

.....

.....

.....

.....

.....

(Total for Question 5 = 9 marks)



P 4 1 3 7 2 A 0 1 1 2 0

Topic 6: River Processes and Pressures

If you answer Question 6 put a cross in this box

6 Look at Figure 6.

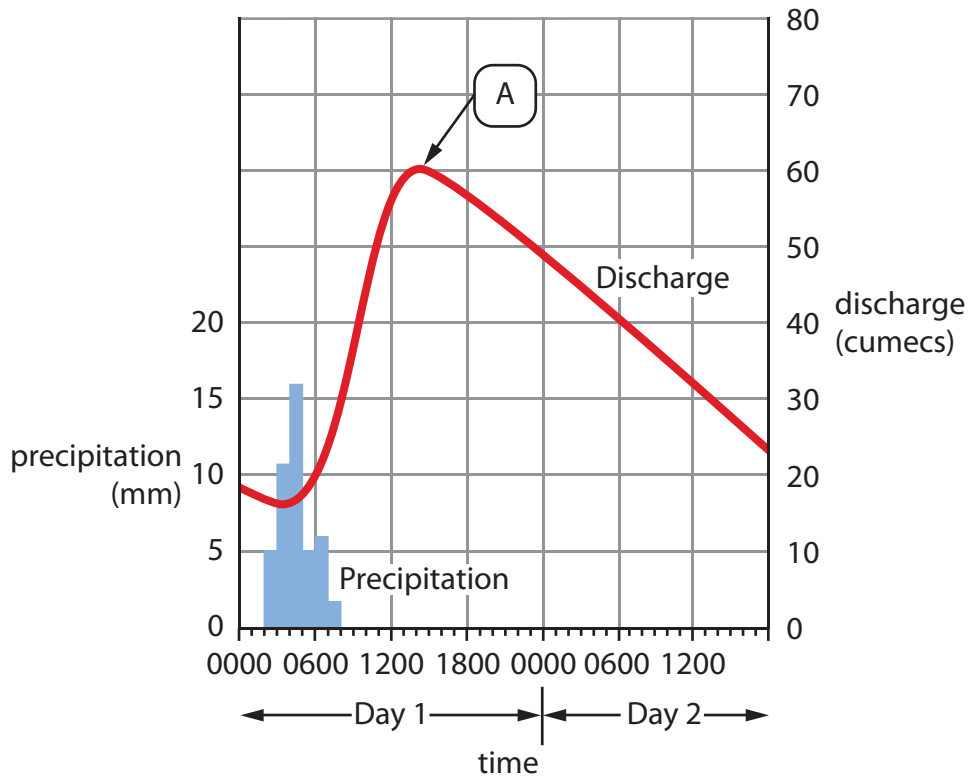


Figure 6 – A flood Hydrograph

(a) (i) Name the flood hydrograph feature labelled A.

(1)

(ii) Describe what happens on **Day 1** between 0000 and 1400.

(2)



*(b) Explain how erosion and deposition can cause a river's channel to change.

You may draw a diagram to help your answer.

(6)

.....

.....

.....

.....

.....

.....

.....

.....

.....

.....

.....

.....

.....

.....

.....

.....

.....

.....

.....

.....

.....

.....

.....

.....

(Total for Question 6 = 9 marks)

TOTAL FOR SECTION B = 9 MARKS



SECTION C – LARGE-SCALE DYNAMIC PLANET

Answer ONE question in this section.

Topic 7: Oceans on the Edge

If you answer Question 7 put a cross in this box

Spelling, punctuation and grammar will be assessed in *(c).

7 Look at Figure 7.

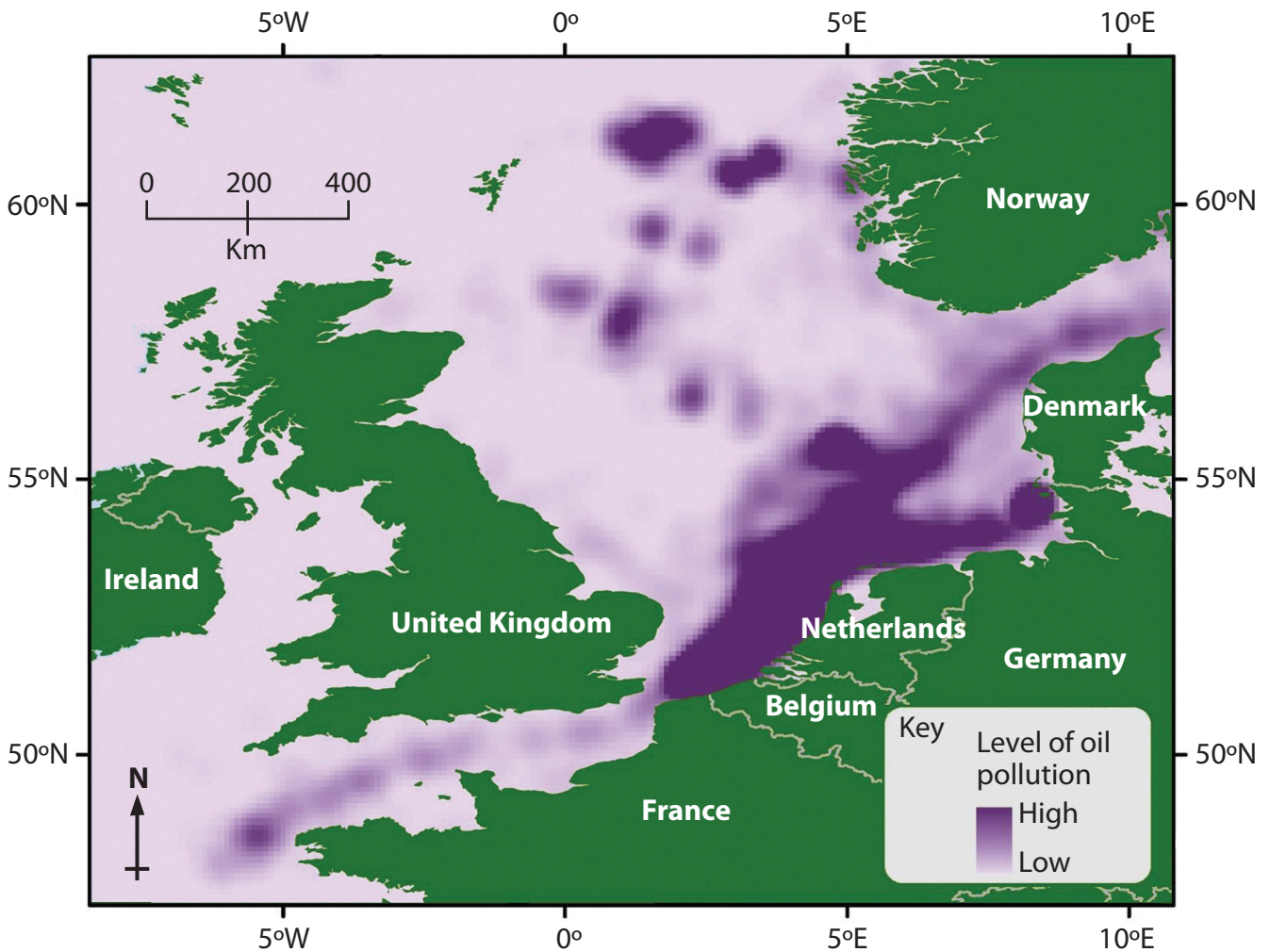


Figure 7 – Levels of oil pollution in the seas around the UK

(a) Which **one** of the following statements best describes the distribution of oil pollution?

(1)

- A It is evenly distributed around the seas of the UK
- B It is mainly within 200 km of the coastlines of Belgium and the Netherlands
- C It is mainly within 200 km of the coast of Norway
- D It is evenly distributed across the eastern half of the map



(b) Other than oil pollution, outline how **one** human activity has damaged marine ecosystems.

(2)

Named activity

.....

.....

.....

*(c) For an area you have studied, explain how marine management measures help to protect the environment.

(6)

Named area

.....

.....

.....

.....

.....

.....

.....

.....

.....

.....

.....

.....

.....

.....

.....

.....

.....

.....

.....

.....

.....

.....

(Total for spelling, punctuation and grammar = 3 marks)
(Total for Question 7 = 12 marks)



Topic 8: Extreme Climates

If you answer Question 8 put a cross in this box

Spelling, punctuation and grammar will be assessed in *(c).

8 Look at Figure 8.

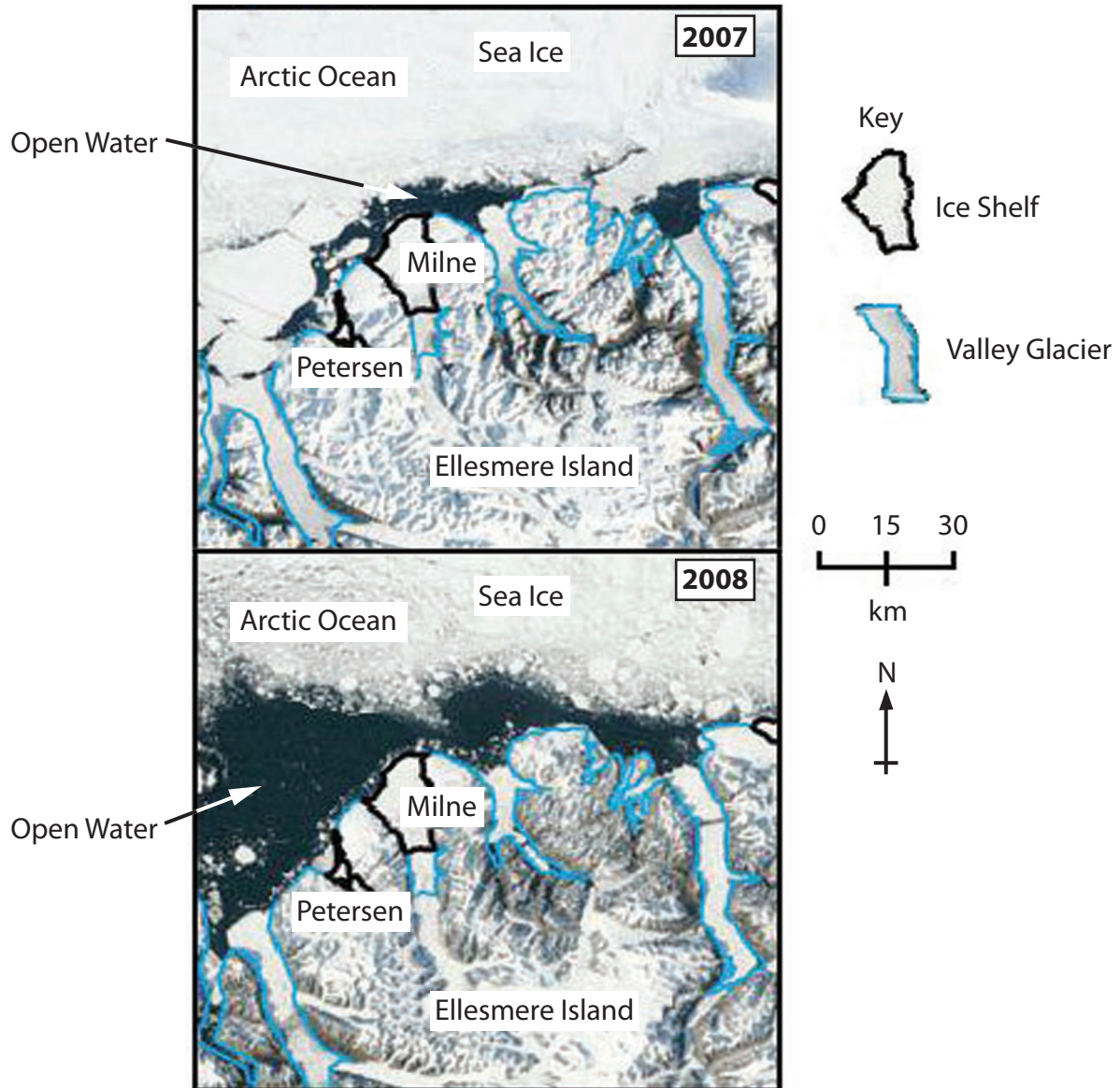


Figure 8 – Changes in the polar environment of Ellesmere Island, Northern Canada

(a) Which **one** of the following statements best describes the changes shown between 2007 and 2008?

(1)

- A** The sea ice has increased everywhere
- B** Both sea ice and glaciers have shrunk
- C** Sea ice has shrunk but glaciers have expanded
- D** All the ice shelves have disappeared



(b) Outline **one global** action that has been taken to protect extreme environments.

(2)

Named global action

.....
.....
.....

*(c) For a named hot arid or polar region, explain the actions taken to help people survive the extreme climate.

(6)

Named region

.....
.....
.....
.....
.....
.....
.....
.....
.....
.....
.....
.....
.....
.....
.....
.....
.....
.....
.....
.....

(Total for spelling, punctuation and grammar = 3 marks)
(Total for Question 8 = 12 marks)

TOTAL FOR SECTION C = 12 MARKS
TOTAL FOR PAPER = 53 MARKS



BLANK PAGE



BLANK PAGE



BLANK PAGE

