

# Pearson Edexcel Level 1/Level 2 GCSE (9–1)

**June 2025**

Period of sustained focus: 10 hours

Paper  
reference

**1AD0/02**

## **Art and Design** **COMPONENT 2: Externally Set Assignment**

**You do not need any other materials.**

**The paper must not be released to teachers or candidates until 2 January 2025.**

The paper will also be available on the Pearson Edexcel website from this date.

### **Instructions to teachers**

The paper may be given to candidates any time after **2 January 2025**, at the centre's discretion. Candidates then undertake investigations and development under informal supervision. There is no prescribed time limit for the preparatory study period.

The final ten-hour period of sustained focus may take place over multiple sessions (a maximum of four within three consecutive weeks) and is conducted under formal supervision. The ten-hour period of sustained focus should not include teacher direction, demonstration, preparation of workspaces or materials, clearing or storage of work.

### **Instructions to candidates**

This paper contains the theme and suggested starting points to be used in the preparatory study period and the period of sustained focus. You are advised to read the whole paper.

This paper contains the Externally Set Assignment for the following:

1AD0/02	Art, Craft and Design
1FA0/02	Art and Design (Fine Art)
1GC0/02	Art and Design (Graphic Communication)
1TE0/02	Art and Design (Textile Design)
1TD0/02	Art and Design (Three-dimensional Design)
1PY0/02	Art and Design (Photography)

Turn over ►

**P75835A**

©2025 Pearson Education Ltd.  
1/1/1/1/1/1



  
**Pearson**

## **Candidate guidance**

Your teacher will be able to teach, guide and support you as you prepare your personal response. You may also complete preparatory work without direct supervision.

### **The preparatory study period**

The preparatory study period begins when you receive this paper and continues up until the start of the period of sustained focus.

You should develop your response to the theme in a personal and creative way, developing, refining and recording your ideas towards the final outcome(s).

### **The period of sustained focus**

The period of sustained focus consists of **ten hours** working under supervised examination conditions in an appropriate studio setting. Teachers will be able to support you with matters such as working space, materials and equipment. However, teachers will not be able to give you feedback about your work in progress or suggest how you might improve or develop your outcome(s).

During the ten-hour period of sustained focus, you will produce your final outcome(s), based on your preparatory studies, in response to the Externally Set Assignment theme. The period of sustained focus may take place over more than one session. You will not be able to access any of your work outside of these sessions. Once the ten-hour supervised sustained focus period has ended, you will not be able to add to or alter any of your work.

Your teacher will inform you of the dates and times when you will complete your ten hours of unaided work for the Externally Set Assignment.

**The Externally Set Assignment is worth 40% of the GCSE.**

## Exploring and developing the theme

Your work for this Externally Set Assignment should be based on the theme given in this paper.

The theme this year is:

### Gathering

You should discuss your ideas with your teacher before deciding how to respond to the theme. Your work will be marked according to how well you have shown evidence of the four Assessment Objectives.

The four Assessment Objectives are:

- develop ideas through investigations, demonstrating critical understanding of sources
- refine work by exploring ideas, selecting and experimenting with appropriate media, materials, techniques and processes
- record ideas, observations and insights relevant to intentions as work progresses
- present a personal and meaningful response that realises intentions and demonstrates understanding of visual language.

You should use the knowledge, skills and understanding you have learnt to show your progression along your creative journey.

### Suggested starting points

The starting points on the following pages are suggestions to help you think about possible ideas, ways of working and your personal creative approach to this year's theme. You should read through **the whole paper** before you start your preparatory work, as any section may provide you with ideas.

You may prefer to use a starting point of your own and explore and respond to other artists, designers and/or craft workers to help you develop your response to the theme '**Gathering**'.

Further contextual references can be found at:

<https://qualifications.pearson.com/content/dam/pdf/GCSE/Art%20and%20Design/2016/teaching-and-learning-materials/art-and-design-gcse-and-a-level-contextual-references.pdf>

## Gathering – people

People gather together at public events such as music festivals, weddings, sporting tournaments and demonstrations.

The artist **Mary Kuper** has captured the crowds gathering to watch the carnival procession pass by.



**Mary Kuper**  
*Carnival, Ladbroke Grove, 2017*  
ink drawing

Families and friends gather to spend time with each other.

In this lino print by **Ethel Spowers**, a group of people stand close to each other to share a joke and a laugh.

Artist **Carlton Murrell** has painted a small gathering of friends as they play in the park.



**Ethel Spowers**  
*The Joke*  
lino print



**Carlton Murrell**  
*Fun in the Park*  
painting

We can gather together items such as concert tickets, photographs and other memorabilia in albums and scrap books.

People who gather together can often be identified by their uniforms or outfits.

The photograph shows a group of football players participating in a huddle before playing in their match.



*Women Soccer Players*  
photograph

Hair can be twisted together to form plaits, braids and loops.

This black and white photograph by **Angèle Etoundi Essamba** focuses on the braided hair of two people positioned close together.



**Angèle Etoundi Essamba**  
*Double Dos, 2002*  
photograph

People stand in line and queue or sit in a waiting room.

**Here are some other suggestions that may stimulate your ideas:**

- assembly
- party
- game
- audience
- procession

Using one of the above starting points, or starting points of your own, develop your ideas to produce a personal response to the theme '**Gathering**'.

## Gathering – human-made

Objects can be designed to be assembled from different component parts.

The nest of tables created by **Giotto Stoppino** are stacked precisely together for storage.



**Giotto Stoppino**

*Orange nesting plastic tables*  
three-dimensional design

Ribbons, zips, buttons and bows are all used to fasten or decorate items of clothing.

In this photograph, a model is wearing a dress embellished with bows designed by **Paul Babb** and **Pamela Proctor**.



*Twiggy wearing dolly dress with pink ribbons, February 17, 1967*  
photograph

Socks and gloves are folded together.

Lacing is used to tie things together, including shoes, boots and corsets.

Craftspeople, builders, chefs, florists and dentists gather the equipment they need before starting work.

This drawing by **Alan Byrne** shows sharpened pencils ready for use.



**Alan Byrne**  
*Coloured pencils in a jar*  
drawing

Objects grouped together create repetitive patterns.

In this screenprint by **Andy Warhol**, the identical bottles of coca cola are lined up on shelves.

In the photograph by **Graeme Harris**, the cutlery is haphazardly thrown together.



**Andy Warhol**  
*Green Coca-Cola Bottles*  
screenprint



**Graeme Harris**  
*Silver Spoons and Forks*  
photograph

Cupboards, drawers and boxes are all commonly used for storing objects.

**Here are some other suggestions that may stimulate your ideas:**

- suitcase
- wardrobe
- tassels
- bundle
- bunting

Using one of the above starting points, or starting points of your own, develop your ideas to produce a personal response to the theme '**Gathering**'.

## Gathering – environment

Car parks, bike racks and train terminals are all places where you find modes of transport gathered together.

In the photograph by **Cassio Vasconcellos**, cars are parked in rows in a car park.



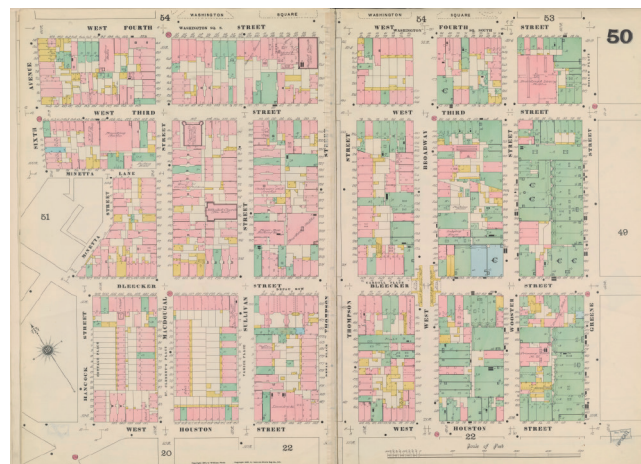
**Cassio Vasconcellos**  
*Cars*  
photograph

An open air or indoor theatre is designed to create spaces for people to gather.

The circular form in the design of the Roman Amphitheatre creates a space for people to meet.



*View of Roman Amphitheatre, Nimes, France*  
architecture/three-dimensional design



*Map of Manhattan*  
print

Cities, towns and villages are made up of contrasting architectural structures.

The *Map of Manhattan* shows the carefully aligned buildings arranged on a traditional grid plan, which gives the city a sense of order, symmetry and pattern.

Tower blocks provide many homes within one building and terraced housing links homes in a row.

A street is made up of a variety of buildings.

The drawing together of curtains can create a private space and change the light in the room.

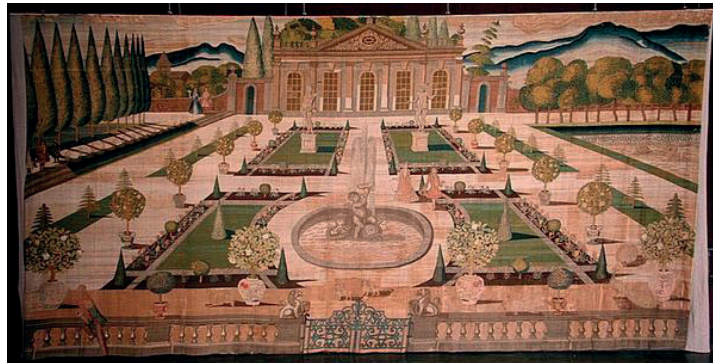
In the painting by **Mike Silva**, the figure pulls the curtain across the window.



**Mike Silva**  
*Jason (Curtain)*  
painting

Garden designers group plants together to create an attractive colour scheme.

The tapestry, made by a group of artists, illustrates the layout of a garden, showing the carefully designed planting in different areas.



**English school**  
*Stoke Edith Hanging*  
textile design

The kitchen is often where people prefer to gather in a home.

**Here are some other suggestions that may stimulate your ideas:**

- camping
- garden shed
- festival
- airport
- bus station

Using one of the above starting points, or starting points of your own, develop your ideas to produce a personal response to the theme '**Gathering**'.

## Gathering – natural world

Crops grow in fields ready to be harvested on a dry summer's day.

In the printed fabric design by **Edmund Hunter**, the wheat sheaves are stylised and combined with images of field mice to create a repeating pattern.



**Edmund Hunter**  
*Wheat Sheaves*  
textile design

Farm animals are gathered in for a variety of reasons, such as shearing, milking, feeding and shelter.

A working dog can be used to herd in livestock. The painting by **Chokha** shows cows being brought in after a day spent grazing.



**Chokha**  
*Krishna*  
painting

Flowers are picked to be made into bouquets, posies and wreathes. Gathered flowers and leaves form part of many traditional dance costumes.

Some flowers and plants can grow in small clusters.

**Sojung Lim**'s intensely coloured photograph of the hydrangea flower focuses on the cluster of petals.

When bees swarm they gather around the queen to protect her and then move on to find a place to make a new hive. The sculpture shows two bees resting.



**Sojung Lim**  
*Mikrokosmos*  
photograph



**Mandalay Made**  
*Bee*  
three-dimensional design

Changes in the weather can cause storms to gather.

In her painting, **Kathy Ramsay Carr** uses dynamic brush strokes to show the tumultuous clouds and swell of the waves as the storm approaches land.



**Kathy Ramsay Carr**  
*The Gathering Storm*  
painting

Sand dunes and snow drifts are created by winds blowing across the landscape.

**Here are some other suggestions that may stimulate your ideas:**

- copse
- seed pod
- nest
- shoal
- sheaf

Using one of the above starting points, or starting points of your own, develop your ideas to produce a personal response to the theme '**Gathering**'.

**BLANK PAGE**

**Acknowledgements**

- © Mary Kuper/Bridgeman Images
- The joke. Ethel Spowers (1890–1947)
- © Carlton Murrell. All Rights Reserved 2024/Bridgeman Images
- © Lighthouse Films/Getty Images
- © Bridgeman Images
- © NPL - DeA Picture Library/Bridgeman Images
- © Bridgeman Images
- © Alan Byrne. All Rights Reserved 2024/Bridgeman Images
- © Fine Art Images/© 2024 The Andy Warhol Foundation for the Visual Arts, Inc./Licensed by DACS, London/  
Bridgeman Images
- © Graeme Harris. All Rights Reserved 2024/Bridgeman Images
- © Cassio Vasconcellos. All rights reserved 2024 / Bridgeman Images
- © SGM/Bridgeman Images
- © Bridgeman Images
- Jason (Curtain) © Mike Silva/Tate Gallery
- © The Stapleton Collection/Bridgeman Images
- © Edmund & Alec Hunter Collection/Bridgeman Images  
<https://collections.vam.ac.uk/item/O120505/krishna-painting-chokha/>
- © Sojung Lim. All rights reserved 2024/Bridgeman Images  
<https://collections.vam.ac.uk/item/O54205/bee-figure/>
- © Kathy Ramsay Carr. All rights reserved 2024 / Bridgeman Images