

# Component 2 Photography

## Standard Mark – 41

Performance Level 4: Competent and Consistent

	AO1	AO2	AO3	AO4
Mark	10	10	12	9
Performance Level	4	4	4	3
	Just competent and consistent ability	Just competent and consistent ability	Fully competent and consistent ability	Fully emerging competent ability

Keywords from the taxonomy:  
**Skilful**

# Moderator commentary

This Photography Component 2 submission consists of an A3 sketch pad, two A2 sheets of supporting studies and an A2 sheet with three A4 printed outcomes completed during the 10-hour period of sustained focus. Images of the work selected here reflect the characteristics of work just within Performance Level 4, Competent and Consistent, with a mark of 41/72. The strength of the submission lies in Assessment Objective 3, Record.

In response to the Externally Set Assignment theme of 'Power', the candidate explores the sub-themes of the 'power of nature,' 'power of engineering,' and 'power of machinery'. A visual mind map is created, incorporating the work of several photographers who relate to these themes, including contemporary nature photographer George Wheelhouse, industrial photographer Paul Worpole, and agricultural photographer Neil Moore.

The candidate begins their investigation by analysing George Wheelhouse's nature photographs of longhorn cows, focusing on his use of contrasting light and black backgrounds to create dramatic, powerful images. Inspired by this work, the candidate takes their own photographs of cows, using Nik Colour Efex Pro 4 to skilfully digitally enhance the images. In their annotation, the candidate writes: "I took the photos at an angle where the cow was slightly higher than the camera and looking down, showing its powerful stance."

Continuing this investigation, the candidate explores Neil Moore's agricultural machinery photographs, responding with a photoshoot of tractors taken from various angles and viewpoints. Using Lightroom, the candidate enhances these images through experimentation with saturation, contrast, and definition.

The candidate then explores the 'power of machinery' by studying Paul Worpole's industrial collection, which features images of human interaction with power tools. In response to Worpole's photograph of a man using an angle grinder, the candidate annotates: "Worpole has created an image that stands out, with the main colours being saturated blue and orange. He has used vignetting to focus on the centre of the photo." The final photoshoot produces additional, skilful digital photographs, which inform and refine images for the candidate's final realisation.

The final 10-hour period of sustained focus concludes with three A4 photographic outcomes presented on an A2 sheet, which consolidate the ideas explored throughout their investigation. The influence of George Wheelhouse and Paul Worpole's photographic techniques and subject matter is clearly evident in these final outcomes.

For the submission to move more securely into Performance Level 4, Competent and Consistent, the candidate would need to demonstrate a deeper level of engagement and experimentation throughout the creative journey, as well as further refinement in the final outcomes when compared to the supporting studies.



Keisha  
Scarville

Power of colour



Power of Nature

Tim Booth



Dorothea  
Lange



George  
Wheelhouse

# POWER

Power  
of  
Nature



Power in  
Engineering



Paul  
Worpole

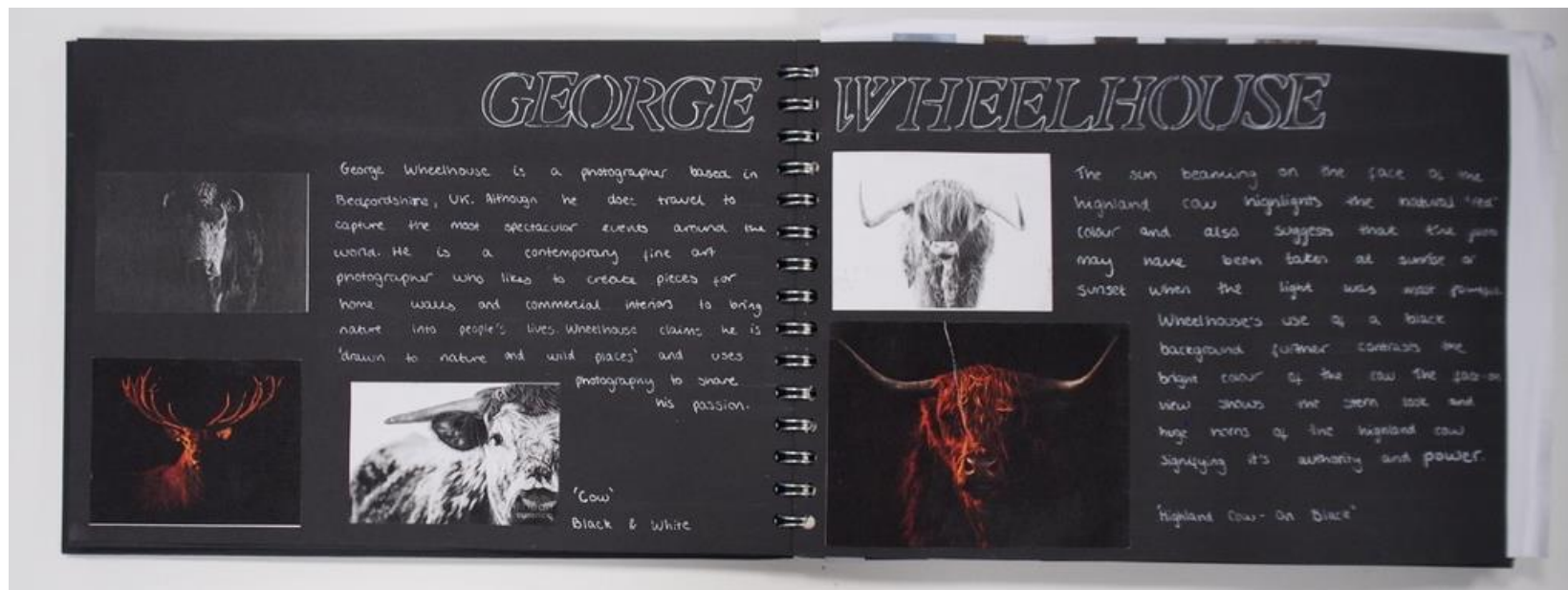


Four  
Wheels  
Photography

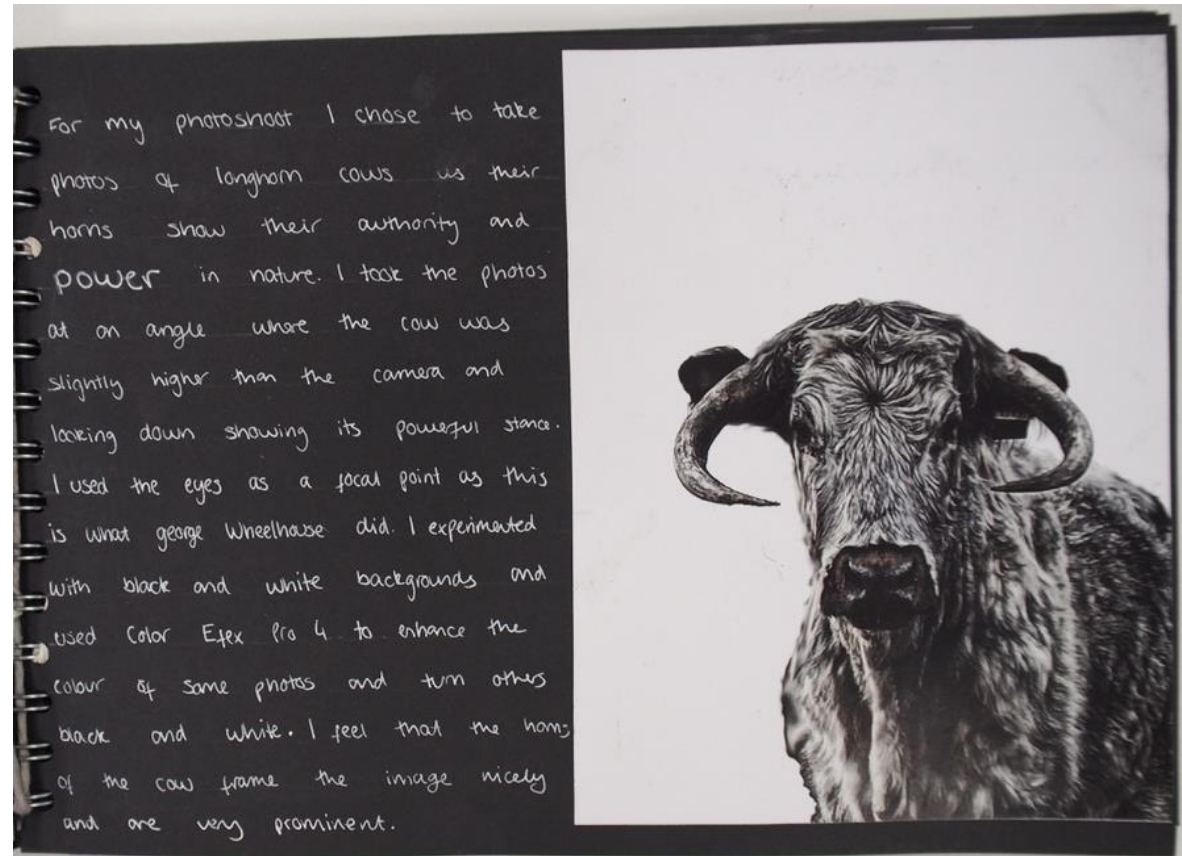


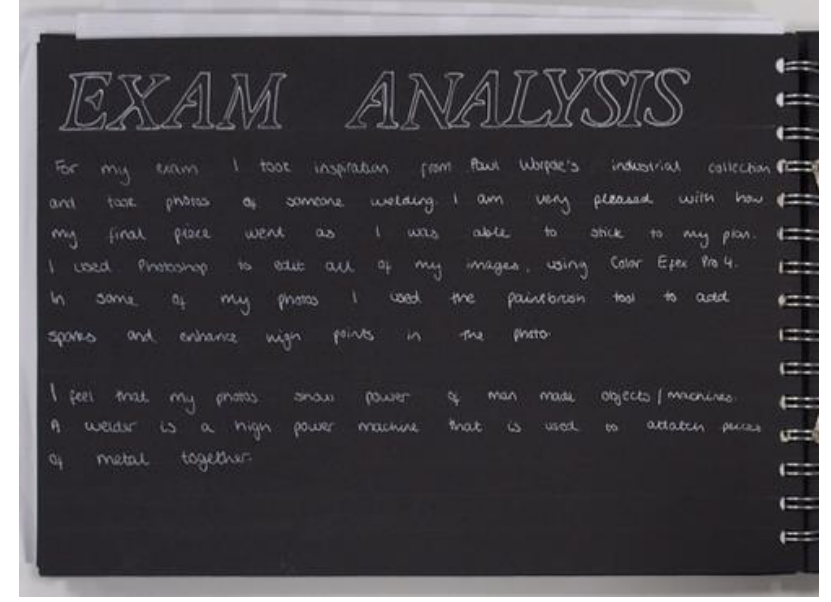
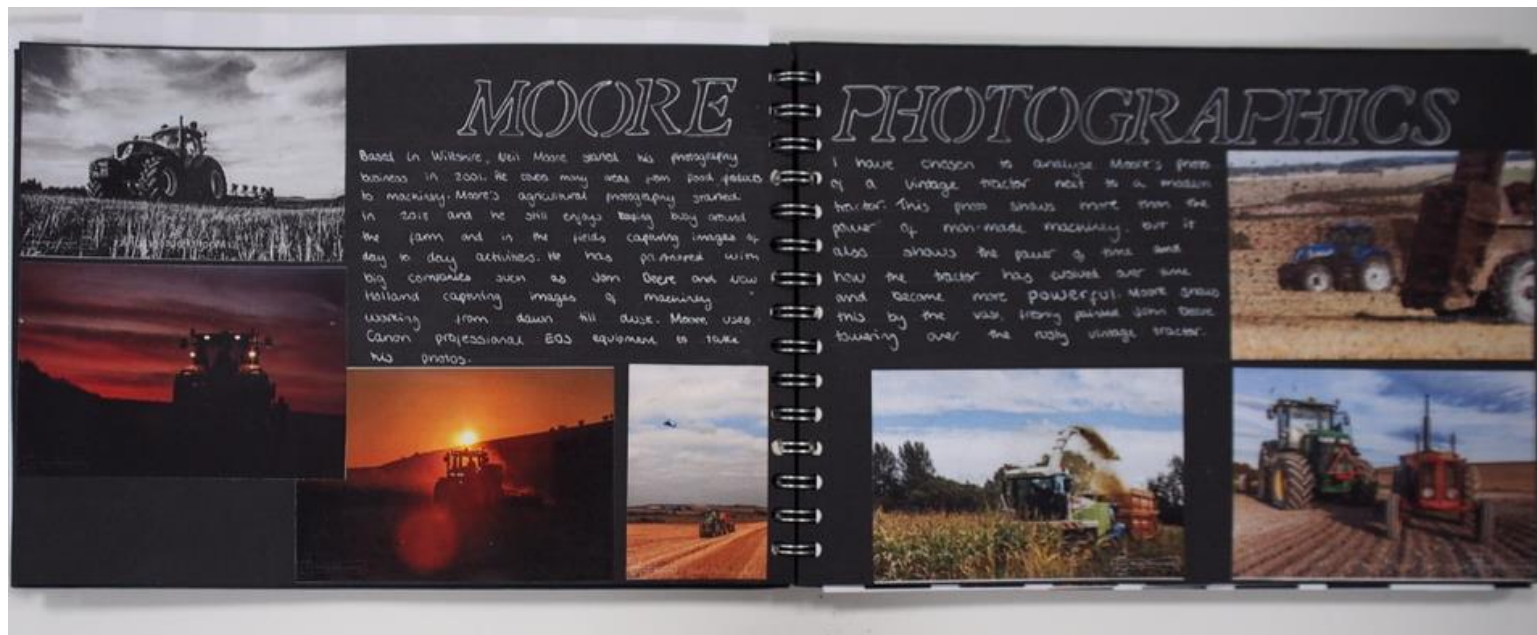
The Power  
of  
Machinery













# PAUL WORPOLE

Paul Worpole is a British photographer with over 15 years experience. He specialises in headshots but I have chosen to take inspiration from his industrial photography. On his website, he states that 'It's not just about machinery and metal; it's about finding art in the

everyday grind.' He plays around with light and angles to make the industrial landscape come alive.



I like this image because of the bold colours due to the technique he has used. I will try to recreate this effect by using similar techniques to Paul Worpole.

This image is titled 'Creative Sparks' and is from Worpole's collection of industrial photography. It shows someone using an angle grinder with the sparks flying across the right hand side of the image. Worpole has created an image that stands out as the main focus, focused on in this photo are blue and orange which are contrasting colours. The photo is very saturated and vibrant and he has used vignetting to focus on the centre of the photo.



# RESPONSE

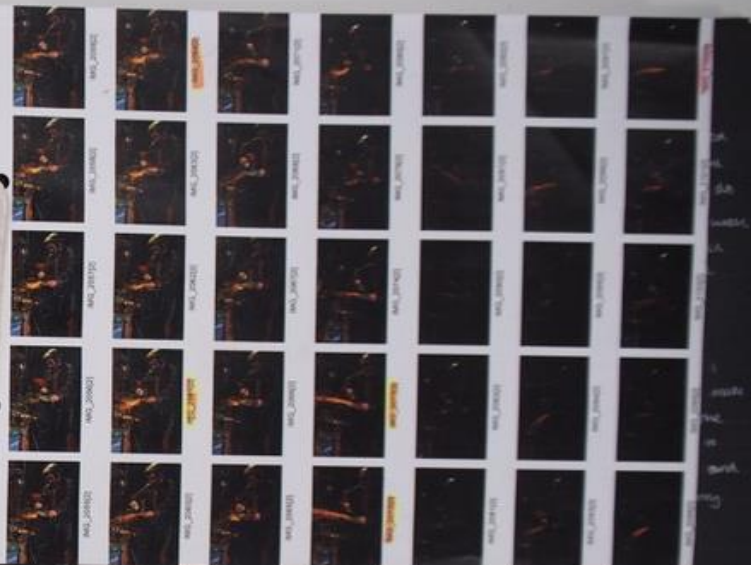


After editing my photos, I presented them on a board. I chose the title 'engineering' as my photos do show power within engineering as well as man-made power and electrical power. I chose to put my three best photos on the board.

I am pleased with how my photos turned out however if I were to do it again I would make them slightly brighter around the border while being careful not to brighten the centre too much and rise the sparks appearing along

# PAUL WORPOLE

For my response to Paul Worpole's industrial photography I took photos of someone using an angle grinder. This shows man-made electrical power because the battery generates power to enable the disk to spin to round sharp edges on metal. When I took these photos I wanted the sparks to be the focus of the image so I lowered the exposure on my prime camera so that the bright sparks stood out. I edited the photos using Photoshop → Nix collection → Colour Efx Pro. When I edited the images I wanted to use similar techniques to Paul Worpole so I kept the centre bright while darkening the border. I increased the contrast which gave the sparks more definition.









# ENGINEERING

