

Component 2 Fine Art

Standard Mark – 49

Performance Level 4/5: Competent and Consistent/Confident and Assured

	AO1	AO2	AO3	AO4
Mark	11	12	14	12
Performance Level	4	4	5	4
	Mostly competent and consistent ability	Fully competent and consistent ability	Mostly confident and assured ability	Fully competent and consistent ability

Keywords from the taxonomy:
Focused

Moderator commentary

This Fine Art Component 2 consists of an A4 sketchpad, several mounted preparatory outcomes and an A3 mounted dry-point etching completed in response to the Externally Set Assignment theme of 'Power'. Images of the work selected here reflect the characteristics of work within Performance Level 4, Competent and Consistent and Performance Level 5, Confident and Assured, with a mark of 49/72.

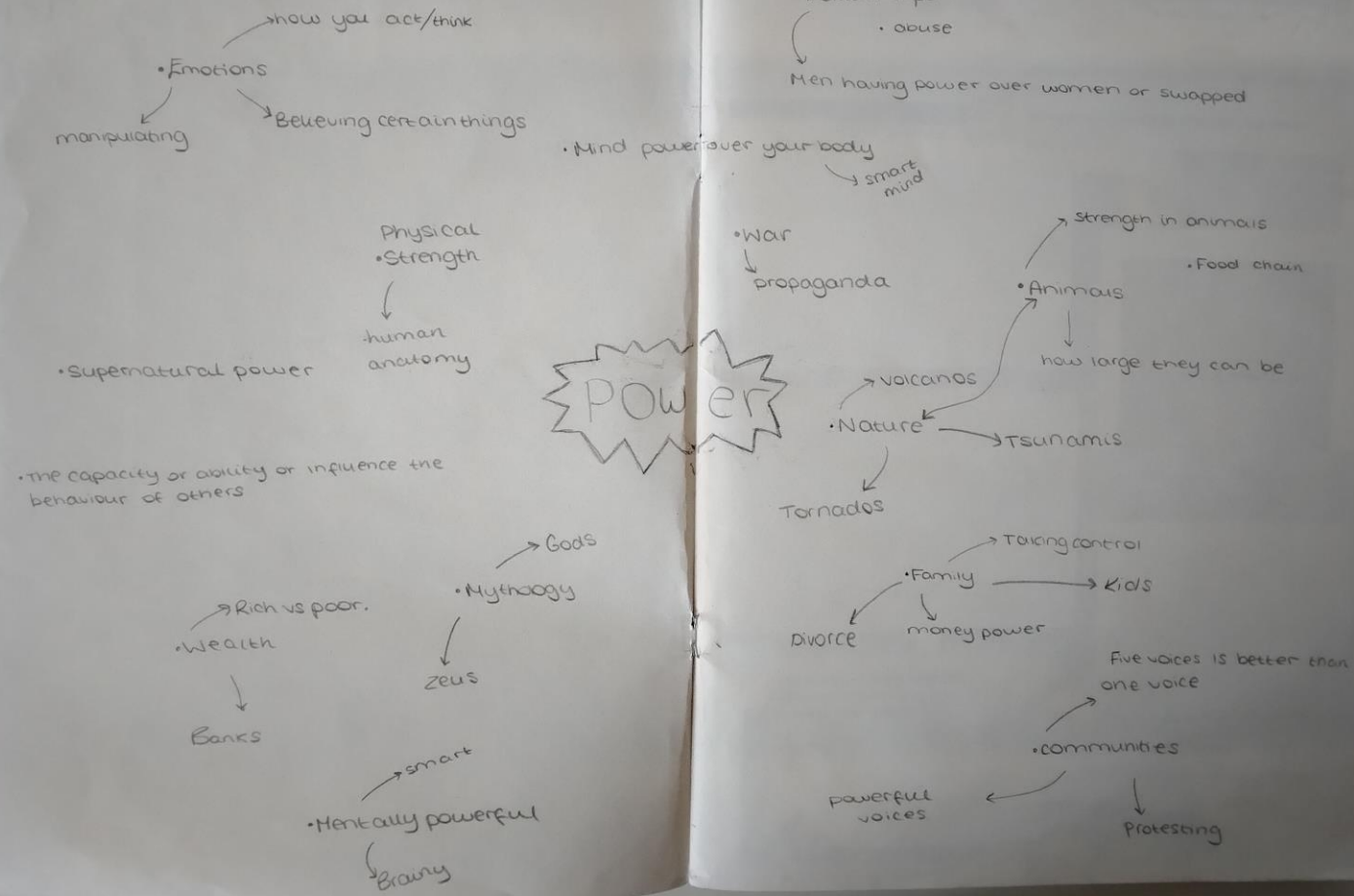
A mind-map and accompanying page of secondary source imagery enable the candidate to establish initial ideas. A sub-theme of 'Power in Animals' is selected, and the work of American photographer Joel Sartore is thoughtfully referenced. A visit to the Natural History Museum in London, to see the 'Wildlife Photographer of the Year' exhibition, engages and informs the candidate's interest. They securely annotate: "Power in animals can manifest in various forms including physical strength, agility, speed, intelligence, social dominance and adoptive abilities".

Ideas are refined through a drawing of a bald eagle, where they record observations in a skilful way, focusing on the power of the bird of prey's beak and eyesight. Inspired by the Fauvist palette of German painter Franz Marc, they add colour to a photocopy of their drawing, as a way of highlighting the bird's physical powers. The use of dry-point etching, line and tonal drawing is a key element of the candidate's purposeful technical explorations.

Through a cohesive body of preparatory work that includes A2 collages, the candidate considers the concept of mythological creatures: dragons, griffins and cockatrices, creating a drawn hybrid of animal powers. Ideas are further refined through a genuine engagement in Heraldry and family crests, referenced with the medieval fascination with bestiary. Plans are made to create an A3 etching that combines ideas elements of mythological creatures, within a heraldic shape.

An A3 dry-point etching is skilfully created and printed during the 10-hour period of sustained focus, consolidating ideas and concepts in an informed way. A circle is a motif that is revisited throughout this component, to "emphasise the power contained within both human and animal families".

In order for the submission to move more securely into Performance Level 5, the candidate could show greater evidence of how the links and connections with relevant source material have informed their sustained journey in a more perceptive way. Further risk-taking across a range of media would reflect a more comprehensive approach to refining and exploring ideas and techniques.





cornelia parker
• cold dark matter: An exploded view installation



Gustave Courbet
• The Desperate Man



Katsushika Hokusai
• The Great Wave off Kanagawa woodblock print



Antony Gormley
• Angel of the Noah sculpture



Japanese school
• Sumo wrestlers



Alighiero Boetti



• Happa



Nicola Hicks
Giant Beetle sculpture



WILD LIFE



urs Haunstein

•Harpy Eagle

Some animals and birds demonstrate their power when catching prey. In this photograph, the vibrant red draws our attention to the sharp hooked beak.



I have chosen to do wildlife and the natural world, the power that animals hold.

- Speed
- Strength
- Hunting

Also the power of their beauty.

NATURAL

WORLD



The other choice was the natural world.

- Tsunamis
- Volcanos
- Tornados
- Earthquakes

Our Earth has immense power over us, it comes unexpected at times which catch us out.



Power in Animals

Power prevades every aspect of the social life of animals: what they eat, where they eat, where they live, whom they mate with, how many offspring they produced.

Power in animals can manifest in various forms, including physical strength, agility, speed, intelligence, social dominance, and adaptive abilities.

Some animals wield power through sheer size and strength, while others rely on cunning strategies or cooperative behaviour within their social groups.



Power in a poisonous frog lies in its ability to defend itself from predators using chemical defenses. These frogs often have brightly colored skin patterns to warn potential predators of their toxicity. Despite their small size, they can deter larger predators through the potent toxins secreted through their skin, making them formidable force in their ecosystem.

Artists might use the vibrant hues and intricate patterns of these frogs to symbolize themes such as danger, protection, resilience and beauty in the face of adversity.



The power in a bird's beak lies in its remarkable versatility and adaptability. Depending on the species, a bird's beak can be

specialized for a wide range of functions; including capturing and eating prey, cracking open seed & nuts, building nests, preening feathers and defending against predators or rivals.

The beak is a highly effective tool for survival in its environment.

Artists use birds as they can carry deeper symbolic meanings beyond their physical attributes. With their ability to fly, are often associated with freedom, transcendence, and spiritual elevation.

Birds' roles in various mythologies, folklore, and religious beliefs further amplify their symbolic power in art.

Animal prints hold significance in various aspects of human culture. In fashion, they use animal prints to add a bold and exotic touch to clothing.

Animal prints can symbolize traits related with the animals they mimic. E.g. leopard prints evoke notions of stealth and sensuality, while a zebra prints can symbolize unity or balance.

A psychological impact can be that exposure to animal prints can evoke primal instincts and emotions.

Animal prints play a multifaceted role in human culture, influencing fashion trends, symbolizing cultural values and contributing to aesthetic expressions in aspects of daily life.





Joel
Sartore

He wants
to get the
public to
care and

Save Species
from extinction. 4 times
chased by grizzlies

cheetahs are iconic & charismatic animals, although they are facing numerous threats, by poaching.

photographing a cheetah allows Sartore to capture the essence of grace and speed in a single frame. The sleek lines of the cheetah's body, coupled with its intense gaze and powerful presence, which creates a dynamic composition that evokes a sense of awe and admiration. He invites viewers to connect with the spirit of this magnificent creature and reflect on the fragility of our world.

Joel Sartore's Photo Ark project aims to document thousands of animal species in captivity to raise awareness about conservation and biodiversity. Starfish are fascinating and diverse creatures found in oceans worldwide, facing threats such as habitat destruction, pollution, and climate change. By photographing a starfish, Sartore highlights its unique characteristics and contributes to the broader mission of the Photo Ark by showcasing the beauty and importance of marine life.

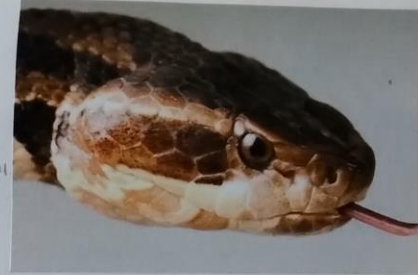


By photographing a starfish, Sartore highlights its unique characteristics and contributes to the broader mission of the Photo Ark by showcasing the beauty and importance of marine life.

15,325 species
photographed

300 talks given
worldwide

"A modern-day Noah"



Through the sinuous curves and hypnotic patterns of the snake's scales, Sartore invites viewers into a realm where fear and fascination intertwine. The snake has long been a potent symbol across cultures, representing renewal, transformation.

By capturing the sinuous form and piercing gaze of a snake, Sartore prompts viewers to confront their primal instincts and confront their fears. He challenges people to transcend an instinctual aversion and embrace a deeper understanding and appreciation for all life forms, regardless of their perceived threat or danger.

Placing the spider in the center with its legs spread out may be a deliberate artistic choice to showcase the intricate details of the spider's body and highlight its unique features. It also creates a visually striking composition that draws attention to the subject.



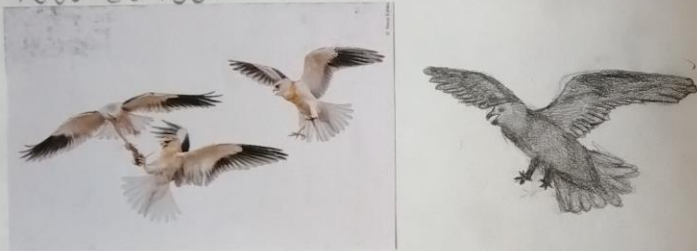
It can symbolize a sense of vulnerability and exposure. Encouraging to have a deeper appreciation for the beauty and complexity of these often misunderstood creatures.

National History Museum

wildlife photographer of the year exhibition.

I wanted to explore the power of animals further and begin to consider how this influences us. This exhibition highlights the different powerful qualities of a variety of animals.

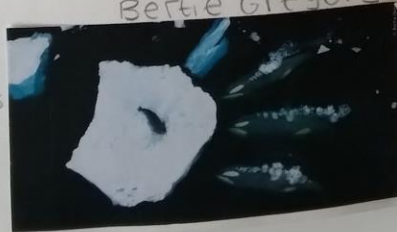
YOSSI ESHBOL



Here are two black-winged kites fighting over prey.

There are many ways people fight for some form of power.

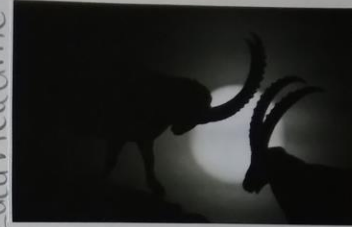
Here the whales are hunting in a pack for a seal. Sometimes to require power, we must work as a team.



Bertie Gregory

Goats symbolise
→ strength
→ resistance/opposition
although they are quite stubborn.
Modern day people call their 'idols' goats, its an acronym for greatness.

Luca Heicorne



Olivier Gonnet



In this photo Gonnet captures a lioness defending her cub from a buffalo. A lioness is seen as a symbol of strength & beauty. They are fierce defenders and expert hunters. The name lioness has been adopted by the women's national football team in England.

this is because they admired the qualities associated with a lioness.

Nesib Ahmed



I chose this photo because it shows how we both admire and fear the powers of animals.



This drawing of a bird links to my theme of power in animals. It is focused on the beak and eye which is the strongest part of the bird as the beak kills and a bird's eye sight is essential to stalking prey. I used the grid method which was useful when it came to tone and finding the highlights in the image.



I wanted to add colour to the birds beak and eye to emphasise how powerful they can be and to draw peoples attention closer to those two aspects of the bird. The colour also helps to define the subtle markings that make a difference.

I used a range of colours, such as : yellow, orange, dark orange, a light red mixed with orange hints, a darker red and a brown.

I feel adding colour to a bird brings them to life and it broadens my artistic abilities.

using yellow and orange can symbolize warmth and vibrancy but it can also bring in various aspects of nature, such as the sunlight and joy which can add depth and meaning to an artwork.

It can create a visually striking and emotional resonant portrayal, it engages viewers and invites them to connect with the beauty and wonder of the avian world. which links back to my idea on how animals can portray power in many ways.





49 marks - 1FA0 C2



49 marks - 1FA0 C2

FRANZ MARC

8 February 1880 - 4 March 1916

He was a German painter and print maker. Marc saw nature as a form of spiritual redemption. He was painting while he was on the front line in WWI.

It was understandable that it was animals that touched his "true feelings" in a world in which men were intolerably violent.



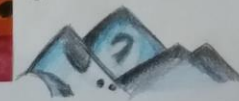
He aimed to convey emotions and ideas through vivid colours and bold forms rather than realistic representation.

Deer were emblematic of innocence, grace and freedom in Marc's artistic vision.

He had been exploring the themes of companionship, harmony, and the interconnectedness of animals and human beings.



For Marc, different hues evoked gender stereotypes: yellow, a "gentle, cheerful and sensual" color, symbolized femininity while blue representing the "spiritual and intellectual" symbolized masculinity.



↳ The blue mountains are an abstract self-portrait.



It is a private wedding photo

↑ The prowling yellow cat, as a symbol of the female principle, may be a veiled depiction of Maria Franck.

Blue typically represents spirituality, tranquility, and a connection to the divine or mystical realms

The two interlink:

Horses are seen as powerful animals and are symbolized as spiritual and elegant. Using blue, it perfects one another.





My etching



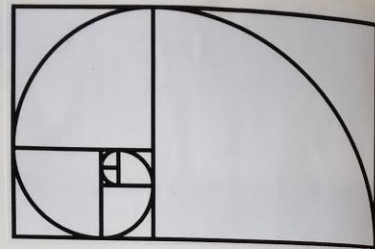
I printed it out and thought that there was not enough detail so I took it back and added more detail to it by adding more pellets and more lines on the shell.

more detail but I wanted to do another one as I didn't like the big black splotches at the top of the shell.



→ My final one

For my collage I am exploring animal strengths and how they are both as powerful as each other. The eyes are represented as the hunter, the shell is the protection.



For this collage I have based it on the Golden ratio composition. It works because it is a leading line going round to the centre. It mimics how the birds is going round on its prey.



The tortoise in the middle is protected by the shell. I amplified this by adding more shell but I felt it did not work.



Instead I added a grey circle to capture the tortoise more. It also represents a safety net for the tortoise as it is being circled in on.



The circles reinforce the protection of the shell.



By adding more it started to look like a target symbol.

Which works as the bird is trying to catch its prey.



I tried to direct the eyesight, by adding white on the eye directing towards the tortoise. I did not like how it looked.



49 marks - 1FA0 C2

Mythical Creatures



Pablo Picasso
→ The King of the Minotaurs
1958

Mythical creatures are animals or beings that exist in mythology or legends but not in real life. Cultures around the world have their own stories about what those creatures are and how they interact with humans.

Jason and the Golden Fleece

- Jan Muidens



As humans we envy the powerful qualities of mythical creatures. We fantasize them but we also want to kill them as we want that power & strength.

The Minotaur



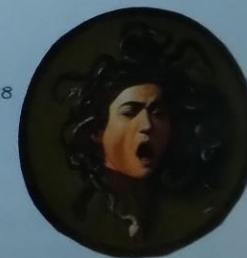
George Frederic Watts → 1885

A minotaur has a body of a man and a head of a bull.

Medusa is another example of a human hybrid. She is a powerful woman who turns people to stone.

Medusa
- Caravaggio
1595-1598

Medusa is a woman who has snakes as hair



Mixed animal collages



The eagle combined with the tortoise creates a mixture of protection and strength because of the combination of the tortoise shell and the claws of the eagle.

I played with the drawings and etchings I have done to create two mythical creatures.



For this I brought in the ram's horns because I am starting to consider the qualities of different animals and how they combine.



49 marks - 1FA0 C2

Heraldry

Heraldry, the science and the art that deal with the use, display, and regulation of hereditary symbols.

The initial meaning of the term herald is disputed, but the preferred derivation is from the Anglo-Saxon here "army" and wald "strength".

They were originated when most people were illiterate but could easily recognize a bold, striking and simple design.

Animal Symbols



A horse = speed

→ Rearing up (rampant)



Lion = Bravery



Eagles = power & nobility



These fabulous beasts never really existed. But some people believed they did, maybe because they'd heard about them in stories made up by travellers to distant lands. Pictures of them also appeared in "bestiaries", a popular kind of illustrated medieval story-book.



Manicorn: a fearsome man-eating creature with a lion's body, a man's face, tusks, horns and a deafening trumpet like voice.



Griffin: a combination of lion and eagle. symbolizes watchfulness and courage.



Cockatrice: a cross between a cockerel and a dragon, supposedly hatched from a cock's egg by a snake or a toad. symbolizes protection.



Dragon: the most common beast, also used as a badge by Romans, Anglo-Saxons and Welsh. A brave and cunning defender of treasure.

They were commonly used throughout the 11-17th centuries, and they can be meaningful reminders for families past, present, and future. The symbolism in the design of a family crest or coat of arms can tell you about your ancestors' achievements and status in society.



A family crest or coat of arms, often positioned on a shield, feature animals (sometimes mythical) that symbolise certain strengths/qualities that the family feel they display.



I decided to do a pen drawing of a shield because the examples I looked at have shields in the background.



The shields are another form of protection and they physically go on knights and signet rings to shield them.



49 marks - 1FA0 C2





49 marks - 1FA0 C2