



Pearson

Component 2: Fine Art Standard Mark – 41

	AO1	AO2	AO3	AO4	TOTAL
Mark	9	10	10	12	41
Level	3	4	4	4	
	Fully emerging competent ability	Just competent and consistent ability	Just competent and consistent ability	Fully competent and consistent ability	

Keyword descriptors from the taxonomy:

Engaged

Informed

Examiner comments

This Fine Art Component 2, consists of an A3 sketch pad, and 2 A3 square water-colour responses produced in the 10-hour period of sustained focus. Images of the work selected here reflect the characteristics of work just into Performance Level 4, Competent and Consistent, with a mark of 41/72.

The candidate begins their preparation period by creating a predictable written and visual mind-map in response to the examination theme of 'Lock'. The still-life paintings of artists Gretchen Hancock and Janet Fish focus the candidate's emerging ideas on small collections of objects.

These sources lead to a thoughtful photo-shoot of hands securely holding personal items of jewellery. The candidate comments: "these photographs were meant to symbolise the value of jewellery and the way people protect their belongings and hold them away from others'.

Competent observational studies are made of a small jewellery box, items of jewellery and a key, using the medium of water-colour and a fine black pen. Ideas are refined further through detailed and carefully observed studies of a bracelet and gemstone, reflecting a skilful approach to recording. A reflective plan for the final timed examination response includes compositional experiments and an informed selection of appropriate water-colour paper.

Following a further photo-shoot of hands, the candidate uses the timed examination period to create a diptych of water-colour and pen studies, each depicting a hand holding the faceted gemstone. The soft tonal painting of the hand is underpinned by an informed understanding and engaged application of the formal elements.

For the submission to move more securely into Performance Level 4, Competent and Consistent, the candidate could demonstrate greater evidence of ability of developing ideas through critical understanding of sources.

Janet Fish

Visual

William Michelson

Vilhelm Kammershoj

Audrey Flack

Mark Powell

Vanitas paintings

Mindmap

Primary Sources



I don't like this one as much as some others because it is very messy but I like some of my shadows. The colors interest me because I like the spots of light and dark to further in the use of possession. I could do a drawing with the box open with possessions inside.

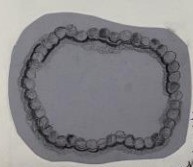
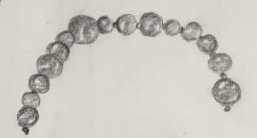


I like the use of ink in this drawing because it was able to use it to create very clear shapes. The shape of the hand holding the key appealed to me because it shows the idea of taking away your possessions to develop this theme more widely. I will use the hand holding these possessions or locking them away with the key or clipping them in the hand or putting them in boxes.

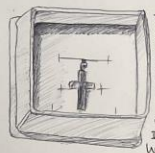
The paint pulled up the paper a bit but I do like the coloring of the crystal on the bracelet. Exploring the themes of Possessions I wanted to show how we interact with our possessions so I did just a hand wearing the bracelet to develop this theme more widely. I might have a layer bracelet or also have the hand holding it.



I really like how the light creates really soft spots on the pearls. The hand the shading really shows the curvature to develop further. I will have more bracelets or some resting the bracelet.

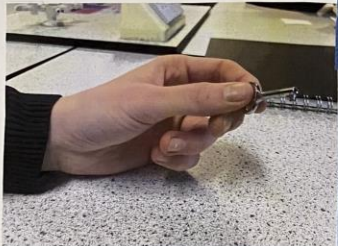


I like the way the beads are at different levels. The fingers opened some space. I like how the beads place to make a circle so develop my theme more widely. I might bracelet be no held or locked away somehow.



I really like the shading of the hand and how the light reflects it is so develop my theme more widely. I might have a bar with closed.

Photography



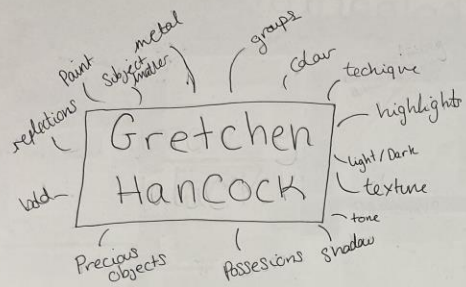
These photographs were meant to symbolize the value of the jewelry and the way people protect their belongings and hold them and keep them away from others with a focus on the actual jewelry. My favorite pictures were the larger ones on the left especially the one of the hand holding the key and the hands holding a bunch of bracelets because I feel that they show how people keep their jewelry and possessions close by having the hands in the picture.

Photography



Research:

Born: 1960
 She grew up in Nebraska. She is attracted to distant views and the feeling of openness and unlimited possibilities. She paints places she knows and sees everyday. She often paints in acrylic when doing larger pieces and landscapes and uses oils for plain air work, small landscapes and still lifes. She enjoys the effects of sunlight and how it organizes and simplifies spaces. She often hopes for a sense of recognition from her viewers.



Content Form & Mood

Content:
 This painting is of a tea pot with light flowers behind it. The teapot has a large contrast between the light and dark points. The light flowers also provides a harsh contrast which draws your eye to the pot as the focus of the piece. The flowers are also not very defined with orange centers which tells us that these are flowers. In addition, it also has a brown background which creates a plain base for the pot and flowers to be seen on.

Form:
 Gretchen Hancock uses many of the formal elements to elevate her work. She uses a large tonal range with bright colors to draw your eye and allow you to see a large realistic image. She uses large brush strokes and very little blending to enhance her image. Especially with the flowers where there is no lines and just a range of tones and shades to create the floral effect. This is good because she doesn't look like she is painting. She uses the clear way in which she layers her paint.

Mood:
 This painting has a calm and peaceful mood with the colours and object not being overwhelming. The colour blue often symbolizes peace and serenity so using that in this painting reflects that and the observer will get that the flowers also symbolize fragility and weakness which helps with the peace and serenity from the tea pot. It is a contrast which is from the colour and the contrast from having your own possessions.



With my transcription I like how there is a sharp contrast between the bright and the darkness. I really like how I was able to replicate some of the brush strokes. I also like how I replicated the clarity. To use this to further my theme I will use this to help paint and create better paintings that communicate my theme.

I like the way the beads shine and have lots of highlights. In exploring the textures, I enjoyed the way we have and took away from it. I wanted to try having a piece of jewelry by itself in the a similar style to Gretchen Hancock to develop the theme more widely. I will have more similar pieces together make a set of jewelry.



This suggests to me the way jewelry can cover us and restrict us and the way it can weigh us down. The "structure" appeals to me because I like the form of the necklace as the diamond and the crystal in the center of the palm to make this idea clearer. I will have the cord more taut and restrictive.

Artist Responses



I like this one because I think it shows a nice presentation of the necklace not the way the hands are placed as if they are showing someone the necklace.

paint is layered on in faded strokes and is more than a range of colors in skin tone. Exploring theme of holding keeping it close to my neck. The piece in a way to explore jewelry in this tone. I do more drawings as in with possession this is a primary source painting.



Like the way the ink is used. I wanted to show a thing in how we keep things close to explore my necklace. I will more drawings of the jewelry in or isolated.



I wanted this image to create a sense that these pieces are something that are down on the person personally which are meaning in the hand shake.

I like how the crystal is such a focal point in the image and it really draws your eye.

I like the way the focus is on the necklace with the person as if this could be anywhere. Not like the color of the jewelry in the necklace in a way to the skin tone.



Like the way that they paint in the necklace really shows the focus on the drawing. Like how the shading on the skin tone was used to explore the necklace. I could do more with the necklace pieces.



I like the way the beads shine and have lots of highlights. In exploring the themes of memories, possessions we have and own, I wanted to try having a piece of jewelry by itself in a similar style to Gretchen Hancock. To develop this theme more fully I will have more jewelry pieces together in a set of jewelry.



I really like the colors from this picture and how the blue attracts your eye immediately.

The necklace has a protective feel to me as it is coming from a person but being a barrier to protect from harm. This has it is always around in neck.



I like how the cool blue contrast the yellow and red tones on the skin here and how it adds a more comforting feel than the other.

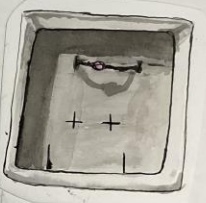


Artist Responses

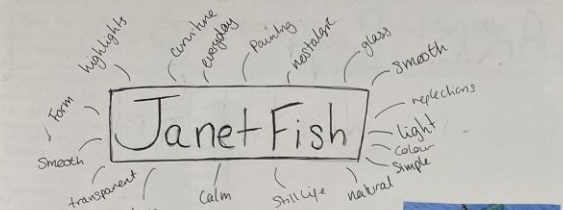


The paint is layered on in unbleached streaks and is trying to show a range of color. In skin tone exploring the theme of holding, keeping the ~~possibility~~ possibility I wanted to try making the necklace in a light to explore my interest in skin tone. I will do more drawings as they with possession. This was a primary source painting.

I like the way the ink is layered. I wanted to show the things in how we keep certain things to explore my interest in things of color. I will do more drawings as they with possession. This was a primary source painting.



I like the way that the paint only on the necklace really shows it's the focus on the drawing. I also like the shading on the hands. The structure added to the drawing was lots of layers to explore the texture. I could do more mixed media pieces.



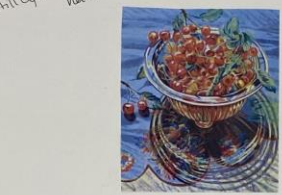
Research:

Born: 18th May 1938, Massachusetts, USA.

Janet Fish is a contemporary American realist artist. Through oil painting, lithography, and screen painting, she explores the intricacies of life with everyday objects in the still life genre. She does still life of familiar everyday objects like fruit, flowers, and glassware which she sources from her home, travels, and flea markets. She was influenced by many of her family members who were also visual artists.

I am studying her to look at how she uses light, reflections and transparent objects to help with her own reflective paintings.

I feel as though I haven't seen an object until I have painted it - Janet Fish.



Content, Form and Mood

Content:
The painting is of four jars of natural honey with some stacked on top of each other. It is painted in oil paint and has a wide tonal range of orange colours. It has many highlights and light reflections and is slightly translucent. The background is very plain so your entire focus is on the jars of honey and isn't overwelming for the viewer.

Form:
One of the main formal elements used in this piece is the use of colour. The colour really helps enhance the form and helps the viewer to understand what is being shown in this piece. The highlights help show the curve of the jar and how the light bounces off. Another one of the main formal elements used is tone. She has used a large tonal range so she could show the form and there is an absence of texture in the honey to show how smooth it is.

Mood:
This painting has a calm nostalgic mood to it because of the objects she has used. Honey is a very common and simple thing you see in everyday life so the painting as it really emphasizes its nature especially since honey is such a natural thing. The simplicity in the background also adds to the calm mood because you can really focus on the jars.



I do not think I was able to replicate the colours or technique very accurately however I do like my shading and how I showed the form of the honey comb and the jar. I did struggle with showing the bottom of the jar. I think the experience of painting this will help me with drawing parts of the necklaces and the light reflections.

Artist Responses



I like the mixed media because I love the way it draws your eye to the middle because to explore the theme more I would want to be more mixed media.



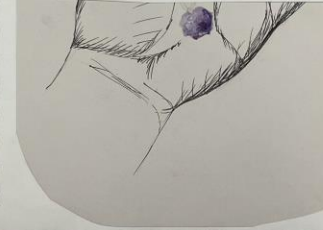
I wanted to have more photographs with a focus on the hands and crystals within the hands. I really like the singular hand as it was a large tonal range and has the crystal clearly seen.



I like the use of two different kinds of media. This was a primary source painting; the texture of the crystal appealed to me and I wanted to show the rough edges to explore my interest in mixed media. I could do more drawings with a wider range of media.



I like the way the hands are presenting the jewelry. The structure appealed to me as it was holding the jewelry to make this idea clearer. I could have the jewelry being held by the hands actively instead of the passive placement of the jewelry nested in the palms.



Artist Responses



I like the way I capture the highlights of the gem. The structure appealed to me because it was so geometric to explore my interest in highlight in jewelry. I will do more paintings in jewelry but I will add pearls to show the texture.



With these photos I wanted to capture how people display their jewelry on their necks and how it becomes a part of them when they wear them.



I like how many highlights are reflecting off the crystal.



I wanted to try a media that I don't use very often so I chose oil pastels. I like the way I shaded the gold. However, I do not like how uneven the application was.



This suggests to me the presentation of jewelry and how held it to make me to still their the structure appealed to me because it is quite abstract to paint to work into this more I will use more into the colors and shading of the hand.



I really like these photographs because I think they show detail in the presentation of the necklace and I really draw your eye.



layout ideas

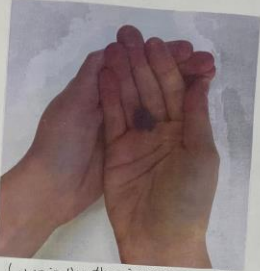
I want to do two final pieces. Neither too large in cut and wash and paint to highlight the crystal in the hand.



I want to do one of my final pieces of this picture because I like how the crystal has highlights and the hand has wash areas of contrast and tone. I will do it in cut and wash with the amethyst in acrylic.



This was another one I liked the tone hands but I think this crystal is too similar in color to the hand.



This is the other image I would like to do as a composition piece because I like how the hands are holding the amethyst. I want to do it in cut and wash same as the other piece with the gem in acrylic to highlight it.



I think the hands take up a good amount of space and are interesting composition.



I don't want to use this composition but I would like to do a similar composition to this for one of my final pieces. I just didn't feel as though the crystal was a good shape for what I wanted.



Final Piece Practice



I really like the way the crystal stands out against the black and white of the hand. I would like to make the hand darker to create more of the shading.



This one I spent a little less time on because I wanted to just get a feel of the size and composition at the accurate size.



because I found the paper I worked on would disintegrate because of the water. I decided I would use water colour paper instead so I decided to practice the acrylic section on the water colour paper and I think it worked just as well.



