

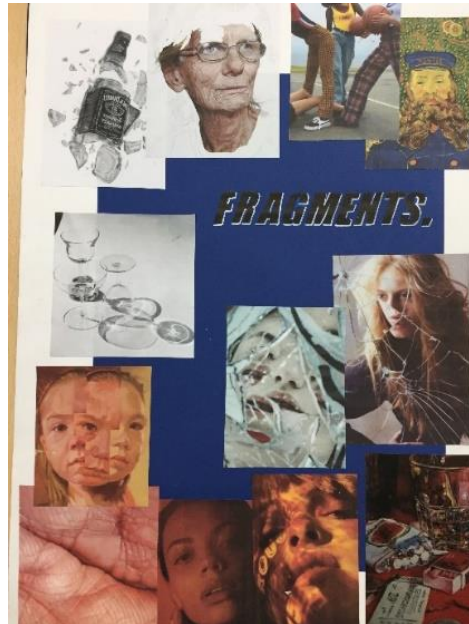
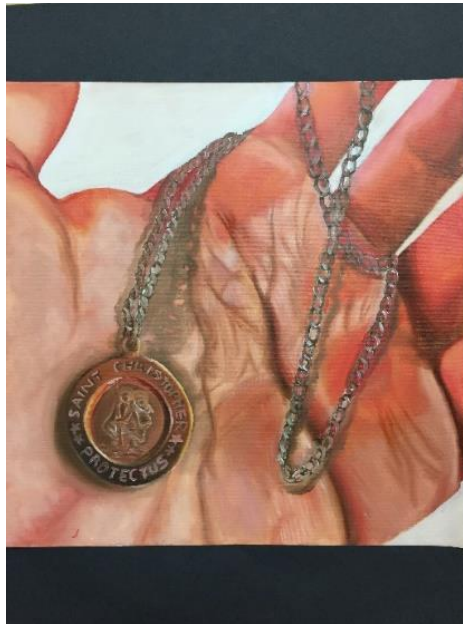
Component 2 Art, Craft and Design

Standard mark = 62

Keyword descriptors from the taxonomy:

Advanced	Convincing
Comprehensive	Focused
Perceptive	Refined
Resolved	Risk-taking
Accomplished	

	AO1	AO2	AO3	AO4	Total
Mark	15	16	16	15	62
Level	5	6	6	5	5/6
	Fully confident and assured ability	Just exceptional ability	Just exceptional ability	Fully confident and assured ability	



Distortion

- 3D glasses vision
- colours and overlapping images
- objects placed over face
- objects creating an image
- memory distortion
- party aftermath scene
- bottles, cups, etc.
- zoomed in image of broken skin, fragmented skin not apparent where it is on the body

Inspirational artists

- Jeff Huntington
- Metra Bruno and Laurence Jeanson
- Michael Hayes
- Vincent Van Gogh
- Kate Brinkworth
- Stephen J. Shanahanbrook
- Edie Nadelhaft

life and loss

- past away relatives
- hard times

FRAGMENTS.

light

- light/shadow on face
- contrast between light and dark
- emotion on face to match the mood of the painting
- fragments of light

link between light and colour

Broken

- reflection in broken mirror
- smashed objects
- glass bottle
- wrapper
- deflated/popped balloon
- unfinished painting
- pulled apart face

Colour

- mean light reflection on face
- colour breaking up/separating face
- fragments of colour
- clashing patterns

ARTIST RESEARCH. EDIE NADELHAFT.

Edie Nadelhaft is a painter and mixed media artist based in New York. Her work is inspired by a fascination with the physical world and the vulnerability of the human skin.

The subject matter of cracked and fragmented skin zoomed in close in order to distort the image and making it unapparent as to what is represented in the painting is like that the viewer is compelled to think and ponder the images content. Adding a deeper meaning and allowing her art to be appreciated more.

This piece highlights Nadelhaft's fascination with the natural world, having connotations of both life and death, and also death through disease, leaving this piece (and many of her other pieces) very much open for interpretation.

The emerald and yellow colours of the fly create a contrast to the usual monochromatic colours.

INITIAL IDEA.

BROKEN

This design depicts a hand squeezed together in order to create the wrinkles and fragmentation of the skin. I was able to complete this piece with a certain degree of accuracy with the cracks of one piece as well as the other zones. However, initially didn't feature the 'Broken' written across the skin, this was because I considered more of an artistic response rather than an initial idea. So the addition of the text added a sense of originality, linking to the theme of fragments in terms of the meaning of the word as well as the look of the skin fragmenting the word itself.

As I develop this piece, I will keep the idea of fragments represented as a double meaning, one made to more obvious.

ARTIST RESEARCH. JEFF HUNTINGTON.

Jeff Huntington achieved a Bachelor of Fine Arts degree from the Corcoran School of Art in Washington, DC and went on to earn his Masters in Fine Arts degree from the School of the Art Institute of Chicago.

Jeff Huntington uses a range of media from oil paints to collage. However, for the piece I was reading, being influenced by Huntington, I am focusing on his work with oil. I was initially drawn to his use of colour in his faces, adding a visual separation between the merged faces. Also, I was intrigued by his style of painting, which is loose and free whilst still retaining a realistic and structured image.

His use of colour is definitely something I will take influence from when creating my own piece of work. The idea of merged faces is significant to the above, and a reason I will also include to show influence from Huntington.

INITIAL IDEA.

This design depicts a girl with light and colour reflected on her face, representing the theme in terms of fragments of colour.

Much like my inspirational artist Jeff Huntington, I painted this piece using oils.

I like the colour I was able to achieve around the eyes and the forehead as it clearly demonstrates who I was trying to accomplish with this piece.

If I were to develop this piece further, I would create the effect of overlapped faces to give a Huntington style.

I will also try to incorporate a wider range of colour on the face in an effort to create the idea of fragments of colour.

ARTIST RESEARCH. KATE BRINKWORTH.

Brinkworth's work depicts party scenes and alcohol, showing fragments of light reflected on bottles and objects as well as fragments of memory from the night before. Creating a story and leaving the scene very much open for interpretation.

Brinkworth's medium can vary from oils, to pencil. However, the same kind of effect is created. That being a realistic, though a quirky piece. She uses an interesting and vibrant colour palette. Though not her yet keeping it in a very monochromatic tone.

INITIAL IDEA.

This initial idea depicts a range of bottles reflecting and fragmenting the light, also the position of the bottles appears to be fragments as well. The employment of objects such as polaroid photos mimicking the work of my chosen inspirational artist Kate Brinkworth. I would most likely continue to use colour pencils if I chose to develop this further. As I progress with this piece, I would take from this, the reflected and fragmented light from the glasses, and combine it with the subject matter of my first initial idea, having a reflective and shiny object in contrast with a hand.



These observational drawings correlate with my first mental ideas, giving me a deeper understanding of the colors and anatomy of the hand.



Secondary source of painting to practice painting the person I used for my initial idea and later on in my development.

ARTIST COPY.



I think my artist copy demonstrates a good understanding of my chosen artistic technique and style.

Flesh by Edie Nadelhaft. I chose this piece for an artist copy because it embodies and perfectly represents Nadelhaft's work. The depth of the wrinkles and framing of the piece are very recognizable and recognizable to Nadelhaft. This piece has a realistic appearance, while having exaggerated red colors.

IN DEPTH ARTIST ANALYSIS.

I chose to focus on Nadelhaft's work with skin and flesh throughout my piece. I was fascinated by the intricate texture of the flesh and the zoomed in framing, discarding the imaging and leaving the viewer wondering where on the body it is.

Although, Edie Nadelhaft's work ventures beyond flesh. Her repertoire also includes coral waves and political state maps taking the form of flags, with a recurring theme of zoomed in and dissected framing throughout. When it comes to the technical aspects of Nadelhaft's work, she begins by photographing her subject (whether that be hands, lips, waves or flags) she then crops and zooms her image until she has achieved her desired aesthetic for the piece. Followed by a meticulous oil painting process to a hyper-realistic, exacting standard with the message of the piece being clearly conveyed. For example, her work with flesh of the hands focuses on how our increasingly digital culture is losing human interactions such as touch.



DEVELOPMENT 1.



I chose these two photos for my development because I like how the color hits the face. I also like how the angles of the head combine to make a good composition.



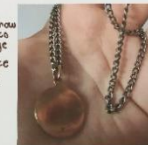
DEVELOPMENT 2.

When deciding which photos to use for this development, it ultimately came down to these two. In the end I chose the one on the right because of the composition of the hand as well as the contrast between the shadows and the light.



FINAL PIECE CONCEPT.

This shows how the necklace will lay on a slight angle.



This shows how I wish to arrange the necklace in the hand.



I feel as though green would be too harsh. So I choose to use red.



I decided to add a colored shadow to a hand to link my two development ideas.

The red shadow provides a much more subtle aesthetic, one which will not distract from the necklace.



This shows me how the red light reflects off the pendant.

Standard mark = 62

Keyword descriptors from the taxonomy:

Advanced	Convincing
Comprehensive	Focused
Perceptive	Refined
Resolved	Risk-taking
Accomplished	

Comments:

- There is evidence of an accomplished development of ideas with a focused investigation approach.
- The candidate explores ideas through a convincing process of experimentation and review.
- Annotation is comprehensive, demonstrating a high level of critical judgement and analysis.
- The refinement of ideas is informed by personal insights and investigations. Knowledge, understanding and skills are effective and focused throughout.
- The candidate has used the period of sustained focus to create an accomplished outcome informed by their comprehensive and sustained preparatory studies.

	A01	A02	A03	A04	Total
Mark	15	16	16	15	62
Level	5	6	6	5	5/6
	Fully confident and assured ability	Just exceptional ability	Just exceptional ability	Fully confident and assured ability	