

# Component 2 Art, Craft and Design

## Standard Mark – 26

Performance Level 2/3: Basic/Emerging Competent

	AO1	AO2	AO3	AO4
Mark	7	6	6	7
Performance Level	3	2	2	3
	Just emerging competent ability	Fully basic ability	Fully basic ability	Just emerging competent ability

Keywords from the taxonomy:

**Deliberate, Methodical, Superficial, Unrefined, Simplistic, Tentative, Broadening**

# Moderator commentary

This Component 2 Art, Craft and Design submission consists of an A3 square sketch pad, an A2 sheet of preparation studies and an A3 painted and collaged outcome created during the 10-hour period of sustained focus, in response to the Externally Set Assignment theme of 'Power'. Images of the work selected here reflect the characteristics of work between Performance Level 2, Basic and Performance Level 3, Emerging Competent, with a mark of 26/72. The strengths of the submission lie within Assessment Objectives 1 and 4, Develop and Present.

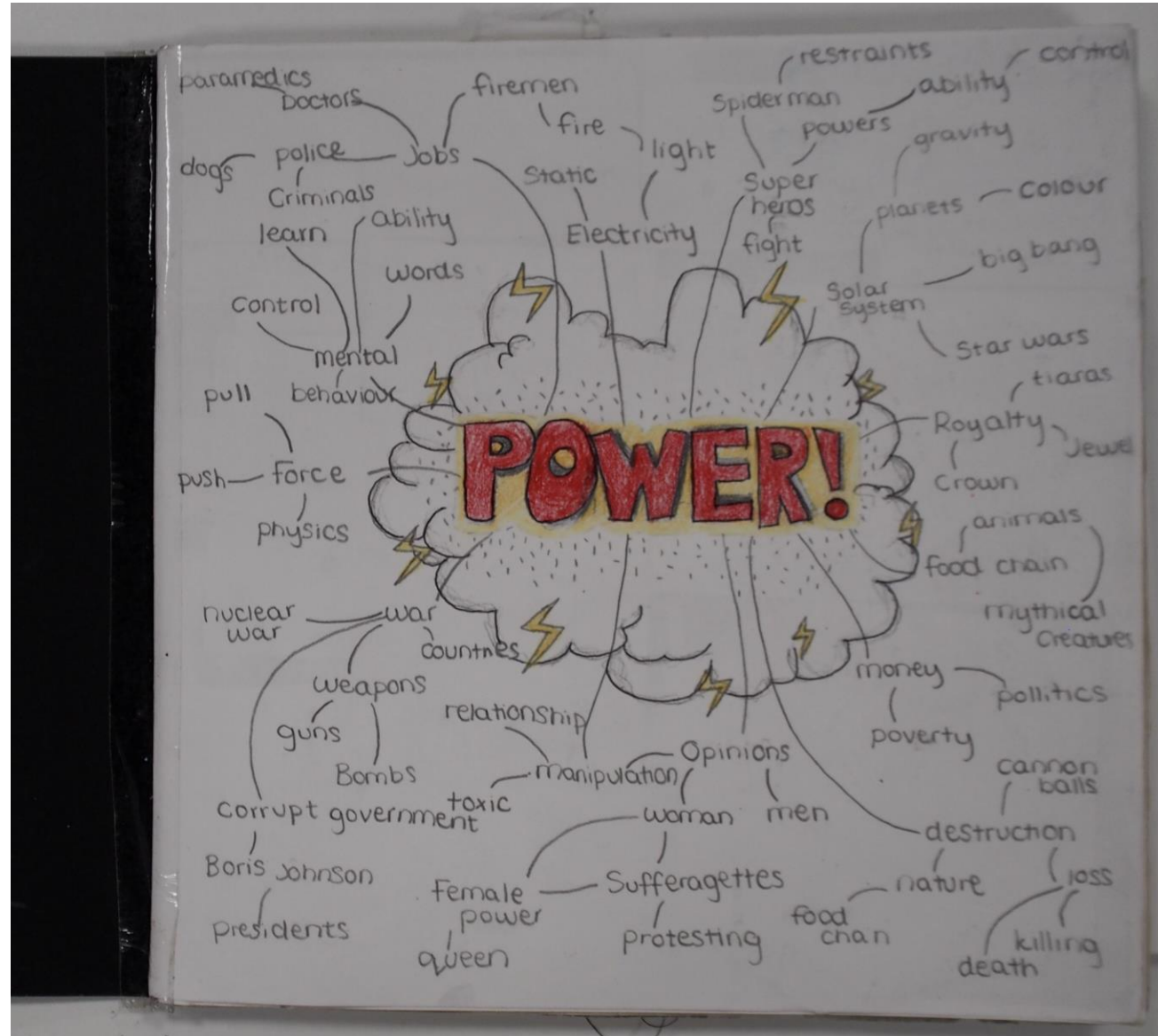
The candidate begins their preparatory study period with a mind-map and visual references for their selected sub-theme of "The Power of Fashion". Several fashion houses are methodically researched, including Chanel, Balenciaga and Dior. Annotation is mostly biographical and descriptive; "This clothing is cream and white and is a tight-fitting outfit which includes 2 breast pockets and 2 hip pockets with a panel skirt".

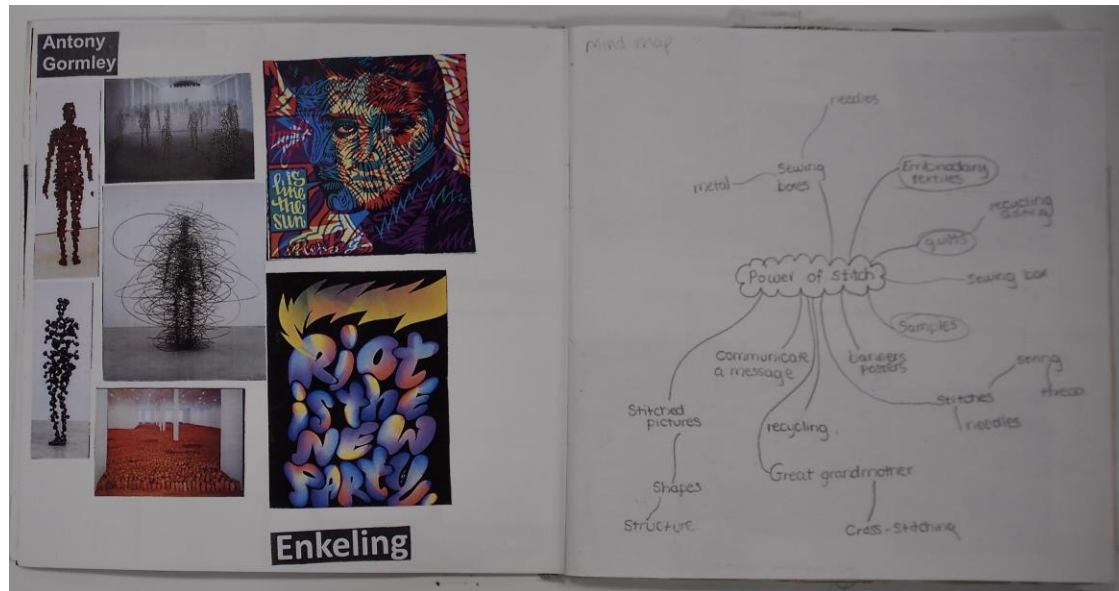
A visit to the 'Fashion City Exhibition' at the Museum of Docklands is documented within their sketchpad. They simplistically annotate: "I chose this museum because it shows different materials and designs of fashion". Some initial, unrefined fashion design pencil sketches are made.

An A3 sheet of preparation studies are presented, documenting some creative ideas and responses to secondary source material, including drawings, collages, watercolour studies and a tentative drawing in white pen on black paper of a layered ball gown. This work is presented on a background of torn fashion magazine images.

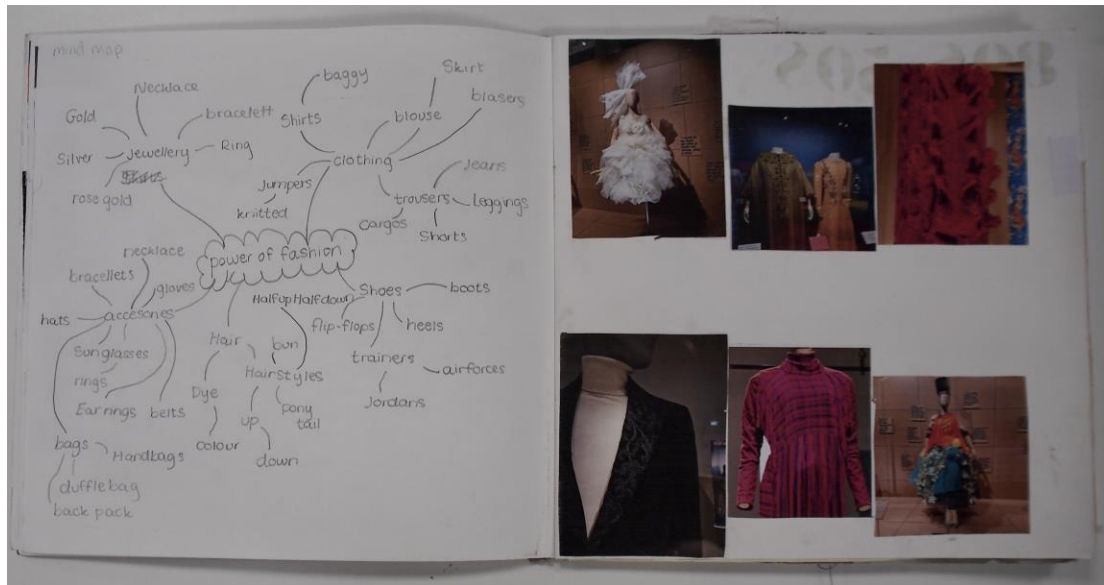
During the 10-hour period of sustained focus, the candidate creates an A3 painted collage of a potential fashion design, incorporating some basic interpretations of the work of the fashion houses researched. The manipulation of paper to create rolls, folds and fringes shows some broadening of ideas and techniques.

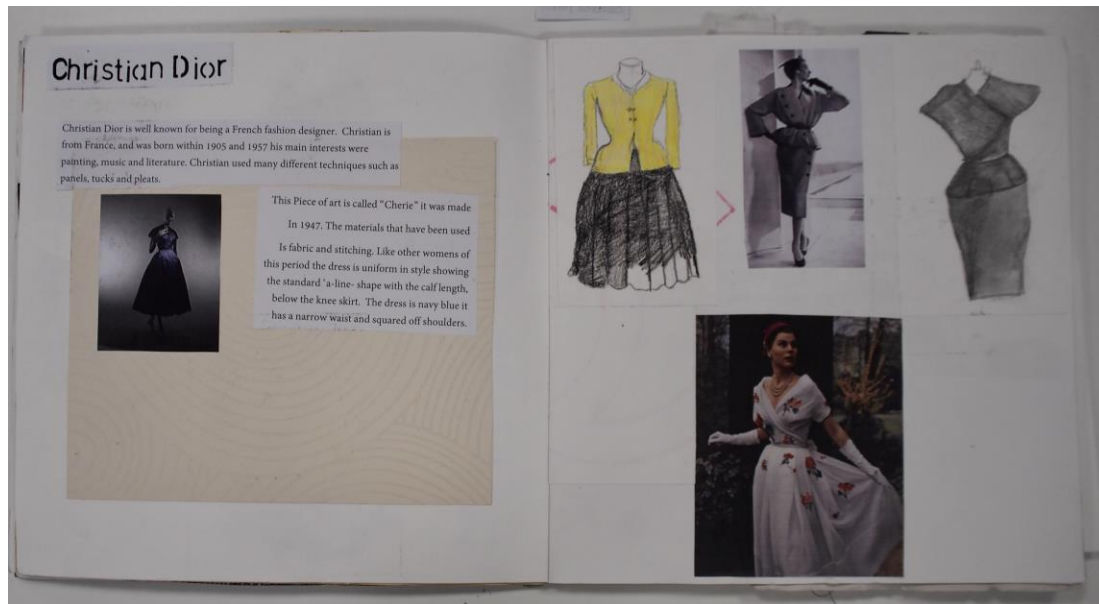
In order for the submission to move into Performance Level 3, the candidate could show greater evidence of refining work by reflecting on ideas, and having more secure control when experimenting with appropriate media, materials, techniques and processes.

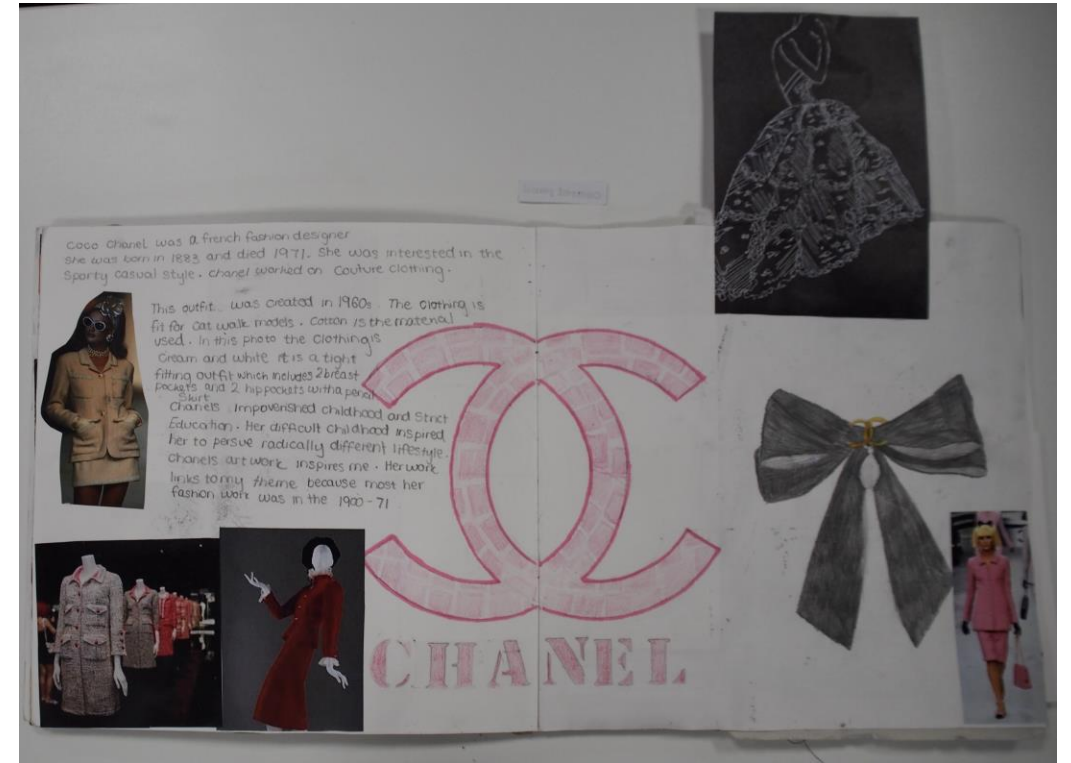
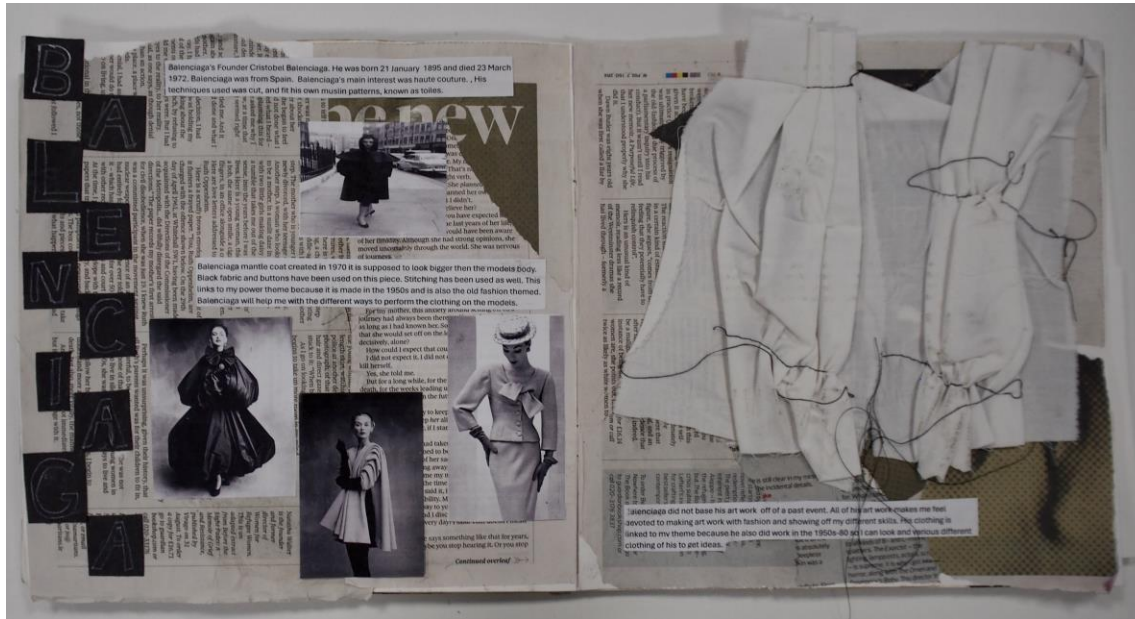




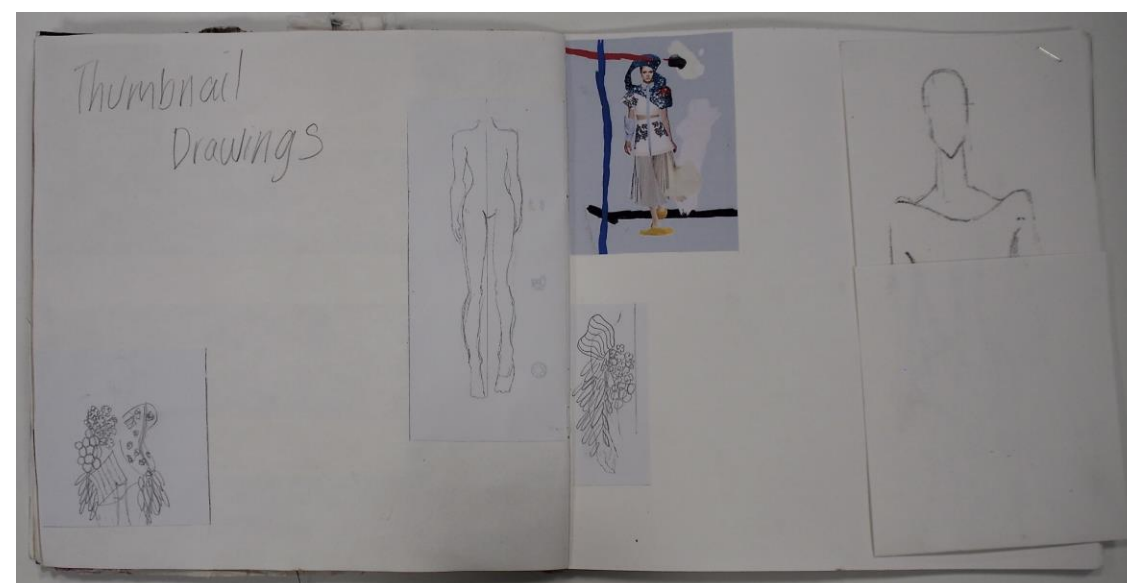
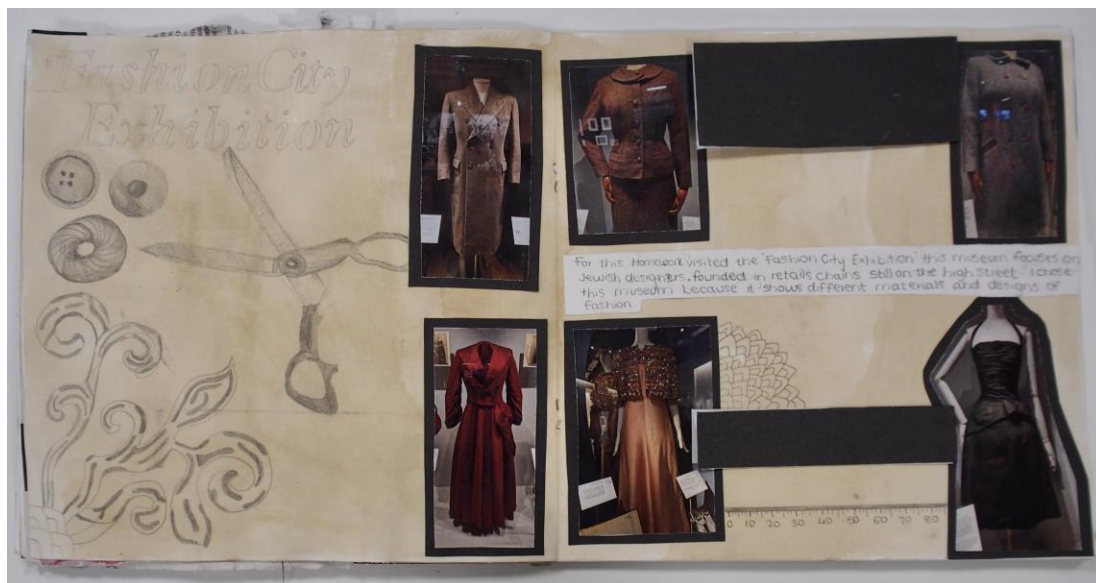
















26 marks - 1AD0 C2



26 marks - 1AD0 C2