

GCSE 2016 Art & Design



U367

Background image: © solarseven
Origami: © Justin Hoffmann & Mark Bolitho Pearson Education Ltd



Component 2 – Art, Craft and Design Level 2



Candidate 5

Art, Craft and Design – Level 2

AO1	AO2	AO3	AO4	Total
5	5	5	5	20

Examiner comment:

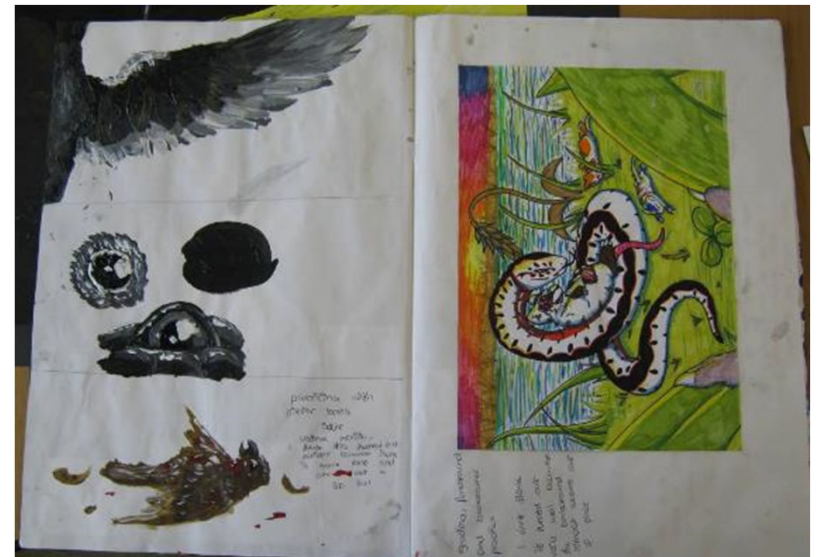
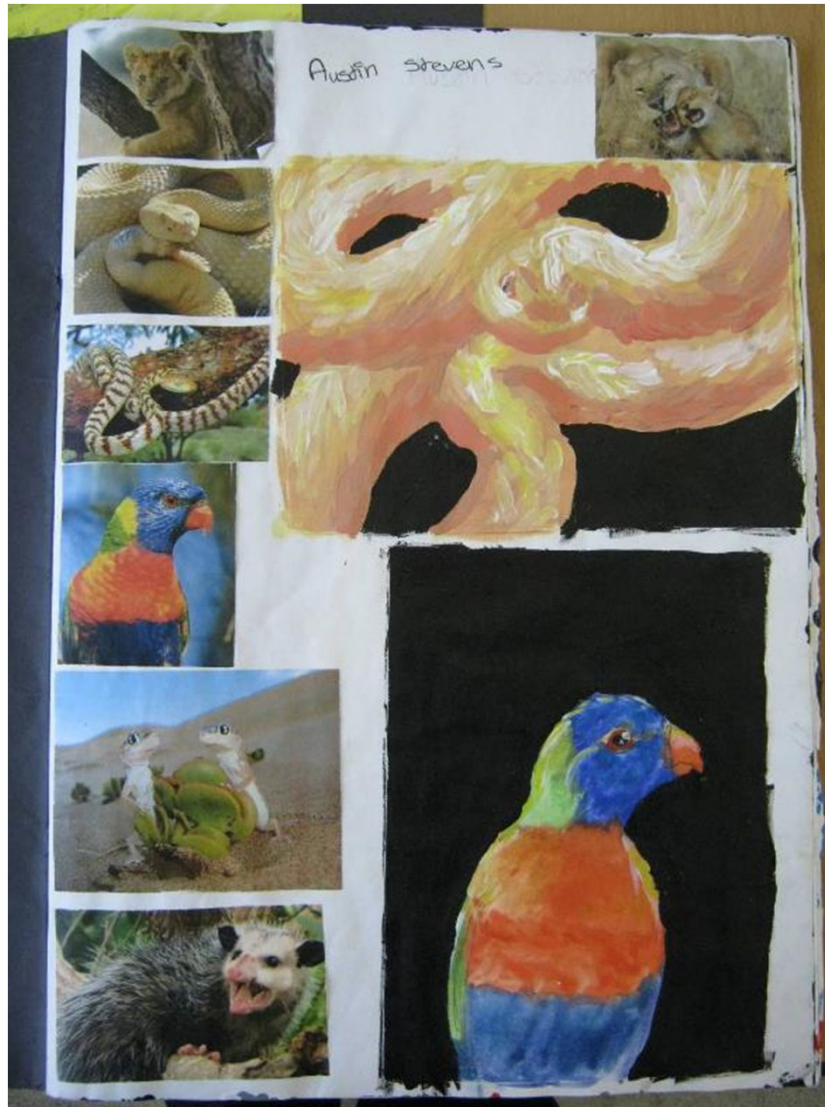
AO1: Mostly basic ability – Level 2

AO2: Mostly basic ability – Level 2

AO3: Mostly basic ability – Level 2

AO4: Mostly basic ability – Level 2

Total of 20 marks overall.



20 marks



most of the artists work have a curious and ripples look so the way the cow is drawn it gives it a look of realism her pieces seem to only have one area of light into the dark.

the work seems to be giving a kind of magic feel to it.

apafis

a piece made using apafis style like leaves acute points is a better approach than other methods

pieter Boel

his artists work is a mix of nature and reality, the details he puts into the markings.

the artwork looks very realistic with the detail on shading and the fine work.

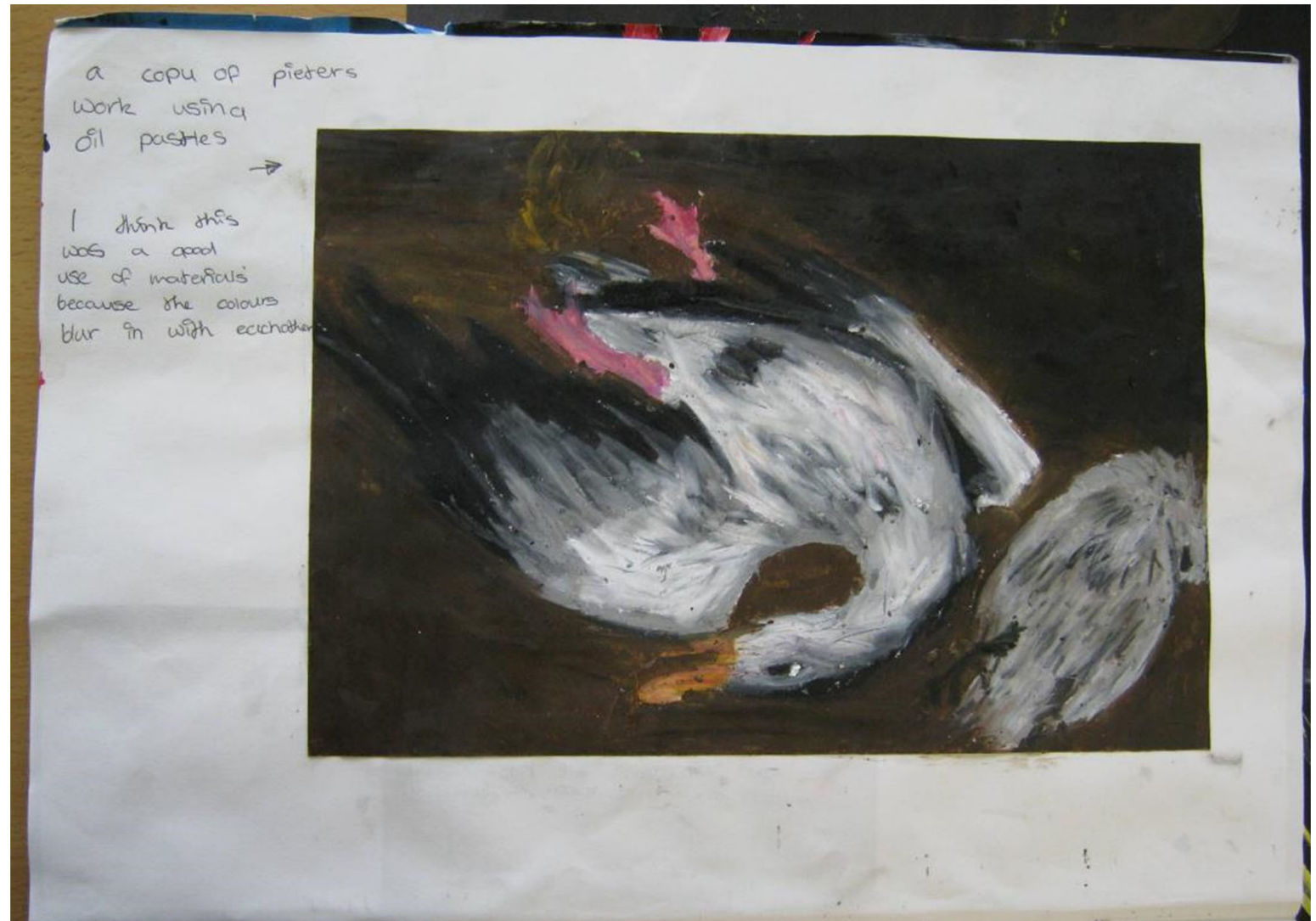
in most of his pieces it seems to be a collage of one type of animal and different details of it.

the colors in his work are mostly dark colors giving a kind of rippling feel to it.

most pieces have little background and foreground.

it used for his work for the reason because the color is more realistic.

20 marks



20 marks



20 marks



20 marks



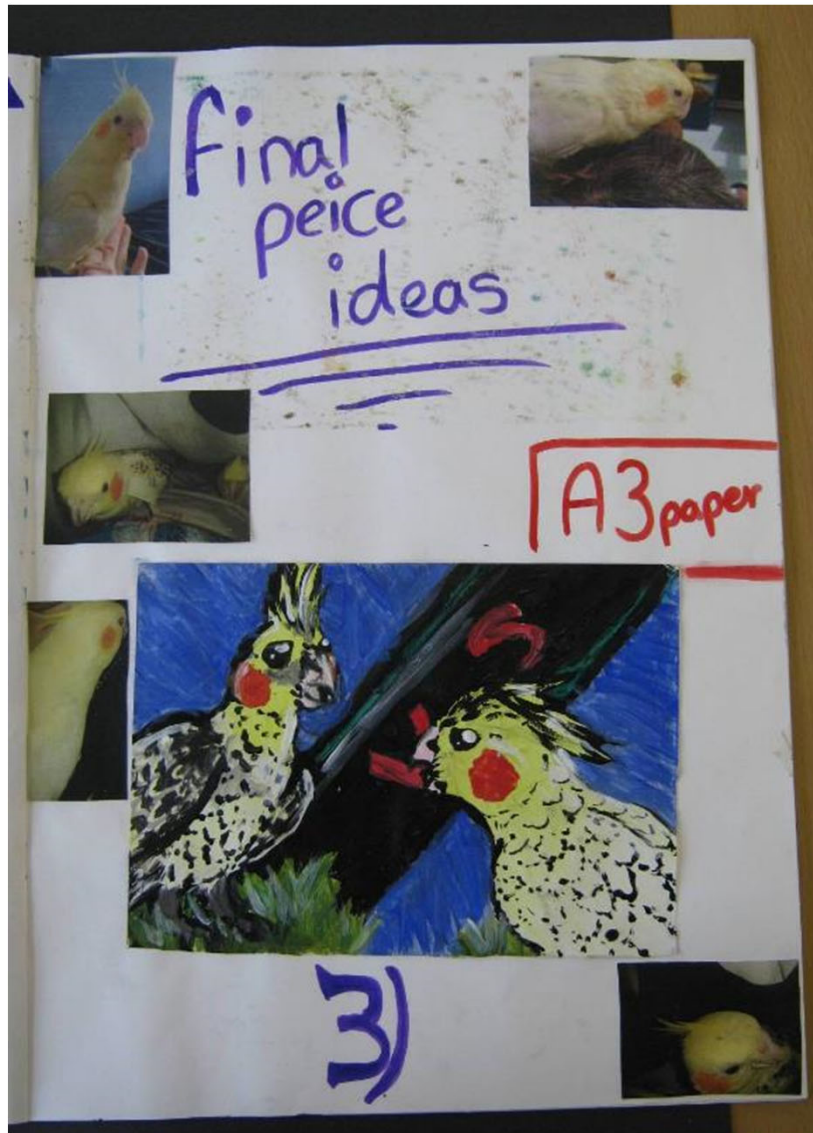
20 marks



20 marks



20 marks



20 marks



20 marks



20 marks



20 marks