

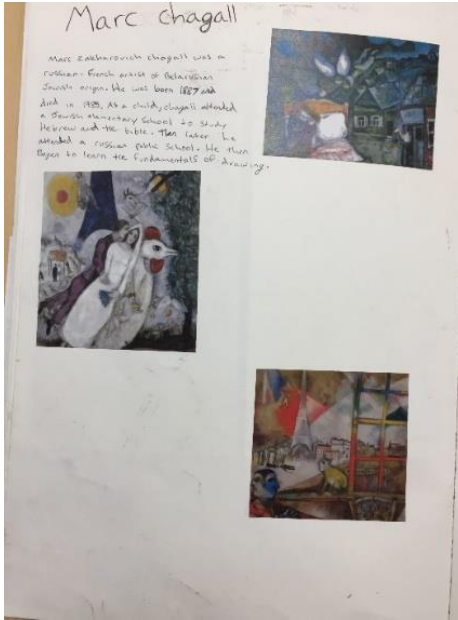
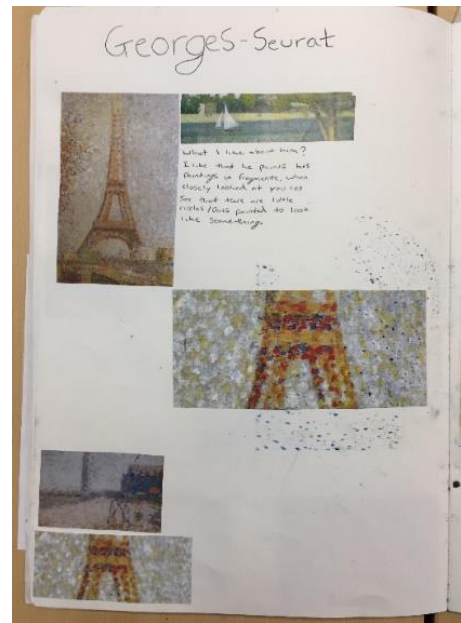
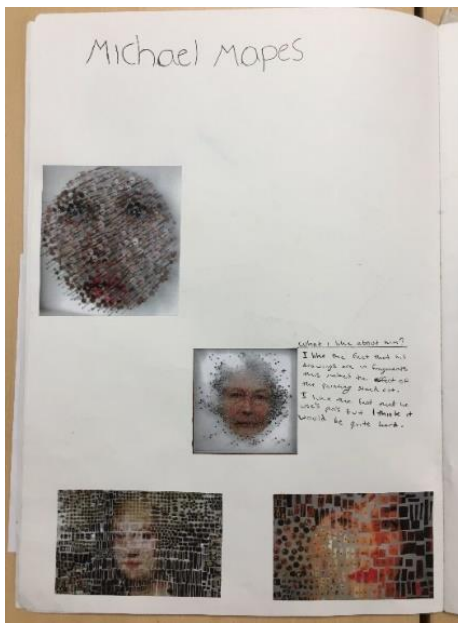
Component 2 Art, Craft and Design

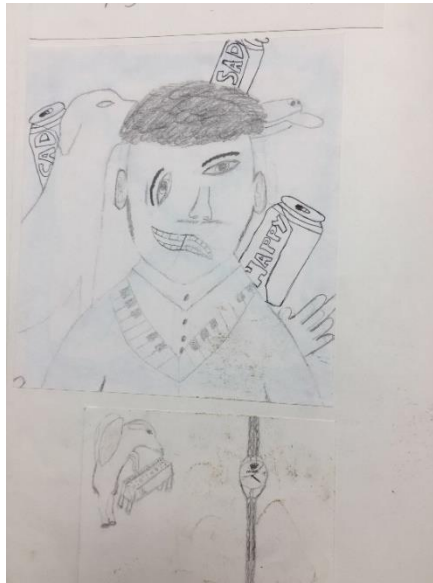
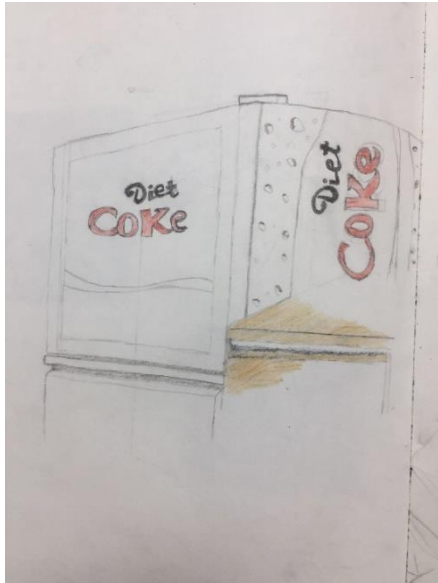
Standard mark = 15

Keyword descriptors from the taxonomy:

Unstructured Minimal
 Clumsy Elementary
 Disjointed Superficial

	AO1	AO2	AO3	AO4	Total
Mark	4	4	4	3	15
Level	2	2	2	1	1/2
	Just basic ability	Just basic ability	Just basic ability	Fully limited ability	





Standard mark = 15

Keyword descriptors from the taxonomy:

Unstructured	Minimal
Clumsy	Elementary
Disjointed	Superficial

	A01	A02	A03	A04	Total
Mark	4	4	4	3	15
Level	2	2	2	1	1/2
	Just basic ability	Just basic ability	Just basic ability	Fully limited ability	

Comments:

- There is evidence of drawing and pastel experimentation, which is clumsy and elementary.
- The exploration of ideas is superficial and minimal.
- The candidate's selection is disjointed and experimentation with materials, techniques and processes is unstructured.
- The candidate demonstrates a superficial knowledge and understanding to support the visual journey.