

# Component 1: Three-dimensional Design

## Standard Mark: 47

Performance Levels 4: Competent and Consistent

	AO1	AO2	AO3	AO4
Mark	11	12	12	12
Performance Level	4	4	4	4
	Mostly competent and consistent ability	Fully confident and consistent ability	Fully competent and consistent ability	Fully competent and consistent ability

Keywords from the taxonomy: **Informed, Purposeful, Secure, Skilful**

# Moderator Commentary

This Three-dimensional design Component 1 consists of an A2 poly-folder and various ceramic models, trials and outcomes. Images of the work selected here reflect the characteristics of work at the top of Performance Level 4, Competent and Consistent with a mark of 47/72.

The candidate begins by creating a visual mind map of personal ideas related to the theme of 'Surface, Pattern and Texture'. This is followed by gathering visual prompts during a visit to Falmouth, where a series of boat photographs informs the development of ideas, focusing on the diverse surfaces and textures present in a harbour setting. The photographs are skilfully composed, demonstrating a strong grasp of the formal elements of art and design. The candidate also investigates the work of British potter Alison Jones, with a focus on boats and harbours and ambitious construction projects.

The candidate features several nautical quotations alongside a collection of mixed media photo-collages. The contrast of textures, surfaces, and composition is securely investigated by manipulating their own photographs and adding areas of Gelli plate monoprints. A small, skilful relief collage created with folded and crumpled photographs initiates the process of working in three dimensions. Test tiles are used to thoughtfully explore different surface treatments, such as impression, addition, and reduction, as well as glazes, oxides, underglazes, or non-fired techniques.

# Moderator Commentary

The skilful and informed three-dimensional clay outcomes were completed using a combination of underglazes and stoneware glazes. Both stoneware glazes and underglazes were applied to the large anchor sculpture. In contrast, the larger boat outcome involved finishing the boat vessel with acrylic paint.

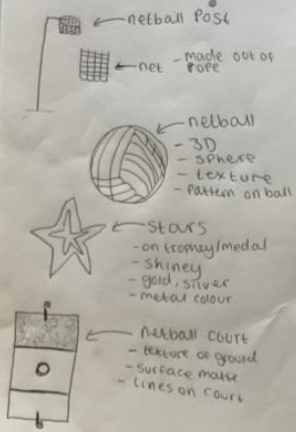
Throughout the project, the candidate demonstrates a competent and consistent ability to synthesise visual research and technical experimentation, resulting in outcomes that are both imaginative and skilful. The progression from initial two-dimensional explorations to the final ceramic pieces shows a clear understanding of material properties and an appreciation for surface qualities. The sketchbook work evidences sustained reflection and some purposeful annotation, making connections between sources of inspiration, developmental work, and finished outcomes.

To progress beyond Performance Level 4, Competent and Consistent, the candidate could engage with a broader selection of artists in developing their ideas and demonstrate more advanced integration of technical processes.

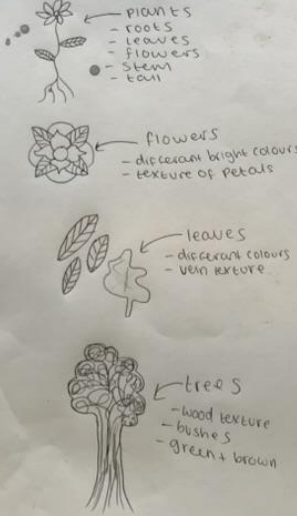
# IDEAS PAGE

..... Surface, Pattern, texture .....

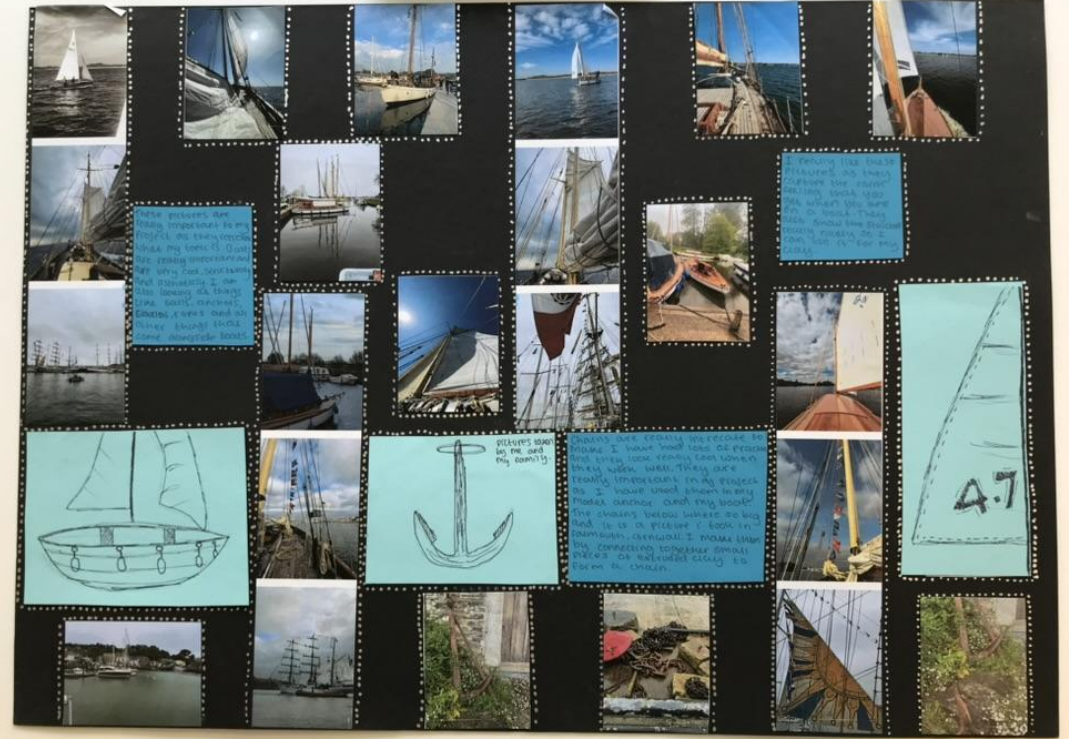
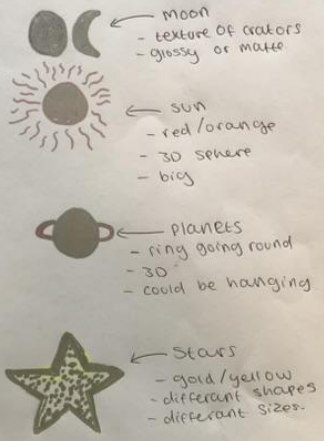
## NETBALL

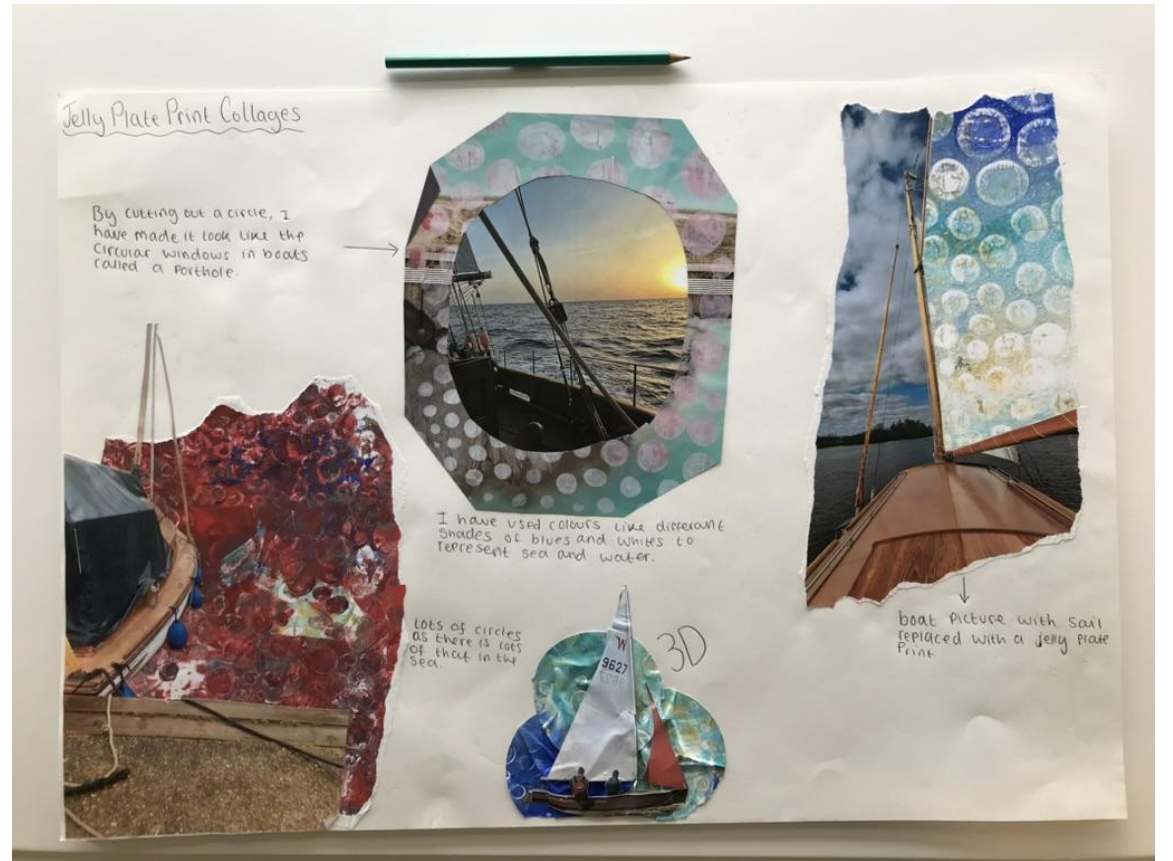
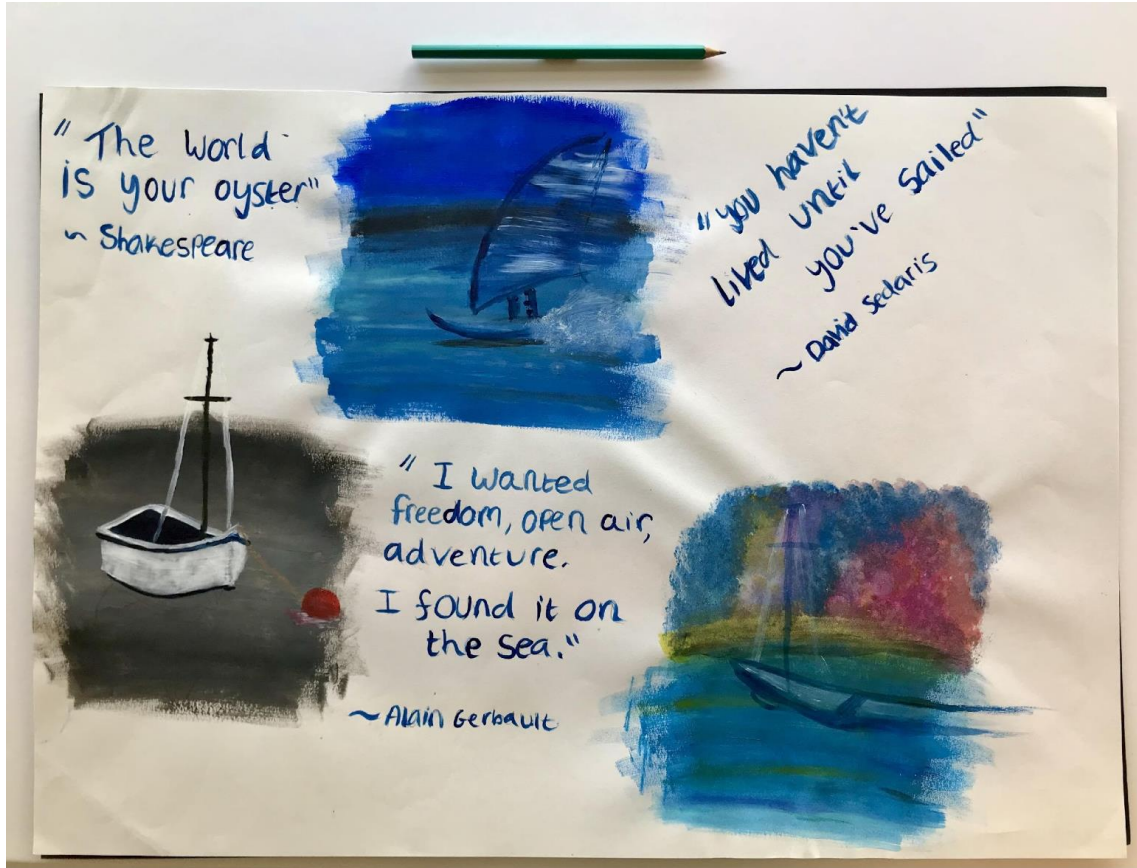


## PLANTS



## ASTRONOMY





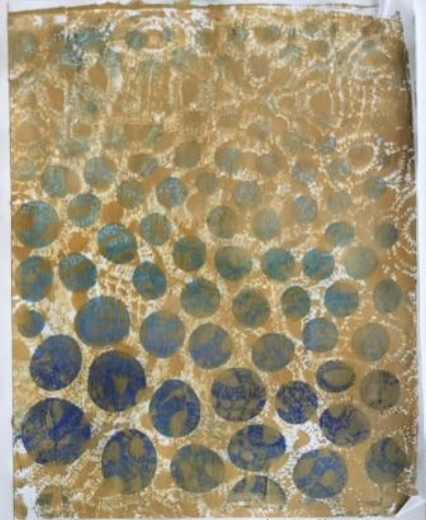
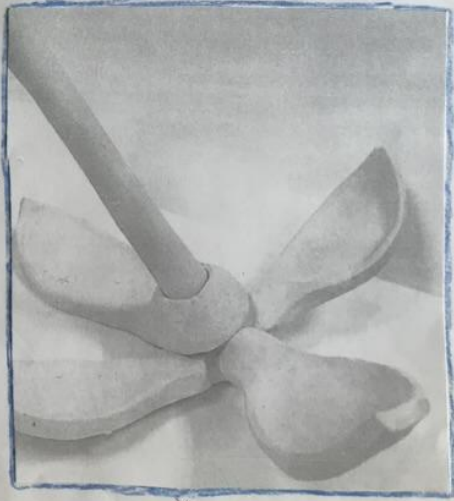
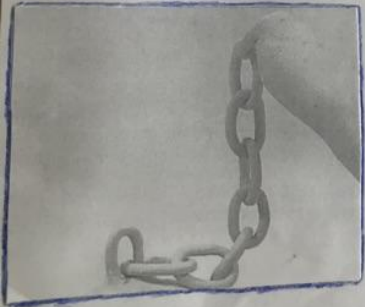




CLAY

VS

PHOTOS



I have been experimenting by using different forms of media. In this piece I have used jelly plate printing to try and display the patterns and textures in my project. I used things like rope, bubble wrap, doilies and templates to show interest in my paintings. The colours I used are sand, white, blue, turquoise. I also mixed colours to represent the sea and the beach. I think the colours work well together and are very aesthetic. The rope represents rope you would have on boats. The bubble wrap and circle stencils show bubbles and wash you may get in the sea.



# DESIGN IDEA





## Alison Jones

Alison Jones graduated with a degree in ceramics after studying at Camberwell College of Applied Arts. Since graduating she has taught pottery and sculpting at Sunningwell School of Arts. I have been looking at her work which is inspired by the Cornish seaside and boats and harbours. Alison Jones said that she used to spend a lot of time in Cornwall as a child and a lot of time on a boat which is where her inspiration came from.



In one of her pieces, she has used a sphere to represent the world. The proportions are distorted and exaggerated to make an abstract style. She liked making shapes like domes and spheres as she says you could turn it a bit and have a completely different view just like you would on the coast. There is dynamic sweeping lines on some of her clay pieces which also represent the movements of the tide.





