

GCSE 2016 Art & Design



U367

Background image: © solarseven
Origami: © Justin Hoffmann & Mark Bolitho Pearson Education Ltd



Component 1 – Fine Art Level 5



Candidate 3

Fine Art – Level 5

AO1	AO2	AO3	AO4	Total
13	13	13	14	53

Examiner comment:

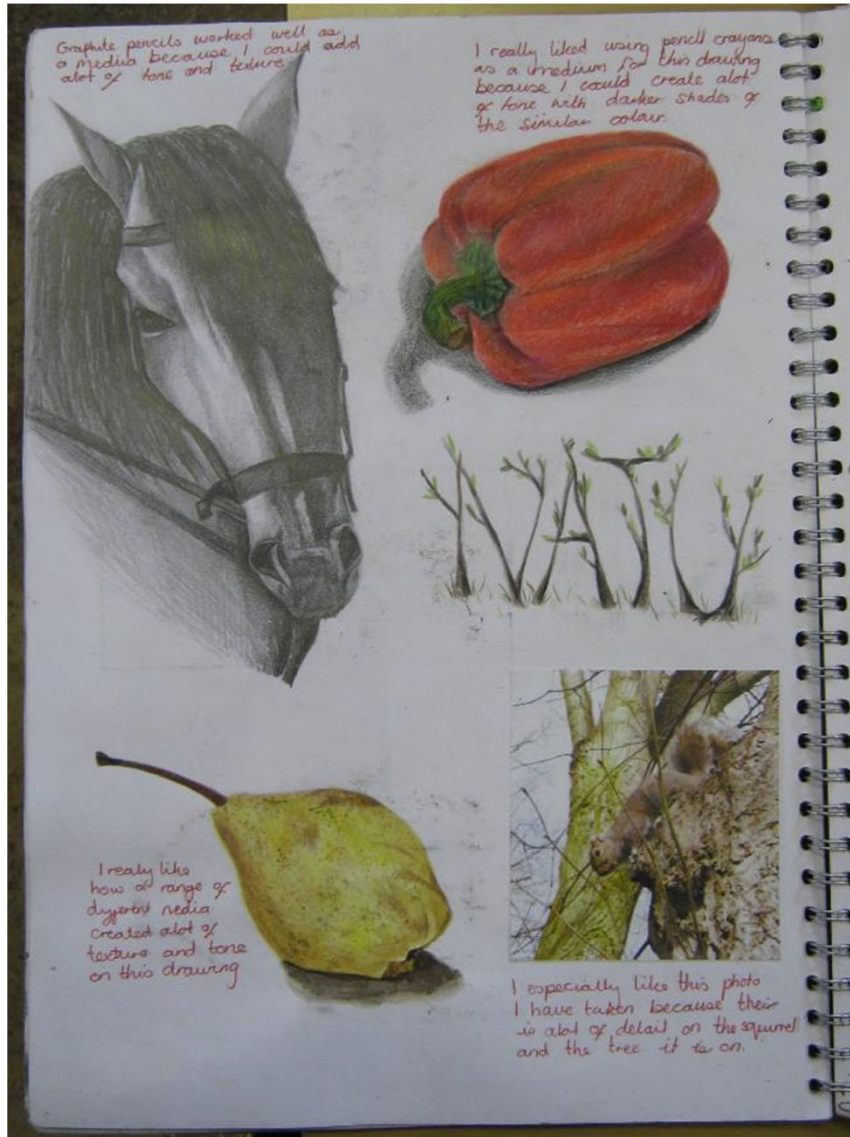
AO1: Just confident and assured ability – Level 5

AO2: Just confident and assured ability – Level 5

AO3: Just confident and assured ability – Level 5

AO4: Mostly confident and assured ability – Level 5

Total of 53 marks overall.



53 marks



Georgia O'Keefe
Paints mainly flowers shells and skulls. I like how she paints with bold bright colours and all her paintings are very large and detailed.

Fernand Léger uses a limited range of colours and creates very bright bold pieces of art. I like how he uses only shapes and lines to draw his subject. Also I like how his art is simple but effective.

Claude Monet uses bright colours and small brush strokes to create very detailed pieces. I really like how he uses a wide range of colour to add tone and detail.

Chris Peters paints mostly human skeletons. I really like how he paints the skeletons with a lot of detail. I also like how he shows them as being alive and living life as a human being.

Pablo Picasso uses different shapes and colours in his work to create different tones. I really like how he uses bright colours and simple shapes to show the human form.

Thierry Bisch mostly paints animals. I really like how he uses different tones to create all the textures on the animals. I also like how he concentrates on all the details on the animals and then paints a very plain background.

Salvador Dalí paintings are very imaginative and are all very different. I really like how he puts a lot of detail and imagination into his work. I also like how all his pieces of work are very colourful and very unexplainable.

Francis Bacon uses a range of very dull colours in his work but creates a lot of texture. I really like how he distorts the human face with many individual brush strokes. I also like how he creates a lot of texture with the paint.

Paul Cézanne uses a large range of colour to create bright pieces of art. I really like how he uses bright colours and a lot of tone to add detail to his work.

Jenny Sanilla uses a range of colour to create a very bold, detailed painting. I really like the way she creates a lot of tone and texture with a wide range of colours. Also, I like that she puts a lot of detail into her work.

53 marks

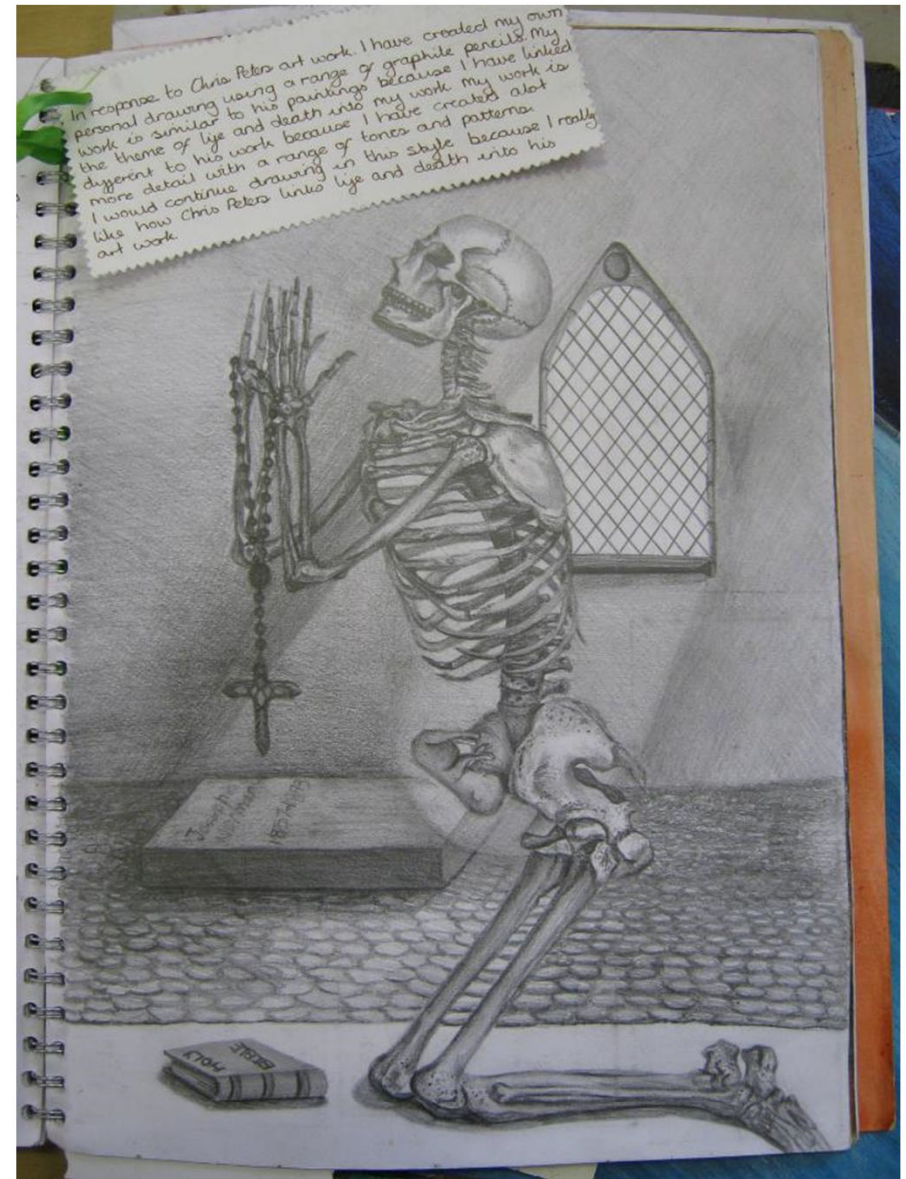


Chris Peters

Chris Peters is an American artist and creates all his oil paintings in his Los Angeles studio. His art work contains the classic symbol of vanitas still life and catholic religious paintings, all refer to the cycle of life and death, and the promise of resurrection. Vanitas is a type of symbolic art work especially associated with Northern European still life paintings in the 16th and 17th centuries. The word is latin meaning emptiness a common vanitas symbol is the use of skulls this is a reminder of the certainty of death also the use of rotten fruit which symbolises decay like ageing this piece below is an example of this except his symbols include guns and money. This means that money can lead to bad events happening such as debt also money is thought to be the cause of all evil. The gun would also symbolise death but other vanitas artists would use other objects to represent the end of life. Pop surrealism art often has a sense of humour sometimes the humour is gleeful and sometimes its a sarcastic comment. The Pop links to Pop Art as it is connected to comics, punk music and street cultures all popular themes.



This art style is different to surrealism because their paintings were generally based on dreams and filled with familiar objects which were painted to look strange or mysterious. I think these pictures show different feelings and problems that people experience through life but everyone has the same start in life and the same ending.







53 marks



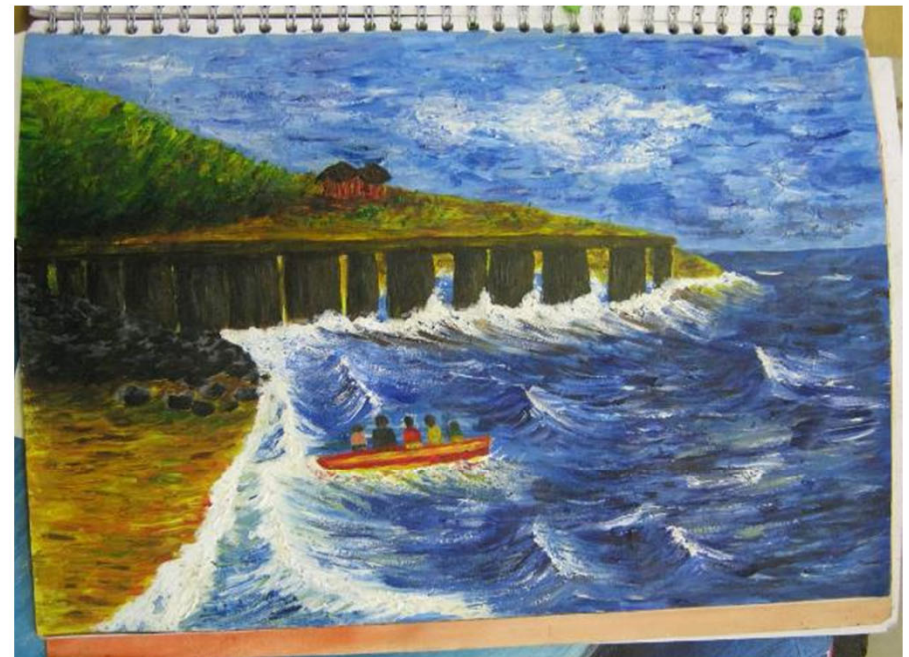
Claude Monet

Monet was born on the 14th of November 1840 - 5th of December 1926. Monet was a French artist who was the master of impressionism, he sketched landscapes in the open air so he could experience the feeling of atmosphere in the moment. He tried to capture the quality of light in nature, reflections in water and clouds. He chose primary colours and their complementary ones, pure vivid colours that were painted with small brush strokes. He loved painting landscapes but also did a number of portraits and still life paintings, all of them painted with oil paints. Monet's art style was impressionism. This art movement uses small thin yet visible brush strokes to emphasise the light as you can see really well in 'Impression, Sunrise' and 'House of Parliament'. Monet's work is different to other art because he would use light conditions and the effects to paint a very effective landscape. He would return many times to the same site at different times of the day and year to capture different effects.

I especially like how Monet uses a mixture of different bright colours so that he was able to create all the effects. I also like how the light in his paintings reflects in the water especially in his painting 'House of Parliament' because it creates a very warm feeling and calm mood.

This work has been influenced by Claude Monet. I have created my own personal painting using many bright acrylic paints. My work is similar to his paintings because I have used small brush strokes to create an impressionist's painting. I would continue painting in this style because I really like how Claude Monet uses many vibrant colours to create a very eye-catching painting.

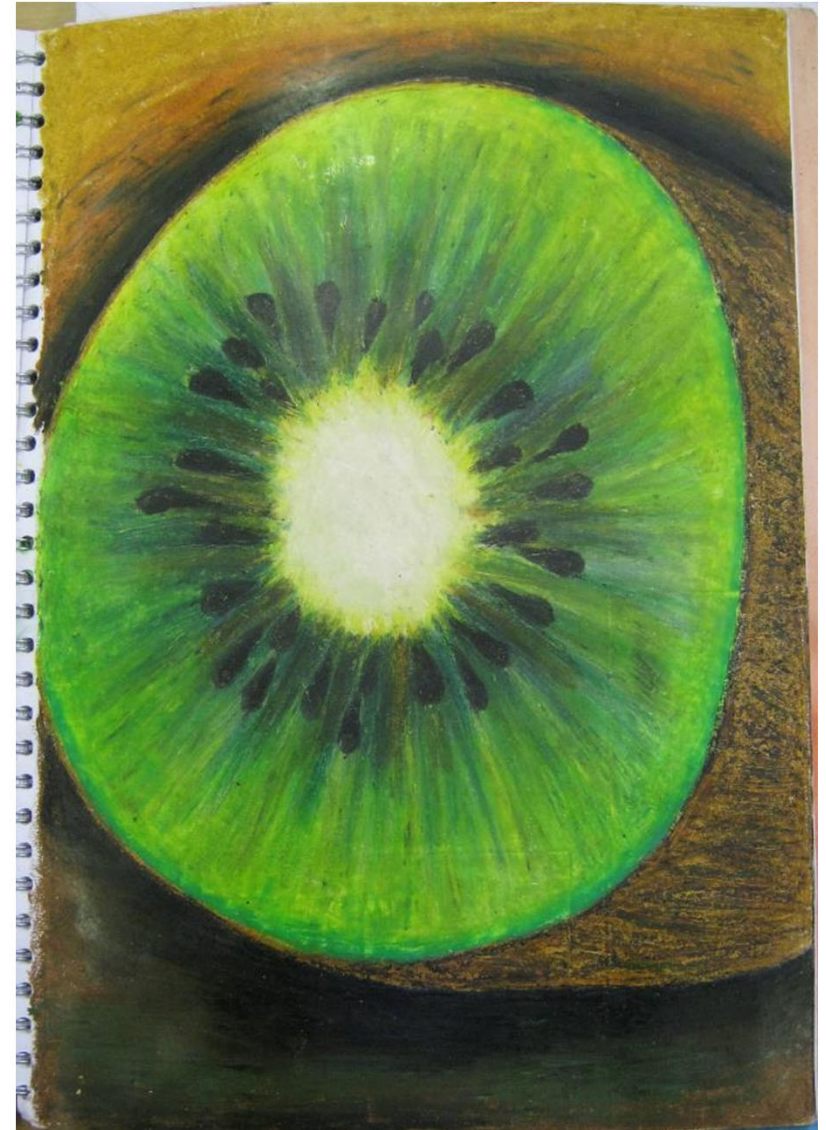


53 marks



This work has been created in response to Georgia O'Keeffe's paintings. I have created my own personal response using Oil pastels. This media allowed me to create many tones and textures. Also the colours are very bright and bold, so I was able to create a very powerful piece.

I would continue painting in this style because I especially like how Georgia O'Keeffe concentrates on all the small details of her subject and creates a very effective piece.



Georgia Totto O'Keeffe





Georgia was born on the 15th of December 1891 - March 30th 1985. She was a woman who was known for painting objects, flowers, trees and abstract shapes. Her work was very bold and bright. She used bright bold colors of oil so that people would have to see them. Being an artist when Georgia painted she used a range of colors to transform her subject and painted with oil.

Georgia used the art style Expressionism. An expressionist movement began in Germany in 1905. Expressionism put emotions in the world - an artistic subjective perception. Nothing is for objective emotional aspects, words or ideas.

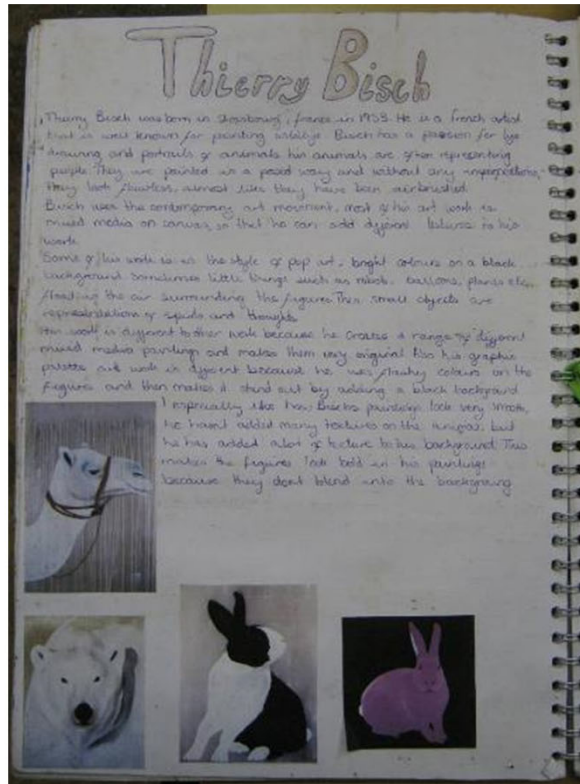
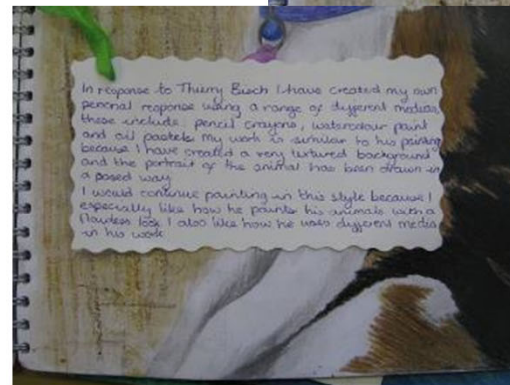
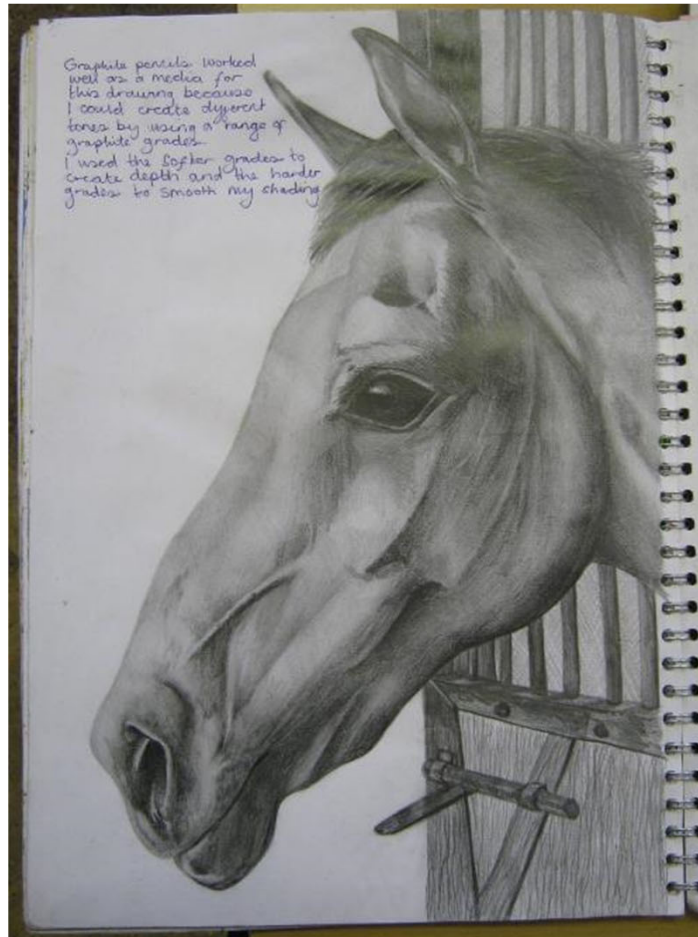
Georgia was a pioneer in other art because she created a range of beautiful and unique pieces of work. She painted these beautiful original abstracts with bright colors. She would make paint the atmosphere, looks and textures of her objects so that her paintings would be very dramatic.

I especially like how Georgia used many colors and textures in her work. She used bold colors and textures to create a very powerful piece. She used oil pastels to create the colors and textures.

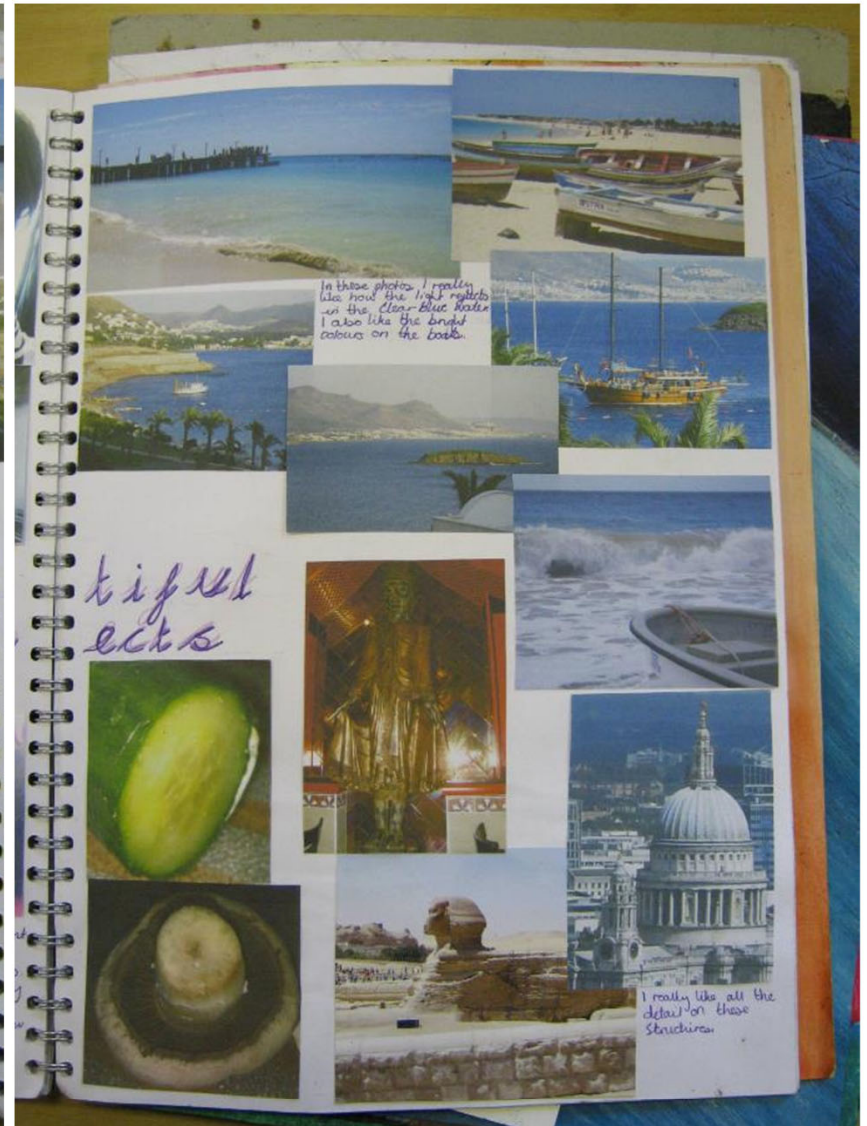
So they look very sweet.

53 marks



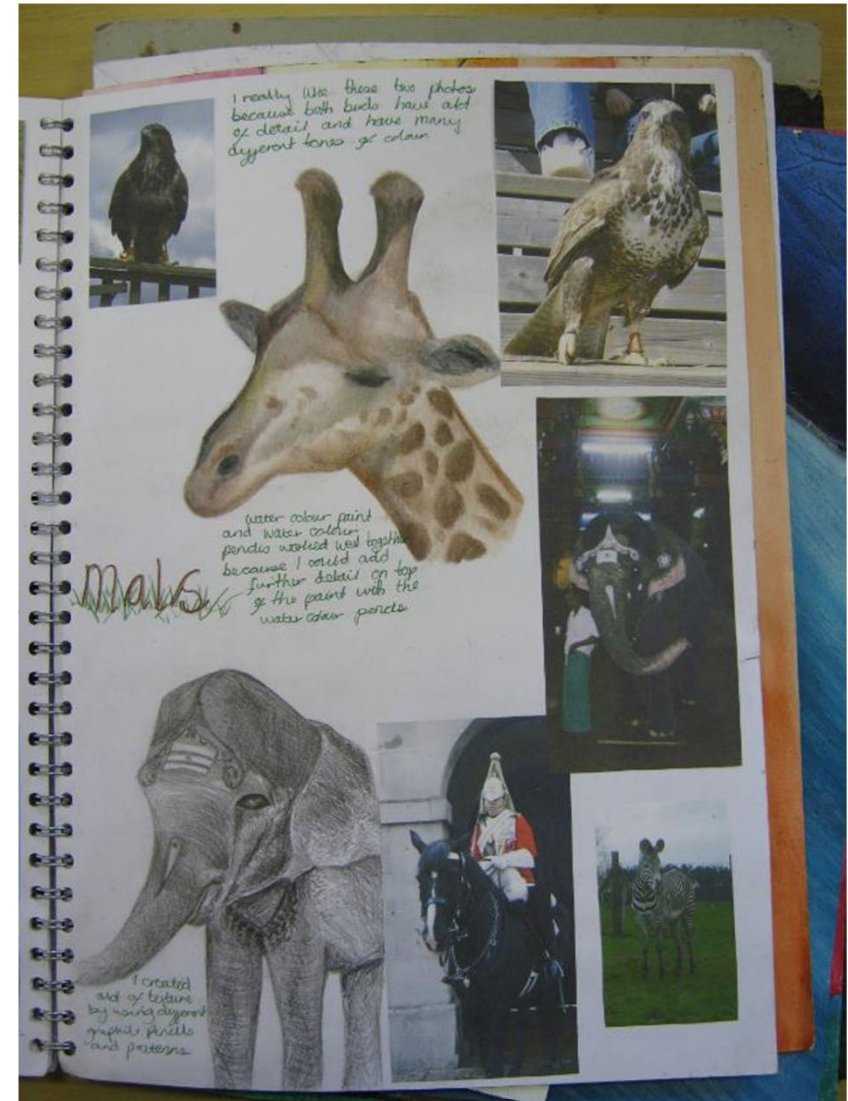
53 marks



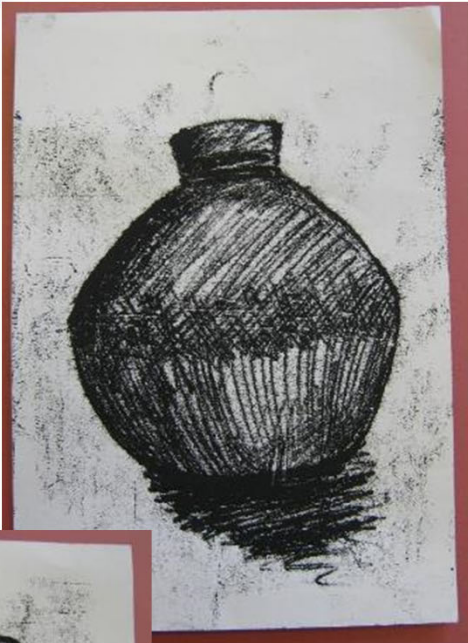
53 marks



53 marks

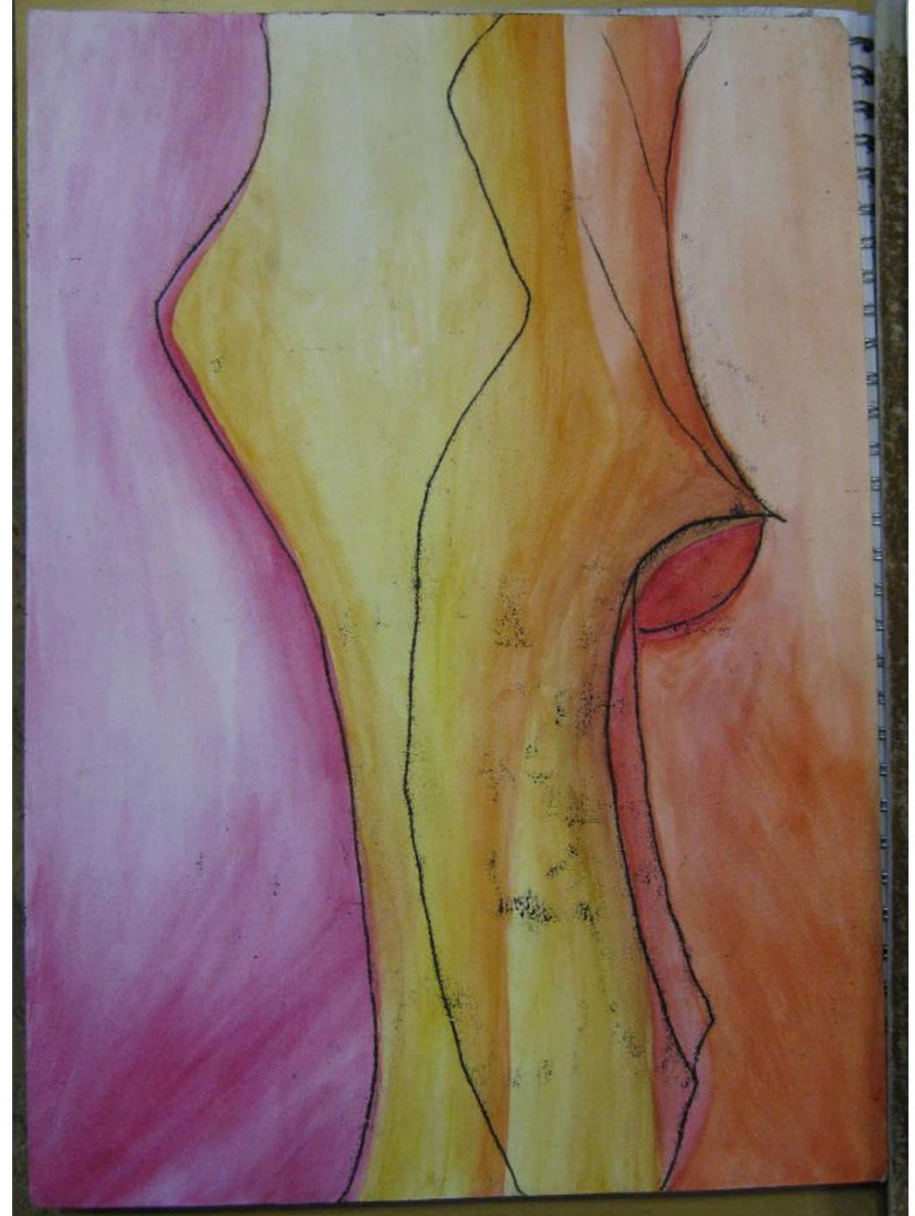


53 marks



I have chosen different animals and drawn sections of them and added various media. These drawings are similar to Georgia O'Keefe's style because they are enlarged sections of a subject. They are different because Georgia O'Keefe's work is of shells, flowers or bones. I really like this style because this work is very abstract. Although I could have taken smaller sections to make them look even more abstract. I have chosen the section of the horse's head to be developed further because I liked the shapes and size of the sections.

53 marks



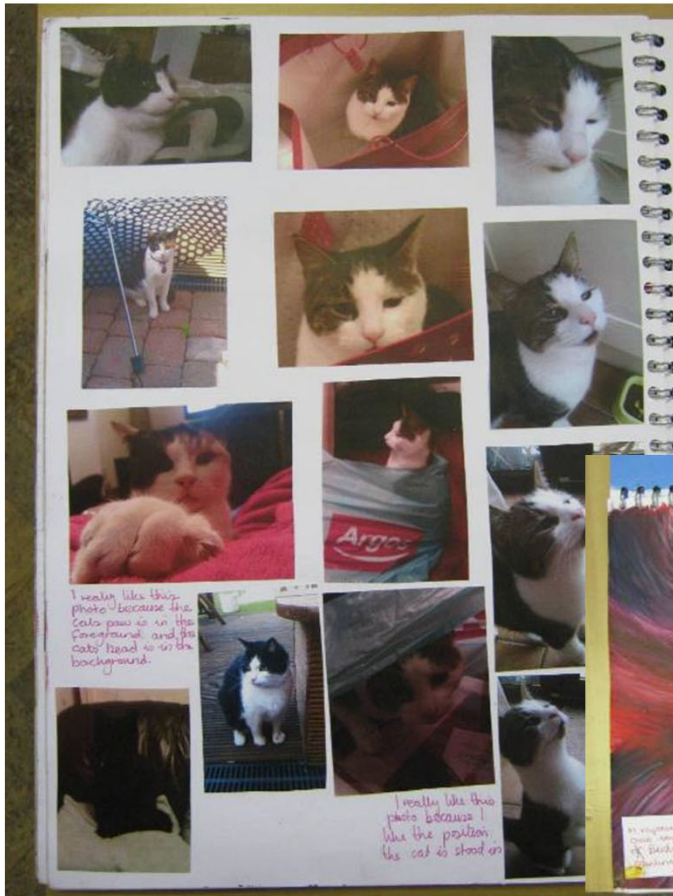
53 marks

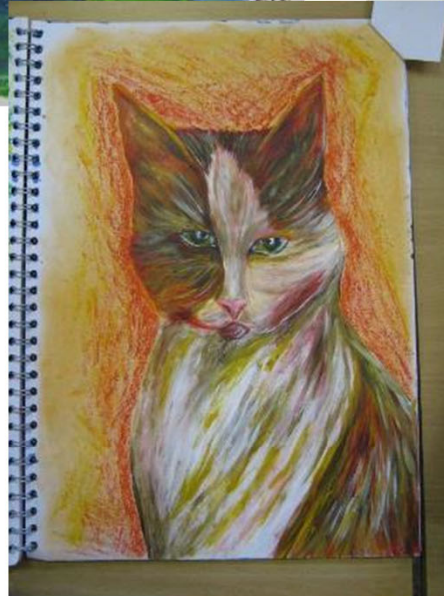


53 marks



53 marks

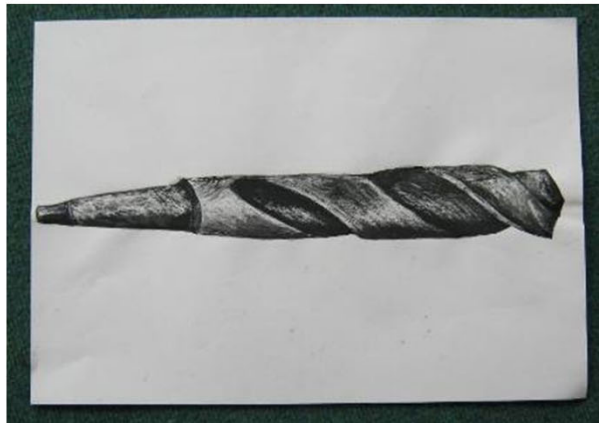
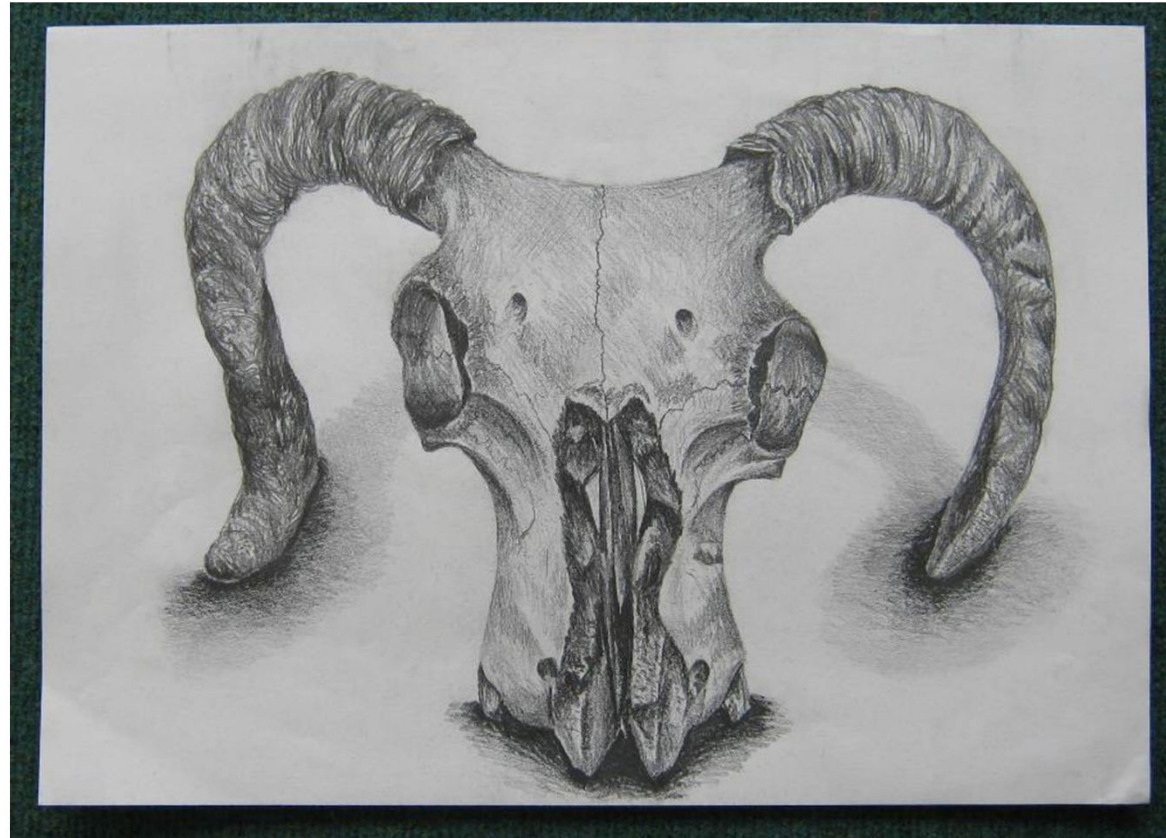




53 marks



53 marks



53 marks



53 marks



53 marks



53 marks