



# Component 1: Fine Art Standard Mark – 48

	AO1	AO2	AO3	AO4	TOTAL
Mark	12	13	11	12	48
Level	4	5	4	4	
	Fully competent and consistent ability	Just confident and assured ability	Mostly competent and consistent ability	Fully competent and consistent ability	

Keyword descriptors from the taxonomy:

Informed  
Purposeful  
Secure

Engaged  
Skilful  
Thoughtful

Cohesive

# Examiner comments

This Fine Art Component 1 submission consists of a square sketch pad and a large painting on canvas for the final outcome. Images of the work selected here reflect the characteristics of work placed at the top of Performance Level 4, Competent and Consistent performance with a mark of 48/72.

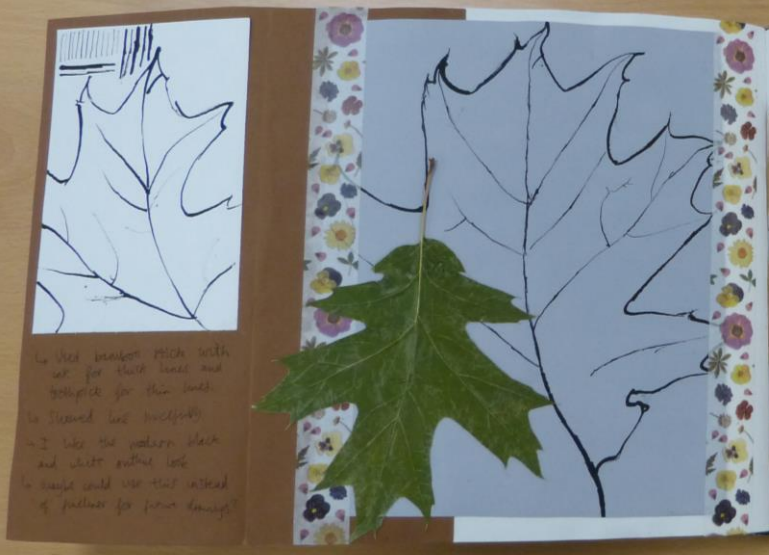
The theme of this project is 'Structures & Surfaces.' A visual mood board of potential contextual sources to study is produced containing artists such as Keith Dotson and Antonio Mora. The candidate decides to focus on the structure and surface of natural forms when responding to the theme. A bamboo stick and toothpick are used to create experimental line drawings of a leaf. A skilful recording of a sunflower is made which evidences competent and consistent control of the formal elements. Throughout the project primary source photographs of natural forms are taken and then recorded in various media.

The candidate analyses the work of Jim Dine through written analysis which shows accurate use of art terminology. A transcription of 'Nancy's Garden' (1984) is made using smudged charcoal. Ideas of combining natural forms with human-made backgrounds and examining the lifecycle of a flower are explored. Relevant annotations are made throughout the creative journey in this secure and engaged project.

The flower paintings of Van Gogh inspire the candidate to produce their own paintings in his style using natural vegetation from their own garden. This starts to lead them on their journey towards their final outcome. A decision is made to focus on an image of a decaying leaf. The candidate explores using tissue paper and fabric as a base for imagery to create texture in their work. They develop their painting technique through recording a photo of a leaf and produce pencil sketches for the layout of their final outcome. Finally, they produce a final piece plan which fully shares their intentions.

The candidate starts the final outcome by sticking tissue paper onto a canvas to achieve their desired texture. Several leaves are then painted on top with a large yellow/green leaf being the main focal point. This outcome is clearly informed by artists studied throughout the project and forms a cohesive conclusion.

For the submission to move into Performance Level 5, the candidate would need to produce a fully refined and resolved outcome showing advanced technical skill. Ideas could be more perceptive and there could be greater evidence of risk taking.







**JIM  
DINE**

Jim Dine (James Dine) was born on the 16 June 1935, in Cincinnati, Ohio, U.S. Jim Dine has worked as a painter, sculptor, graphic artist and poet for over 60 years.

Dine has associated with multiple art movements over the years:

- Pop art: works that combine the painted canvas with ordinary objects of life.
- Neo-dada: use of collage & found objects.

Dine studied at the Boston Museum of Fine Arts School at Ohio University. Then in 1958, he moved to New York and became a part of the group of artists who created the art movement of "Happenings" (this elements of painting, poetry, music & dance.)

Jim Dine's artwork is in a sense autobiographical, and exploration and criticism of the self through a number of highly personal motifs.

# PHOTOGRAPHY

Natural (nature)  
plants / flowers  
↳ living vs dying  
plants  
subject = still life

human/  
man made  
background

contrasting humans  
vs nature

human background vs  
natural subject matter

blurring  
|  
colour contrasting  
plain background

black shadow/  
outline

shadows - Jim Dine inspired

plain background  
stand out  
makes image bolder

black, messy outline - takes  
from Jim Dine  
↳ into, fineliner contrast

same type of flower  
|  
dead vs blooming flowers  
|  
aging |  
|  
death / life

# ARTIST RESPONSES



- ↳ Black outline / shadow taken from Tim Bine
- ↳ Line and tone as a main theme
- ↳ Messy / sketchy look
- wilting flowers - idea of dying plants



- Messy / sketchy look - unfinished
- mixed media - pencil, fine liner
- colour vs muted colours such as black / brown
- contrast between dead and living (same flower)
  - ↳ symbolic of life + death





layers - messy/ sketchy look - Jun Dine inspired  
 ink + bamboo stick colour vs black/brown dipping/writing plants  
 make outline



Vincent Van Gogh was born in 1853. At the age of 27, he had decided he wanted to become an artist.

Training/ Experience:

- Worked at the international art dealer 'Goupil and Cie'. (Dismissed)
- Studied in Amsterdam
- Lay Preacher in Belgium
- Began to develop his style in Paris 1886-88.

Significant life events:

- After heated argument with Gagin, who he was living with at the time, he chopped his ear off. The morning after, he was admitted into hospital, but he continued to work.
- Hospitalised for his mental illness for a year - In this year he made 150 paintings!

style/ ideas:

- Van Gogh's personal style focused on colour - striking and bold.
- Careful markmaking
- Purpose was to express his emotion and individualism.
- Influenced expressionism and many other painters.
- I have chosen to study Van Gogh for his subject matter - mostly flowers + the natural world. I want to develop from using black and white - so bright colour is a theme.

- Death: On July 27 1890 Vincent Van Gogh walked into a wheat field and shot himself in the chest.



**CONTENT**

The painting consists of a pot of pink flowers with green leaves, ~~and~~ two yellow books stacked on top of a table with a lime green background. This relates to the theme of this project as the flowers seem to be giving a little - ~~metaphor~~ idea of dying versus living plants.

**FORM**

Personally I think the most important elements are shape and colour. I have previously looked at shape and colour. Colour is prominent - it has a bright background, but the pot and table is made up from some contrasting colour - lime green and purple. Texture of the flowers is also noticeable.

**MOOD**

(Created with oil paint) (Transcript on - acrylic paint) Quite a calm atmosphere is created. Although bright colour is used, the use of natural subject matter makes the painting seem quite peaceful and relaxing.



"Pink Flowers"

**ARTWORK ANALYSIS**



Other works of Van Gogh



**TRANSCRIPTION**

- "Pink flowers"
- Acrylic paint
- Shows colour effectively and presents it in an artistic way
- Maybe could have worked on showing more texture / details



Living plant protruding through dead leaves



Contrast of yellow / brown leaves



focal point

shown as a theme looks similar to Van Gogh style painting (Van Gogh)

Mixed media



focus on plant emerging



blurred background



life emerging



bold plant, blurred background

life emerging through death

mixed media

**CREATIVE RESPONSES**



living plants growing through dead ones

plants demonstrating living vs dying rising above death

simple colour (black) background

dead leaves / dark background and filling away

bird's eye view

focus on living interesting mix



bright green above brown / black - dark colours



focus on living interesting mix





# RESPONSES

## - TESTING

Wanted to further explore the idea of mixed media.  
 - print - Use top and fabric and for tissue scrunched up create texture.  
 - Maybe work on introducing dyed / sharp to show work and texture

print on top of fabric



print on top of B.S.W. in colour  
 ↓  
 ↓ don't colour (life) emerging through  
 ↓ due to pressure printing needs to be able to dig in  
 ↓ colour contrasts black and white

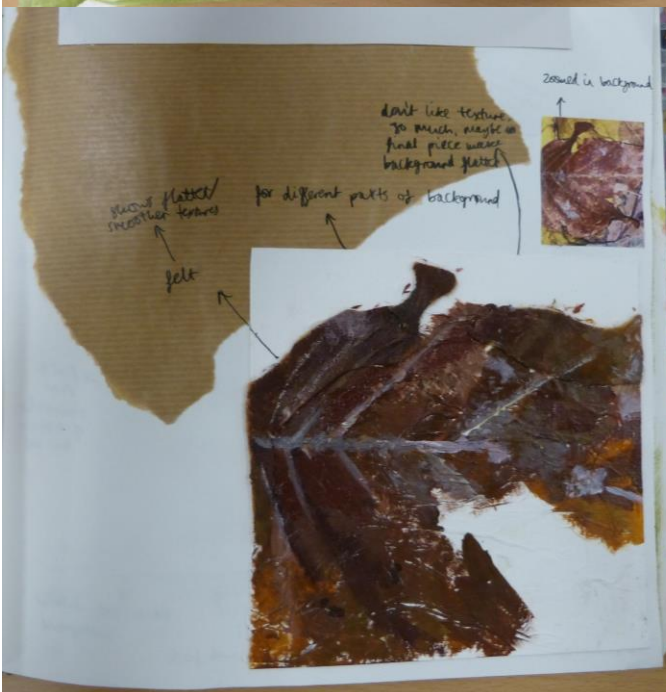


print on top of fabric with different fabrics (low different colours)

print on top of tissue paper

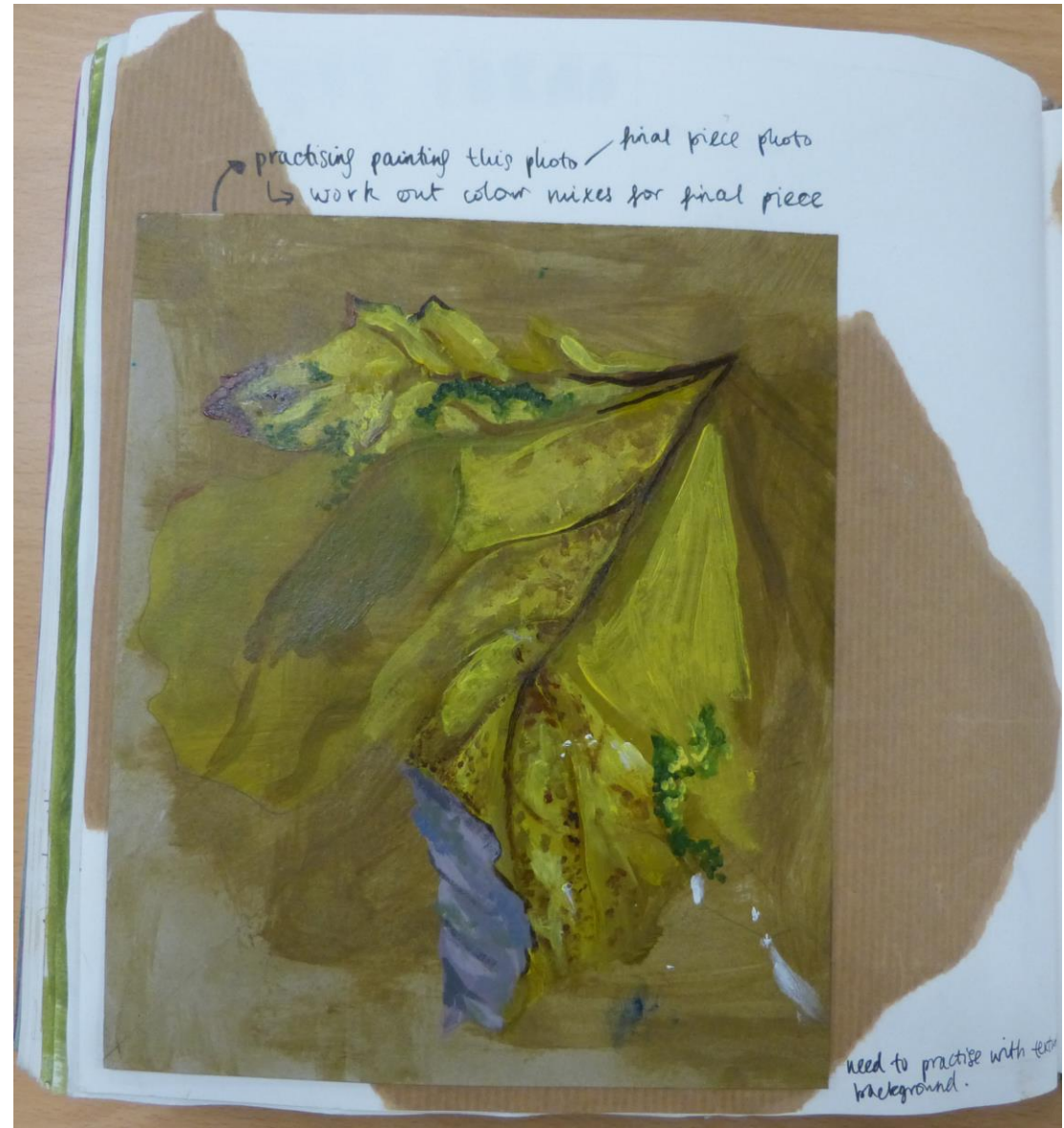
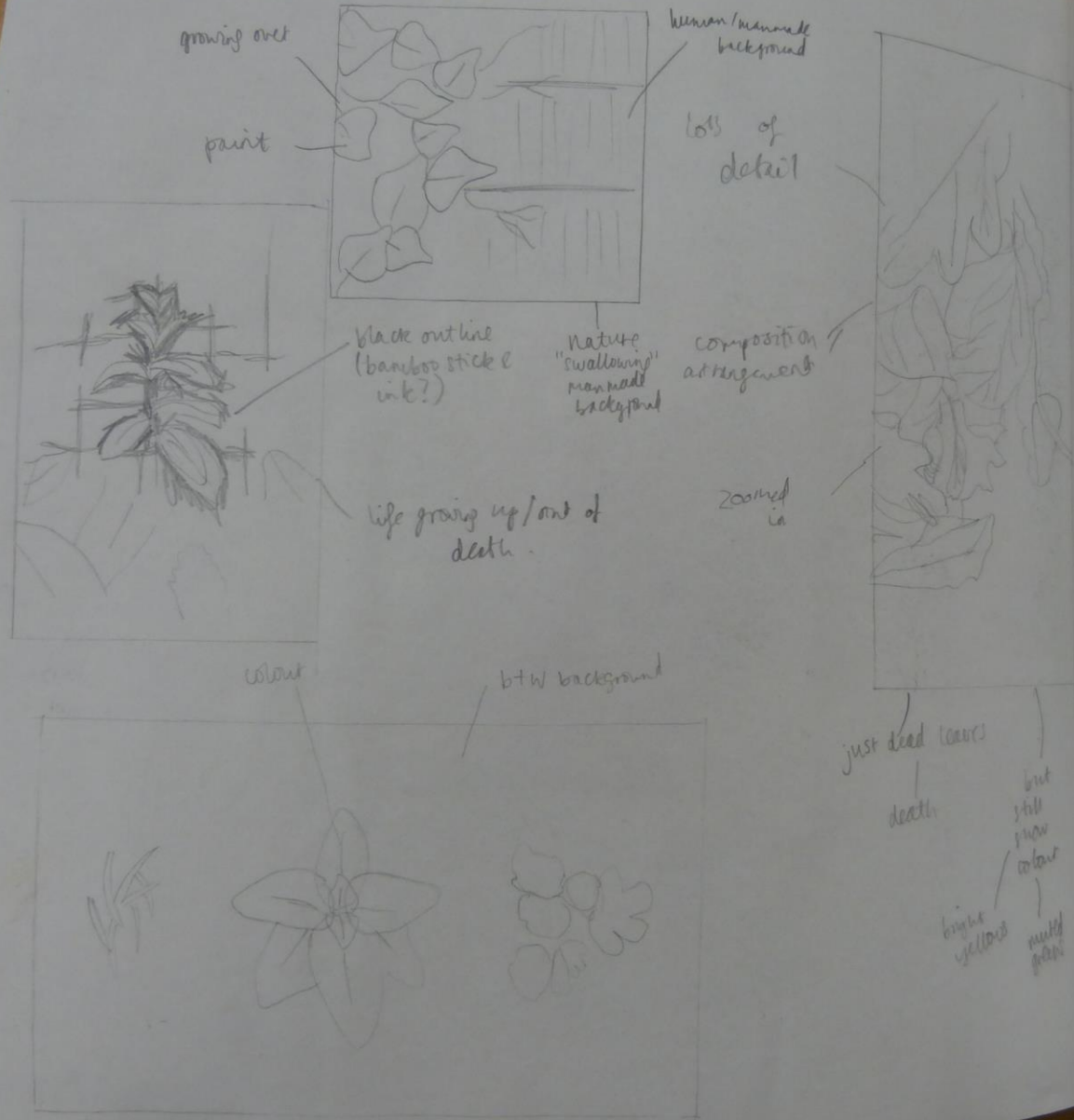


colour contrasts the black + white  
 ↓  
 ↓ black outlines - brown back makes main subject using flesh - border



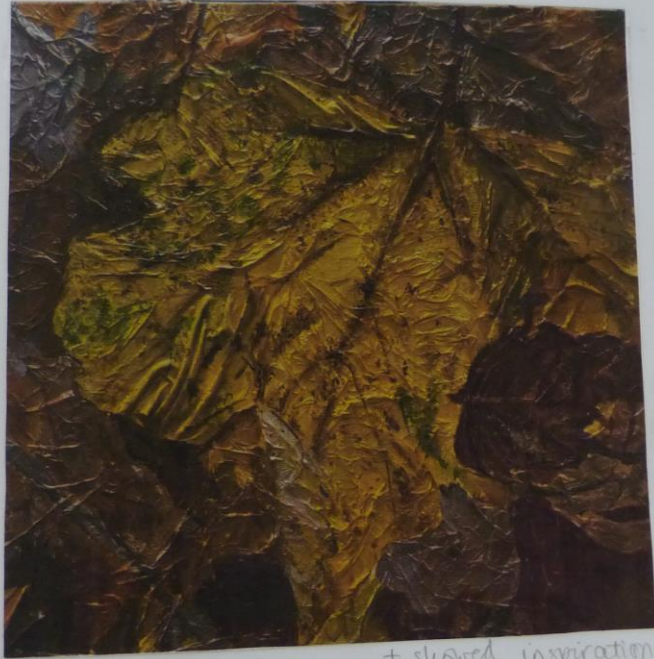


# LAYOUT IDEAS





# Final Piece



decaying leaf  
 theme of decay  
 wrinkling dyeing

Van Gogh used paint

+ showed inspiration from Jean Dine & Van Gogh by subject matter

- + I successfully showed tone & texture
- + showed detail of the decay-
- + prepared background with tissue paper and fabric - emphasises rough texture
- shown more detail in background could have been possible if spent more time on it

# Final Piece Plan



really show green & brown parts  
 emphasises theme of DECAY  
 fabric to show folds in leaf & texture  
 acrylic paint  
 deepen colour / darken to show DECAY  
 fold fabric in lines of leaf  
 fabric here to show rough texture  
 flat to show shininess of texture of this leaf  
 paint on top of tissue paper  
 mixed media  
 background painted in less detail  
 focus on yellow leaf  
 using acrylic paint  
 print main leaf more detailed  
 variety of textures  
 plain / not detailed background  
 50 x 50 canvas - paste tissue paper & fabric background first



Outcome  
Painting

