

# Component 1 Fine Art

## Standard Mark- 29

Performance Level 3: Emerging Competent

	AO1	AO2	AO3	AO4
Mark	6	8	7	8
Performance Level	2	3	3	3
	Fully basic ability	Mostly emerging competent ability	Just emerging competent ability	Mostly emerging competent ability

Keywords from the taxonomy:  
**Growing control, Endeavour**

# Moderator commentary

This Fine Art Component 1 consists of an A4 sketch pads, and several mounted sheets of outcomes. Images of the work selected here reflect the characteristics of work within Performance Level 3, Emerging Competent, with a mark of 29/72.

The overarching theme of “Inception’ inspires the candidate to consider the ‘beginning of a loving relationship’ as a starting point for a series of predictable observational drawings of objects that symbolise ‘love’. A still life of an animal heart and flowers is photographed, and the candidate produces a coloured pencil study showing some growing control over recording the tonal values within the seen forms. They endeavour to describe their developing ideas: “Love is said to come and grow from the heart, hence the flowers growing out of the heart”.

Ideas are refined through a predictable photo shoot of a young couple. From selected photographs, a lino print, and dry-point etching are executed with growing control.

The candidate shows emerging competency across a range of recording techniques and shows particular strengths in photography, evidenced in a circular photocollage of repeated imagery. A visit to the Tate Britain enables the candidate to gather relevant references including “Love among the Ruins’ 1894 by British Artist Edward Burnes Jones. Annotation does not move beyond being descriptive.

The idea of love and relationships are broadened through visual references to paintings by British Artist David Hockney. Further photo shoots of hands are made, from which an A2 acrylic painting is created. Here, the candidate endeavours to use a limited palette of blue hues, as well as using stippled marks to create areas of texture.

In order for the submission to move more securely into Performance Level 3, Emerging competent, the candidate could demonstrate greater confidence in developing less predictable ideas. For example, the tentative investigations into Australian Artist Ron Mueck’s sculpture ‘Young Couple’ 2013 presented an opportunity to consider more complex concepts within love and relationships.

thesis  
 productivity  
 the beginning of an organisation,  
 official activity, or agreement  
 reptiles  
 conventional purpose  
 outbreak  
 preface  
 myth  
 religion  
 conclusion  
 Islam  
 ethnicity  
 genesis  
 design  
 January 1st  
 cultivation  
 fertilization  
 cognition  
 root  
 GOD  
 exemplification  
 rudiment  
 founding  
 commencement  
 installation

indigenous  
 morality  
 suspicion  
 baby  
 coming  
 source  
 family  
 Latin  
 inspire → begin, take in hand  
 Latin  
 incepto  
 inception  
 LATE MIDDLE ENGLISH  
 common  
 intuition  
 national  
 tribe  
 conception  
 knowledge  
 nascence  
 native  
 admission  
 dawn  
 progeny  
 Creationism  
 Sacred  
 incept

Inception

inauguration  
 segregation  
 money  
 expectation  
 birth  
 nature  
 life  
 standards  
 the establishment or starting  
 point of an institution or activity  
 CONTRACEPTION  
 old  
 communion  
 ideology  
 idea  
 division  
 enlightenment  
 incipient  
 assurance  
 pregnancy  
 originator  
 hope

persuasion  
 induction  
 mammals  
 origin  
 established  
 infancy  
 THE BIG BANG  
 classification  
 derivation  
 sacrifice  
 Jewish power  
 judgment  
 outset  
 commencement  
 theory  
 onset  
 Rin  
 growth  
 orthodoxy  
 nsc  
 capiousness  
 family religion  
 learning  
 nobility  
 demonstrationology  
 initiation  
 assumption  
 acceptance  
 establishment

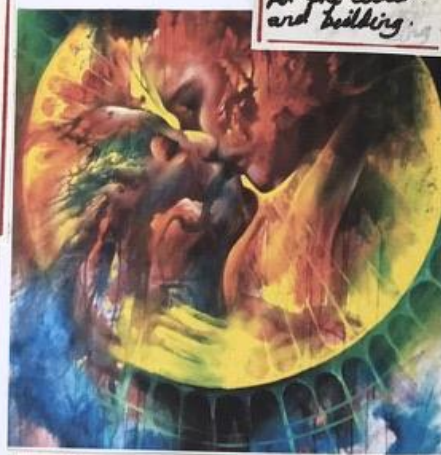
arrival  
 impression  
 across  
 sect  
 inceptive  
 race



Ylli Haruni -  
Romance  
in  
Venice

This painting  
uses the same  
colours of the  
couple's clothes  
for the water  
and building.

This painting shows  
a representation  
of love inside a  
sun with hundreds  
of colours is like a  
burst of energy like  
a creation, the  
big bang. You can  
also see planets in  
them showing a  
connection to  
nature.



Jakub Kufajna



Otha Darchuk  
Shows two elephants  
in love. This shows  
how one thing that  
humans have in  
common with other  
species is our  
ability to love...

Otha Darchuk

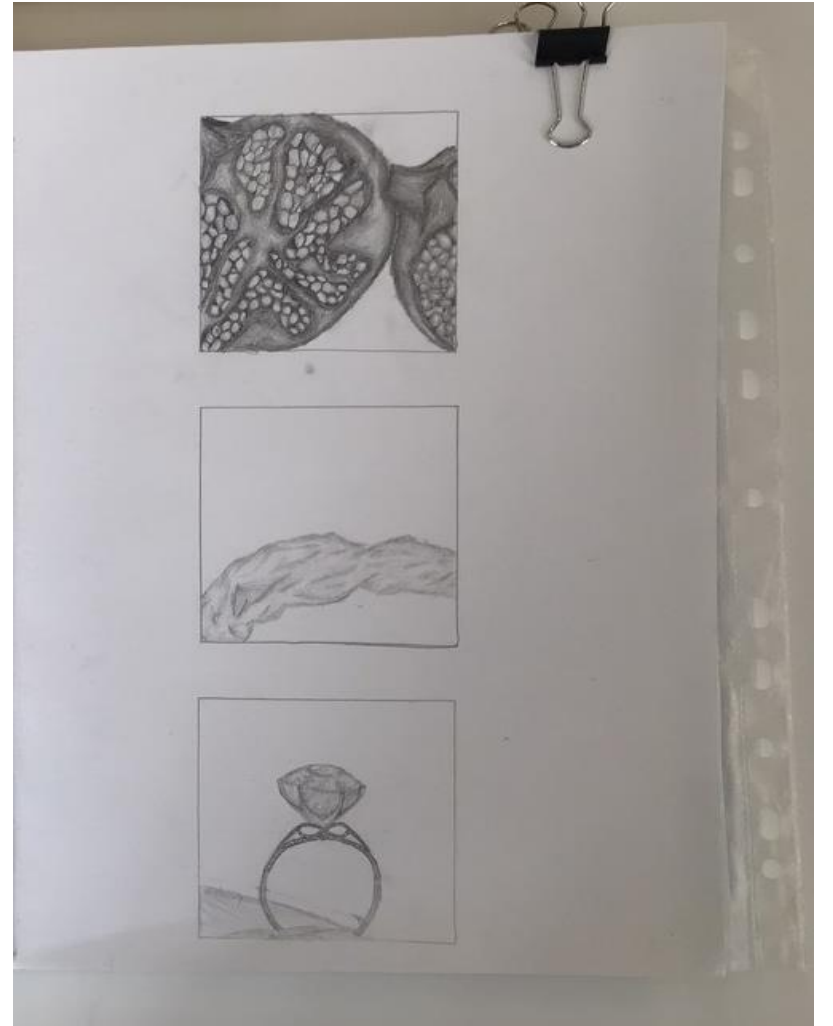
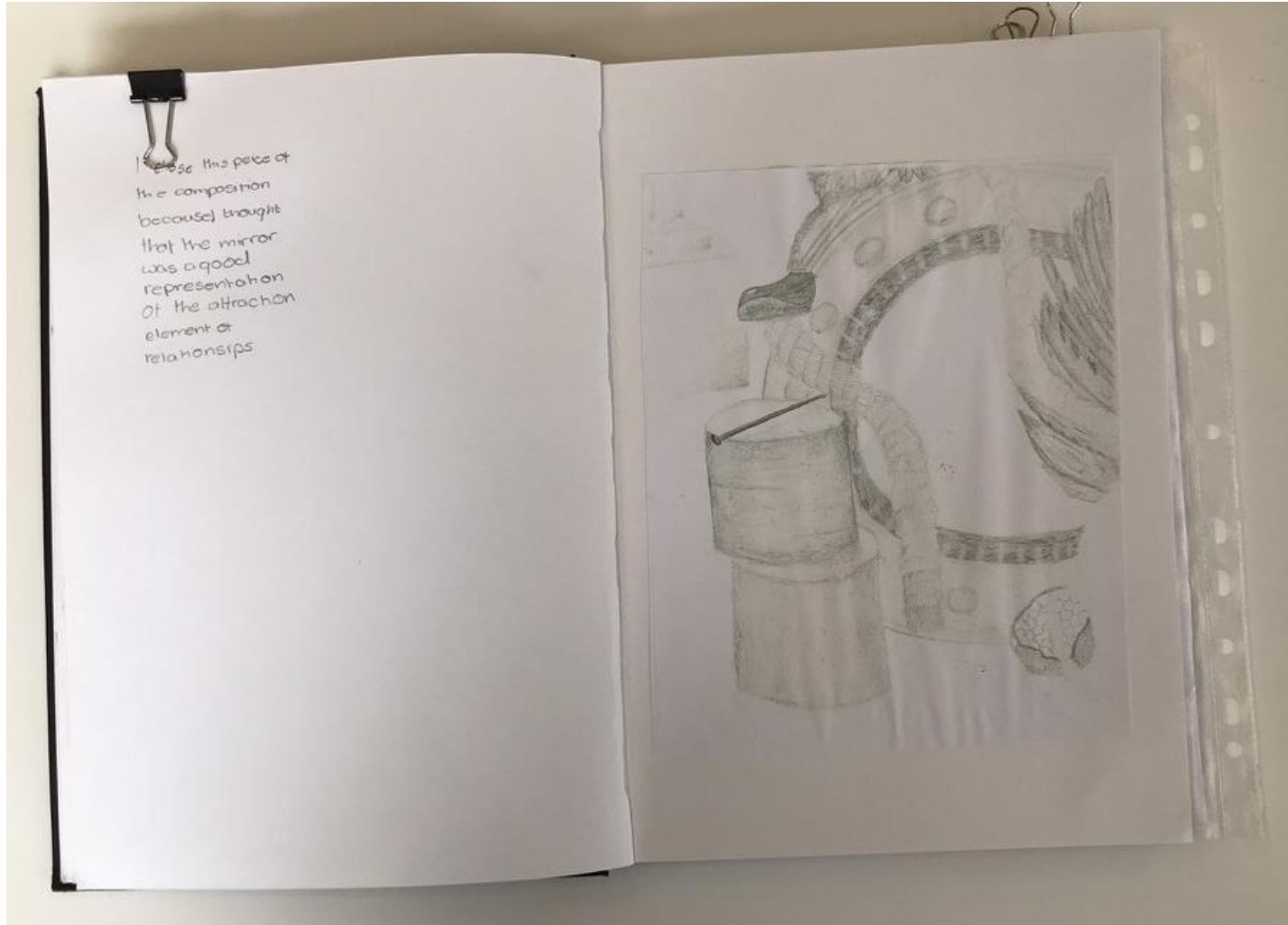


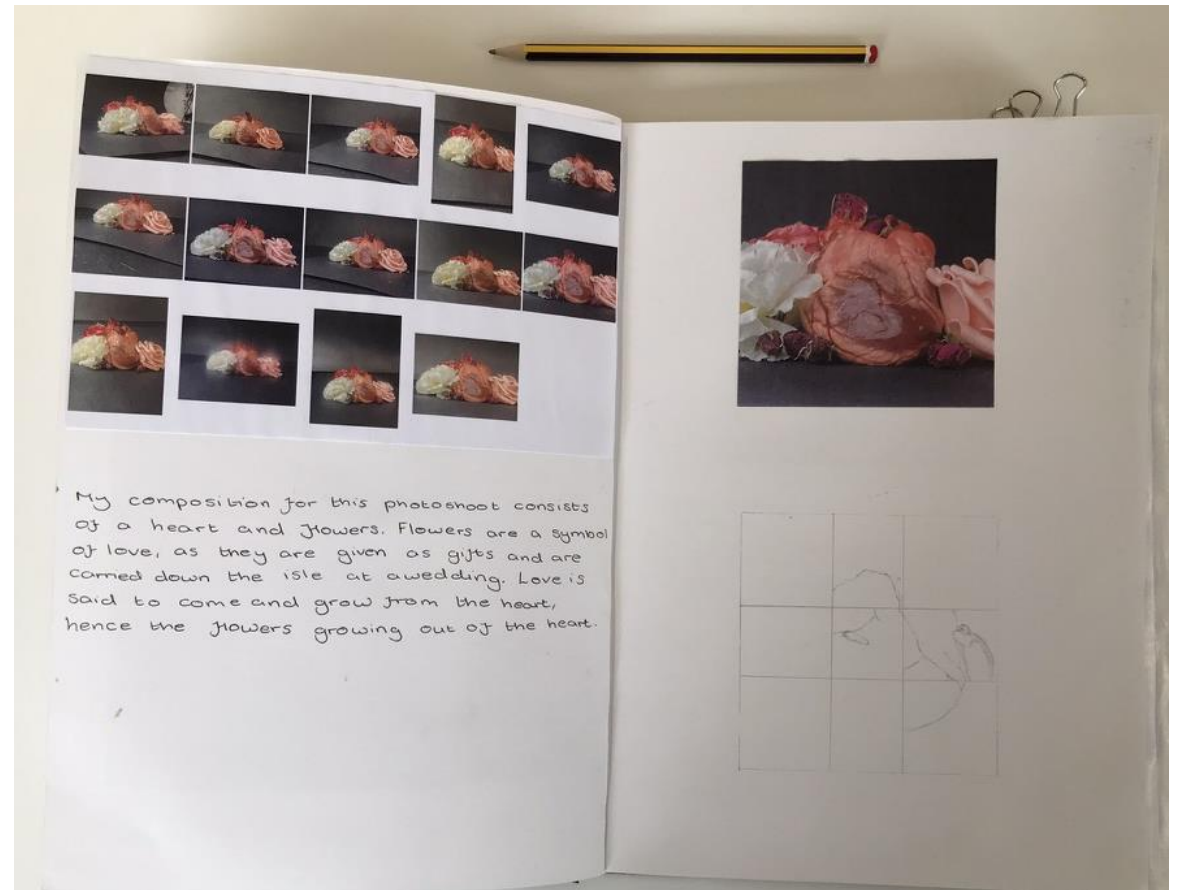
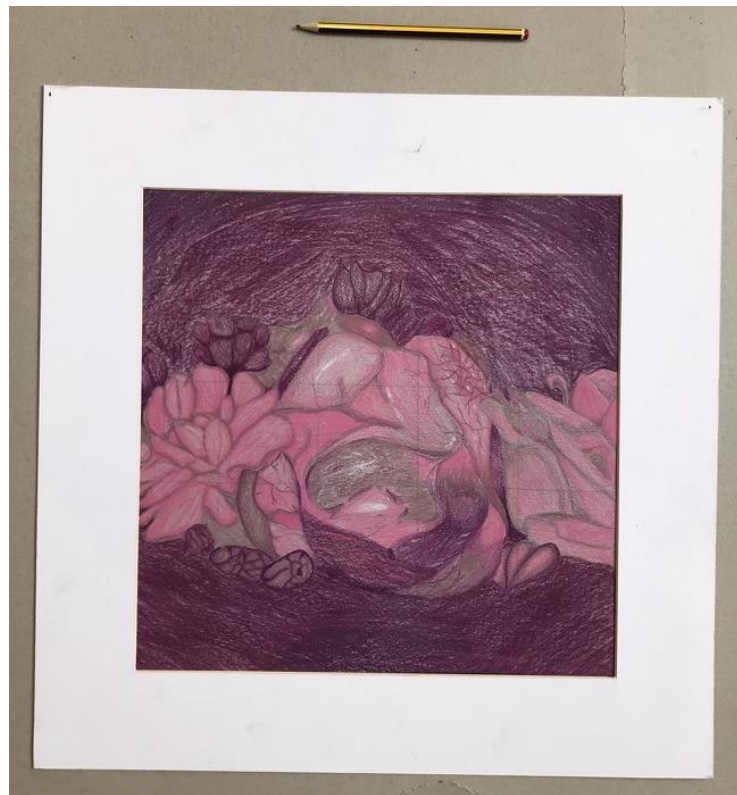
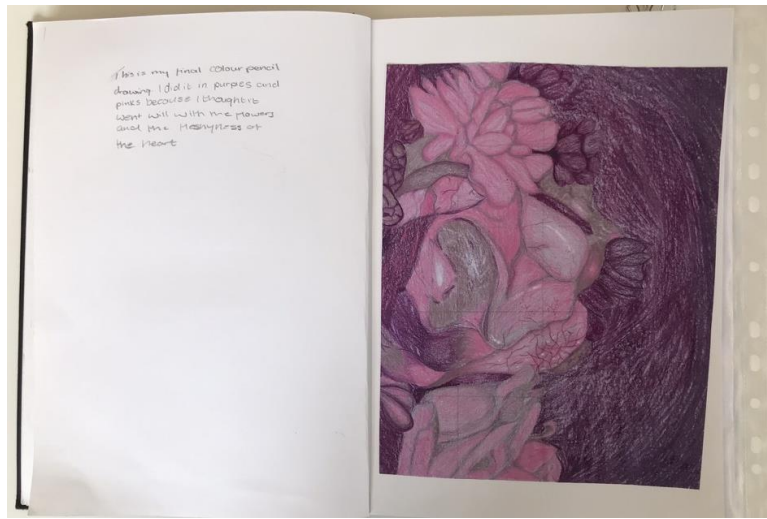
Arthur Samdoff - Kiss me




Tomasz Alen Kopera








Edward Burne-Jones: *Love Among Ruins*. Pre-Raphaelite painter is the artist behind this painting which is based on the poem 'Love Among Ruins' by Robert Browning.



LOVE AMONG RUINS, EDWARD BURNE-JONES  
This sets up a contrast between the powerful strength of love and the simplicity and perfection in 'natural' normal life.



TATE BRITAIN

In romantic-style art, a lot of detail is put into the hands, especially in 'Love Among Ruins'.




In art, hands are seen as intimate in very subtle ways. Hands are used in lots of artworks to show love and a connection between a pair of people.

This painting is of the two poets Sappho and Emma embracing one another on the island of Lesbos. Sappho's work focuses on the frustration and joy of love. Her most famous poem is an invocation to the goddess of love Aphrodite to help her in her relationship with a woman.





Tate Britain



William Mulready

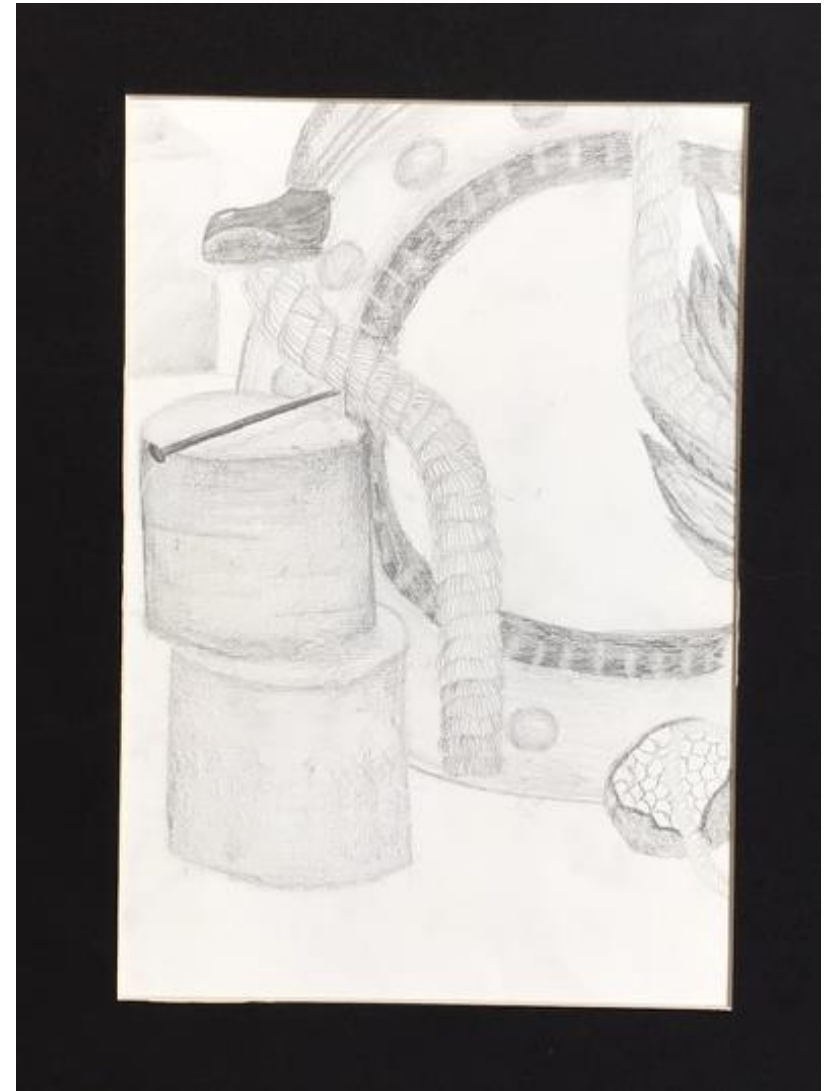
This is a portrait of Elizabeth Dora and Mary Anne, the card game and the title suggest their race to marry in their social class was important. This represents love as a game and one that these women would play.



It often overstates and the parts are bumps

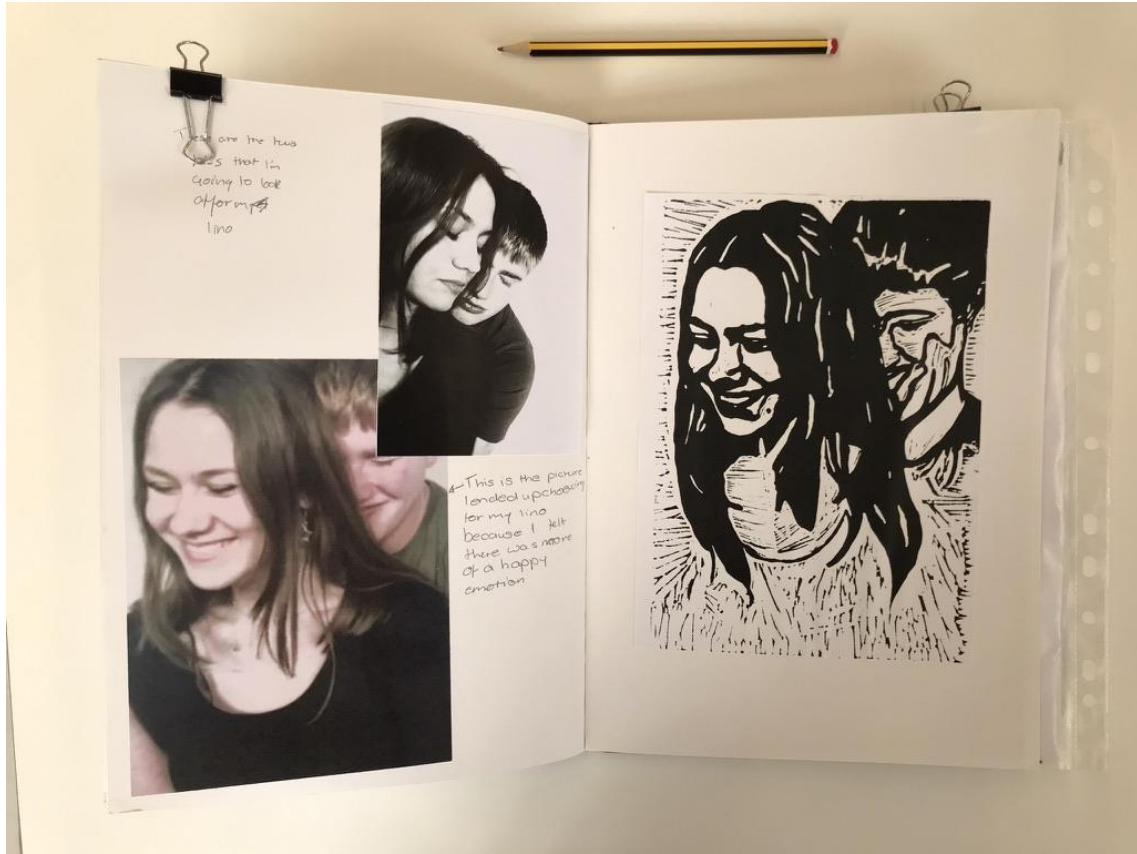
This painting is one of the most valuable paintings ever produced in England. The theme of crossing water illustrates a need of passage to adulthood.





29 marks - FA01 C1









Young Couple

From the front, this looks like a sculpture of a teenage couple in love with each other. However, if you were to look at the back of the sculpture, the message would be less clear. Unlike Muek's other sculptures, this one is life-size, which is significant because they appear to us as equals. The boy restraining the girl is clear of abuse, and the choice to put this behind the m. where you can't see is purposeful, as it represents that you can't always see what's going on.

### Ron Muek

Ron Muek was born in Melbourne Australia on the 03 May 1958. His parents worked as toy-makers, and this is where his art started. In the toyshop, he would explore with puppetry and model-making. On growing up he began to work as a puppet maker for the famous Jim Henson, creating characters on 'Sesame Street' and 'Ludo' in the film 'Labyrinth'. When he started working on his own art, making hyper-real figurative sculptures, each



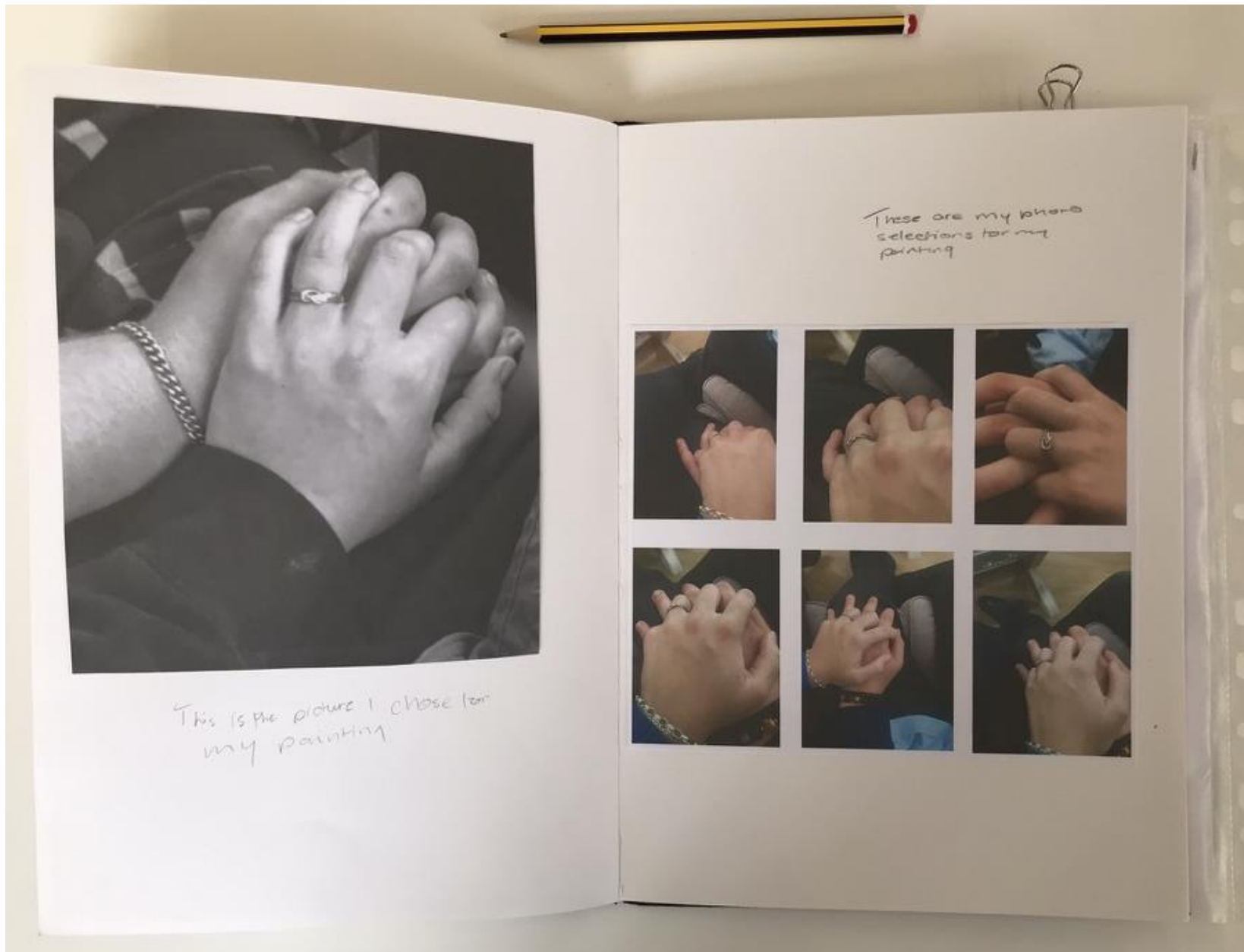
work would take more than a year to create. The process all starts with a sketch, then a clay model, which is then cast in either silicone or polyester. His artworks suggest complex psychological states. They make people think. The size of his works are also really meaningful.



Couple Under an Umbrella



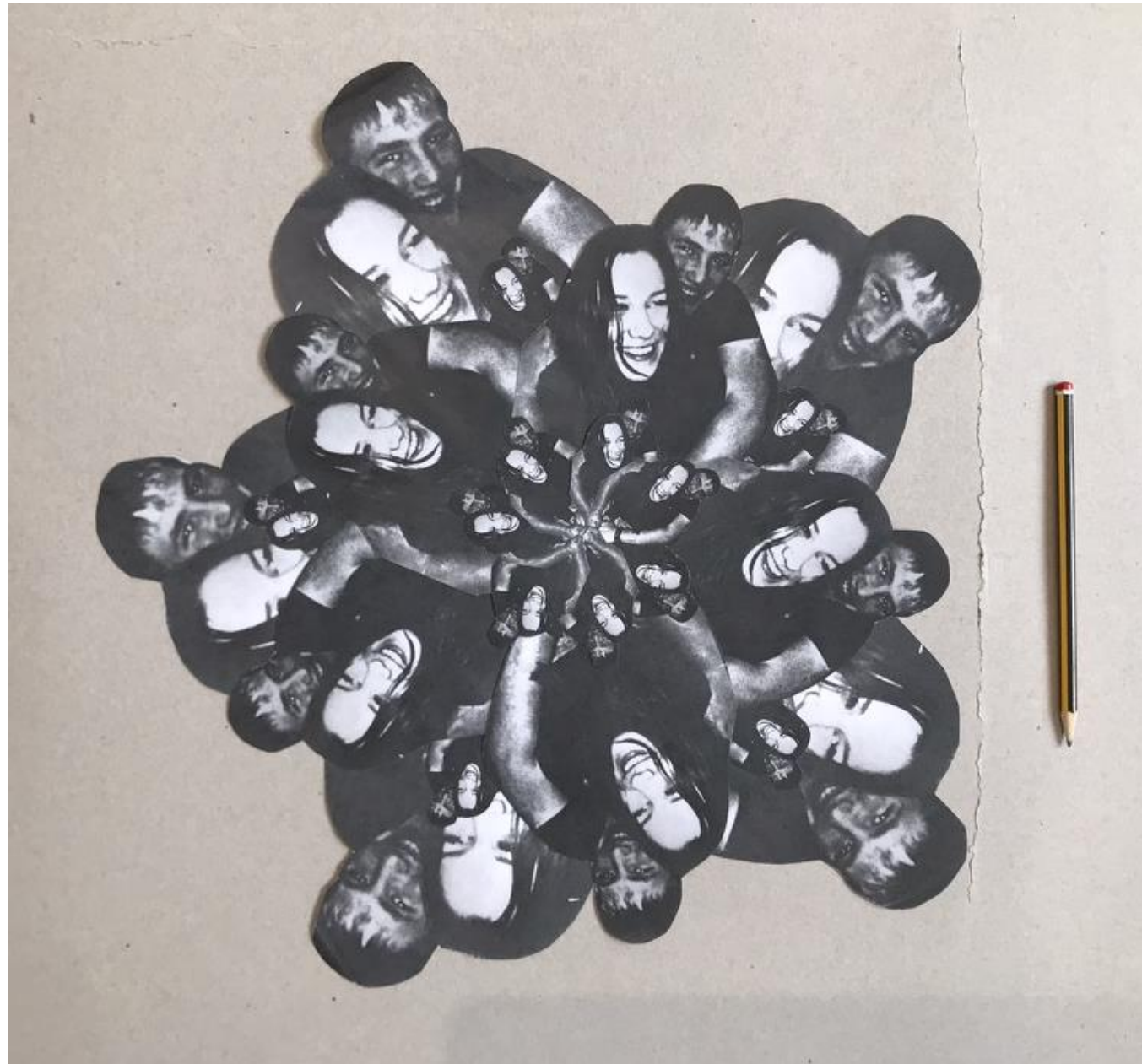








29 marks - FA01 C1



29 marks - FA01 C1