

Component 1 Art, Craft and Design

Standard Mark – 67

Performance Level 6: Exceptional

	AO1	AO2	AO3	AO4
Mark	17	17	17	16
Performance Level	6	6	6	6
	Mostly exceptional ability	Mostly exceptional ability	Mostly exceptional ability	Just exceptional ability

Keywords from the taxonomy:
Accomplished, Inspired, Insightful

Moderator commentary

This Art, Craft and Design Component 1 submission includes a square sketchbook, an A4 sketchbook, several loose A2 sheets of preparatory studies, a three-dimensional MDF shadow box containing several clay objects and a 'melting clock' clay outcome. Images of the work selected here reflect the characteristics of work within Performance Level 6, Exceptional, with a mark of 67/72. The strength of the submission lies within Assessment Objectives 1, 2 and 3.

The overarching theme of 'Death and Decay' enables the candidate to explore a variety of insightful concepts and ideas across two thematic projects, 'Collections' and 'Transformations,' which are interconnected throughout the submission.

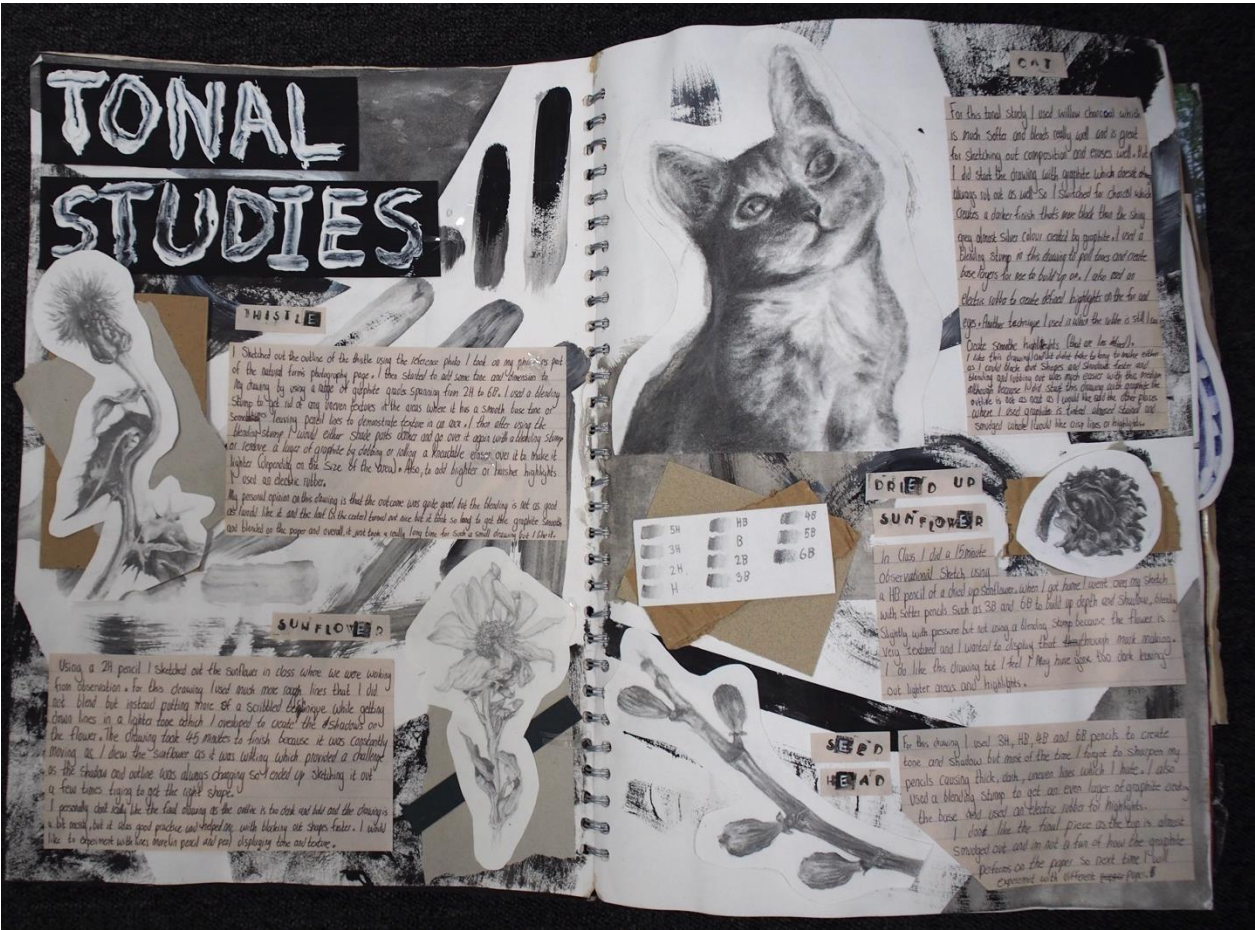
The work of photographers and artists like Karl Blossfeldt and Joseph Cornell serves as the initial inspiration and foundation for the candidate's ideas and creative responses for the first project on 'Collections'. These include a range of techniques and processes within photography, printmaking, painting and drawing. The annotation provides insight into the candidate's reaction to these influences. For example, referring to Cornell's surreal boxed assemblages, the candidate writes: "The small details, such as lighting and paper, add character and evoke a sense of mystery, with dark secrets revealed through the aged look created by dirt and grime accumulated over the years."

The candidate further explores a diverse range of sources in response to the theme, drawing inspiration from stills in Guillermo del Toro's TV series 'Cabinet of Curiosities' and macabre imagery on ancient pottery at the Heraklion Archaeological Museum. These influences inform the planning and creation of an accomplished MDF shadow box (approximately 30 cm in height), resembling a coffin and containing small clay objects crafted in response to the candidate's research.

A mind map detailing the interconnecting theme of 'Transformation' is created, outlining ideas for a photoshoot of objects that change their state or condition, such as skulls, flowers, fruit and a young woman. An investigation into Zdzisław Beksiński's dystopian surrealist horror paintings follows, leading to digital responses using documented Artificial Intelligence. Inspired by these sources, the candidate analyses 'The Persistence of Memory' by Salvador Dalí, Hieronymus Bosch's macabre hell paintings, and Eugenia Loli's surreal collages. Annotations reflect an advanced understanding of creative practice, with concepts and ideas revisited and refined through process and re-evaluation of intent.

The final outcome effectively consolidates the candidate's visual ideas and intentions, taking the shape of a clay clock face with a central painted image. The candidate demonstrates that knowledge, understanding and skills are accomplished throughout this submission.

In order for the submission to move higher within Performance Level 6, the candidate could show greater evidence of outstanding visual language skills in the final outcomes. However, a mark of 67/72 strongly reflects an exceptional level of achievement.





When I used a clear or Cobalt blue. Then before printing I tried and the second time I did a red/brown background and dabbed white onto the stencil and then moving the stencil to the left and dabbed green & onto the stencil.



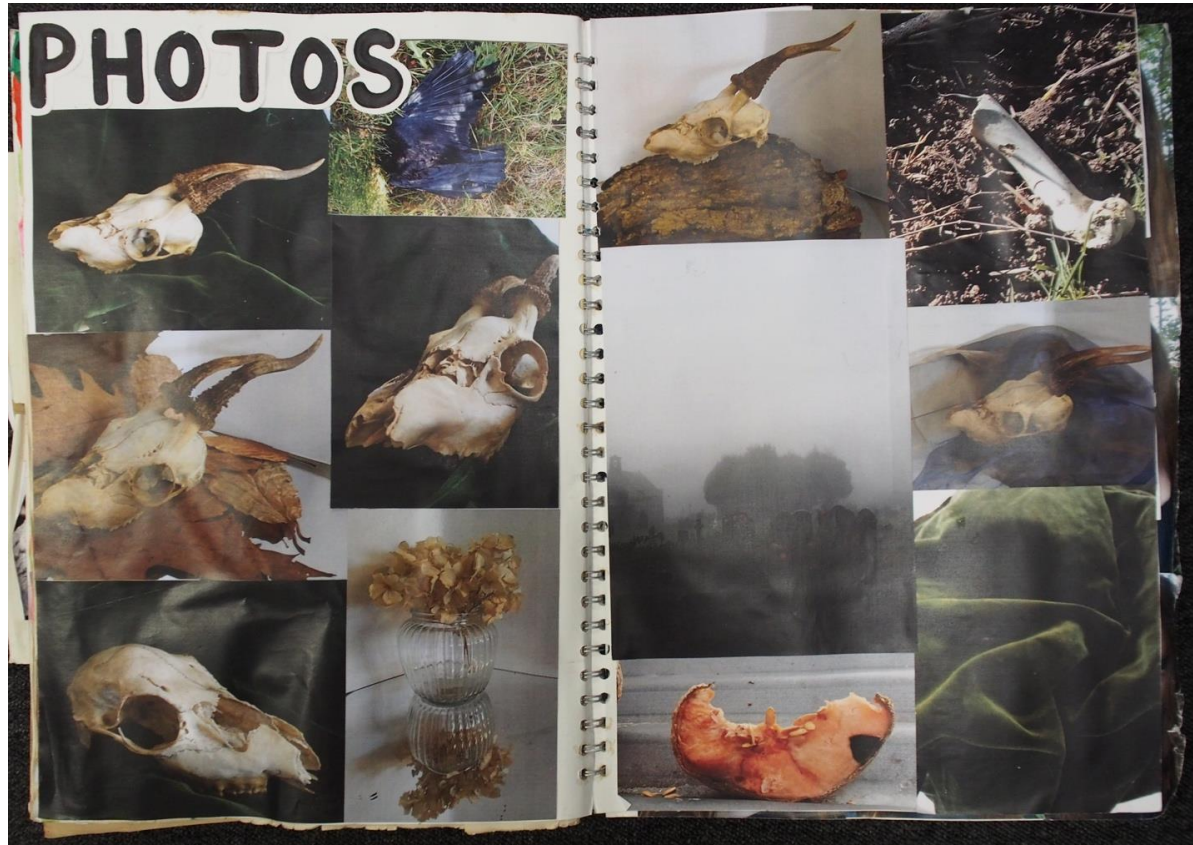
How to gel print

To create a gel print you need a gel printing plate, acrylic paint and a brayer. Other tools to create texture are optional but a great resource is natural materials like bookleaves or rubbish you have lying around.
 For a simple print you take the gel printing plate and squeeze a few peas of acrylic paint on and then with the brayer roll over the acrylic in any direction you wish (the amount of lines you roll over an area the smoother the colors are going to be) you can also add paint as you go as well as take away just how in mind this will have an effect on the final outcome of the gel print. When you are happy with how it looks place a piece of paper over the acrylic and then using a clean brayer roll it over the paper to apply an even amount of pressure on the paper or you can use your hand. Then peel back the paper revealing your gel print.



and then reveal.
 Bubble Wrap - set the gel printing plate up like normal then place the bubble wrap over the acrylic and press with an even pressure, making sure it's flat. Then remove the bubble wrap and place a piece of paper over it and roll over it with a brayer and remove the paper.
 Leaves - when printing leaves place them over the acrylic on the gel plate and put the piece of paper over them. Then roll over with the brayer and while holding down one end of the paper, peel it back and remove the leaves. Next place the paper back down, roll over it again and reveal.
 Dabbing - This technique for applying paint after a textured vein effect from excess paint but you can also blend colors well with this technique.
 Give Spatula - This can scrape away paint and leave a cool textured effect
 Brayer - when applying paint it leaves an even spread of paint and can be effective for blending colours onto a large surface area.





DESIGNS

THE OUTSIDE

Items

- Tv Remote
- Ato Glo
- tools
- Tv
- Christmas tree
- beer
- stuffed duck
- Pixo

THE GRAVEYARD RATS

Measurements for parts

THE AUTOPSY

alien ship

Alien

no eyes are added out because he wants to disable the alien's senses

Carl and Eddie were the ones that got possessed by the alien

Carl

Eddie

Drawing out the measurements for the coffin using MDF for the sides and shells, then using Ply for its base.

I cut out the pieces with the scroll saw and sanded down the sides with a belt sander to smooth out the edges and create the angles on the joints.

I stuck the sides on with wood glue and kept it propped by engineers squares while it dried.

Once the sides had dried, I slotted and glued the shelves in place.

I made the base of the head out of tin foil as this serves two purposes as it means less clay is used making it lighter.

I then covered the foil with clay and first added a wedge at the back of the head so it could stand upright. I then added features to the head including molding a rat out its mouth.

I painted mason's head and the rat with acrylic paint, using it to create shadows and blood splatters across the face.

I covered the rat glue base in clay. Creation the shape of the sword and

when the clay had dried I covered the sword in aluminum foil tape and rolled it with my fingers and a paper towel.

I created a long potato shape out of the tin foil as the base of the rat.

I used clay to block out its features and start adding details from the bottom up. I used a band saw for carving and my finger (worn for its hand).

I primed the rat with gesso as the base color and white and when using the primer as a base I can use the rubbing technique more effectively using acrylic paint.

EXPLORING MEDIUMS



Gouache on white paper

Positives	Negatives
<ul style="list-style-type: none"> thick, opaque application can build up layers quickly smooth texture used in the title on the Lisa Malloy page matte finish 	<ul style="list-style-type: none"> struggle to blend colours in large amounts (big quantity) new medium which I have had very little experience in colour rubs off and transfers easily

with alcohol based markers

Coloured pencil on white paper

Positives	Negatives
<ul style="list-style-type: none"> by using alcohol based markers as a base it ensures no white patches used on my burger painting on the Lisa Malloy page 	<ul style="list-style-type: none"> relatively new medium - meaning I have less experience penils can become more corrosive on markers creating holes struggle to blend colours struggle to get the right colour (too much)

Watercolour on white paper

Positives	Negatives
<ul style="list-style-type: none"> can build up layers can be very effective and detailed when used correctly used on my painting of a Sparrow (Joseph Cornell page) and my test studies (various colours page) 	<ul style="list-style-type: none"> translucent - can see background and any uneven distribution of colour building up layers is a slow process, or can take multiple paper coats and can be expensive when using too much water

Acrylic paint on white paper

Positives	Negatives
<ul style="list-style-type: none"> can build up layers and blend easily can be applied in different ways and can hide mistakes I am used to using it examples include various abstract pieces + prints from the book and my 'Bathroom box' (see my sketchbook page) 	<ul style="list-style-type: none"> can be translucent - showing the white paper paper can get loose and curl when it gets too wet



Acrylic on cardboard

Positive	Negative
<ul style="list-style-type: none"> can build up layers so you can hide mistakes I have experience with acrylic paint no white background (blends nicely with painting and looks good) and even when paint looks translucent it still looks and looks good - texture 	<ul style="list-style-type: none"> blending is a bit harder as moisture from paint is absorbed into the cardboard quickly cardboard can be deformed easily



Gouache on cardboard

Positive	Negative
<ul style="list-style-type: none"> thick, opaque application good at layering smooth no white patchy background (blends well with painting) even looks good 'opaquely' with a high painting textured background 	<ul style="list-style-type: none"> struggle to blend the colours (big quantity) I have very little experience with working with cardboard or gouache colour rubs and transfers easily

Colour pencil on cardboard

Positives	Negatives
<ul style="list-style-type: none"> texture alcohol based markers make a good base 	<ul style="list-style-type: none"> cardboard breaks easily struggle to blend colours have no experience using the two together blend colours messy no detail

Watercolour on cardboard

Positives	Negatives
<ul style="list-style-type: none"> texture can create a ghost like effect 	<ul style="list-style-type: none"> can't make lighter colours without making them look messy struggle to build up layers translucent colours bleed through sides can't cover up mistakes messy + difficult to handle can't have experience with the two together

Gouache on wood

Positives	Negatives
<ul style="list-style-type: none"> opaque thicker application compared to watercolour the way the colours look on the wood wood grain the colour 	<ul style="list-style-type: none"> find it harder to build up layers so it looks a bit 'see through' I haven't had a lot of experience with gouache and I haven't used it on wood before struggle to blend with the medium but find it harder on wood looks messy

Acrylic paint on wood

Positives	Negatives
<ul style="list-style-type: none"> texture of wood and paint can easily build up layers can hide mistakes can blend easily (blends even better when you use brown paint on a white acrylic base) have more experience with this medium than any other on this page easy to handle + nice drying time 	<ul style="list-style-type: none"> when paint gets into the grain of the wood it can be difficult to clean can't cover up mistakes can't have experience with this medium than any other on this page

Colour pencil on wood

Positives	Negatives
<ul style="list-style-type: none"> wood texture alcohol based markers provide a good base 	<ul style="list-style-type: none"> blend can't have much experience with colour pencils and their ability to blend the colour pencil and acrylic together struggle to layer and blend colours struggle to add details slow process + can't hide details

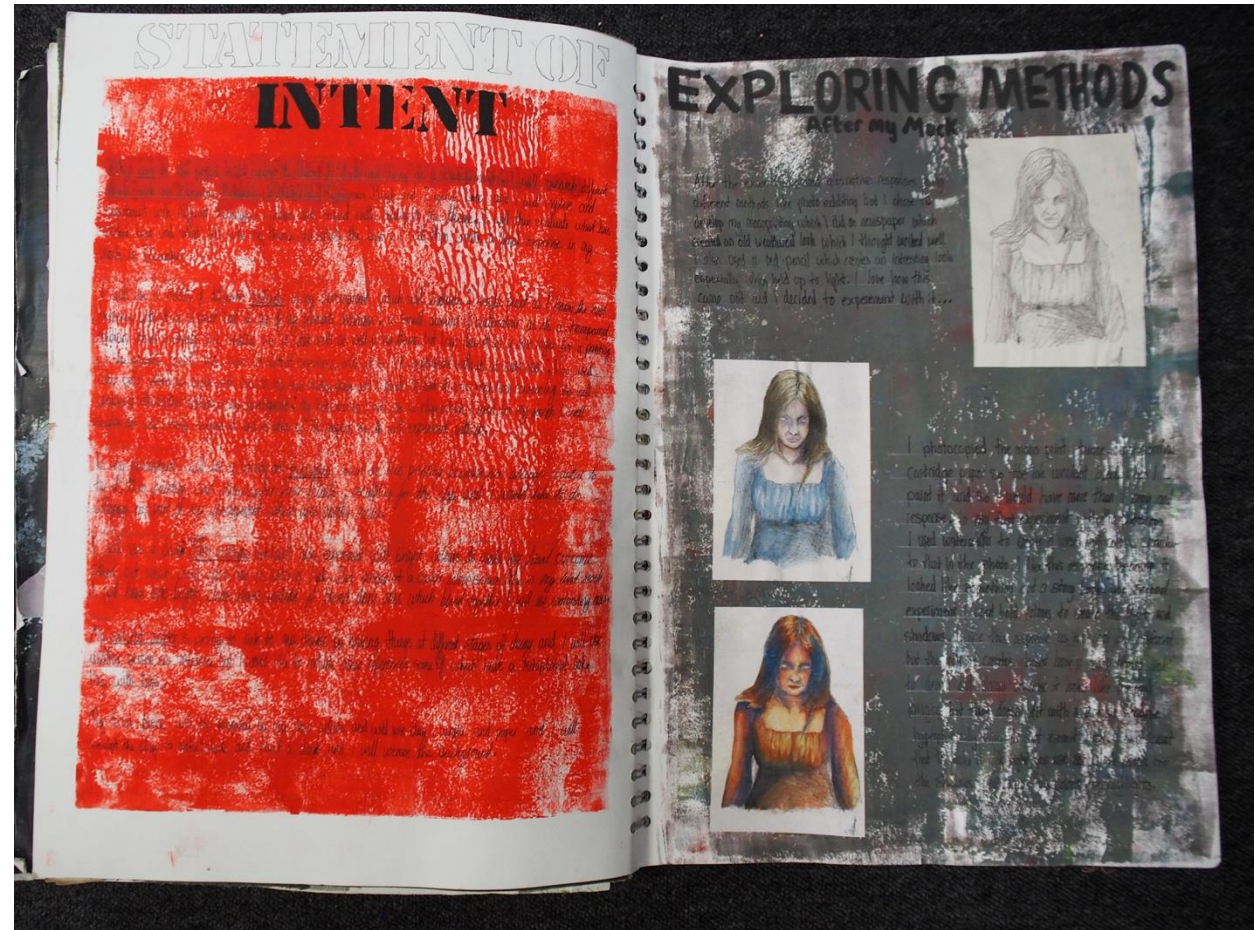
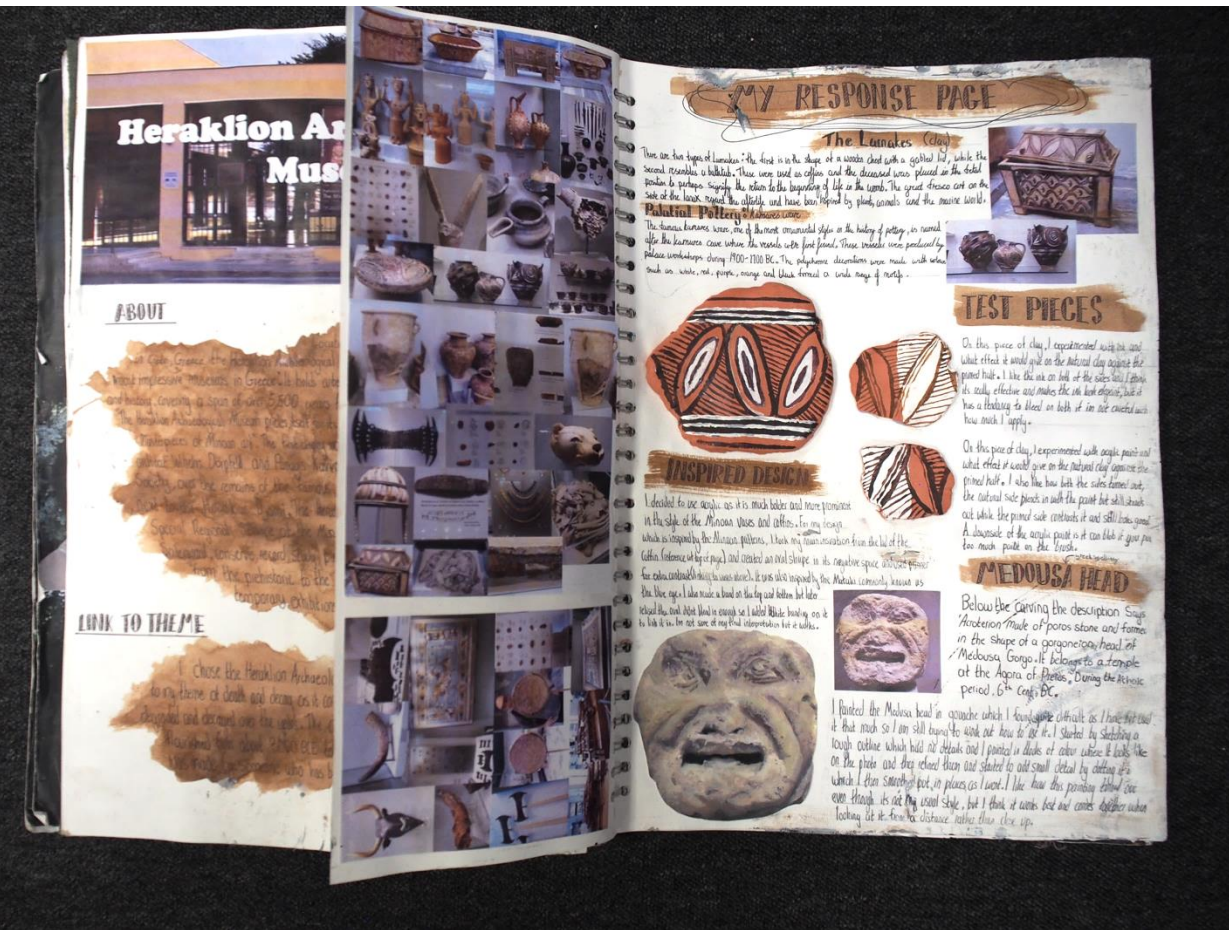
Watercolour on wood

Positives	Negatives
<ul style="list-style-type: none"> can see texture easy to blend + absorb in the wood like paper able to get lighter colours the colour 	<ul style="list-style-type: none"> bleeds + expands can't really get much detail messy + blurred doesn't look great I don't have any experience with using the 'water' together can't hide mistakes

Conclusion

I narrowed it down between gouache or acrylic on cardboard or acrylic on wood, but decided not to do watercolour on wood as I don't think it would be bold enough and I will not do colour pencil as I am sure of the medium and it takes quite a long time to make it look good. My final conclusion is that acrylic on wood is the best decision as the wood grain is less likely to get damaged (compared to cardboard) and is easy to layer and blend on. I chose acrylic paint as it's easy to use, has a nice finish, layer well and I have the most experience with it whereas I have barely used gouache and am still trying to work out the best way to use it. Note: I had to prime and sand the wood before I use it for my work for a smooth finish and I will use the same process on a white substrate making it easy to clean.







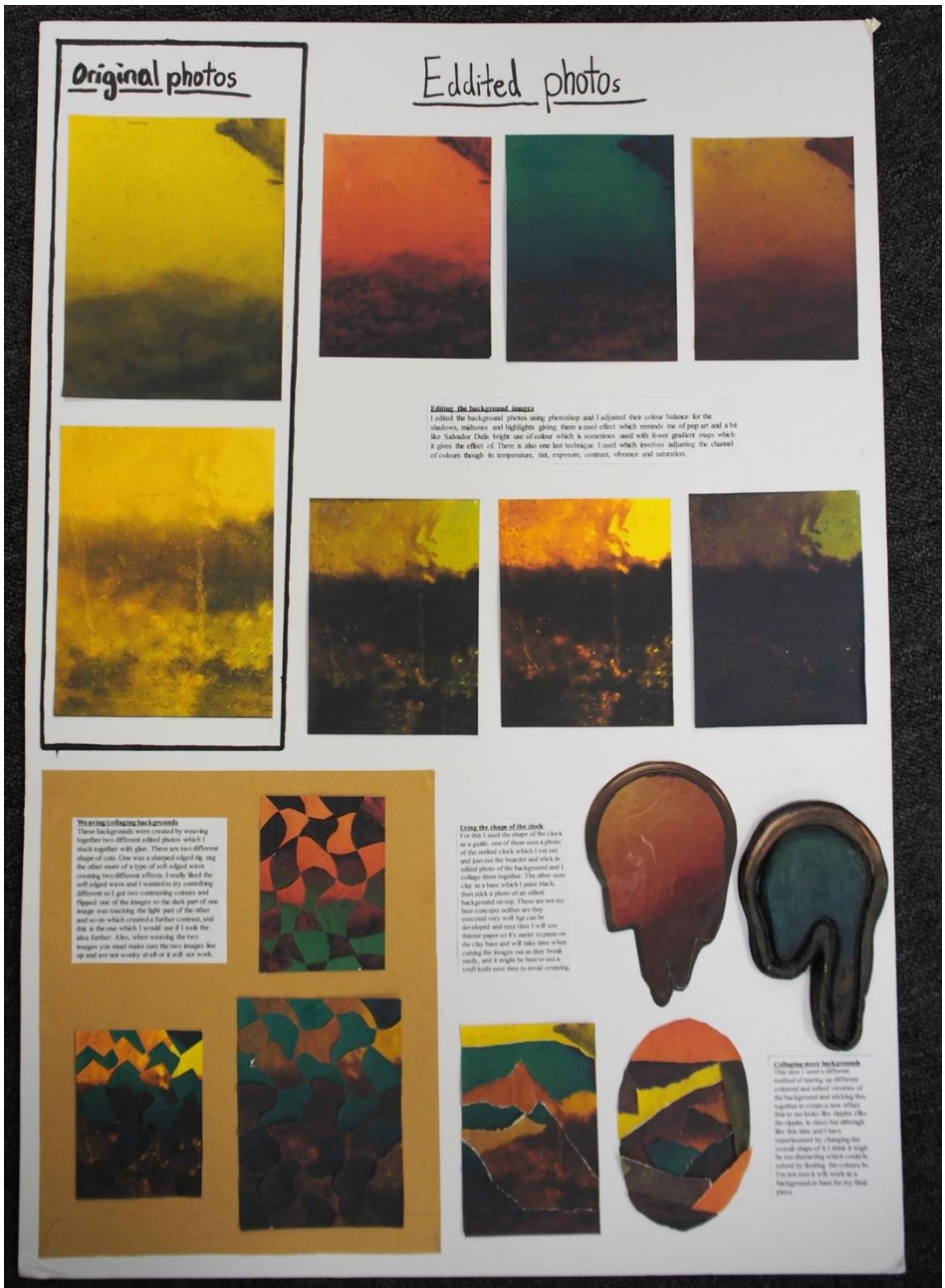
Check references

The clocks are not from my original photoshoot as they are something I thought of later on, but I think it is a great link to my theme as well as one of my artists, Salvador Dalí who was famous for his melting clocks. I took some photos of clocks against a clean white background, and I edited them in photoshop by liquifying the image and dragging the distorted features down till it look how I wanted. This then provided me the references for this board.

Painting of melting clock
This painting started out with a airbrush on the base layer using mainly red, but it also meant that the background wasn't plain and Dalí's over saturated the piece. I then used pencil on the main mechanism for the clock to add overall colour and then I used coloured pencil to add in the smaller details which included the melting numbers and hands. I love this overall combination of mediums, and I think it's very effective, but I would also recommend keeping the coloured pencil sharp as when they are flat, they are harder to use and are not as good when adding small accurate details. I also like the fact the shape is different from the rest of the clocks but an unsure how to incorporate it into a design.

Clear clock
The clock is made from an dry clay which I pressed to prevent cracking and to hold a white (plastic) base for you to build off. I then painted on the numbers and hands and added the detailing around it whilst the only problem with painting it is it cracks it over to 60 off layers of paint so if I take this design further, I need to keep this in mind. The clay is also delicate and is easily broken so this also needs to be thought about if I take the design further, but I do like this concept.

Layered prints
There are 6 prints were made from a 1.5m print I made which I then printed on different types of paper to get varying textures and I made each white ink and red ink. One use of the prints, I also used an exposure by drawing a rough outline of the print which I used like. For this time I would like to experiment with a large print on top of drawing it I think this idea further.



Original photos

Edited photos

Editing the background images

I edited the background photos using photoshop and I adjusted their colour balance for the shadows, midtones and highlights giving them a cool effect which reminds me of pop art and a bit like Salvador Dalí bright use of colour which is sometimes used with lower gradient tones which gives the effect of. There is also one last technique I used which involves adjusting the channel of colour though its temperature, sat, exposure, contrast, vibrance and saturation.

Creating collaging backgrounds
These backgrounds were created by weaving together two different edited photos, which I stuck together with a glue. There are two different shape of cuts. One was a sharp edged zig zag the other more of a type of well edged wave creating two different effects. I really liked the well edged wave and I wanted to try something different so I got two contrasting colours and I flipped one of the images so the left part of one image was touching the right part of the other and so on which created a further contrast, and this is the one which I would use if I took the idea further. Also, when weaving the two images you must make sure the two images line up and are not wavy at all or it will not work.

Using the shape of the clock
For this I used the shape of the clock as a guide, one of them was a photo of the melting clock which I cut out and put on the boarder and stick in edited photos of the background and I collage them together. The other was the shape of a face which I gave black, then stick a photo of an animal background over it. There are not my best concepts either as they were made very well but can be developed and next time I will use thinner paper as it's easier to print on and the clock faces will take time when cutting the images out as they break easily, and it might be best to use a craft knife next time to avoid cutting.

Collaging more backgrounds
This one I used a different method of weaving up different coloured and edited versions of the background and sticking them together to create a new effect, due to the lack of a paper (the one appears to have been although the ink this and I have experimented by changing the overall shape of it I think it might be the interesting which could be solved by making the colours be. It's less sure to work the background to have the red piece.

DEVELOPMENT

Fourth thumbnail sketch

By adding the cultural background of a clock, even links to my theme and my interests. But also what impacts how I will make it so here I will just cut the changes.

Link to theme: The picture photos used in the collage were created as a result of the developing of my final theme that were from 'Unemployment'.

Artist Links: It links to Salvador Dalí through the surrealist / dreamlike look of his work. It also links to the background of the picture of the clock because of the background. Dalí was inspired by his own dream world and his use of color. It also links to Dalí because of his complex, often 'surreal' style. The clock design seen in his work makes sense in my work as it is a clock.

How I will make it: I will use printed images of the two faces photos for joining which I will then glue on. I want to use a clay clock as my main piece. I will make it so that it is made to look like a clock.

My fourth thumbnail sketch is a collage and a clock. I will make it from my board.

PREP JUST BEFORE THE MOCK

Face references

Use making from looking at my face and making a clay clock. Use the photos for the face of the clock.

birds eye
left side of my face
inspiration from photos of face
Use the photos for reference when making

she puts as practice for the mock

Clock Reference

Use as main reference when painting the details on the face so its more proportional.

Can refer when making and painting clock to learn from mistakes.

better than using my clay clock because there are inaccuracies that could make a reference and could be enhance in my mock.

acts as practice / prep for mock when I paint a make the clock.

make the border thicker so its less likely to break.

Background Reference

Use two photos as the background.

Use the photos as the background.

Use the photos as the background.

Making and painting the clock as prep

1. made the clay clock the night before the exam which caused some problems.
2. I realised I had not got enough clay when I started making it so I had to go to get more more.
3. I had to use a 1/2 hour to make the face of the clock and I had to use a 1/2 hour to make the face of the clock.
4. because I made it the night before it wasn't as complex as I thought so I put it by the radiator to speed the process up to dry and to prevent cracking. I painted it with the colors I had in the photos from the photos I had made and I had to use a 1/2 hour to make the face of the clock.
5. I only had one photo of the clock so I had to use the reference and I had to use a 1/2 hour to make the face of the clock.
6. After the mock when it had completely dried it started to crack and I had to use a 1/2 hour to make the face of the clock.

Needs to do before

- Ask teacher if she needs all the development boards and look or if I can just give the photos as proof
- Text Lou
- Set table up with materials and brushes + get water pot
- Print this slide (but check it fits on page first and its colour and on follow)
- Convert the two photos into a3 (but if it doesn't work it doesn't matter or print 2 into an equivalent to one a3)
- Ask teacher about the clock and if it's okay to be prep prep
- Don't stress

Need to do during

- Printed picture the face for the clock in the photos and I had to use a 1/2 hour to make the face of the clock.
- Paint clock + me (4 hours) and remember shadows but don't do shadows
- Do weaving and stick to board (red-orange/blue-turquoise)
- Then cut out board within the 1 hour
- Take photos at each stage but ask first (during break and lunch then after)

Do after

- Hand in development and folder (made 11/12/2023)

YEAR 11 MOCK EXAM

PLANNING A FINAL PIECE

First thumbnail sketch

Link to theme: The figure is made up of parts which are in different stages of decay. Part of it is from skeletons which are the reason of its death. The other parts are from the face of the clock which are the reason of its death. The figure is made up of parts which are in different stages of decay. Part of it is from skeletons which are the reason of its death. The other parts are from the face of the clock which are the reason of its death.

Artist Links: It links to Salvador Dalí through the surrealist / dreamlike look of his work. It also links to the background of the picture of the clock because of the background. Dalí was inspired by his own dream world and his use of color. It also links to Dalí because of his complex, often 'surreal' style. The clock design seen in his work makes sense in my work as it is a clock.

How I will make it: I will use printed images of the two faces photos for joining which I will then glue on. I want to use a clay clock as my main piece. I will make it so that it is made to look like a clock.

Second thumbnail sketch

Link to theme: The background is a collage of the clock face and the face of the clock. The figure is made up of parts which are in different stages of decay. Part of it is from skeletons which are the reason of its death. The other parts are from the face of the clock which are the reason of its death.

Artist Links: It links to Salvador Dalí through the surrealist / dreamlike look of his work. It also links to the background of the picture of the clock because of the background. Dalí was inspired by his own dream world and his use of color. It also links to Dalí because of his complex, often 'surreal' style. The clock design seen in his work makes sense in my work as it is a clock.

How I will make it: I will use printed images of the two faces photos for joining which I will then glue on. I want to use a clay clock as my main piece. I will make it so that it is made to look like a clock.

Third thumbnail sketch

Link to theme: The figure is made up of parts which are in different stages of decay. Part of it is from skeletons which are the reason of its death. The other parts are from the face of the clock which are the reason of its death.

Artist Links: It links to Salvador Dalí through the surrealist / dreamlike look of his work. It also links to the background of the picture of the clock because of the background. Dalí was inspired by his own dream world and his use of color. It also links to Dalí because of his complex, often 'surreal' style. The clock design seen in his work makes sense in my work as it is a clock.

How I will make it: I will use printed images of the two faces photos for joining which I will then glue on. I want to use a clay clock as my main piece. I will make it so that it is made to look like a clock.

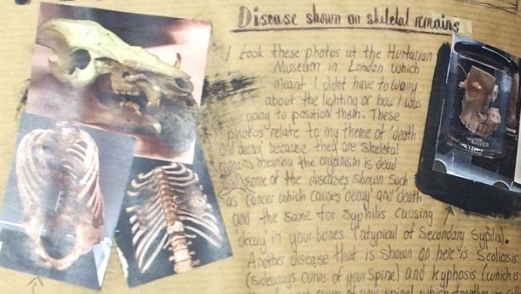
Fourth thumbnail sketch

Link to theme: The figure is made up of parts which are in different stages of decay. Part of it is from skeletons which are the reason of its death. The other parts are from the face of the clock which are the reason of its death.

Artist Links: It links to Salvador Dalí through the surrealist / dreamlike look of his work. It also links to the background of the picture of the clock because of the background. Dalí was inspired by his own dream world and his use of color. It also links to Dalí because of his complex, often 'surreal' style. The clock design seen in his work makes sense in my work as it is a clock.

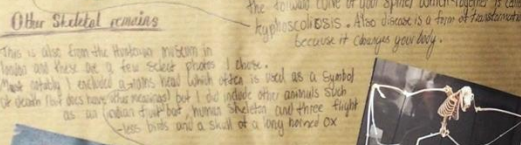
How I will make it: I will use printed images of the two faces photos for joining which I will then glue on. I want to use a clay clock as my main piece. I will make it so that it is made to look like a clock.

ORIGINAL PHOTOS - for development and reference



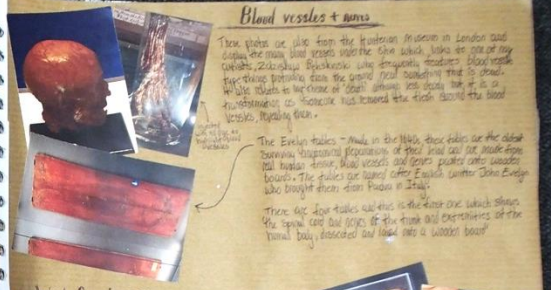
Disease shown on skeletal remains

I took these photos at the Huxleyan Museum in London which meant I didn't have to worry about the lighting or how I was going to position them. These photos relate to my theme of death and decay because they are skeletal remains. The photos I took were of the disease shown such as Cancer which causes decay and death. And the same for Syphilis causing decay in your bones (typical of Secondary Syphilis). Another disease that is shown on here is Scoliosis (sideways curve of your spine) and Kyphosis (which is the forward curve of your spine which together is called kyphoscoliosis - Also disease is a form of transformation because it changes you fully).



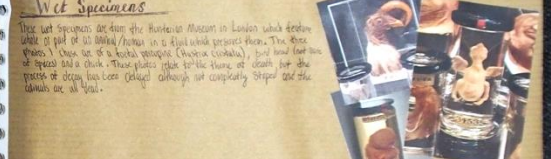
Other Skeletal remains

This is also from the Huxleyan Museum in London and these are a few more photos I took. These photos I took are of a human skull which was used as a symbol of death but does have the meaning but I did include other animals such as a rabbit skull, human skeleton and three flightless birds and a skull of a long horned ox. I was when it is an animal (a type of mammalian species). This animal looks so alive though because they are dead and their flesh has decayed leaving behind a skull of a mammal.



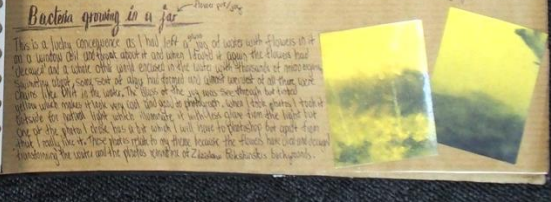
Blood vessels + more

These photos are also from the Huxleyan Museum in London and these are the main blood vessels in the eye which have an eye of my anatomy. The photos are taken from the eye which has been cut open. The photos are taken from the eye which has been cut open. The photos are taken from the eye which has been cut open.



Wet Specimens

These wet specimens are from the Huxleyan Museum in London which were used as part of an anatomy lesson in a class which prepared them. The photos I took are of a wet specimen (human skeleton) but had lost the head and I took these photos to be able to see the details of the bones. The photos are taken from the wet specimen which has been cut open and the pieces are all laid out.



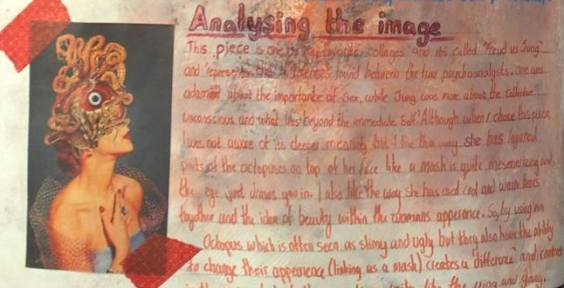
Living organism in a jar

This is a living organism as I had left a jar of water with flowers in it and it was the first time I saw a living organism in a jar. The photos I took are of a living organism in a jar. The photos are taken from the living organism in a jar.

EUGENIA LOLI

Artist info

Eugenia Loli was born in Greece in 1978, and also grew up there, she also lived in the UK. Eugenia now lives in California. Eugenia is best known for her Vintage Surrealist Collages but also does illustrations. She started out as nurse but has also been a computer programmer, a technology journalist and filmmaker, going on to create an animated music video giving her the knowledge of collage. Speaking a new start to her career. She has now become a full time collage artist and has had magazines such as Teen, Glamour and Cosmopolitan asking for commissions. Eugenia uses images from her collection of vintage magazines and pairs them with Sci-fi book cut outs to create a supernatural world with aspects of Surrealism, drama, pop art and meta. Eugenia's main inspiration comes from Kieron Joppert and Collage starts with her finding a base for her background and then from this foundation she layers patterns, textures and objects on top, laying a pathway for multiple interpretations. She finds her work a source of escapism and uses photoshop.



Analysing the image

This piece is one of the vintage collages and its called 'Head as King' and represents the power of the mind between the two pages. The collage is about the importance of one, while King was more about the culture. The collage is about the importance of one, while King was more about the culture. The collage is about the importance of one, while King was more about the culture.



Diving into the universe

This piece is a collage of a man's face and a book cover. The collage is about the importance of one, while King was more about the culture. The collage is about the importance of one, while King was more about the culture.





67 marks - 1AD0 C1

This board links to my artist Eugenia Loh through the use of Collage and Hieronymus Bosch because they are hybrids but also follow a dark colour scheme. It also links to Salvador Dali through distortion and the clock, links Zdzislaw Beksinski with the Background and flesh details (the strands of flesh like his veins)

I decided to experiment with a watercolour wash to generate ideas on how to position each element from several photos into a collage. When I liked the layout, and I thought that each blended together nicely, I used a darker watercolour and finalized a few details using pen and I learnt this is a really easy way to generate ideas for collaging without spending lots of time trying to come up with an idea. Then I refined the design by using acrylic paints on a different piece of paper and redrew it in a more proportionally accurate way and added finer details and colour using my references as a guide from my photoshop page but also using artistic license to make creative decisions that looked better to me like the strands of flesh and stretched skin.

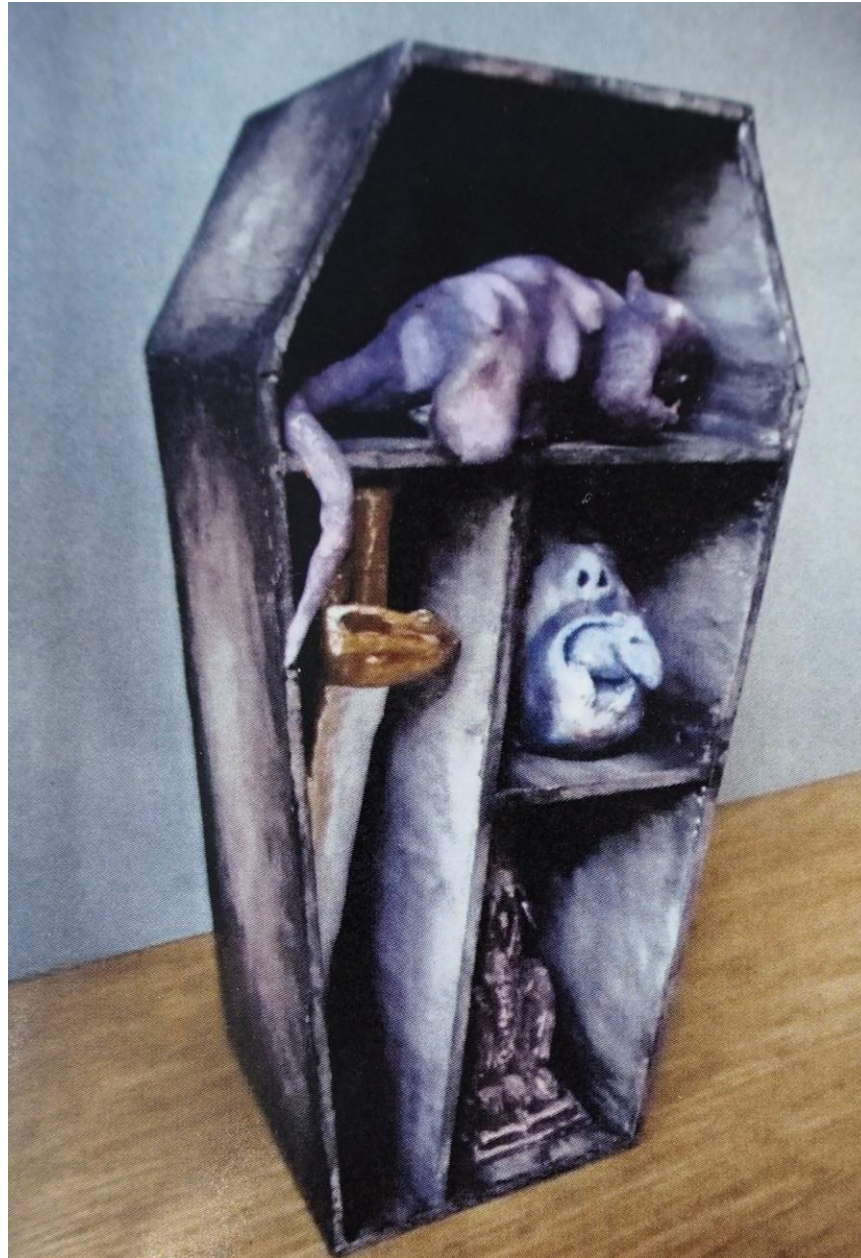
I experimented with photoshopping my images to make a collage that shows death and decay. I cut out each individual feature I liked from my photos and layered them together and then blurred areas that were too sharp and created shadowing in areas like the skull to make it look more realistic. I learnt that this process is very time consuming to make sure everything is cut right and blends together as a coherent piece. I then experimented with different filters to change the colour and to cause distortion linking to time and how it passes (like a blur). I liked the effects, but I wasn't sure if this would work in my development of my final piece.

I used my edited photo which has no colour change as the reference as I think it represents decay in a more clear way. I started this painting as a drawing using just coloured pencils, but because the paper is so big I was taking forever to get the right colour and amount of detail (what is the excess pencil dust gets in the way causing colours to clash when drawing creating a horrible effect). I learnt from this that it would be more time effective just to use acrylic paint, but I left the hair and skull but redid everything else. I like how the finished painting came out and next time I will not attempt to do a big drawing with just coloured pencils as it takes too long. I also would redo the face because it's still a bit too dark and lacks dimension.

18



67 marks - 1AD0 C1



67 marks - 1AD0 C1