

Write your name here

Surname

Other names

Pearson
Edexcel Award

Centre Number

--	--	--	--	--

Candidate Number

--	--	--	--

Number and Measure

Level 1

Section A (Calculator)

Thursday 4 May 2017 – Morning

Time: 1 hour

Paper Reference

ANM10/1A

You must have: Ruler graduated in centimetres and millimetres, protractor, pen, HB pencil, eraser, calculator.

Total Marks

Instructions

- Use **black** ink or ball-point pen.
- **Fill in the boxes** at the top of this page with your name, centre number and candidate number.
- Answer **all** questions.
- Answer the questions in the spaces provided – *there may be more space than you need.*
- **Calculators may be used.**
- If your calculator does not have a π button, take the value of π to be 3.142 unless the question instructs otherwise.



Information

- The total mark for this section is 50
- The marks for **each** question are shown in brackets – *use this as a guide as to how much time to spend on each question.*

Advice

- Read each question carefully before you start to answer it.
- Keep an eye on the time.
- Try to answer every question.
- Check your answers if you have time at the end.

Turn over ►

P48376A

©2017 Pearson Education Ltd.

6/6/6/




Pearson

Section A

Answer ALL questions.

Write your answers in the spaces provided.

You must write down all the stages in your working.

1 Here is a list of numbers.

5 9 10 13 18 27 32

From the list

(a) write down a factor of 30

.....
(1)

(b) write down a multiple of 6

.....
(1)

(c) write down a prime number

.....
(1)

(d) write down two numbers with a sum of 22

.....
(1)

(Total for Question 1 is 4 marks)

DO NOT WRITE IN THIS AREA

DO NOT WRITE IN THIS AREA

DO NOT WRITE IN THIS AREA



2 (a) Use your calculator to work out $83.2 - 7.54 + 7.3$

.....
(1)

(b) Use your calculator to work out $5.46 \div 0.35$

.....
(1)

(c) Use your calculator to work out 9.53×1.3

.....
(1)

(d) Round 14.27 to the nearest whole number.

.....
(1)

(e) Write the number 428 in words.

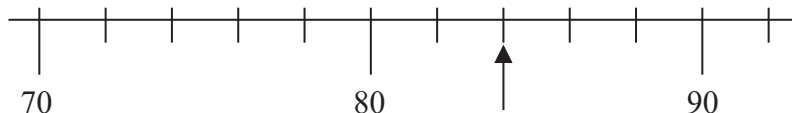
.....
(1)

(f) Write 40% as a decimal.

.....
(1)

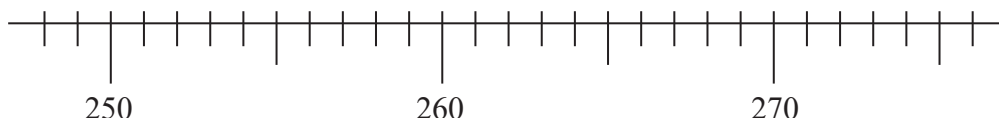
(Total for Question 2 is 6 marks)

3



(a) Write down the number shown by the arrow.

.....
(1)



(b) On the scale, mark with an arrow (↑) the number 267

.....
(1)

(Total for Question 3 is 2 marks)



4 Here is part of a calendar for August 2016

August 2016						
Sun	Mon	Tues	Weds	Thurs	Fri	Sat
	1	2	3	4	5	6
7	8	9	10	11	12	13

(a) What day of the week was the 29th August 2016?

.....
(1)

(b) What was the date two weeks before the 7th August 2016?

.....
(2)

(Total for Question 4 is 3 marks)

5 Ali invests £850 at 4% interest for one year.

How much interest does he get for one year?

£.....

(Total for Question 5 is 2 marks)



DO NOT WRITE IN THIS AREA

DO NOT WRITE IN THIS AREA

DO NOT WRITE IN THIS AREA

6 Emma buys

- 2 pens at 59p each
- 3 pencils at 27p each
- 1 book for £3.95

She pays with a £10 note.

How much change should Emma get?

£.....

(Total for Question 6 is 4 marks)

7 Here is part of a number line.



(a) Write these numbers in order of size.
Start with the smallest number.

- 3 3 0 -4 2 -1

.....
(1)

(b) Work out $-3 + 7$

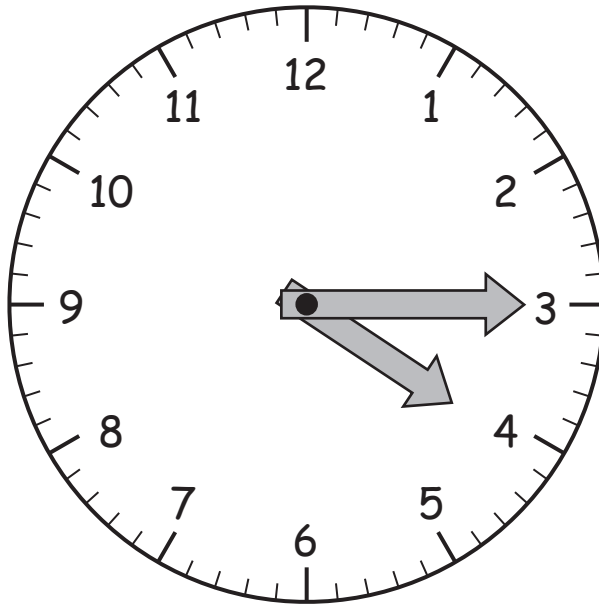
.....
(1)

(c) Work out $2 - 5$

.....
(1)

(Total for Question 7 is 3 marks)





It is afternoon.

(a) Write down the time shown on this clock.

..... (2)

(b) Write 205 minutes in hours and minutes.

..... hours minutes (2)

(Total for Question 8 is 4 marks)

DO NOT WRITE IN THIS AREA

DO NOT WRITE IN THIS AREA

DO NOT WRITE IN THIS AREA

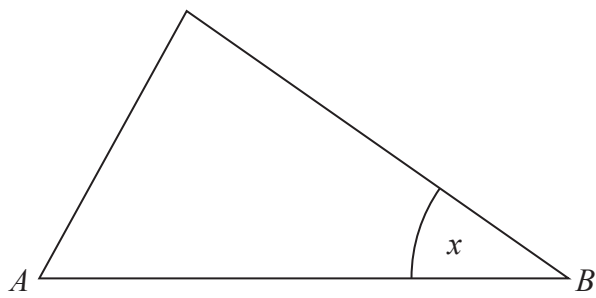


DO NOT WRITE IN THIS AREA

DO NOT WRITE IN THIS AREA

DO NOT WRITE IN THIS AREA

9 Here is a triangle.



(a) Measure, in cm, the length of the side AB .

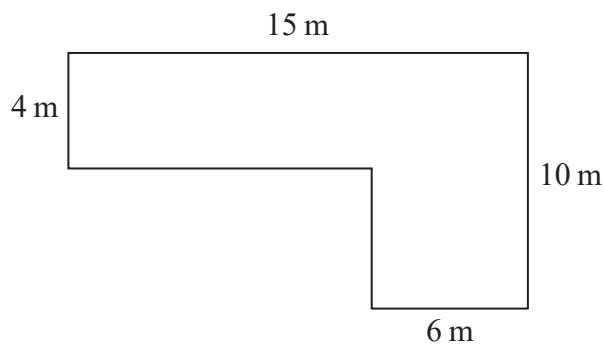
..... cm
(1)

(b) Measure the size of the angle marked x .

.....^o
(1)

(Total for Question 9 is 2 marks)

10 The diagram shows a garden made from rectangles.



Work out the area of the garden.

..... m²

(Total for Question 10 is 3 marks)



11 Here is some information about the six players in a table football competition.

Player	Age	Number of games won	Goals scored	Goals let in
Alice	18	2	28	36
Barney	17	2	44	39
Craig	19	2	31	43
Danny	15	1	33	42
Elaine	16	5	50	23
Fred	17	3	33	36

(a) Which two players are the same age?

.....
(1)

(b) Which player scored the least number of goals?

.....
(1)

(c) Which player let in the greatest number of goals?

.....
(1)

(Total for Question 11 is 3 marks)



DO NOT WRITE IN THIS AREA

DO NOT WRITE IN THIS AREA

DO NOT WRITE IN THIS AREA

12 (a) Work out $3 \text{ km } 450 \text{ m} + 2 \text{ km } 650 \text{ m} - 1 \text{ km } 700 \text{ m}$

.....

(2)

(b) Change 2.3 litres into millilitres.

..... millilitres

(1)

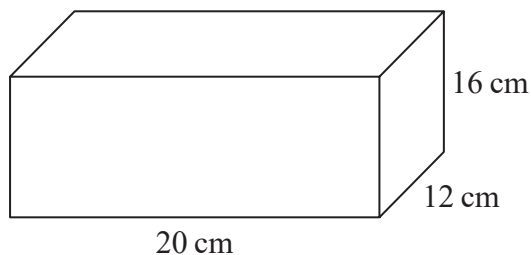
(c) Change 540 mm into cm.

..... cm

(1)

(Total for Question 12 is 4 marks)

13 Work out the volume of this cuboid.

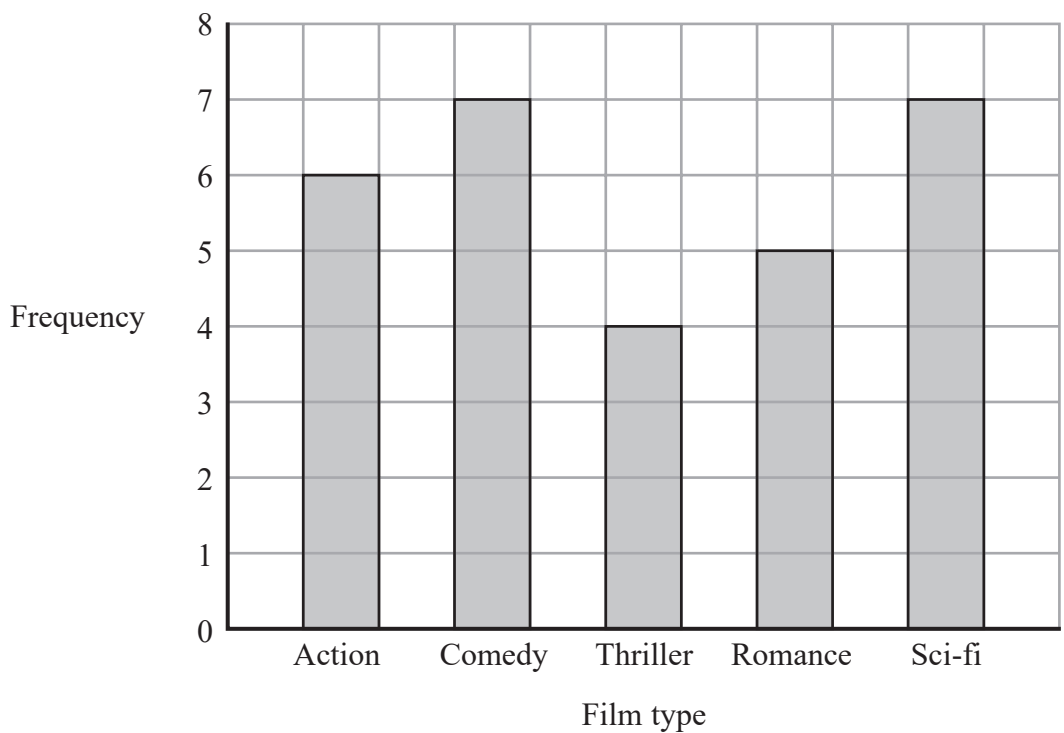


..... cm^3

(Total for Question 13 is 2 marks)



14 The bar chart shows information about the favourite film type of each student in class 11P.



(a) How many students said Romance was their favourite?

.....
(1)

(b) Which two film types have the same frequency?

..... and

(1)

(c) How many students are in class 11P?

.....
(2)

(Total for Question 14 is 4 marks)



15 Here is information from Tilly's gas bill.

Gas R us	
Gas Bill March 2016	
Cost per unit 22p	
Monthly charge £11.40	
Reading 31st March	4671
Reading 1st March	4512
Units used units

Work out the total of Tilly's gas bill.

.....
(Total for Question 15 is 4 marks)

TOTAL FOR SECTION A IS 50 MARKS

DO NOT WRITE IN THIS AREA



DO NOT WRITE IN THIS AREA

DO NOT WRITE IN THIS AREA

DO NOT WRITE IN THIS AREA

BLANK PAGE

