

Write your name here

Surname

Other names

Pearson
Edexcel Award

Centre Number

--	--	--	--	--

Candidate Number

--	--	--	--

Number and Measure

Level 1

Section A (Calculator)

Tuesday 13 January 2015 – Morning

Time: 1 hour

Paper Reference

ANM10/1A

You must have: Ruler graduated in centimetres and millimetres, protractor, pen, HB pencil, eraser, calculator.

Total Marks



Instructions

- Use **black** ink or ball-point pen.
- **Fill in the boxes** at the top of this page with your name, centre number and candidate number.
- Answer **all** questions.
- Answer the questions in the spaces provided – *there may be more space than you need.*
- **Calculators may be used.**
- If your calculator does not have a π button, take the value of π to be 3.142 unless the question instructs otherwise.

Information

- The total mark for this section is 50
- The marks for **each** question are shown in brackets – *use this as a guide as to how much time to spend on each question.*

Advice

- Read each question carefully before you start to answer it.
- Keep an eye on the time.
- Try to answer every question.
- Check your answers if you have time at the end.

Turn over ►

P45879A

©2015 Pearson Education Ltd.

7/6/7/



PEARSON

Section A

Answer ALL questions.

Write your answers in the spaces provided.

You must write down all stages in your working.

1 Use your calculator to work out

(a) $75.4 - 9.63 + 22.1$

.....
(1)

(b) 5.75×6.3

.....
(1)

(c) $5.67 \div 0.35$

.....
(1)

(d) Write 34.86 correct to the nearest whole number.

.....
(1)

(Total for Question 1 is 4 marks)



2 Here are two scales.



(a) Write down the number shown by the arrow.

.....
(1)



(b) Write down the number shown by the arrow.

.....
(1)

(Total for Question 2 is 2 marks)

3 Annie buys

- 3 packets of sweets at 99p each
- 5 lollipops at 18p each
- 1 pack of cola at £2.95

She pays with a £10 note.

How much change should Annie get?

£.....

(Total for Question 3 is 4 marks)



4 Here is part of a timetable for trains from Crewe to Holyhead.

Crewe	0623	0849	0949	0949	1049	1149
Chester	0643	0912	1012	1012	1112	1212
Prestatyn	0710	–	1041	–	–	–
Rhyl	0716	–	1047	–	1142	–
Colwyn Bay	0726	–	1058	–	1153	–
Bangor	0749	–	1127	–	1216	–
Holyhead	0823	1040	1224	1209	1250	1413

(a) At what time should the 0849 train from Crewe get to Holyhead?

.....
(1)

Rhiannon gets to Crewe at 0840
She is going to catch the next train to Rhyl.

(b) How long does she wait?

.....
(1)

Ben takes the 0949 train from Crewe to Holyhead that stops at Rhyl.
David takes the 0949 train from Crewe to Holyhead that does **not** stop at Rhyl.

It takes Ben longer than David to get to Holyhead.

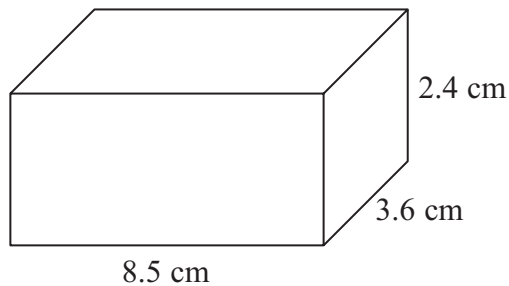
(c) How much longer?

..... minutes
(2)

(Total for Question 4 is 4 marks)



5 Here is a cuboid.



Work out the volume of the cuboid.

.....

(Total for Question 5 is 3 marks)

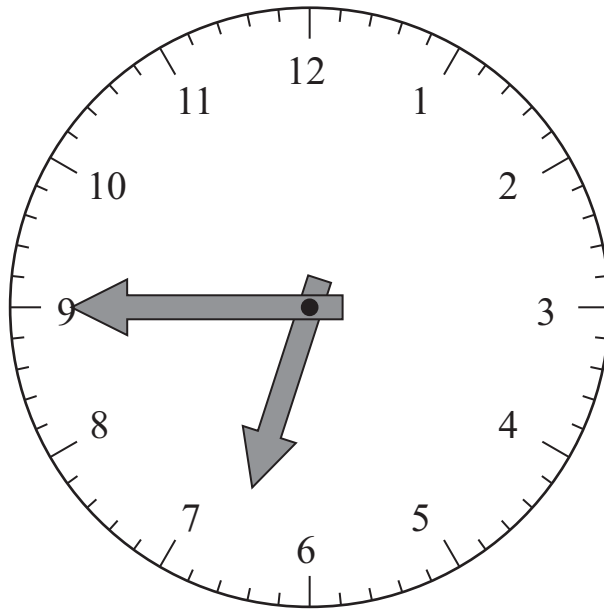
6 Jason invests £250 at 3% interest for one year.

How much interest does he get at the end of the year?

£.....

(Total for Question 6 is 2 marks)





It is evening.

(a) Write down the time shown on this clock.

.....
(2)

(b) Write 250 seconds in minutes and seconds.

..... minutes seconds
(2)

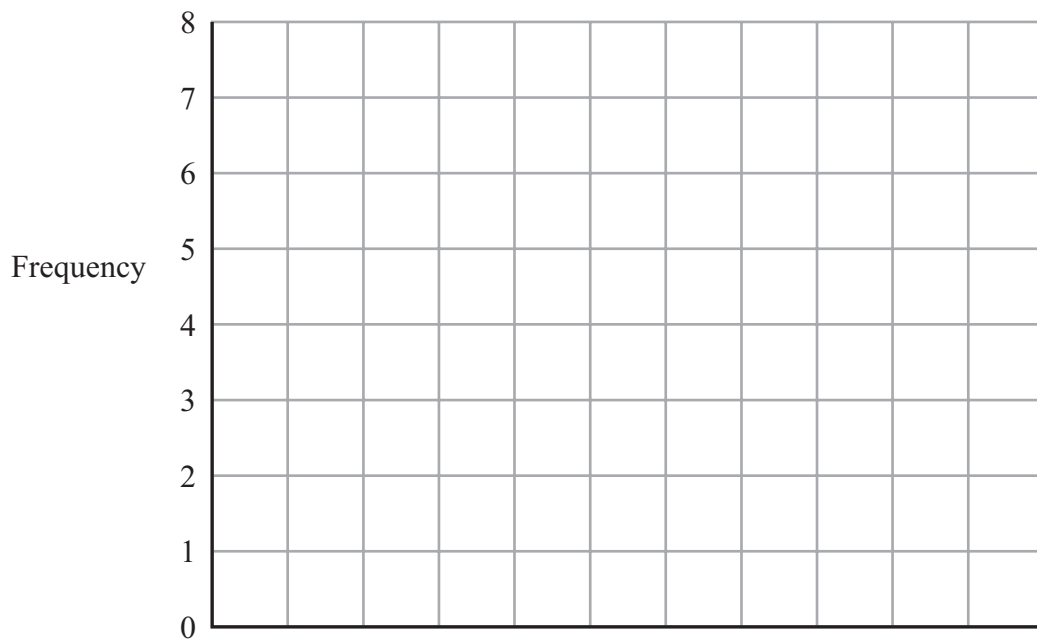
(Total for Question 7 is 4 marks)



8 Here are the favourite colours of all of the students in Ellie's class.

Colour	Frequency
Red	7
Blue	5
Green	4
Pink	6
Yellow	5

(a) On the grid, draw a bar chart for this information.



(3)

(b) Which was the most popular colour?

.....
(1)

(c) How many students are there in Ellie's class?

.....
(1)

(Total for Question 8 is 5 marks)



9 (a) Work out $\frac{5}{8}$ of 360

.....
(2)

(b) Work out 40% of 360

.....
(2)

(Total for Question 9 is 4 marks)

10 (a) Measure the length of the line XY .
Give your answer in centimetres.



..... cm

(1)

(b) Draw an angle of 65° at point P.



(1)

(Total for Question 10 is 2 marks)



- 11** (a) Write these numbers in order of size.
Start with the smallest number.

21 83 9 101 33

.....
(1)

- (b) Write these numbers in order of size.
Start with the smallest number.

1.99 3.01 0.89 6 2.4

.....
(1)

- (c) Write these percentages in order of size.
Start with the smallest percentage.

85% 36% 9% 26% 47%

.....
(1)

(Total for Question 11 is 3 marks)

- 12** Here are some numbers.

5 12 16 24 25 27

From these numbers,

- (a) write down a multiple of 9

.....
(1)

- (b) write down a factor of 36

.....
(1)

- (c) write down a prime number

.....
(1)

(Total for Question 12 is 3 marks)



13 Here is part of a calendar for December 2015

December 2015						
Sun	Mon	Tues	Weds	Thurs	Fri	Sat
		1	2	3	4	5
6	7	8	9	10	11	12

(a) What day of the week is the 26th December 2015?

.....
(1)

(b) What is the date two weeks before the 10th December 2015?

.....
(2)

(Total for Question 13 is 3 marks)



14 Here is Ken's mobile phone bill.

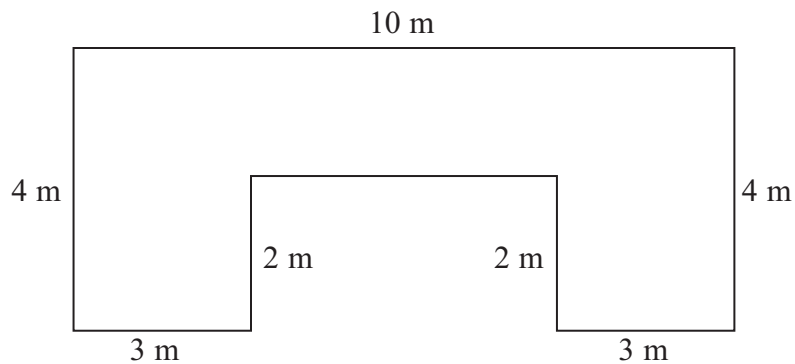
Mobile Phone Bill		December 2014
K. Barby 4 Low St London		
T texts	158 at 10p each	
Calls	75 minutes at 15p a minute	
Monthly charge	£15	

Work out the total that Ken has to pay for this month.

.....
(Total for Question 14 is 4 marks)



15 The diagram shows a patio made from rectangles.



Work out the area of the patio.
You must show all your working.

..... m²

(Total for Question 15 is 3 marks)

TOTAL FOR SECTION A IS 50 MARKS

