

Mark Scheme (Results)

January 2012

Principal Learning IT (IT101)
Paper 1 Technology in Organisations

Edexcel and BTEC Qualifications

Edexcel and BTEC qualifications come from Pearson, the world's leading learning company. We provide a wide range of qualifications including academic, vocational, occupational and specific programmes for employers. For further information, please call our GCE line on 0844 576 0025, our GCSE team on 0844 576 0027, or visit our qualifications website at www.edexcel.com. For information about our BTEC qualifications, please call 0844 576 0026, or visit our website at www.btec.co.uk.

If you have any subject specific questions about this specification that require the help of a subject specialist, you may find our Ask The Expert email service helpful.

Ask The Expert can be accessed online at the following link:

<http://www.edexcel.com/Aboutus/contact-us/>

Alternatively, you can speak directly to a subject specialist at Pearson about Edexcel qualifications on our dedicated ICT telephone line: 0844 372 2186

Pearson: helping people progress, everywhere

Our aim is to help everyone progress in their lives through education. We believe in every kind of learning, for all kinds of people, wherever they are in the world. We've been involved in education for over 150 years, and by working across 70 countries, in 100 languages, we have built an international reputation for raising achievement through innovation in education. Find out more about how we can help you and your students at: www.pearson.com/uk

January 2012

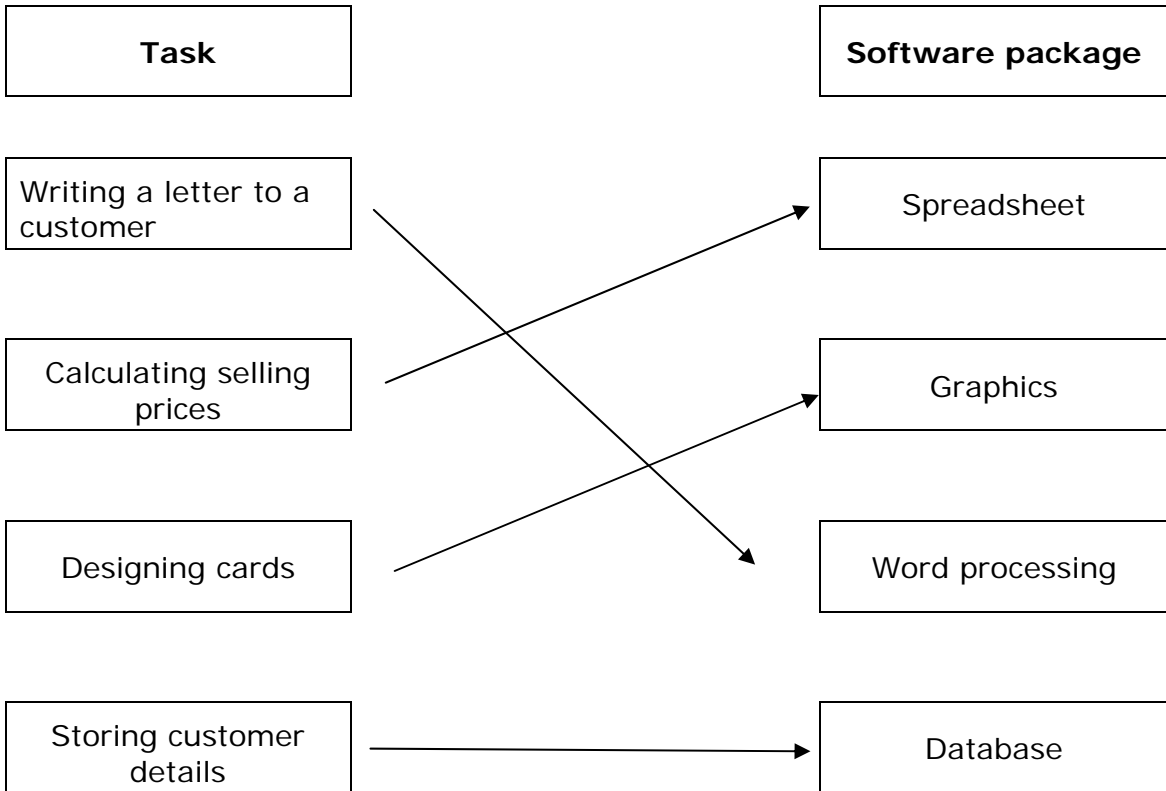
Publications Code DP030705

All the material in this publication is copyright

© Pearson Education Ltd 2012

Question Number	Answer	Mark
1(a)	D	(1)

Question Number	Answer	Mark
1(b)		(4)



Question Number	Answer	Mark
1(c)(i)	C	(1)

Question Number	Answer	Mark
1(c)(ii)	A	(1)

Question Number	Answer	Mark
1(d)	D	(1)

Question Number	Answer	Mark
1(e)	D	(1)

Question Number	Answer	Mark
2(a)	B	(1)

Question Number	Answer	Mark
2(b)	A	(1)

Question Number	Answer	Mark
2(c)	D	(1)

Question Number	Answer	Mark
2(d)	A E F G	(4)

Question Number	Answer	Mark
2(e)	B	(1)

Question Number	Answer	Mark
2(f)	A	(1)

Question Number	Answer	Mark
3(a)	B	(1)

Question Number	Answer	Mark
3(b)	D	(1)

Question Number	Answer	Mark
3(c)	A D E G	(4)

Question Number	Answer	Mark
3(d)	A	(1)

Question Number	Answer	Mark
3(e)	D	(1)

Question Number	Answer	Mark
4(a)	B	(1)

Question Number	Answer	Mark
4(b)	A	(1)

Question Number	Answer	Mark
4(c)	Enter payment card details – 2 Bank authorises payment – 4 Add items to basket – 1 Confirmation message displayed – 5 <i>Bairns-toys</i> contacts bank – 3	(4)

Question Number	Answer	Mark
4(d)	A	(1)

Question Number	Answer	Mark
4(e)(i)	C	(1)

Question Number	Answer	Mark
4(e)(ii)	C	(1)

Question Number	Answer	Mark
4(e)(iii)	C	(1)

Question Number	Answer	Mark
4(f)(i)	B	(1)

Question Number	Answer	Mark
4(f)(ii)	A	(1)

Question Number	Answer	Mark
5(a)	D	(1)

Question Number	Answer	Mark
5(b)	A	(1)

Question Number	Answer	Mark
5(c)	B	(1)

Question Number	Answer	Mark
5(d)	Input Processor Software USB stick	(4)

Further copies of this publication are available from
Edexcel Publications, Adamsway, Mansfield, Notts, NG18 4FN

Telephone 01623 467467

Fax 01623 450481

Email publication.orders@edexcel.com

Order Code DP030705 January 2012

For more information on Edexcel qualifications, please visit
www.edexcel.com/quals

Pearson Education Limited. Registered company number 872828
with its registered office at Edinburgh Gate, Harlow, Essex CM20 2JE

Ofqual



Llywodraeth Cynulliad Cymru
Welsh Assembly Government

