



## Your full BTEC Nationals course guide will be back online soon

We're currently making some revisions to your BTEC Nationals course guide and we'll have your fully updated guide available again very soon.

In the meantime, here's a reminder of why universities, employers and students choose BTEC Nationals.

### Here to help

If you need help or advice, please contact your **subject advisor** who will be happy to help.

### Stay in touch

You can also **sign up** for updates and we'll keep you posted with the latest news and information about your BTEC Nationals.

### The BTEC Team

## Why choose BTEC Nationals?

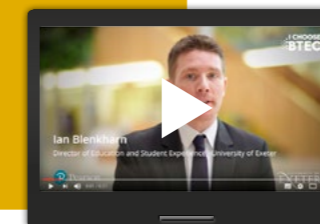
Young people taking their first step into a new career need the right blend of **technical and academic skills** to support them. And we know that employers and Higher Education are looking for highly skilled, job-ready individuals with a strong work ethic.

That's why we've created the new BTEC Nationals in collaboration with over 5,000 universities, employers and professional bodies with **employability at the heart**, so your learners can develop the skills and confidence they will need to step into a prosperous future.



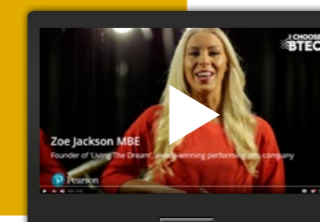
### Why universities choose BTEC

[quals.pearson.com/BTECprogressguide](https://quals.pearson.com/BTECprogressguide)



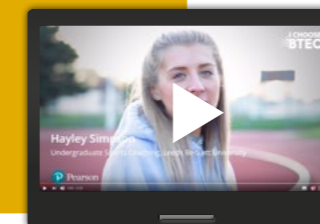
### Why employers choose BTEC

[quals.pearson.com/BTECprogressguide](https://quals.pearson.com/BTECprogressguide)



### Why students choose BTEC

[quals.pearson.com/BTECSuccess](https://quals.pearson.com/BTECSuccess)



**95% of universities and colleges in the UK now accept BTECs** – including Oxford University  
(Source: UCAS, Meeting the Needs of Learners, Providers and Universities (2016))

**The number and proportion of students entering university with a BTEC has doubled** between 2008 and 2014 **from 44K to 85K**  
(Source: UCAS, Meeting the Needs of Learners, Providers and Universities 2016)

**BTECs have the highest rates of learner progression, than any other vocational qualification particularly to Higher Education**  
(Source: Department for Business, Innovation & Skills report on 'Social Mobility: Contribution of Further Education and Skills')