

Teaching Music or Performing Arts at Level 3?



Choose BTEC:

BTEC Nationals in Music
BTEC Nationals in Music Technology
BTEC Nationals in Performing Arts
BTEC Nationals in Production Arts

Welcome to your Guide to the new BTEC Nationals in:

Music
Music Technology
Performing Arts
Production Arts

Your Guide includes everything you need to know about what’s new, why universities and employers are so excited about these new qualifications, and why around 1 in 4 students entering university in the UK do so with a BTEC.*

Contents

3	Why choose BTEC Nationals?
4	What’s new
5	What BTEC Nationals can do for your students
6	BTEC Nationals in Music
14	BTEC Nationals in Music Technology
22	BTEC Nationals in Performing Arts
30	BTEC Nationals in Production Arts
38	Your units explained
40-41	Assessment and Grading
42	Quality Assurance and Administration
43	Support summary
Back cover	Your next steps

* Source: UCAS Progression Pathways – Jan 2016

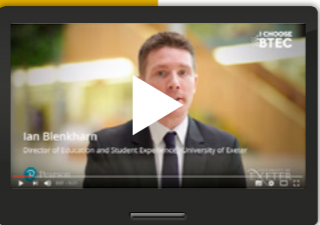
Why choose BTEC Nationals?

Young people taking their first step into a new career need the right blend of **technical and academic skills** to support them. And we know that employers and Higher Education are looking for highly skilled, job-ready individuals with a strong work ethic.

That’s why we’ve created the new BTEC Nationals in collaboration with over 5,000 universities, employers and professional bodies with **employability at the heart**, so your learners can develop the skills and confidence they will need to step into a prosperous future.

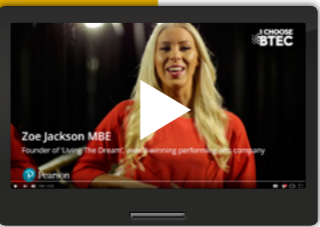
Why universities choose BTEC

quals.pearson.com/BTECprogressguide



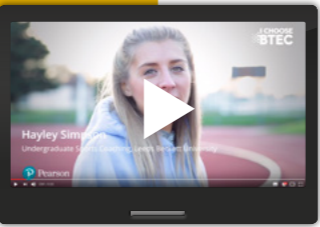
Why employers choose BTEC

quals.pearson.com/BTECprogressguide



Why students choose BTEC

quals.pearson.com/BTECSuccess



95% of universities and colleges in the UK now accept BTECs

– including Oxford University

(Source: UCAS, Meeting the Needs of Learners, Providers and Universities (2016))

The number and proportion of students entering university with a BTEC has doubled

between 2008 and 2014 **from 44K to 85K**

(Source: UCAS, Meeting the Needs of Learners, Providers and Universities 2016)

BTECs have the highest rates of learner progression, than any other vocational qualification particularly to Higher Education

(Source: Department for Business, Innovation & Skills report on 'Social Mobility: Contribution of Further Education and Skills')

See next page for what’s new

What's new

Your new BTEC Nationals retain their familiar practical, unit-by-unit approach and have evolved to reflect feedback from Higher Education, employers and teaching professionals.

This means your new BTEC Nationals now include:

1 Combination of assessment styles

Learners have the opportunity to demonstrate their knowledge, skills and understanding in a range of work-related contexts – **see page 40** for further details.

- **Internal assignments:** Work-related assignments set and marked by the centre.
- **External Tasks:** Practical, work-related tasks, set and marked by Pearson.
- **Written exams:** Written answers to practical questions set and marked by Pearson.
- **Synoptic units:** Students can demonstrate that they can apply skills, knowledge and techniques learned across the qualification. **See pages 8, 16, 24 and 31** for details of synoptic units.

2 Larger foundation of mandatory units

Gives universities and employers confidence that BTEC-qualified candidates have reached a consistent level of core knowledge and skills for their sector.

3 Even more support

We've listened, and have put together our most comprehensive support package yet, including more examples of exemplar materials.

4 Employer involvement

Real work-based experience for those choosing Tech level qualifications – **see page 14** for full details.

What BTEC Nationals can do for your students

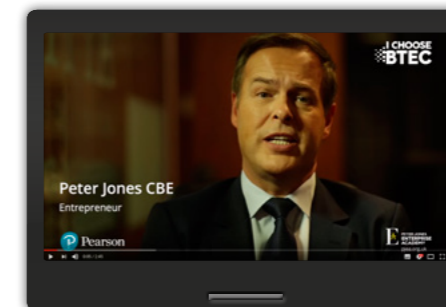
Your new BTEC Nationals offer learners **modern, work-related qualifications** which open the door to higher education and a career because they:

- are each designed with a **clear purpose to support defined progression** routes into higher education or employment
- **build high-level skills** such as teamwork, creative thinking and presentation skills.
- develop **independent research and study skills** essential for success at university.

"BTEC helps students get the skills that today's employers are looking for... BTEC is considered the gold standard of vocational learning."

Peter Jones, CBE

Watch this short video for more from Peter Jones at quals.pearson.com/iChooseBTECguide

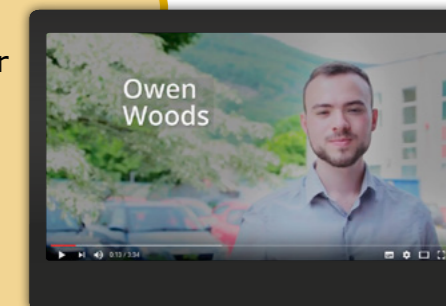


"BTEC students coming with vocational skills can really add something extra to the university setting."

Ian Blenkharn, Director of Education and Student Experience, University of Exeter.

See some great BTEC success stories and hear from our 2106 BTEC Award winners at quals.pearson.com/BTECAwards16Guide.

BTEC AWARDS 2016

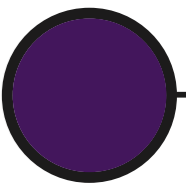
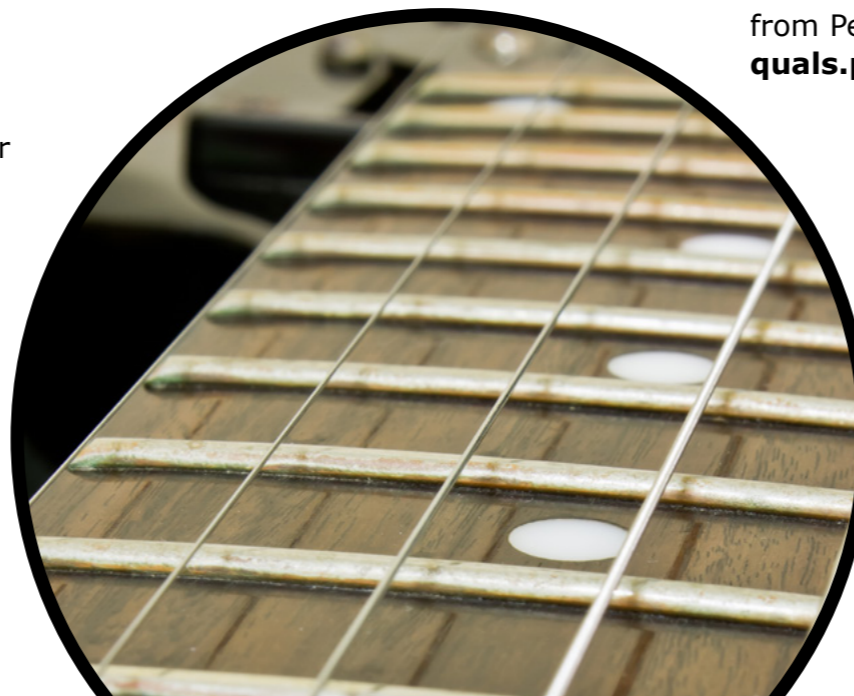


Want to know more?

Visit ichoosebtec.com/guide to see what universities, employers and students have to say about BTEC.

For full details of your BTEC Nationals in Music see next page

See next page to find out what BTECs can do for your students



Your new BTEC Nationals in Music

Your new BTEC Nationals in Music offer a flexible range of qualifications that can be studied alongside other level 3 qualifications such as A levels or other BTEC Nationals as part of a larger programme of study, or as the main focus of study. All sizes attract UCAS points and are widely recognised by universities and employers.

They provide:

- **flexibility** for your students to progress to larger-size qualifications or specialise
- opportunities for students to showcase their skills through **practical assessments**
- the **underpinning knowledge and skills** needed to meet industry requirements
- the **transferable and high-order skills** so highly regarded by HE and employers
- **Applied General** qualification options.

Applied General qualifications

Applied General qualifications are for students progressing to their career through higher level study, although they could go directly into employment at the end of the course.

Students will have the opportunity to:

- **choose between different qualification sizes** so they have the option to study full or part-time or take a BTEC alongside other level 3 qualifications such as A levels
- **develop transferable knowledge and skills.**

HE and Employer support

See the list of organisations who've written letters of support for your new BTEC Nationals in Music at: quals.pearson.com/BTECNatsMusiclettersGuide

Choice of course sizes

Here's an overview of the Applied General-style qualifications for Music. You'll see we've listened to feedback from employers and HE, so there are more mandatory units to ensure all learners master the same foundation of essential knowledge and skills. And, there's still the traditional range of optional units to complete the course. Choose the size that's right for you – and then explore your units in more detail on page 8.

Extended Certificate (360 GLH) NEW	Foundation Diploma (540 GLH) NEW	Diploma (720 GLH) NEW	Extended Diploma (1080 GLH) NEW
Equivalent in size to 1 A levels Applied General TOTAL: 4 UNITS	Equivalent in size to 1.5 A levels Applied General TOTAL: 6 UNITS	Equivalent in size to 2 A levels Applied General TOTAL: 8 UNITS	Equivalent in size to 3 A levels Applied General TOTAL: 13 UNITS
3 MANDATORY UNITS	4 MANDATORY UNITS	6 MANDATORY UNITS	7 MANDATORY UNITS
1 OPTIONAL UNIT	2 OPTIONAL UNITS	2 OPTIONAL UNITS	6 OPTIONAL UNITS
Broad basis for studying the music sector.	Designed as a one-year course - underpinning knowledge for the music sector.	In-depth study for learners studying music alongside other qualifications.	A two-year, full-time course - in-depth study of the music sector.
Supports progression to:	Supports progression to:	Supports progression to:	Supports progression to:
<ul style="list-style-type: none">• higher education (when taken as part of a programme of study that includes other level 3 qualifications.)	<ul style="list-style-type: none">• higher education (when taken as part of a programme of study that includes other level 3 qualifications.)	<ul style="list-style-type: none">• higher education• employment (when combined with other level 3 qualifications.)	<ul style="list-style-type: none">• higher education• employment
Scheduled first teaching: September 2017**	Scheduled first teaching: September 2017**	Scheduled first teaching: September 2017**	Scheduled first teaching: September 2017**

**Submitted for DfE performance measures.

For full details of your BTEC Nationals in Music see next page

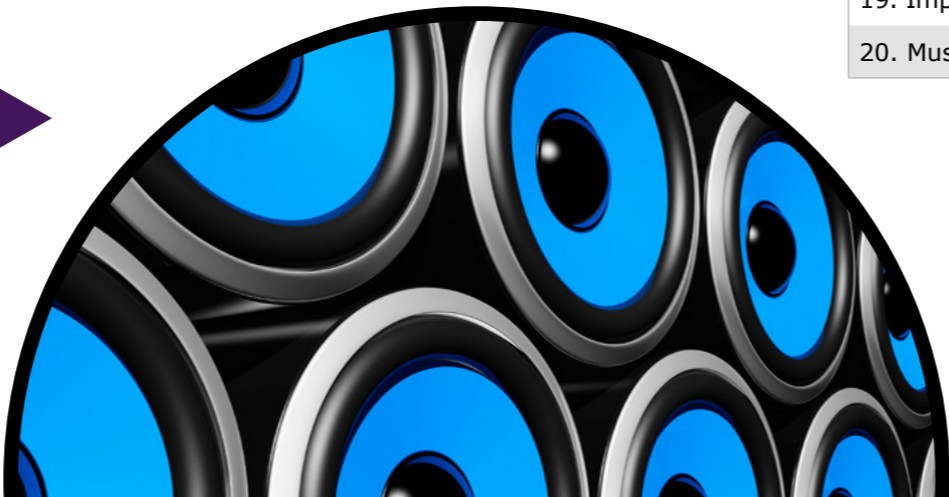
Your choice of course sizes in detail – Mandatory units

Mandatory Unit titles	Assessment type	GLH	Extended Certificate (360 GLH)	Foundation Diploma (510 GLH)	Diploma (720 GLH)	Extended Diploma (1080 GLH)
			Applied General	Applied General	Applied General	Applied General
1. Ensemble Music Performance Techniques	Task	120	MS*	M*	M*	M*
2. Practical Music Theory and Harmony	Assignment	90	M*	M*	M*	M*
3. Professional Practice in the Music Industry	Task	90	M*	M*	M*	M*
4. Music Skills Development	Assignment	90		MS*	M*	M*
5. Music in Context	Task	120			M*	M*
6. Creating a Music Product	Assignment	90			MS*	MS*
7. Critical Listening	Written exam	120				MS*

- Assignment – Set and marked internally
- Task – Set and marked by Pearson
- Written exam – Set and marked by Pearson

M – Mandatory unit
MS – Synoptic unit
* – Students must pass this unit (see page 38 for more details)

See opposite page for optional units

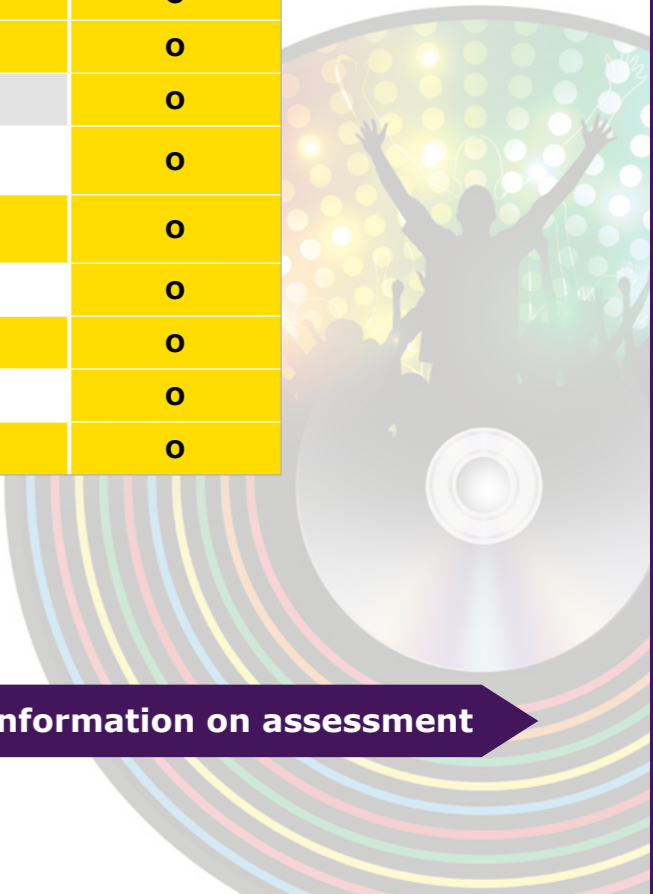


Your choice of course sizes in detail – Optional Units

Optional Unit titles	Assessment type	GLH	Extended Certificate (360 GLH)	Foundation Diploma (510 GLH)	Diploma (720 GLH)	Extended Diploma (1080 GLH)
			Applied General	Applied General	Applied General	Applied General
			Choose 1	Choose 2	Choose 2	Choose 6
8. Arranging Music	Assignment	60			O	O
9. Composing Music	Assignment	60	O	O	O	O
10. Music and sound for the Moving Image	Assignment	60				O
11. Contemporary Songwriting Techniques	Assignment	60				O
12. Music Promotion	Assignment	60	O	O	O	O
13. Live Music Events	Assignment	60		O	O	O
14. Music Investigation	Assignment	60				O
15. Contemporary Art Music in Practice	Assignment	60				O
16. Music Performance Session Styles	Assignment	60	O	O	O	O
17. Vocal Development	Assignment	60				O
18. Solo Performance	Assignment	60	O	O	O	O
19. Improvising Music	Assignment	60				O
20. Music Software Skills	Assignment	60	O	O	O	O

- Assignment – Set and marked internally
- O – Optional Unit

See next page for information on assessment



Practical assessment

Your BTEC Nationals in Music learners will apply their learning through practical assessments in the form of internally assessed **assignments** and externally assessed **tasks** and **written exams**.

Your detailed unit charts on **pages 8 and 9** show how each unit is assessed as well as the expected guided learning hours.

Here's a brief guide to your BTEC Nationals in Music assessment:

1 Assignments – internally assessed by you

The same BTEC tried-and-tested teaching and assessment style teachers and students know and love.

For internally assessed assignments, you and your programme team draw up an assessment plan and create an assignment brief for your students to then carry out set tasks and create evidence around work-related scenarios.

Assignments can include research, projects, investigations, fieldwork and experiments and often link theory with practical exercises.

How we help you:

- We provide **authorised assignment briefs** – once you've verified these are suitable for your learners they are ready to use.
- You can download our **guide to writing assignments** if you prefer to create your own.
- We've an **assessment plan template** you can download to save you time.

Browse our step-by-step guide to delivering BTEC at:

quals.pearson.comBTECstepbystep and find out about all the support available on page 43 of this guide.

Learn more about assessment and grading

You'll find detailed unit and assessment information in your Specification at **quals.pearson.com/BTECNatsMusic16Guide**

Download your exam timetable at **quals.pearson.com/BTECexamsGuide**

2 Tasks – set and marked by Pearson

Unit 1: Ensemble Music Performance

Mandatory unit for **all qualifications**.

A task taken under supervised conditions. Learners will be provided with the set task booklet in January to prepare for the development and completion of the group performance. Final evidence will be completed in 6 hours under supervised conditions.

Frequency: Once a year
First assessment window: May/June 2018

Unit 3: Professional Practice in the Music Industry

Mandatory unit for **all qualifications**.

A supervised written assessment task completed under supervised conditions within 3 hours. Learners will be given a pre-released industry-specific scenario in order to carry out research prior to completing the task.

Frequency: Twice yearly
First assessment window: May/June 2018

Unit 5: Music in Context

Mandatory unit for **Diploma and Extended Diploma qualifications**.

A task taken under supervised conditions in two parts. Learners complete a three hour research task followed by a three hour written task completed on a computer. The task is based on a musical genre and the surrounding external contextual factors.

Frequency: Twice yearly
First assessment window: January 2019

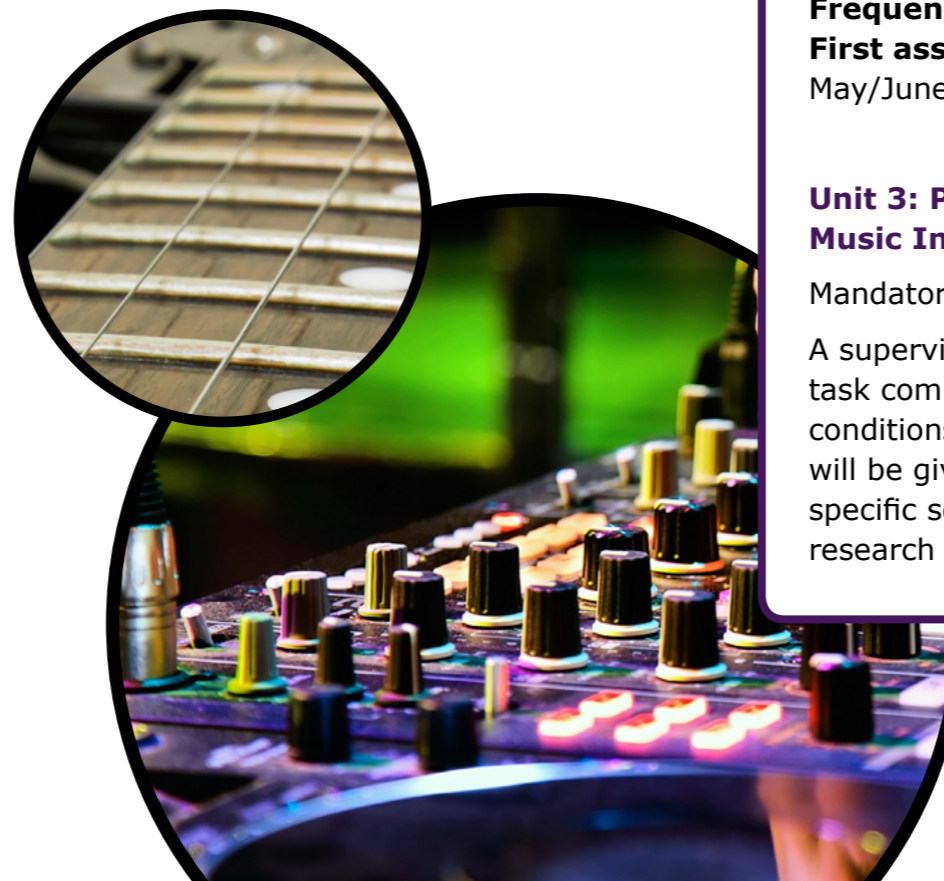
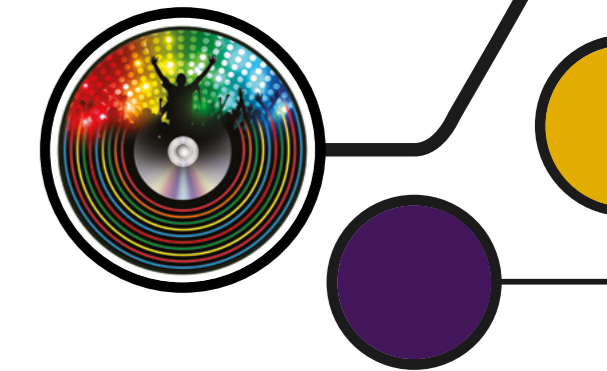
3 Written Exam – set and marked by Pearson

Unit 7: Critical Listening

Mandatory unit for **Extended Diploma qualifications**.

A 2-hour written examination. Learners will be given pieces of music to listen to and answer a mix of short and long answer questions designed to test their understanding of the pieces provided.

Frequency: Twice yearly
First assessment window: January 2019



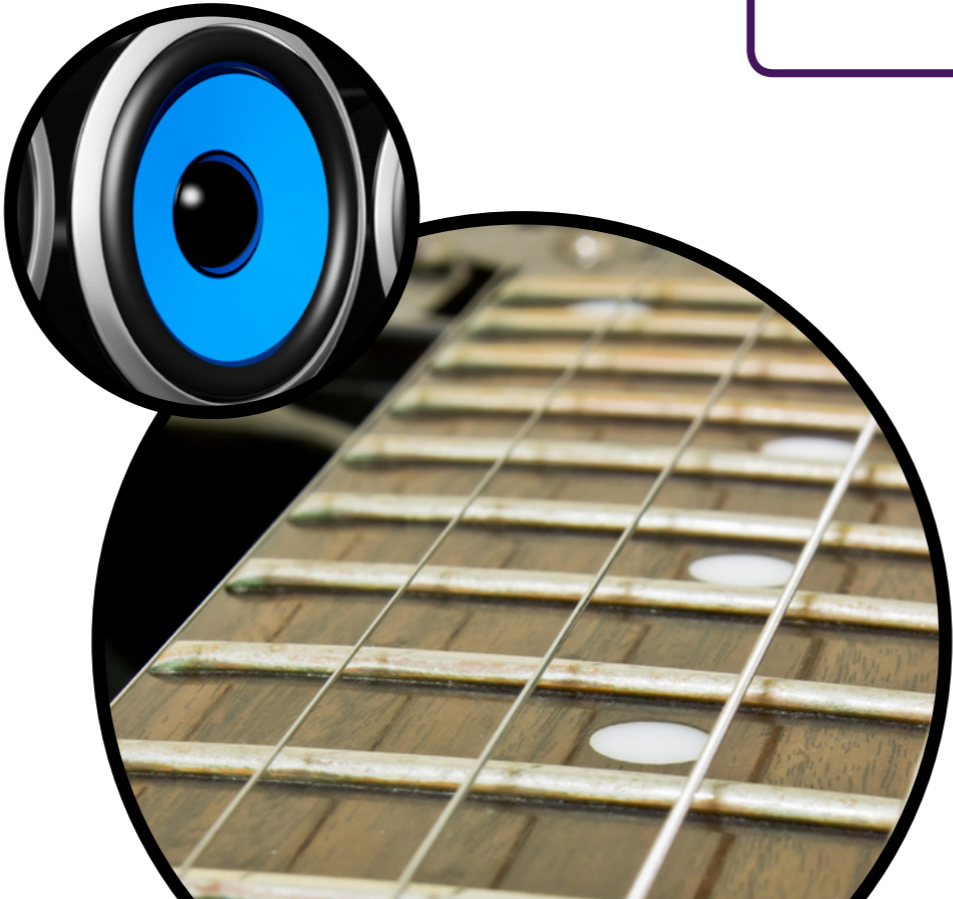
Resources

Your new BTEC Nationals in Music have a comprehensive range of support available to help with planning, teaching, assessing and tracking progress of your learners and also for training and professional development. **See page 43** for a summary of when and how you can use our resources.

Free resources

Along with this course guide, you have access to the following free-to-download support at quals.pearson.com/BTECNatsMusic16Guide:

- Specifications
- Skills for Learning and Work activity sheets
- Schemes of Work
- Sample Assessment Material
- Delivery Guides
- Quality Assurance Handbooks
- Authorised Assignment Briefs
- Specimen Papers and Mark Schemes
- myBTEC

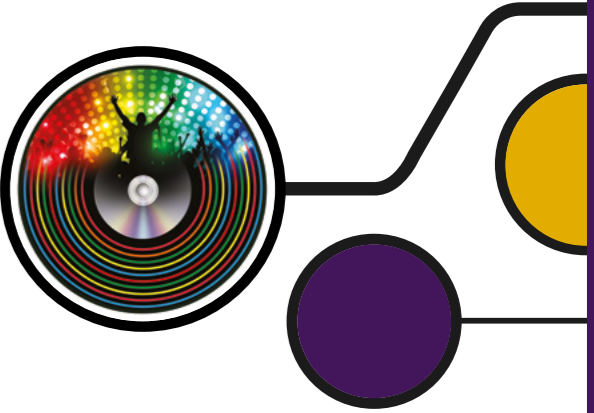


Training and professional development

You also have access to a wide range of training courses such as:

- FREE face-to-face and online events such as Getting Ready to Teach events
- Centre-based paid-for events.

Find out more at quals.pearson.com/BTECTraining16Guide.



See next page for BTEC Nationals in Music Technology

Your new BTEC Nationals in Music Technology

Your new BTEC Nationals in Music Technology offer a flexible range of qualifications that can be studied alongside other level 3 qualifications such as A levels or other BTEC Nationals as part of a larger programme of study, or as the main focus of study. All sizes attract UCAS points and are widely recognised by universities and employers.

They provide:

- **flexibility** for your students to progress to larger-size qualifications or specialise
- opportunities for students to showcase their skills through **practical assessments**
- the **underpinning knowledge and skills** needed to meet industry requirements
- the **transferable and high-order skills** so highly regarded by HE and employers
- **Tech Level** qualifications with clear purpose and progression to higher education or employment.

Tech Level qualifications

Tech Level qualifications are for students wishing to progress directly to employment or apprenticeships through specialist study, or choose to go on to higher level study.

Students will have the opportunity to:

- choose between different qualification sizes so they have the option to study full or part-time or take a BTEC alongside other level 3 qualifications such as A levels
- equip themselves with specialist knowledge and skills for their chosen career path
- develop transferable knowledge and skills.



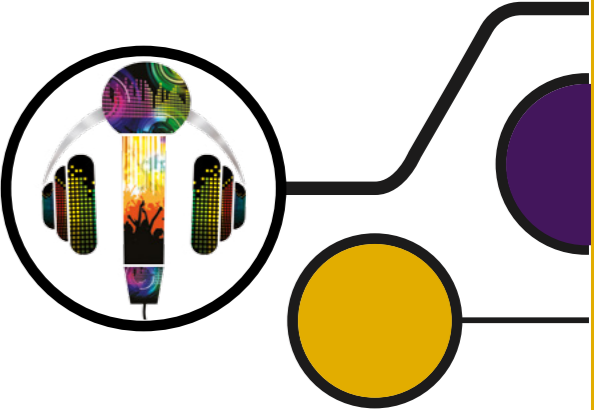
HE and Employer support

See the list of organisations who've written letters of support for your new BTEC Nationals in Music Technology at: quals.pearson.com/BTECNatsMusicTechlettersGuide



Choice of course sizes

Here's an overview of the Tech level-style qualifications for Music Technology. You'll see we've listened to feedback from employers and HE, so there are more mandatory units to ensure all learners master the same foundation of essential knowledge and skills. And, there's still the traditional range of optional units to complete the course. Choose the size that's right for you – and then explore your units in more detail on page 16.



Foundation Diploma (540 GLH) NEW	Diploma (720 GLH)	Extended Diploma (1080 GLH)
Equivalent in size to 1.5 A levels Tech Level TOTAL: 6 UNITS	Equivalent in size to 2 A levels Tech Level TOTAL: 10 UNITS	Equivalent in size to 3 A levels Tech Level TOTAL: 14 UNITS
4 MANDATORY UNITS	5 MANDATORY UNITS	7 MANDATORY UNITS
2 OPTIONAL UNITS	5 OPTIONAL UNITS	7 OPTIONAL UNITS
Designed as a one-year course for in depth study of the sector.	In-depth study for learners studying music technology alongside other qualifications.	A two-year, full-time course - in-depth study of the music technology-sector.
Supports progression to:	Supports progression to:	Supports progression to:
<ul style="list-style-type: none">• apprenticeship• higher education (when taken as part of a programme of study that includes other level 3 qualifications.)	<ul style="list-style-type: none">• higher education• employment (when combined with other level 3 qualifications.)	<ul style="list-style-type: none">• higher education• employment

Scheduled first teaching: **September 2017****

Scheduled first teaching: **September 2016***

Scheduled first teaching: **September 2016***

*Included on the DfE's 16-19 performance measures in England.

**Submitted for DfE performance measures.

Employer involvement

In Tech Level qualifications, students have the opportunity to learn first hand from practising professionals and real employment environments, allowing them to fully appreciate what's involved in their chosen career.

- Activities can take place inside a workplace (e.g. structured work experience aligned to unit content) and/or
- Employers can be involved in the delivery of the qualification content, as guest lecturers, setting or assessing assignments.

You select the best blend of activities for your students.

Find full guidance in section 1, 4 and 8 of your qualification specification at quals.pearson.com/BTECNatsMusicTechguide

See next page for your units in detail

Your choice of course sizes in detail – Mandatory units

Mandatory Unit titles	Assessment type	GLH	Foundation Diploma (540 GLH) 2017	Diploma (720 GLH) 2016	Extended Diploma (1080 GLH) 2016
			Tech Level	Tech Level	Tech Level
1. Live Sound	Assignment	60		M	M
2. Studio Recording Techniques	Assignment	60	M*	M*	M*
3. Music and Sound for Media	Assignment	60	M*	M	M
4. Music Technology Project	Assignment	120			MS*
5. Music Technology in Context	Task	120	M*	M*	M*
6. DAW Production	Task	120		MS*	MS*
7. Music Technology Enterprise Opportunities	Task	120	MS*		M*

Assignment – Set and marked internally

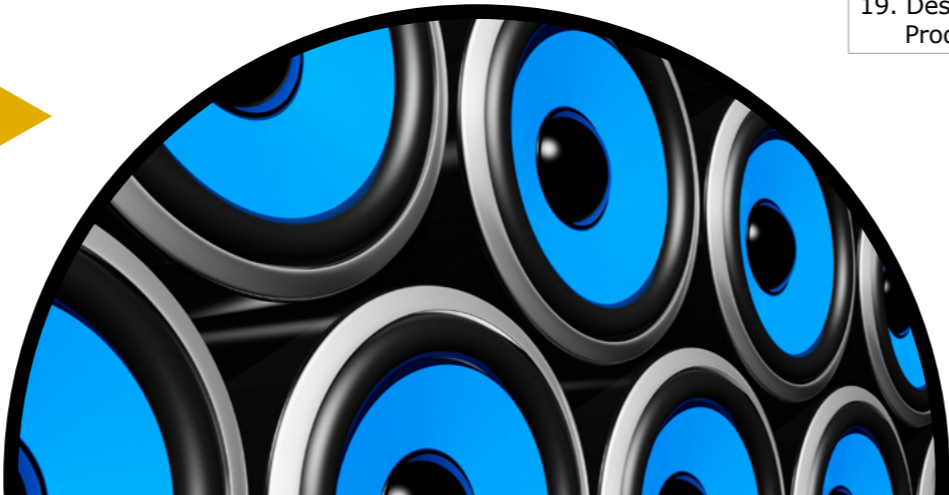
Task – Set and marked by Pearson

M – Mandatory unit

MS – Synoptic unit

* – Students must pass this unit (see page 38 for more details)

See opposite page for optional units



Your choice of course sizes in detail – Optional Units

Optional Unit titles	Assessment type	GLH	Foundation Diploma (540 GLH) 2017	Diploma (720 GLH) 2016	Extended Diploma (1080 GLH) 2016
			Tech Level	Tech Level	Tech Level
			Choose 2 from 7	Choose 5 from 7	Choose 7 from 12
8. Creative Synthesis and Sampling	Assignment	60	O	O	O
9. Composing Music	Assignment	60			O
10. Remixing and Reworking	Assignment	60	O	O	O
11. DJ Performance Techniques	Assignment	60			O
12. Music Technology in Performance	Assignment	60		O	O
13. Mixing and Mastering Techniques	Assignment	60	O	O	O
14. Studio Design and Acoustics	Assignment	60			O
15. Music Investigation	Assignment	60	O	O	O
16. Commercial Music Production	Assignment	60	O		O
17. Music Technology and Musicianship	Assignment	60	O	O	O
18. Working and Developing as a Production Team	Assignment	60	O	O	O
19. Designing a Music Technology Product	Assignment	60			O

Assignment – Set and marked internally

O – Optional Unit

See next page for information on assessment



Practical assessment

Your BTEC Nationals in Music Technology learners will apply their learning through practical assessments in the form of internally assessed **assignments** and externally assessed **tasks**.

Your detailed unit charts on **pages 16-17** show how each unit is assessed as well as the expected guided learning hours.

Here's a brief guide to your BTEC Nationals in Music Technology assessment:

1 Assignments – internally assessed by you

The same BTEC tried-and-tested teaching and assessment style teachers and students know and love.

For internally assessed assignments, you and your programme team draw up an assessment plan and create an assignment brief for your students to then carry out set tasks and create evidence around work-related scenarios.

Assignments can include research, projects, investigations, fieldwork and experiments and often link theory with practical exercises.

How we help you:

- We provide **authorised assignment briefs** – once you've verified these are suitable for your learners they are ready to use.
- You can download our **guide to writing assignments** if you prefer to create your own.
- We've an **assessment plan template** you can download to save you time.

Browse our step-by-step guide to delivering BTEC at:

quals.pearson.com/BTECstepbystepGuide and find out about all the support available on page 43 of this guide.

Learn more about assessment and grading

You'll find detailed unit and assessment information in your Specification at **quals.pearson.com/BTECNatsMusicTech16Guide**

Download your exam timetable at **quals.pearson.com/BTECexamsGuide**



2 Tasks – set and marked by Pearson

Unit 5: Music Technology in Context

Mandatory unit for **all qualifications**.

A written task taken under supervised conditions in two parts. Learners complete a three-hour research task followed by a three-hour written task.

Frequency: Twice yearly
First assessment window: May/June 2017

Unit 6: DAW Production

Mandatory unit for **Diploma and Extended Diploma qualifications**.

A supervised practical assessment task completed within 15 hours and arranged over a number of sessions in a two week period. The final submission will be completed on a computer will include:

- a fully produced, arranged and mixed piece of music with a minute and 30 second edit
- written production notes highlighting the key creative techniques used.

Frequency: Once a year
First assessment window: May/June 2017

Unit 7: Music Technology Opportunities

Mandatory unit for **Foundation Diploma and Extended Diploma qualifications**.

A supervised assessment task completed under supervised conditions within 12 hours over a two-week period. Learners will respond to a music technology enterprise brief and submit a digital folder of written and video footage.

Frequency: Once a year
First assessment window: May/June 2017



Resources

Your new BTEC Nationals in Music Technology have a comprehensive range of support available to help with planning, teaching, assessing and tracking progress of your learners and also for training and professional development. **See page 43** for a summary of when and how you can use our resources.

Free resources

Along with this course guide, you have access to the following free-to-download support at quals.pearson.com/BTECNatsMusicTech16Guide:

- Specifications
- Skills for Learning and Work activity sheets
- Schemes of Work
- Sample Assessment Material
- Delivery Guides
- Quality Assurance Handbooks
- Authorised Assignment Briefs
- Specimen Papers and Mark Schemes
- myBTEC

Training and professional development

You also have access to a wide range of training courses such as:

- FREE face-to-face and online events such as Getting Ready to Teach events
- Centre-based paid-for events.

Find out more at quals.pearson.com/BTECTraining16Guide.



See next page for BTEC Nationals in Performing Arts

Your new BTEC Nationals in Performing Arts

Your new BTEC Nationals in Performing Arts offer Applied General qualifications that can be studied alongside other level 3 qualifications such as A levels or other BTEC Nationals as part of a larger programme of study, or as the main focus of study. All sizes attract UCAS points and are widely recognised by universities and employers.

They provide:

- **flexibility** for your students to progress to larger-size qualifications or specialise
- opportunities for students to showcase their skills through **practical assessments**
- the **underpinning knowledge and skills** needed to meet industry requirements
- the **transferable and high-order skills** so highly regarded by HE and employers
- **Applied General qualifications** with clear purpose and progression to higher education or employment.

Applied General qualifications

Applied General qualifications are for students progressing to their career through higher level study, although they could go directly into employment at the end of the course.

Students will have the opportunity to:

- **choose between different qualification sizes** so they have the option to study full or part-time or take a BTEC alongside other level 3 qualifications such as A levels
- develop **transferable knowledge and skills**.

HE and Employer support

See the list of organisations who've written letters of support for your new BTEC Nationals in Performing Arts at: quals.pearson.com/BTECNatsPerfArtslettersGuide



Choice of course sizes

Here's an overview of the Applied General-style qualifications for Performing Arts. You'll see we've listened to feedback from employers and HE, so there are more mandatory units to ensure all learners master the same foundation of essential knowledge and skills. And, there's still the traditional range of optional units to complete the course.



Certificate (180 GLH)	Extended Certificate (360 GLH)	Foundation Diploma (510 GLH)	Diploma (720 GLH)	Extended Diplomas General/Acting/ Dance/ Musical Theatre (1080 GLH)
Equivalent in size to 0.5 A levels Applied General TOTAL: 2 UNITS	Equivalent in size to 1 A level Applied General TOTAL: 4 UNITS	Equivalent in size to 1.5 A levels Applied General TOTAL: 6 UNITS	Equivalent in size to 2 A levels Applied General TOTAL: 8 UNITS	Equivalent in size to 3 A levels Applied General TOTAL: 13 UNITS
2 MANDATORY UNITS	3 MANDATORY UNITS	4 MANDATORY UNITS	6 MANDATORY UNITS	7 MANDATORY UNITS
0 OPTIONAL UNITS	1 OPTIONAL UNIT	2 OPTIONAL UNITS	2 OPTIONAL UNITS	6 OPTIONAL UNITS
Basic introduction to studying Performing Arts.	In-depth study for learners studying Performing Arts alongside other qualifications.	In-depth study for learners studying Performing Arts alongside other qualifications.	In-depth study for learners studying Performing Arts alongside other qualifications.	In-depth study for learners studying Performing Arts alongside other qualifications.
Supports progression to:	Supports progression to:	Supports progression to:	Supports progression to:	Supports progression to:
<ul style="list-style-type: none">• further education or higher education• employment (when studied alongside other level 3 qualifications.)	<ul style="list-style-type: none">• further education or higher education• employment (when studied alongside other level 3 qualifications.)	<ul style="list-style-type: none">• further education or higher education• employment (when studied alongside other level 3 qualifications.)	<ul style="list-style-type: none">• further education or higher education• employment (when studied alongside other level 3 qualifications.)	<ul style="list-style-type: none">• further education or higher education• employment (when studied alongside other level 3 qualifications.)
<i>Scheduled first teaching:</i> September 2016*	<i>Scheduled first teaching:</i> September 2016*	<i>Scheduled first teaching:</i> September 2016*	<i>Scheduled first teaching:</i> September 2016*	<i>Scheduled first teaching:</i> September 2016*

*Included on the DfE's 16-19 performance measures in England.

See next page for your units in detail

Your choice of course sizes in detail

Mandatory Unit titles	Assessment type	GLH	Certificate (180 GLH)	Extended Certificate (360 GLH)	Foundation Diploma (510 GLH)	Diploma (720 GLH)	Extended Diploma (1080 GLH)			
							General	Dance	Acting	Musical Theatre
			Applied General	Applied General	Applied General	Applied General	Applied General	Applied General	Applied General	Applied General
1. Investigating Practitioners’ Work	Task	90	M*	M*	M*	M*	M*	M*	M*	M*
2. Developing Skills and Techniques for Live Performance	Assignment	90	M*	M*	M*	M*	M*	M*	M*	M*
3. Group Performance Workshop	Task	120		M*	M*	M*	M*	M*	M*	M*
4. Performing Arts in the Community	Assignment	90			M*	M*	M*	M*	M*	M*
5. Individual Performance Commission	Task	120				M*	M*	M*	M*	M*
6. Final Live Performance to an Audience	Assignment	90				M*	M*	M*	M*	M*
7. Employment Opportunities in the Performing Arts	Task	120					M*	M*	M*	M*

Optional Unit titles	Assessment type	GLH	Certificate (180 GLH)	Extended Certificate (360 GLH)	Foundation Diploma (510 GLH)	Diploma (720 GLH)	Extended Diploma (1080 GLH)			
							General	Dance	Acting	Musical Theatre
			Applied General	Applied General	Applied General	Applied General	Applied General	Applied General	Applied General	Applied General
			n/a	Choose 1 from 5	Choose 2 from 11	Choose 2 from 20	Choose 6 0-3 from A 0-3 from B 0-3 from C 3-6 from D	Choose 6 4-6 from A 0-2 from B	Choose 6 4-6 from A 0-2 from B	Choose 6 4 from A 2 from B
8. Classical Ballet Technique	Assignment	60		O	O	O	A	A		B
9. Tap Dance Technique	Assignment	60		O	O	O	A	A		B
10. Jazz Dance Technique	Assignment	60		O	O	O	C	A		A
11. Street Dance Technique	Assignment	60		O	O	O	A	A		B
12. Contemporary Dance Technique	Assignment	60		O	O	O	A	A		B
13. Healthy Dancer	Assignment	60			O	O	D	B		B
14. Choreography for Live Performance	Assignment	60		O	O	O	A	A		

Assignment – Set and marked internally

Task – Set and marked by Pearson

M – Mandatory unit

* – Students must pass this unit (see page 38 for more details)

Your choice of course sizes in detail

Optional Unit titles (continued)	Assessment type	GLH	Certificate (180 GLH)	Extended Certificate (360 GLH)	Foundation Diploma (510 GLH)	Diploma (720 GLH)	Extended Diploma (1080 GLH)			
							General	Dance	Acting	Musical Theatre
			Applied General	Applied General	Applied General	Applied General	Applied General	Applied General	Applied General	Applied General
			n/a	Choose 1 from 5	Choose 2 from 11	Choose 2 from 20	Choose 6 0-3 from A 0-3 from B 0-3 from C 3-6 from D	Choose 6 4-6 from A 0-2 from B	Choose 6 4-6 from A 0-2 from B	Choose 6 4 from A 2 from B
15. Theatre Directing	Assignment	60					O	O	B	A
16. Writing for Performance	Assignment	60					O	O	B	A
17. Screen Acting	Assignment	60					B		A	
18. Interpreting Classical Text for Performance	Assignment	60		O	O	O	B		A	
19. Acting Styles	Assignment	60		O	O	O	C		A	A
20. Developing the Voice for Performance	Assignment	60		O	O	O	B		A	B
21. Improvisation	Assignment	60		O	O	O	D	B	B	
22. Movement in Performance	Assignment	60		O	O	O	D	B	B	B
23. Singing Techniques for Performers	Assignment	60			O	O	C	B	B	A
24. Children’s Theatre Performance	Assignment	60					D		B	
25. Site Specific Performance	Assignment	60					D	B	B	
26. Physical Theatre Techniques	Assignment	60		O	O	O	D	B	B	B
27. Musical Theatre Techniques	Assignment	60		O	O	O	C	B		A
28. Variety Performance	Assignment	60		O	O	O	D	B	B	
29. Storytelling	Assignment	60			O	O	D		B	
30. Audio Performance	Assignment	60					D		B	
31. Stand-up Comedy Technique	Assignment	60			O	O	D			
32. Puppetry Technique	Assignment	60					D		B	
33. Performing with Masks	Assignment	60					D		B	

O – Optional Unit

A - Group A Optional Units

B - Group B Optional Units

C - Group C Optional Units

D - Group D Optional Units

See next page for information on assessment

Practical assessment

Your BTEC Nationals in Performing Arts students will apply their learning through practical assessments in the form of internally assessed **assignments** and externally assessed **tasks**.

Your detailed unit charts on **pages 24 and 25** show how each unit is assessed as well as the expected guided learning hours.

Here's a brief guide to your BTEC Nationals in Performing Arts assessment:

1 Assignments – internally assessed by you

The same BTEC tried-and-tested teaching and assessment style teachers and students know and love.

For internally assessed assignments, you and your programme team draw up an assessment plan and create an assignment brief for your students to then carry out set tasks and create evidence around work-related scenarios.

Assignments can include research, projects, investigations, fieldwork and experiments and often link theory with practical exercises.

How we help you:

- We provide **authorised assignment briefs** – once you've verified these are suitable for your learners they are ready to use.
- You can download our **guide to writing assignments** if you prefer to create your own.
- We've an **assessment plan template** you can download to save you time.

Browse our step-by-step guide to delivering BTEC at:

quals.pearson.com/BTECstepbystepGuide and find out about all the support available on page 43 of this guide.

Learn more about assessment and grading

You'll find detailed unit and assessment information in your Specification at **quals.pearson.com/BTECNatsPerfArts16Guide**

Download your exam timetable at **quals.pearson.com/BTECexamsGuide**

2 Tasks – set and marked by Pearson

Unit 1: Investigating Practitioners' Work

Mandatory unit for **all qualifications**.

A written assessment task completed under supervised conditions completed within 3 hours. Learners will receive the set task booklet four weeks prior to the supervised assessment period in order to carry out investigations and critical analysis.

Frequency: Twice yearly

First assessment window:
May/June 2017

Unit 3: Group Performance Workshop

Mandatory unit for **Extended Certificate, Foundation Diploma, Diploma and Extended Diploma qualifications**.

A supervised assessment task completed under supervised conditions. Learners will be provided with the set task booklet in January in order to prepare for the development and completion of the group performance the their digital process log. The final evidence will be completed within 5 hours under supervised conditions.

Frequency: Once a year

First assessment window:
May/June 2017

Unit 5: Individual Performance Commission

Mandatory unit for **Diploma and Extended Diploma qualifications**.

A supervised assessment task completed under supervised conditions. Learners will be provided with the set task booklet for a six week term time period in order to carry out research, planning, development and rehearsal for submission. Final evidence will be completed within 2 hours under supervised conditions.

Frequency: Once a year

First assessment window:
May/June 2018

Unit 7: Employment Opportunities in Performing Arts

Mandatory unit for **Extended Diploma qualifications**.

A supervised assessment task completed under supervised conditions. Learners will be provided with the set task booklet for a four week term time period in order to prepare material for their portfolio. Final evidence will be completed within 10 hours under supervised conditions.

Frequency: Twice yearly

First assessment window:
June 2018



Resources

Your new BTEC Nationals in Performing Arts have a comprehensive range of support available to help with planning, teaching, assessing and tracking progress of your learners and also for training and professional development. **See page 43** for a summary of when and how you can use our resources.

Free resources

Along with this course guide, you have access to the following free-to-download support at **quals.pearson.com/BTECNatsPerfArts16Guide**:

- Specifications
- Skills for Learning and Work activity sheets
- Schemes of Work
- Sample Assessment Material
- Delivery Guides
- Quality Assurance Handbooks
- Authorised Assignment Briefs
- Specimen Papers and Mark Schemes
- myBTEC

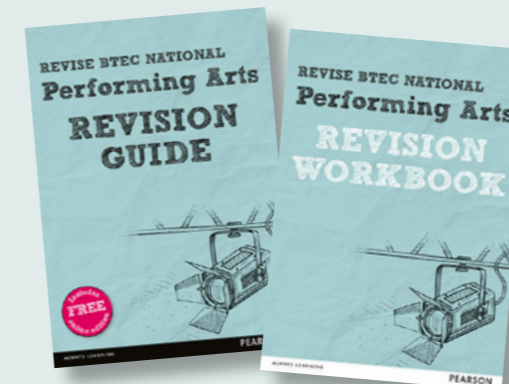
Paid for resources*

Pearson BTEC Nationals in Performing Arts:

- Revision Guide
- Revision Workbook

To find our more or download sample units go to:

www.pearsonfe.co.uk/BTECNatsPerfArts16Guide



*Published resources are available from a range of publishers and are not a pre-requisite to delivering this qualification.

Training and professional development

You also have access to a wide range of training courses such as:

- FREE face-to-face and online events such as Getting Ready to Teach events
- Centre-based paid-for events.

Find out more at **quals.pearson.com/BTECTraining16Guide**.



See next page for BTEC Nationals in Production Arts

Your new BTEC Nationals in Production Arts

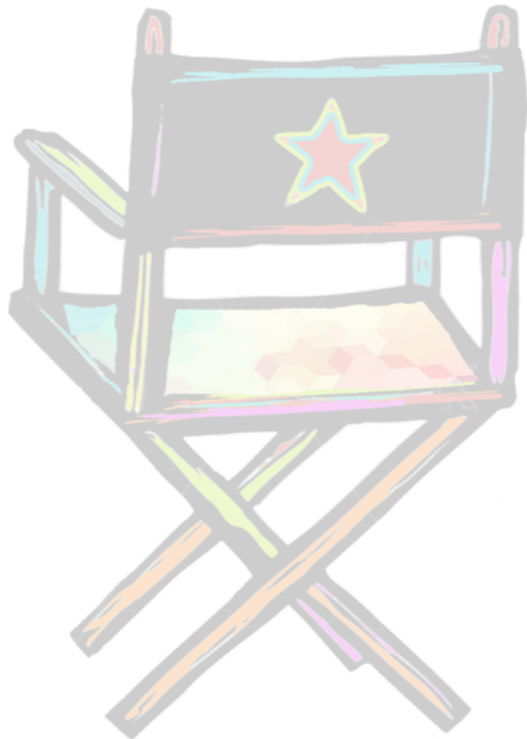
Your new BTEC Nationals in Production Arts offer Applied General qualifications that can be studied alongside other level 3 qualifications such as A levels or other BTEC Nationals as part of a larger programme of study, or as the main focus of study. All sizes attract UCAS points and are widely recognised by universities and employers.

They provide:

- **flexibility** for your students to progress to larger-size qualifications or specialise
- opportunities for students to showcase their skills through **practical assessments**
- the **underpinning knowledge and skills** needed to meet industry requirements
- the **transferable and high-order skills** so highly regarded by HE and employers
- **Applied General qualifications** with clear purpose and progression to higher education or employment.
- Opportunity to **co-teach** this with the BTEC Nationals in Performing Arts.

HE and Employer support

See the list of organisations who've written letters of support for your new BTEC Nationals in Production Arts at:
quals.pearson.com/BTECNatsProdArtslettersGuide



Choice of course sizes

Here's an overview of the Applied General-style qualifications for Production Arts. You'll see we've listened to feedback from employers and HE, so there are more mandatory units to ensure all learners master the same foundation of essential knowledge and skills. And, there's still the traditional range of optional units to complete the course.

Extended Certificate (360 GLH)	Foundation Diploma (510 GLH)
Equivalent in size to 1 A level	Equivalent in size to 1.5 A levels
Applied General	Applied General
TOTAL: 4 UNITS	TOTAL: 6 UNITS
3 MANDATORY UNITS	4 MANDATORY UNITS
1 OPTIONAL UNIT	2 OPTIONAL UNITS
A broad study of the production arts sector.	Covers the fundamentals of the production arts sector.
Supports progression to:	Supports progression to:
<ul style="list-style-type: none">• further education or higher education• employment (when studied alongside other level 3 qualifications.)	<ul style="list-style-type: none">• apprenticeship• further study at Level 3• higher education (when studied alongside other level 3 qualifications.)

Scheduled first teaching:
September 2017**

Scheduled first teaching:
September 2017**

**Submitted for DfE performance measures.



Applied General qualifications

Applied General qualifications are for students progressing to their career through higher level study, although they could go directly into employment at the end of the course.

Students will have the opportunity to:

- **choose between different qualification sizes** so they have the option to study full or part-time or take a BTEC alongside other level 3 qualifications such as A levels
- develop **transferable knowledge and skills**.

See next page for your units in detail

Your choice of course sizes in detail – Mandatory units

Mandatory Unit titles	Assessment type	GLH	Extended Certificate (360 GLH)	Foundation Diploma (510 GLH)
			Applied General	Applied General
1. Investigating Production Arts Practitioner Work	Task	90	M*	M*
2. Developing Production Skills and Techniques for Live Performance	Assignment	90	M*	M*
3. Production Design and Realisation	Task	120	M*	MS(P)
4. Manage a Production	Assignment	90		M*

Assignment – Set and marked internally

Task – Set and marked by Pearson

M – Mandatory unit

MS – Synoptic unit

* – Students must pass this unit (see page 38 for more details)



Your choice of course sizes in detail – Optional Units

Optional Unit titles	Assessment type	GLH	Extended Certificate (360 GLH)	Foundation Diploma (510 GLH)
			Applied General	Applied General
			Choose 1 from 7	Choose 2 from 8
5. Crewing for Performance	Assignment	60	O	O
6. Stage management operations	Assignment	60		O
7. Programming and operating live sound for performance	Assignment	60	O	O
8. Programming and operating lights for performance	Assignment	60	O	O
9. Make up application for performance	Assignment	60	O	O
10. Costume making for performance	Assignment	60	O	O
11. Design Planning Process	Assignment	60	O	O
12. Scenic construction for Performance	Assignment	60	O	O

Assignment – Set and marked internally

O – Optional Unit



See next page for information on assessment

Practical assessment

Your BTEC Nationals in Production Arts students will apply their learning through practical assessments in the form of internally assessed **assignments** and externally assessed **tasks**.

Your detailed unit charts on **pages 32-33** show how each unit is assessed as well as the expected guided learning hours.

Here's a brief guide to your BTEC Nationals in Production Arts assessment:

1 Assignments – internally assessed by you

The same BTEC tried-and-tested teaching and assessment style teachers and students know and love.

For internally assessed assignments, you and your programme team draw up an assessment plan and create an assignment brief for your students to then carry out set tasks and create evidence around work-related scenarios.

Assignments can include research, projects, investigations, fieldwork and experiments and often link theory with practical exercises.

How we help you:

- We provide **authorised assignment briefs** – once you've verified these are suitable for your learners they are ready to use.
- You can download our **guide to writing assignments** if you prefer to create your own.
- We've an **assessment plan template** you can download to save you time.

Browse our step-by-step guide to delivering BTEC at:

quals.pearson.com/BTECstepbystepGuide and find out about all the support available on page 43 of this guide.

Learn more about assessment and grading

You'll find detailed unit and assessment information in your Specification at **quals.pearson.com/BTECNatsProdArts16Guide**

Download your exam timetable at **quals.pearson.com/BTECexamsGuide**



2

Tasks – set and marked by Pearson

Unit 1: Investigating Production Arts Practitioners' Work

Mandatory unit for **both qualifications**.

A written assessment task completed under supervised conditions completed within 3 hours. Learners will receive the set task booklet four weeks prior to the supervised assessment period in order to carry out investigations and critical analysis.

Frequency: Twice yearly

First assessment window:
May/June 2018

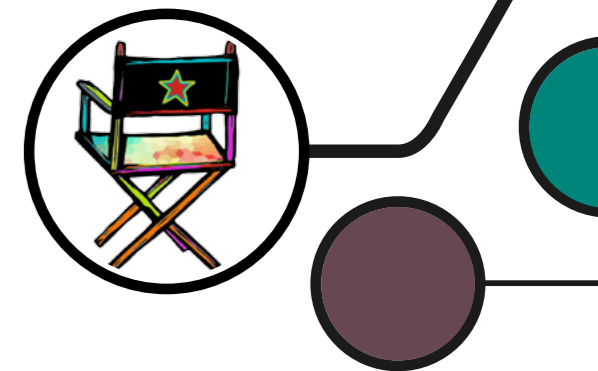
Unit 3: Production Design and Realisation

Mandatory unit for **both qualifications**.

A supervised assessment task completed under supervised conditions. Learners will be provided with the set task booklet in January in order to prepare for the development and realization of a piece of production design. The final evidence will be completed and submitted to Pearson in May.

Frequency: Once a year

First assessment window:
May 2018



Resources

Your new BTEC Nationals in Production Arts have a comprehensive range of support available to help with planning, teaching, assessing and tracking progress of your learners and also for training and professional development. **See page 43** for a summary of when and how you can use our resources.

Free resources

Along with this course guide, you have access to the following free-to-download support at quals.pearson.com/BTECNatsProdArts16Guide:

- Specifications
- Skills for Learning and Work activity sheets
- Schemes of Work
- Sample Assessment Material
- Delivery Guides
- Quality Assurance Handbooks
- Authorised Assignment Briefs
- Specimen Papers and Mark Schemes
- myBTEC

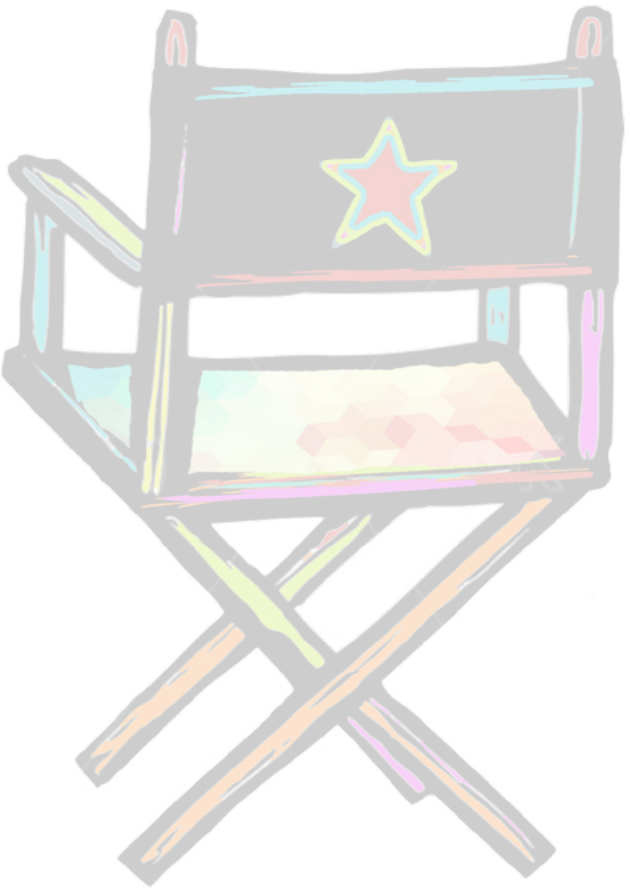


Training and professional development

You also have access to a wide range of training courses such as:

- FREE face-to-face and online events such as Getting Ready to Teach events
- Centre-based paid-for events.

Find out more at quals.pearson.com/BTECTraining16Guide.

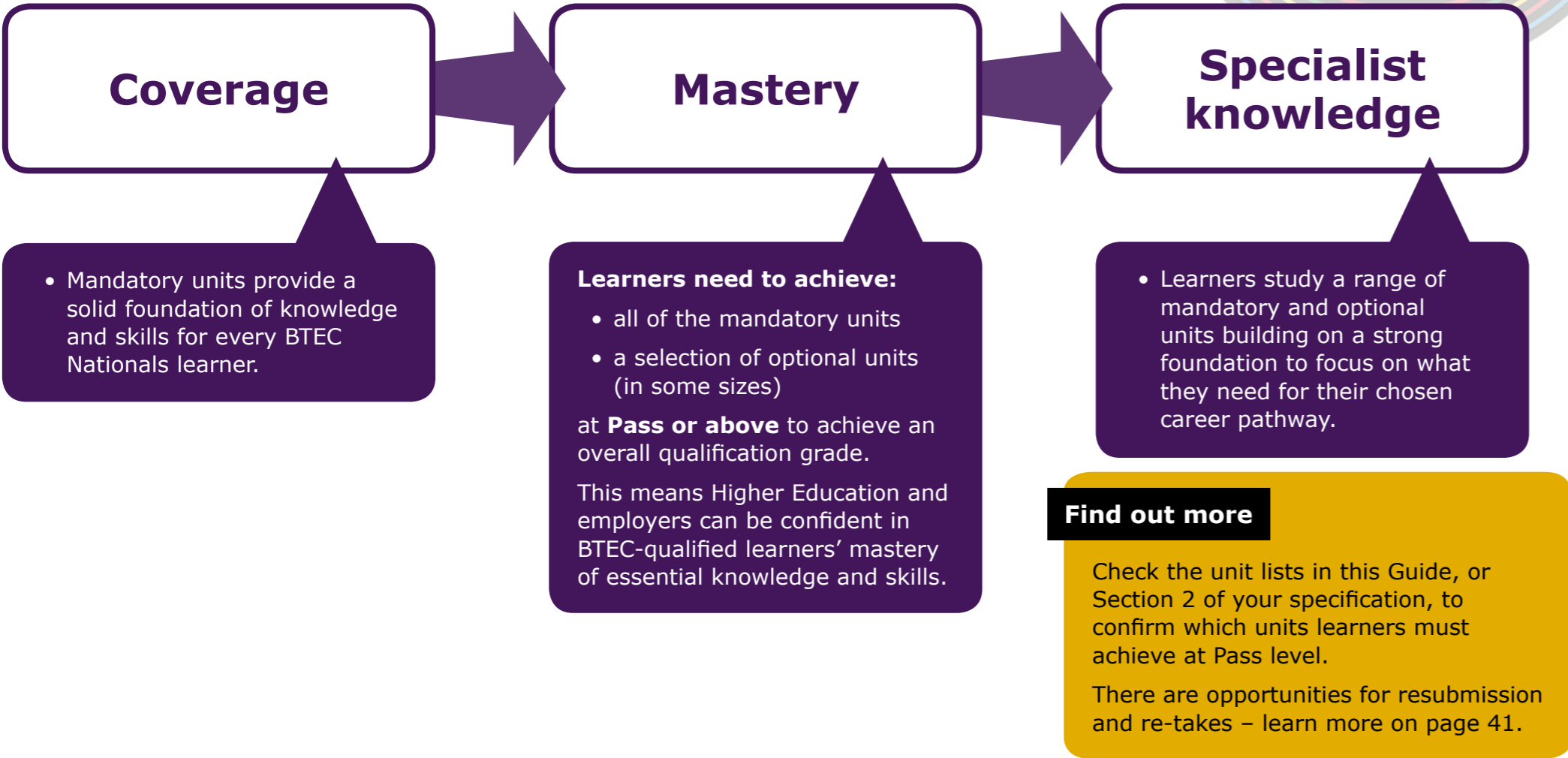


Your units explained

Your new BTEC Nationals retain the familiar flexible, unit-based content, with knowledge and skills applied in project-based assessments.

Coverage and mastery: achieving individual units and the qualification

In response to the needs of employers and Higher Education, we've designed the new courses to provide a consistent foundation of knowledge and skills. This means all BTEC-qualified candidates can start on their chosen career pathway with confidence in their:



Your units explained – Check your spec

There's plenty more information in your specification – it's worth having a look at the two sections listed below alongside the unit lists in this Guide to give you the full picture.

Check your spec:

Section 2: Structure

Includes a handy summary of:

- **Units included in each size**, so you know what content you'll be teaching
- **Guided Learning Hours**, so you know how long each unit takes to teach
- Which **units the learner has to achieve at pass or above** in order to achieve the full qualification
- **how – and when - each unit is assessed**, and whether the units are mandatory or optional.

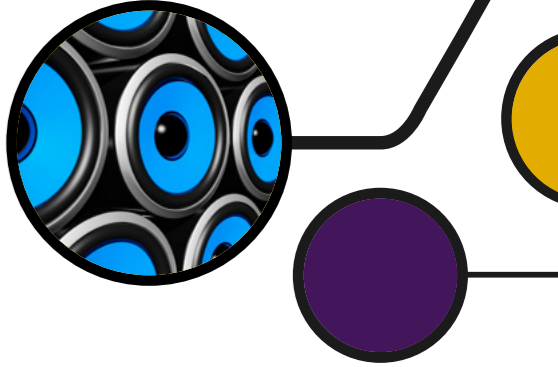
Section 3: Understanding your units

- Includes a **simple overview** of what's included in both internally and externally assessed units – essential reading before you dive into the unit content in more detail.

Find out more

Download your specification at quals.pearson.com/BTECNats16and17Guide
See page 42 of this guide for information on Quality Assurance.
See page 43 for details of support available.

See next page for information on assessment



Assessment

Your new BTEC Nationals use a combination of assessment styles. This gives your learners the opportunity to showcase their skills and apply their knowledge in an appropriate, work-related context, and provides evidence of what they can do when they apply to enter higher education or employment.

Here’s a simple summary of each type of assessment – and why not watch our **Quick Guide video** to find out more about the new externally assessed Tasks.

	Assessment	Format	Outcome
Assignments	Set and marked by: Centre (school, college or training provider) Verified by: Pearson	<ul style="list-style-type: none">Practical tasks set in work-related scenarios.Can be tailored to local industry needs.	Learners demonstrate how they apply knowledge and skills to complete a practical project over a period of time, working individually or in groups.
Tasks	Set and marked by: Pearson	<ul style="list-style-type: none">Practical, work-related scenarios taken in realistic, time-based situations.Controlled conditions – some tasks have pre-released information.	Learners demonstrate how the apply learning to common workplace or HE scenarios, providing a consistent standard of assessment for all BTEC learners.
Written Exams	Set and marked by: Pearson	<ul style="list-style-type: none">Students draw on essential information to create written answers to practical questions in exam conditions.	Learners demonstrate they can apply appropriate knowledge to a work-related challenge in timed conditions.

See the opposite page for information around grading and re-takes

Grading

A learner’s final grade reflects their achievements across all units in their BTEC National course.

Both internally and externally assessed units are individually graded as either Pass, Merit or Distinction, and each final unit grade is allocated points.

The total points scored across all units are used to calculate the final qualification grade.

	GLH	Type (Int/Ext)	Grade	Unit points
Unit 1	90	Ext	Distinction	24
Unit 2	90	Int	Distinction	24
Totals	180		D*	48

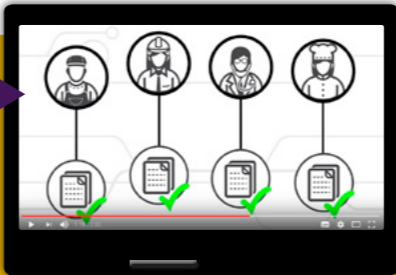
The learner has sufficient points for a D* grade

Check your spec

Section 9 of your specification covers **Understanding the qualification grade.**
quals.pearson.com/BTECNats16and17Guide

Find out more

Watch this short video guide for help and advice around BTEC grading or visit quals.pearson.com/BTECNatsGradingGuide



Re-submissions, re-takes and re-sits

Internal assessments

Re-submissions

If a learner wants to improve their grade on an internal assignment, they may be allowed one re-submission of evidence within **15 days** of receiving the grade for their original submission.

Re-takes

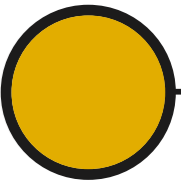
If a learner does not achieve a Pass grade from the initial submission of evidence or from a re-submission, they will be allowed one re-take of a brand new assignment which is set at Pass level only.

External assessments

Re-sits

Students can re-sit externally assessed units once.

You can download your exam timetable at quals.pearson.com/BTECexamsGuide



Quality Assurance and Administration

Quality Assurance

Quality assurance is at the heart of our BTEC qualifications and means you have the support you need to ensure the quality and standard of internal assessments in all BTEC centres.

- **New, improved Quality Assurance Handbook**
We've listened to feedback from teachers to understand what you need from your Quality Assurance guidance. As a result, we have taken a new approach to the online Quality Assurance Handbook.
- **Quality Assurance Handbook**
Your online Quality Assurance Handbook is now available as a series of web pages which contain the key information you will need when preparing and delivering BTEC.

You can now:

- **Search information** without having to download several documents.
- **View the information** with a focus on what's most important to you.

If you prefer to print off the information, you can still download the pdf documents.

You can view our Quality Assurance Handbook at quals.pearson.com/BTECQAGuide

Simpler assessment admin

We've also made admin simpler and quicker by improving our BTEC assessment support.

From September 2016 we're introducing

- **Early contact** with a single standards verifier for your subject - to help ensure you have consistent support and advice from a single subject expert earlier so you can start working together much earlier in the year.
- **Simpler paperwork** – we've reduced paperwork, combined documents and removed repetitive signatures so you can spend less time on admin.
- **Improved sampling** – we'll provide sampling for every programme so you receive early feedback on your samples and be confident in the new standard.

Watch our short video, Supporting BTEC Assessment Teams, summarising all the improvements we've made.

Or, if you prefer, go to quals.pearson.com/BTECAdminGuide for more information.

Support summary

The following shows the range of support and resources available to help delivery of BTEC Nationals. Resources available for each sector may differ so please **see web page** for up-to-date information around what's available for your subject area.

Plan

Get to know your course

- Specifications
- Sample Assessment Materials
- Delivery guides
- Course guides.

Plan your course

- myBTEC course builder and planning tool
- Delivery guides
- Authorised Assignment Briefs
- Getting Ready to Teach events.

Recruit and prepare learners

- Free skills for learning and work activity sheets.

Teach

Gather your FREE teaching resources

- Delivery guides
- Schemes of Work
- Skills for learning and work activity sheets.

Attend FREE training events

- Face-to-face training events
- Online training events.

Paid-for resources

See pages 15 and 23 of this guide for details of published materials or visit www.pearsonfe.co.uk/BTECNats16and17Guide

Assess & Track

Examine the guidance

- Quality Assurance guides
- Standards Verifier and Quality Review visits
- Assessment and assignment writing, and Standardisation training.

Collect examples of the standard

- Authorised Assignment Briefs
- Specimen papers, tasks and sample marked learner work.

Gather assessment templates and tools

- myBTEC assignment briefs and progress tracking.

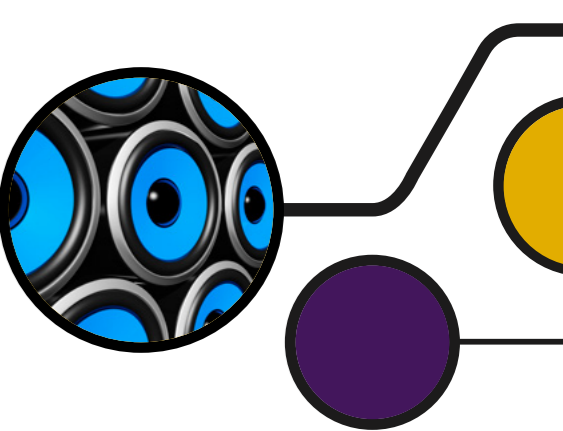
Develop

Develop your expertise

- Launch events
- Getting Ready to Teach Events.

Find out more

quals.pearson.com/BTECNats16and17Guide



Your next Steps

1. Download your specifications and sample assessment materials at **quals.pearson.com/BTECNats16and17guide**
2. Browse our FREE resources
3. Order your paid-for resources at:
www.pearsonfe.co.uk/BTECNats16and17guide

Talk to us

For help and advice about your new qualifications and free resources contact our Subject Advisor for Music and Performing Arts:

Jeffery Hole – Music and Music Technology

Paul Webster – Drama, Theatre Studies and Performing Arts

UK: 020 7010 2176 (Music and Music Tech)

020 7010 2189 (Performing Arts)

Intl: +44 (0)20 7010 2176 (Music and Music Tech)

+44 (0)20 7010 2189 (Performing Arts)

@ TeachingMusic@pearson.com

@ TeachingPerformingArts@pearson.com

@PearsonMusic1

@PearsonPerfArts



Stay in touch

Sign up for updates at **quals.pearson.com/BTECNats16Update** and we'll keep you up-to-date with the latest news.

 Follow us on twitter

@teachBTEC

#ichooseBTEC