



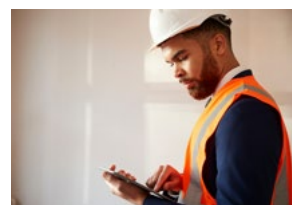
Pearson
BTEC



Where can a BTEC
qualification in
Construction and the Built
Environment take me?

**Careers in Construction and
the Built Environment**

Where can a BTEC qualification in Construction and the Built Environment take me?



If you'd like to find out more about where BTEC Construction can take you, visit our website.

go.pearson.com/bteconstruction

Architect

Architects design new buildings and the spaces around them, and work on the restoration and conservation of existing buildings. You could work in a creative studio, in an office or visit sites.

An architect's salary can range from £27,500 - £90,000¹.

Skills you'll need:

- Design skills
- Attention to detail
- Analytical thinking
- Creativity
- Numeracy skills
- Knowledge of construction
- Organisation
- Initiative
- Communication
- Computer skills



"I'm a big ambassador for BTEC and believe it is an excellent, valued way of starting a career path in construction."

George Clarke, TV presenter, architect, and founder of MOBIE studied a BTEC Level 3 in Building and Construction at Wearside College

¹ <https://nationalcareers.service.gov.uk/job-profiles/architect>

If you'd like to find out more about where BTEC Construction can take you, visit our website.

go.pearson.com/bteconstruction

Construction Manager

Construction managers organise the work on building projects, making sure it's completed safely, within budget and on time. You could work on a construction site or at a client's business.

A construction manager's salary can range from £27,000 to £65,000².

Skills you'll need:

- Leadership skills
- Teamworking skills
- Communication skills
- Management skills
- Initiative
- Numeracy skills
- Knowledge of construction
- Organisation skills
- Computer skills



² <https://nationalcareers.service.gov.uk/job-profiles/construction-manager>

If you'd like to find out more about where BTEC Construction can take you, visit our website.

go.pearson.com/bteconstruction

Environmental Consultant

Environmental consultants advise on sustainability, including waste management, recycling, flood risk and the effects of climate change. You could work outdoors or in an office.

An environmental consultant's salary can range from £23,000 to £43,000³.

Skills you'll need:

- Numeracy skills
- Analytical thinking skills
- Geography knowledge
- Knowledge of construction
- Reasoning skills
- Communication skills
- Attention to detail
- Decision making skills
- Computer skills



³ <https://nationalcareers.service.gov.uk/job-profiles/environmental-consultant>

If you'd like to find out more about where BTEC Construction can take you, visit our website.

go.pearson.com/bteconstruction

Heritage Officer

Heritage officers support teams to take care of buildings, monuments and places valued for their cultural and historical importance. You could work in an office or visit sites.

A heritage officer's salary can range from £18,500 to £48,000⁴.

Skills you'll need:

- Attention to detail
- Customer service skills
- Knowledge of construction
- Teamworking skills
- Communication skills
- Administration skills
- Decision making
- Computer skills



⁴ <https://nationalcareers.service.gov.uk/job-profiles/heritage-officer>

If you'd like to find out more about where BTEC Construction can take you, visit our website.

go.pearson.com/bteconstruction

Landscape Architect

Landscape architects plan, design, create and manage the landscapes we live and work in. You could work in an office or visit sites outdoors.

A landscape architect's salary can range from £20,000 to £45,000⁵.

Skills you'll need:

- Design skills
- Attention to detail
- Knowledge of construction
- Customer service skills
- Communication skills
- Numeracy skills
- Initiative
- Innovation
- Computer skills



PEUK B0961 © 123rf/Dmitrii Shironosov

⁵ <https://nationalcareers.service.gov.uk/job-profiles/landscape-architect>

If you'd like to find out more about where BTEC Construction can take you, visit our website.

go.pearson.com/bteconstruction

Quantity Surveyor

Quantity surveyors oversee construction projects, managing risks and controlling costs. You could work in an office or outdoors.

A quantity surveyor's salary can range from £25,000 to £80,000⁶.

Skills you'll need:

- Attention to detail
- Numeracy skills
- Knowledge of construction
- Analytical thinking skills
- Initiative
- Reasoning skills
- Knowledge of engineering science and technology
- Computer skills
- Persistence and determination



⁶ <https://nationalcareers.service.gov.uk/job-profiles/quantity-surveyor>

If you'd like to find out more about where BTEC Construction can take you, visit our website.

go.pearson.com/bteconstruction

Building Services Engineer

Building services engineers design, fit and maintain the heating, lighting and power systems in offices, hospitals, and shopping centres. You could work on a construction site or in an office.

A building service engineer's salary can range from £24,000 to £50,000⁷.

Skills you'll need:

- Analytical thinking skills
- Numeracy skills
- Attention to detail
- Communication skills
- Knowledge of construction
- Initiative
- Computer skills



⁷ <https://nationalcareers.service.gov.uk/job-profiles/building-services-engineer>

If you'd like to find out more about where BTEC Construction can take you, visit our website.

go.pearson.com/bteconstruction

Digital Engineering Technician

Digital engineering technicians use IT to achieve the optimum performance of Built Environment projects, with digital modelling and visualisation of designs, measurement, use of data and communication with others. They project technical support to engineers working as part of a construction project team.

A digital engineering technician's salary can range from £20,000 to £40,000⁸.

Skills you'll need:

- Computer skills
- Analytical thinking
- Willingness to innovate and embrace new technologies
- Communication skills
- Organisation skills
- Leadership skills



⁸ <https://nationalcareers.service.gov.uk/job-profiles/electrical-engineering-technician>

If you'd like to find out more about where BTEC Construction can take you, visit our website.

go.pearson.com/bteconstruction

Civil Engineer

Civil engineers design and manage construction projects, from bridges and buildings to transport links and sports stadiums. You could work on a construction site or in an office.

A civil engineer's salary can range from £30,000 to £70,000⁹.

Skills you'll need:

- Design skills
- Analytical thinking skills
- Knowledge of construction
- Reasoning skills
- Problem-solving skills
- Attention to detail
- Numeracy skills
- Knowledge of engineering science and technology



PEUK B0961 © Yutana Contributor Studio

⁹ <https://nationalcareers.service.gov.uk/job-profiles/civil-engineer>

If you'd like to find out more about where BTEC Construction can take you, visit our website.

go.pearson.com/bteconstruction

Surveying Technician

Surveying technicians support chartered surveyors by collecting information from building or land-site inspections, taking appropriate measurements, recording data and communicating to clients and colleagues. Technicians may work in a range of different specialisms such as property surveying (residential or commercial), land surveying, valuations, or as part of bigger projects in construction management.

A surveying technician's salary can range from £25,000 to £70,000¹⁰.

Skills you'll need:

- Time management skills
- Communication skills
- Negotiation skills
- Attention to detail
- Numeracy skills
- Technology skills

¹⁰ <https://nationalcareers.service.gov.uk/job-profiles/building-surveyor>



If you'd like to find out more about where BTEC Construction can take you, visit our website.

go.pearson.com/bteconstruction

Boat Builder

Boat builders build, repair and refit marine craft from small sailing boats to large sea-going vessels. You could work in a workshop, at a marina or at a shipyard.

A boat builder's salary can range from £16,000 to £35,000¹¹.

Skills you'll need:

- Design skills
- Numeracy skills
- Knowledge of physics, engineering science and technology
- Analytical thinking skills
- Communication skills
- Computer skills



¹¹ <https://nationalcareers.service.gov.uk/job-profiles/boat-builder>

If you'd like to find out more about where BTEC Construction can take you, visit our website.

[go.pearson.com/bteconstruction](https://www.go.pearson.com/bteconstruction)

Town Planner

Town planners help shape the way towns and cities develop and balance the demands on land with the needs of the community. You could work in an office and travel often.

A town planner's salary can range from £18,000 to £45,000¹².

Skills you'll need:

- Teamworking skills
- Analytical thinking skills
- Communication skills
- Knowledge of geography
- Persistence and determination
- Business management skills
- Computer skills



¹² <https://nationalcareers.service.gov.uk/job-profiles/town-planner>

If you'd like to find out more about where BTEC Construction can take you, visit our website.

go.pearson.com/bteconstruction

Bricklayer

Bricklayers build houses, repair walls and chimneys, and refurbish decorative stonework. They also work on restoration projects. You could work on a construction site and travel often.

A bricklayer's salary can range from £17,000 to £42,000¹³.

Skills you'll need:

- Knowledge of construction
- Attention to detail
- Teamworking skills
- Flexibility and adaptability
- Level-headed
- Physical strength, balance, and coordination
- Organisation skills
- Computer skills



¹³ <https://nationalcareers.service.gov.uk/job-profiles/bricklayer>

If you'd like to find out more about where BTEC Construction can take you, visit our website.

go.pearson.com/bteconstruction

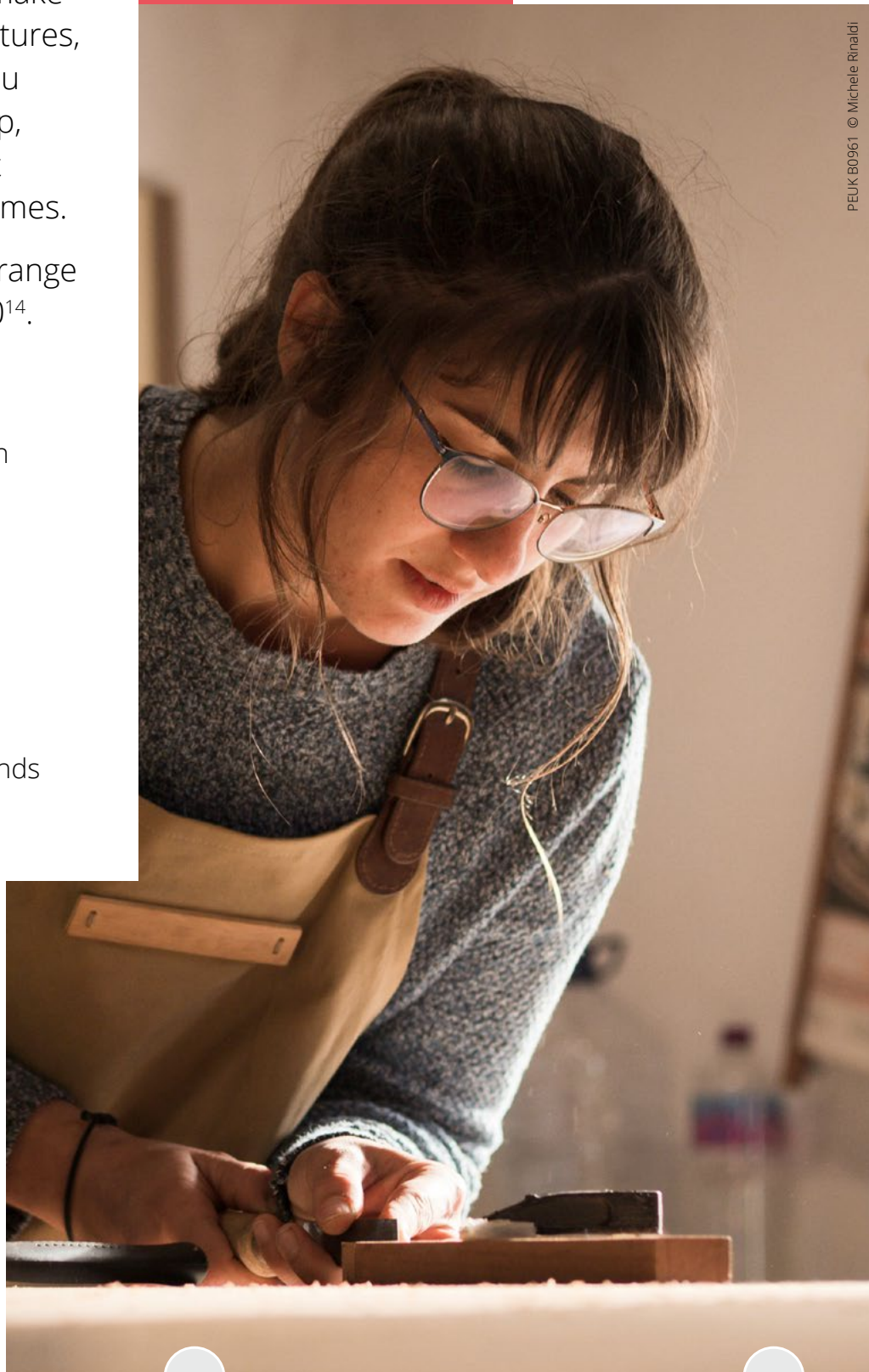
Carpenter

Carpenters and joiners make and install wooden structures, fittings, and furniture. You could work in a workshop, on a construction site, at businesses or private homes.

A carpenter's salary can range from £17,000 to £38,000¹⁴.

Skills you'll need:

- Knowledge of construction
- Attention to detail
- Numeracy skills
- Teamworking skills
- Independence
- Communication skills
- Computer skills
- Working well with your hands
- Machinery skills



¹⁴ <https://nationalcareers.service.gov.uk/job-profiles/carpenter>

If you'd like to find out more about where BTEC Construction can take you, visit our website.

go.pearson.com/bteconstruction

Nuclear Technician

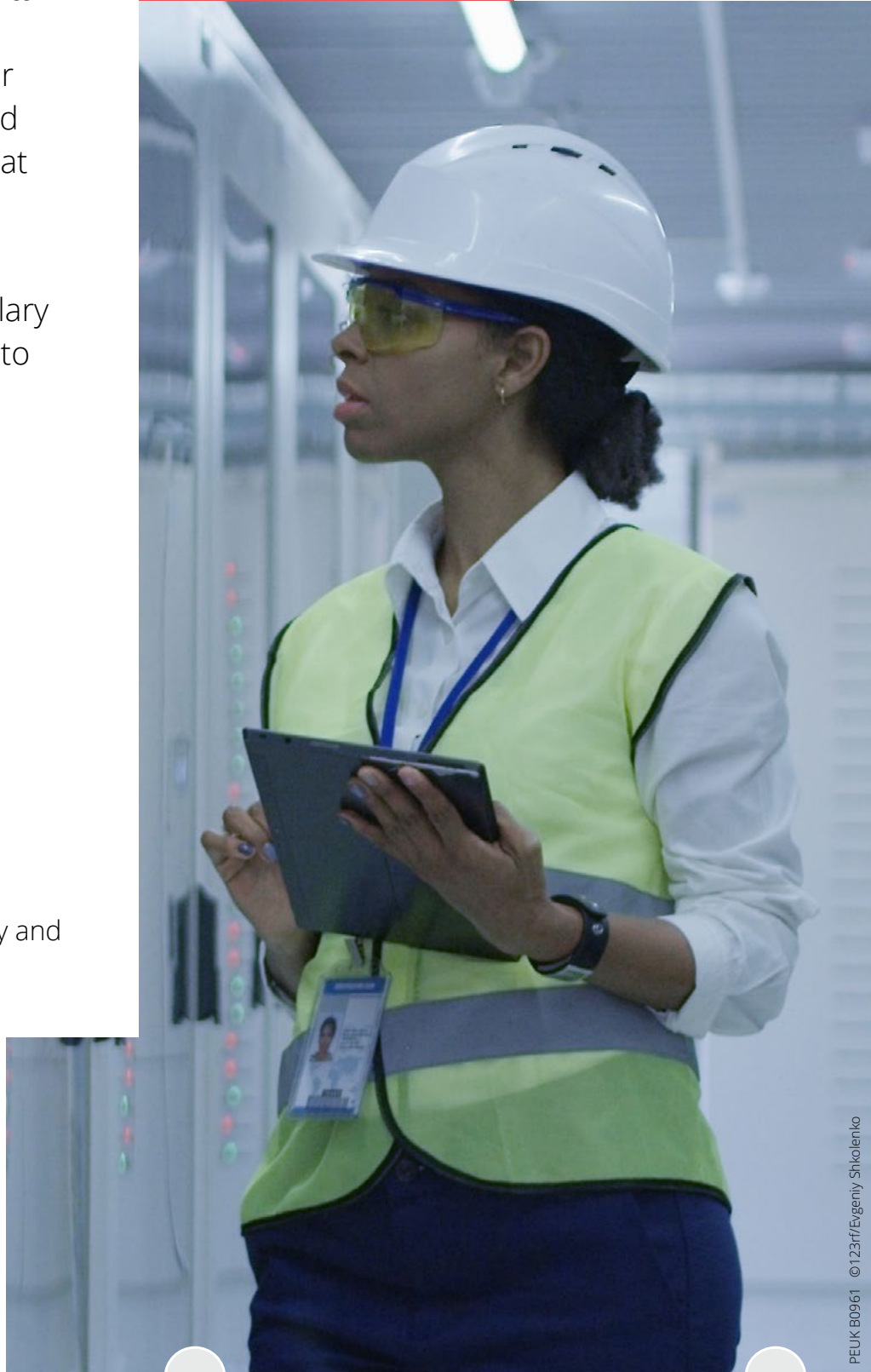
Nuclear technicians maintain equipment and monitor radiation levels in nuclear power stations. You could work at a power station, at a research facility or in a laboratory.

A nuclear technician's salary can range from £23,000 to £38,000¹⁵.

Skills you'll need:

- Attention to detail
- Flexibility and adaptability
- Reasoning skills
- Computer skills
- Knowledge of physics, engineering science and technology
- Machinery skills
- Observation skills
- Knowledge of public safety and security

¹⁵ <https://nationalcareers.service.gov.uk/job-profiles/nuclear-technician>



If you'd like to find out more about where BTEC Construction can take you, visit our website.

go.pearson.com/bteconstruction

Building Site Inspector

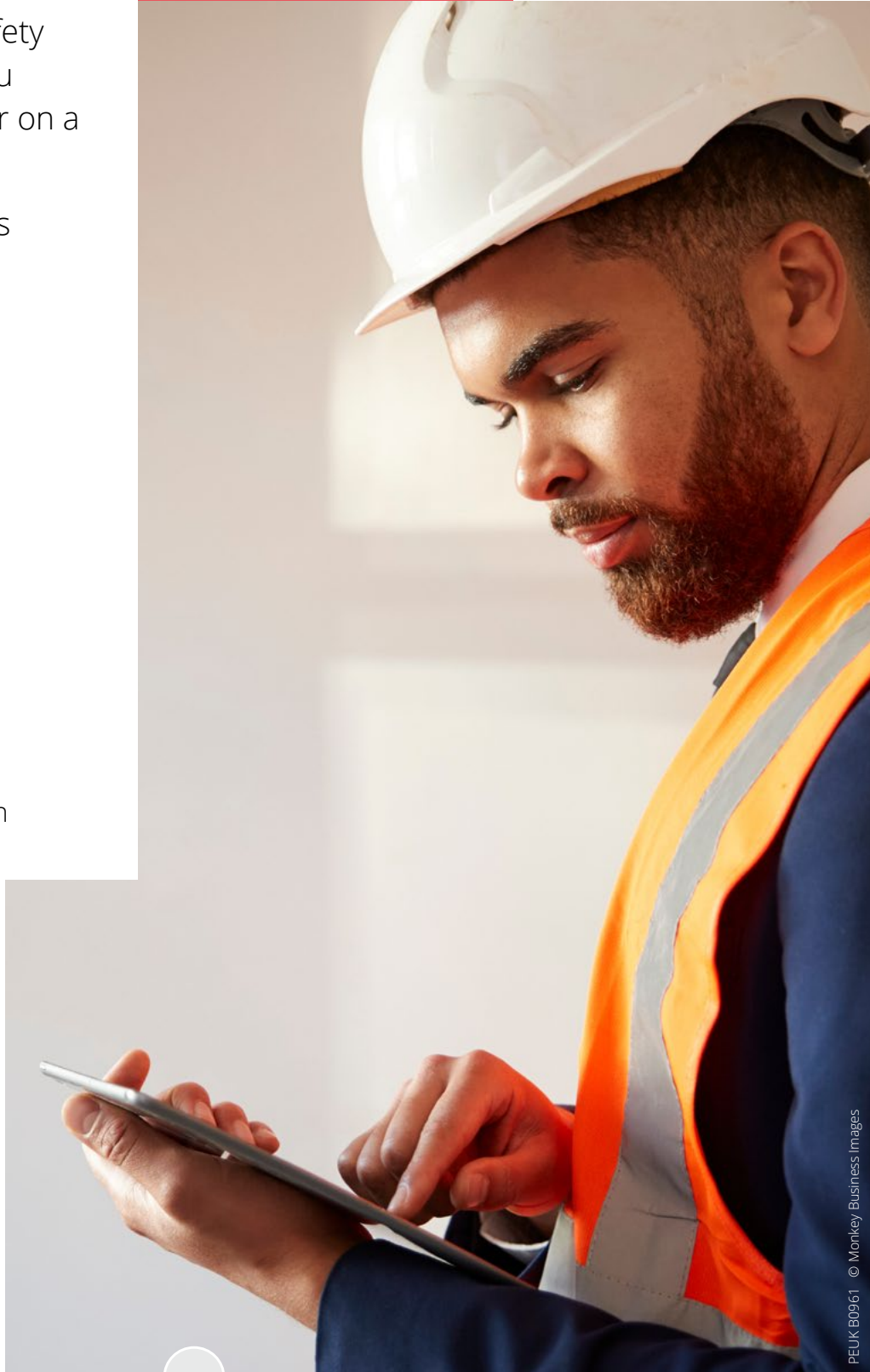
Building site inspectors check the quality and safety of construction work. You could work in an office or on a construction site.

A building site inspector's salary can range from £21,000 to £60,000¹⁶.

Skills you'll need:

- Initiative
- Numeracy skills
- Analytical thinking skills
- Attention to detail
- Customer service skills
- Patience
- Levelheadedness
- Computer skills
- Knowledge of construction

¹⁶ <https://nationalcareers.service.gov.uk/job-profiles/building-site-inspector>



If you'd like to find out more about where BTEC Construction can take you, visit our website.

go.pearson.com/bteconstruction