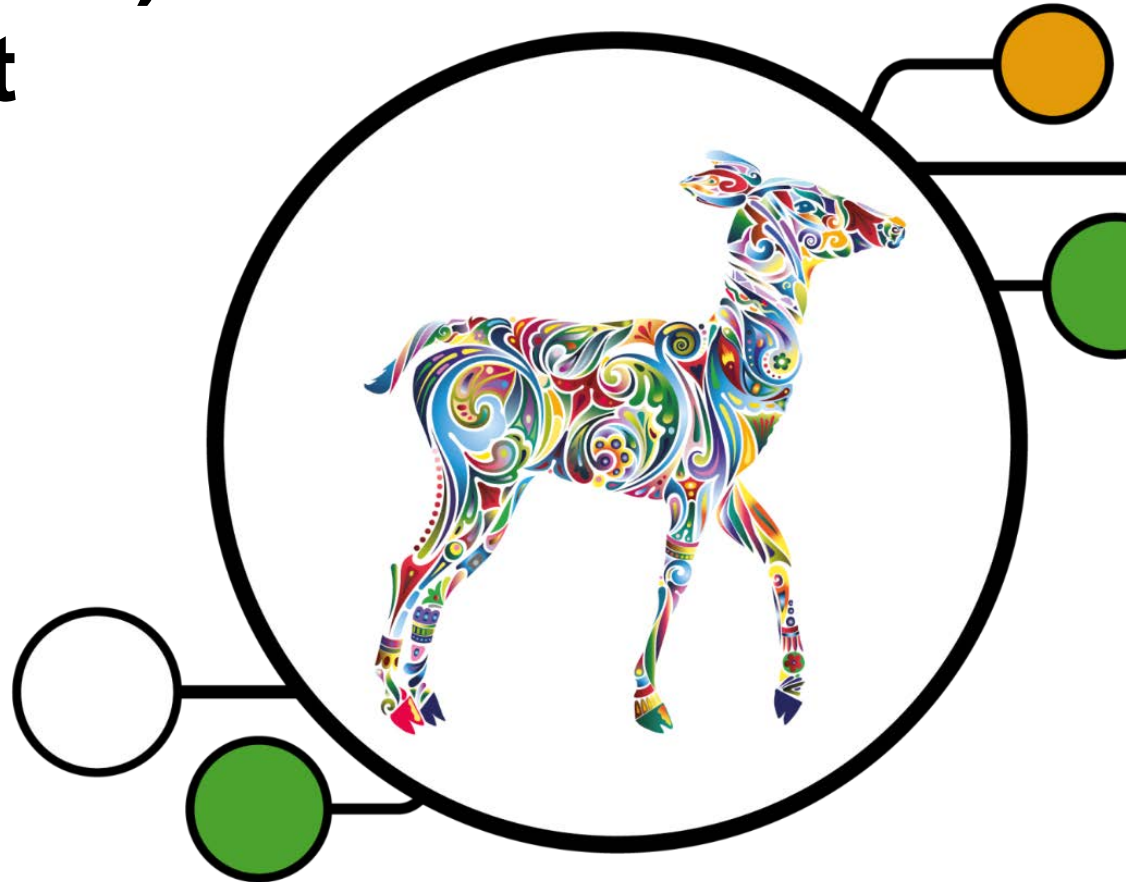
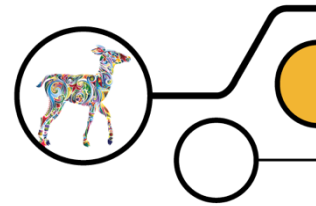


Getting Ready to Teach the New Pearson BTEC Level 3 Nationals (2016) in Animal Management

**Event Code:
180VG01**

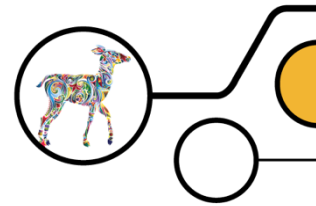


Aims for the Day



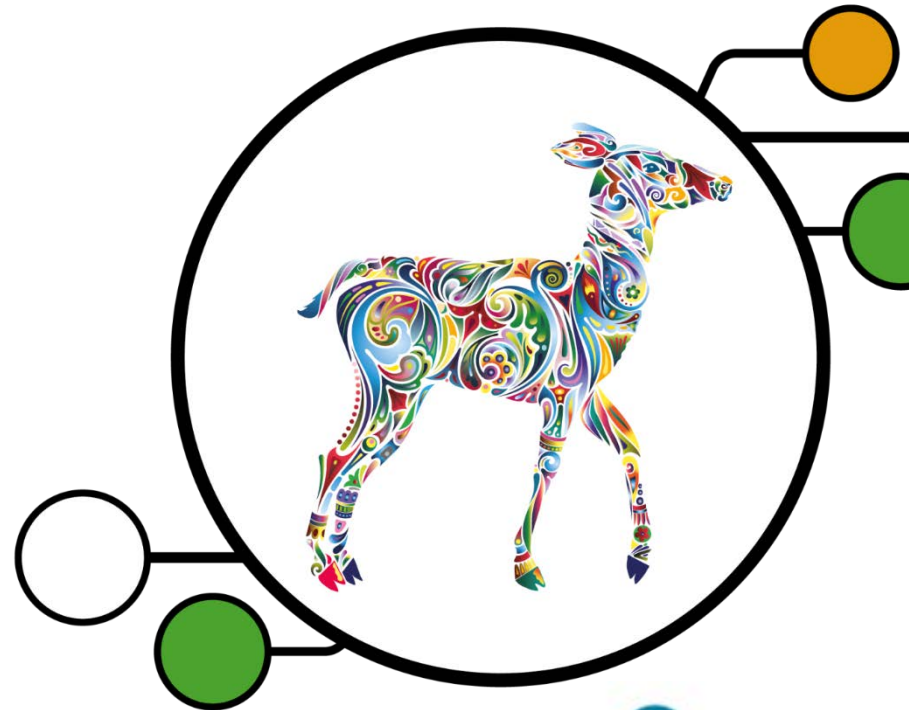
- Gain an Overview of Animal Management
- Understand the key features of the new qualification
- Review internal and external assessment requirements
- Review the quality assurance model
- Review support and latest news
- Have the opportunity to ask questions and network

Before we start ...

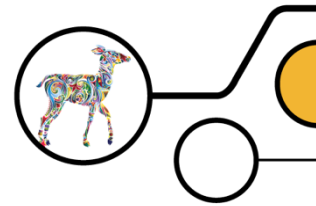


Getting to know you....

Let's see who we have on the call today



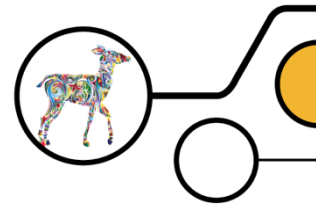
Structure of Qualification Suite



	GLHs	Units	Mandatory	External	Work Exp
Extend Certificate	360	5	5	1	75
Foundation Diploma	540	7	6	2	150
Diploma	720	10	7	2	225
Extended Diploma	1080	15	8	3	300

Please note: Science units will no longer be mandatory

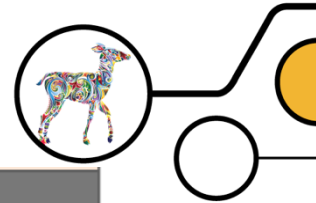
Extended Diploma Structure - Mandatory



Pearson BTEC Level 3 National Extended Diploma in Animal Management				
Unit number	Unit title	GLH	Type	How assessed
Mandatory units group A – learners complete and achieve all units				
1	Animal Breeding and Genetics	120	Mandatory	External
2	Animal Biology	120	Mandatory	External
3	Animal Welfare and Ethics	120	Mandatory Synoptic	External
4	Practical Animal Husbandry	60	Mandatory	Internal
5	Animal Behaviour	60	Mandatory	Internal
Mandatory units group B – learners complete all units				
6	Animal Health and Diseases	60	Mandatory	Internal
7	Work Experience in the Animal Sector	60	Mandatory	Internal
8	Investigative Research Project	60	Mandatory	Internal

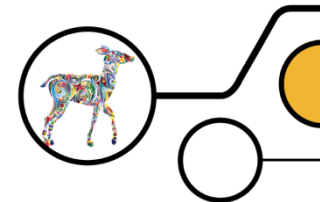
[Qualification New – Narrow Miss](#)

Extended Diploma Structure - Optional



Optional units – learners complete 7 units				
9	Practical Skills in Animal Science	60	Optional	Internal
10	Animal Metabolism	60	Optional	Internal
11	Advanced Animal Nutrition	60	Optional	Internal
12	Business Management in the Animal Sector	60	Optional	Internal
13	Animal Management in a Retail Environment	60	Optional	Internal
14	Animals in Boarding Establishments	60	Optional	Internal
15	Developing an Enterprise in the Animal Sector	60	Optional	Internal
16	Animal Grooming	60	Optional	Internal
17	Principles of Animal Nursing	60	Optional	Internal
18	Aquatic Animal Health and Husbandry	60	Optional	Internal
19	Farm Livestock Husbandry	60	Optional	Internal
20	Human and Animal Interaction	60	Optional	Internal
21	Exotic Animal Husbandry	60	Optional	Internal
22	Practical Estate Planning, Construction and Maintenance	60	Optional	Internal
23	Zoological Animal Health and Husbandry	60	Optional	Internal
24	Wildlife Ecology and Conservation Management	60	Optional	Internal

Qualification Grading

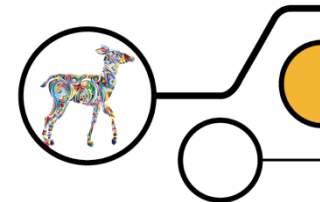


	60GLH	120GLH
U	0	0
Pass	6	12
Merit	10	20
Distinctions	16	32

N Grade
Externals Only
8

Extended Certificate		Foundation Diploma		Diploma		Extended Diploma	
360 GLH		540 GLH		720 GLH		1080 GLH	
Grade	Points threshold	Grade	Points threshold	Grade	Points threshold	Grade	Points threshold
U	0	U	0	U	0	U	0
Pass	36	P	54	PP	72	PPP	108
				MP	88	MPP	124
Merit	52	M	78			MMP	140
				MM	104	MMM	156
				DM	124	DMM	176
Distinction	74	D	108			DDM	196
				DD	144	DDD	216
				D*D	162	D*DD	234
						D*D*D	252
Distinction*	90	D*	138	D*D*	180	D*D*D*	270

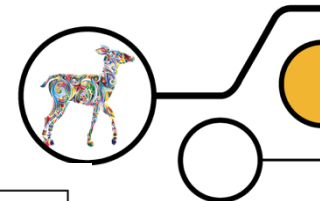
What grade did this learner achieve?



Unit	GLH	Type (Int / Ext)	Grade	Unit Points
1	120	External	Pass	
2	120	External	Merit	
3	120	External	Narrow Miss	
4	60	Internal	Pass	
5	60	Internal	Pass	
6	60	Internal	Merit	
7	60	Internal	Pass	
8	60	Internal	Merit	
9	60	Internal	Distinction	
10	60	Internal	Merit	
11	60	Internal	Distinction	
14	60	Internal	Merit	
16	60	Internal	U	
21	60	Internal	U	
23	60	Internal	Merit	
			Total:	

Candidate Achieves:

Answer:



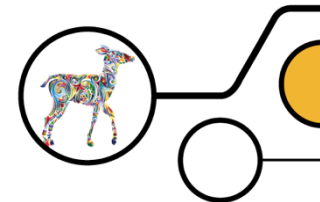
Unit	GLH	Type (Int / Ext)	Grade	Unit Points
1	120	External	Pass	12
2	120	External	Merit	20
3	120	External	Narrow Miss	8
4	60	Internal	Pass	6
5	60	Internal	Pass	6
6	60	Internal	Merit	10
7	60	Internal	Pass	6
8	60	Internal	Merit	10
9	60	Internal	Distinction	16
10	60	Internal	Merit	10
11	60	Internal	Distinction	16
14	60	Internal	Merit	10
16	60	Internal	U	0
21	60	Internal	U	0
23	60	Internal	Merit	10
			Total:	140

Candidate Achieves: **MMP**

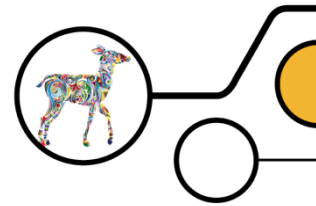
Yellow – Mandatory (Externals must get N or higher / Internals P or higher)

Blue – Must complete do not need to achieve

Types of Assessment



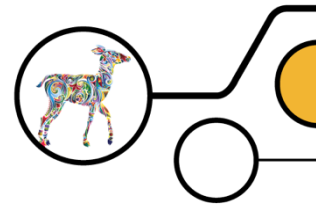
	Set and marked by	Format	Students demonstrate
Assignments	<p>You. Verified by Pearson</p> <p>Resubmission time limit is now 15 working days (increased from 10 working days).</p>	<ul style="list-style-type: none"> • Practical tasks • Work-related scenarios • Tailored to local needs 	<p>Application of knowledge and skills</p> <p>Individually or in teams</p>
Tasks	Pearson	<ul style="list-style-type: none"> • Practical tasks • Everyday scenarios • Controlled conditions • Some pre-released information 	<p>Application of learning to common workplace or HE scenarios</p>
Written exam	Pearson	<ul style="list-style-type: none"> • Practical questions • Written responses • Controlled conditions 	<p>Confidence with recalling and applying technical information and fundamental knowledge</p>



Essential Information

- Student name and **declaration**
- Assessor name
- Qualification and units covered and assignment title
- **Duration of assessment – including submission date**
- Learning aims addressed
- Vocational scenario
- Task and type of evidence required
- Assessment criteria
- Potential sources of information

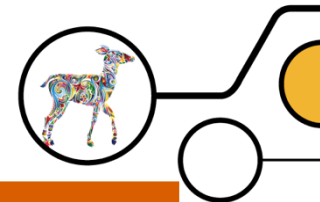
Marking and feedback guidance



- ✓ Provide general feedback and support
- ✓ Oral feedback
- ✓ Specific comments on the evidence provided
- ✓ Conformation of achievement
- ✓ Document criteria achieved and how
- ✓ Document criteria not achieved and why
- ✓ Comment on general structure and functional skills
- ✓ State if resubmission is approved & submission date (15 days)

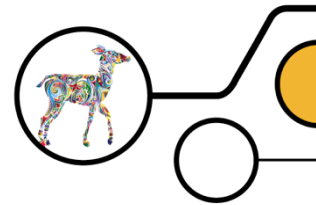
- ✗ Instructions on how to achieve a higher grade

Externals

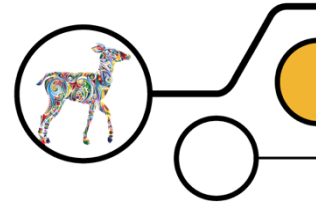


Qualification Size	Unit 1 Equine Structure, Form and Function	Unit 2 Equine Diet and Nutrition	Unit 3 Managing Equine Disease
Extended Certificate 360 GLH			Mandatory
Foundation Diploma 540 GLH		Mandatory	Mandatory
Diploma 720 GLH		Mandatory	Mandatory
Extended Diploma 1080 GLH	Mandatory	Mandatory	Mandatory

External Assessments

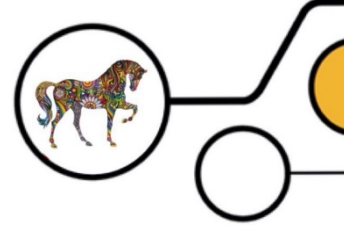


Unit	Type	Availability
Unit 1: Animal Breeding and Genetics	<ul style="list-style-type: none"> • A task set and marked by Pearson, completed under supervised conditions. • Prior to the supervised assessment, learners will be provided with information to research in approximately 3 hours in a two week period timetabled by Pearson. • The supervised assessment is 2 hours in a one week period timetabled by Pearson. • Written submission of evidence. • 80 marks. 	<p>Dec/Jan and May/June</p> <p>First assessment May/June 2019</p>
Unit 2: Animal Biology	<ul style="list-style-type: none"> • A written examination set and marked by Pearson. • 1 hour and 30 minutes. • Written submission. • 80 marks. 	<p>Jan and May/June</p> <p>First assessment May/June 2019</p>
Unit 3: Animal Welfare and Ethics	<ul style="list-style-type: none"> • A task set and marked by Pearson and completed under supervised conditions. • Prior to the supervised assessment, learners will be provided with a scenario to research in approximately 3 hours in a two week period timetabled by Pearson. • The supervised assessment period is 3 hours during an assessment period of two days timetabled by Pearson. • Written submission. • 60 marks. 	<p>Dec/Jan and May/June</p> <p>First assessment May/June 2019</p>



Planning for External Assessment

Command Verbs



Compare

Justify

Explain

Discuss

Identify

Describe

Plot

Give

Complete

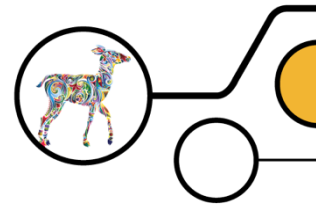
State

Appraisal

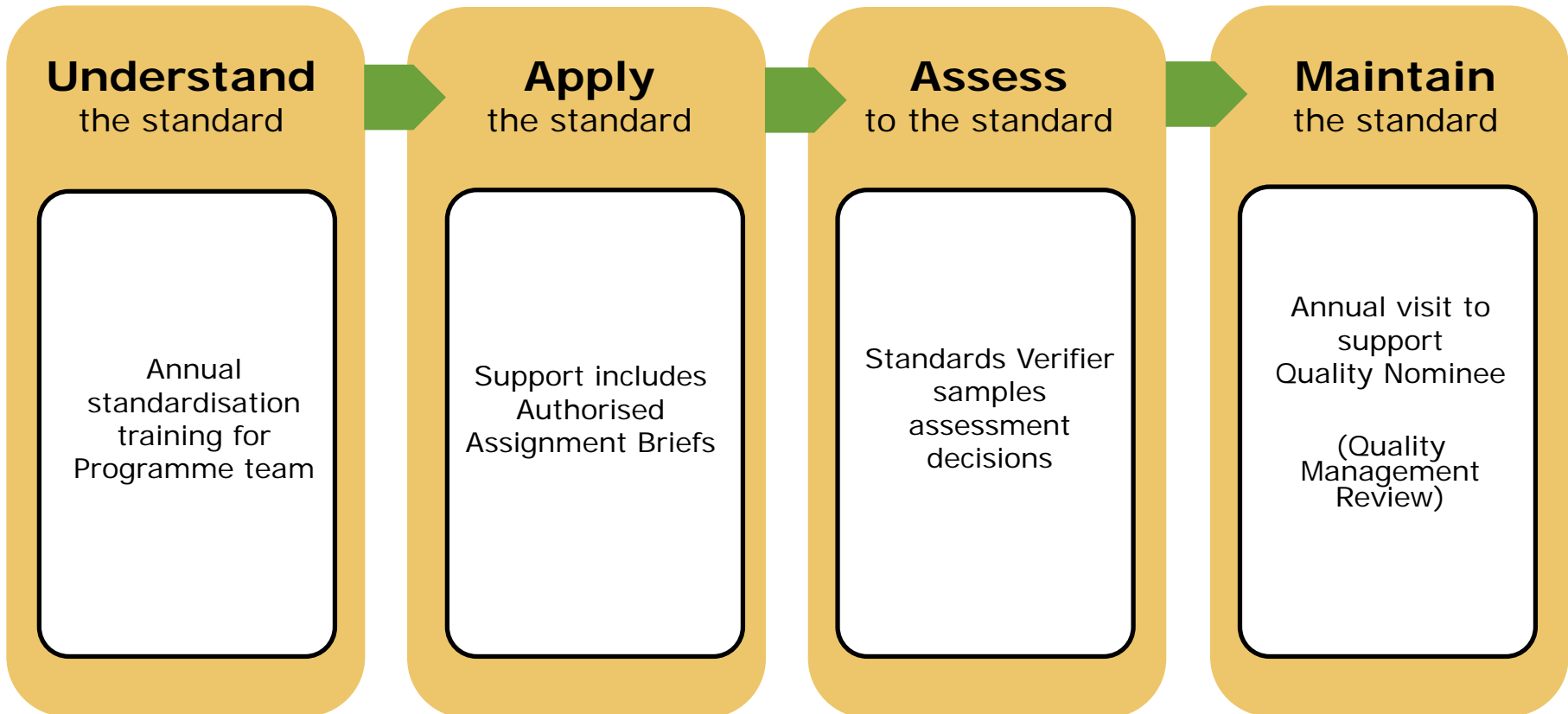
Define

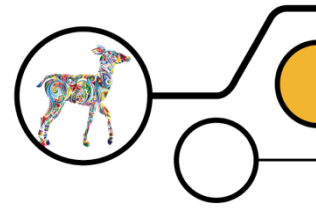
Label

Students apply learning in practical assessments



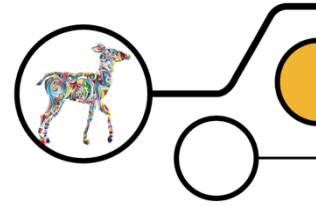
Quality Assurance - confidence in the standard





TOP TIPS

Key websites



BTEC Level 3 NQF in Animal Management (2016) qualification page

<https://qualifications.pearson.com/en/qualifications/btec-nationals/animal-management-2016.html#tab-3>

BTEC key documents

<http://qualifications.pearson.com/en/about-us/qualification-brands/btec/delivering-btec/key-documents.html>

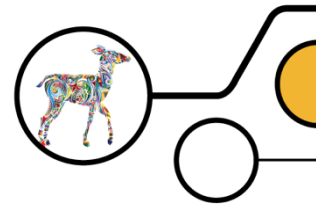
Edexcel Online

<https://www.edexcelonline.com/Account/Login.aspx>

MyBTEC

<https://mybtec.pearson.com/MyBTEC/Home/Home#/>

Aims for the Day



- Gain an Overview of Animal Management
- Understand the key features of the new qualification
- Review internal and external assessment requirements
- Review the quality assurance model
- Review support and latest news
- Have the opportunity to ask questions and network

Thank you for attending today...

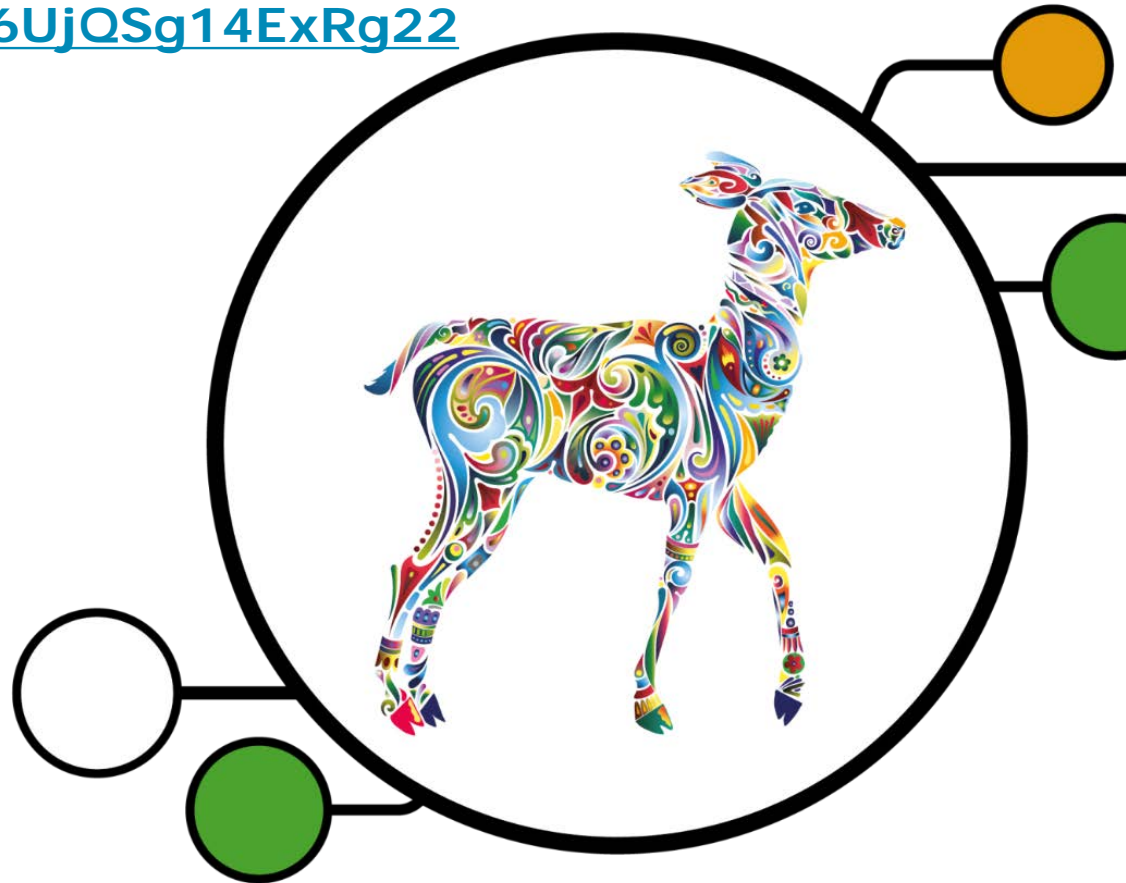
We hope you have found this event useful.

You will be emailed a link to the evaluation form after the event today. In order to continue to improve our offer, please take the opportunity to complete it.

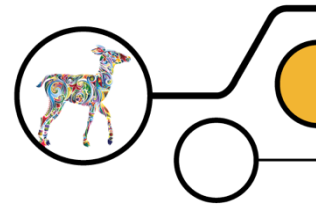
You can also access it here:

<https://goo.gl/forms/WzI6UjQSg14ExRg22>

THANK YOU!



Support



First point of contact:



UK: 020 7010 2173

Intl: +44 (0) 20 7010 2173



TeachingLandBasedStudies@pearson.com

@teachBTEC